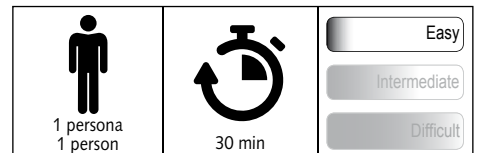
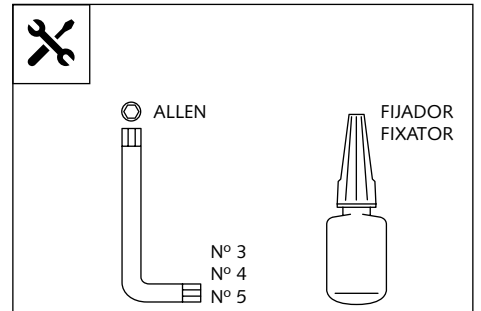


REAR MUDGUARD ADAPTABLE TO DUCATI SCRAMBLER



Ref.: 9165 J
(black colour)

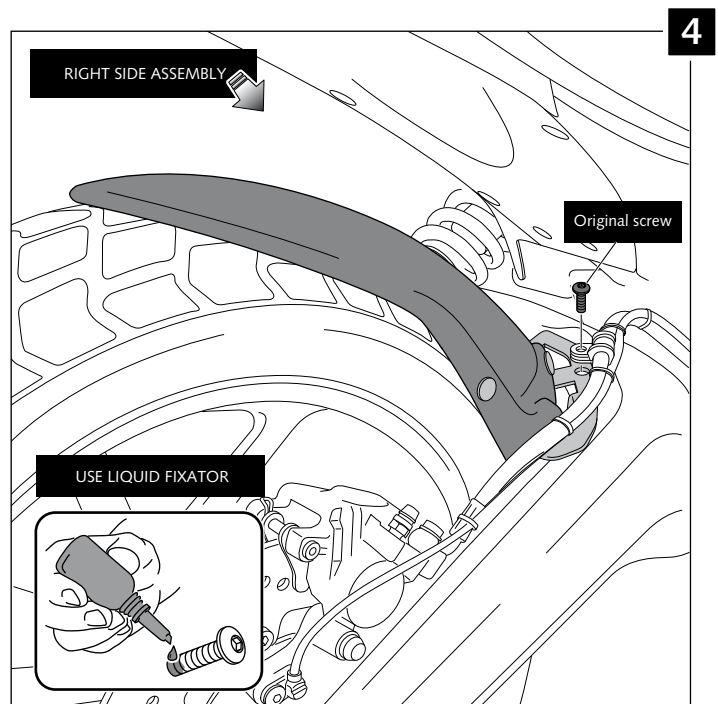
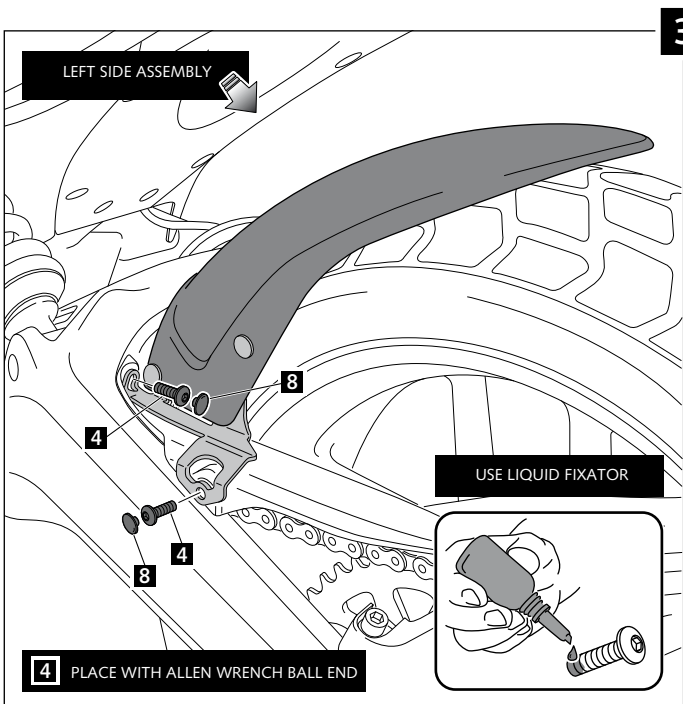
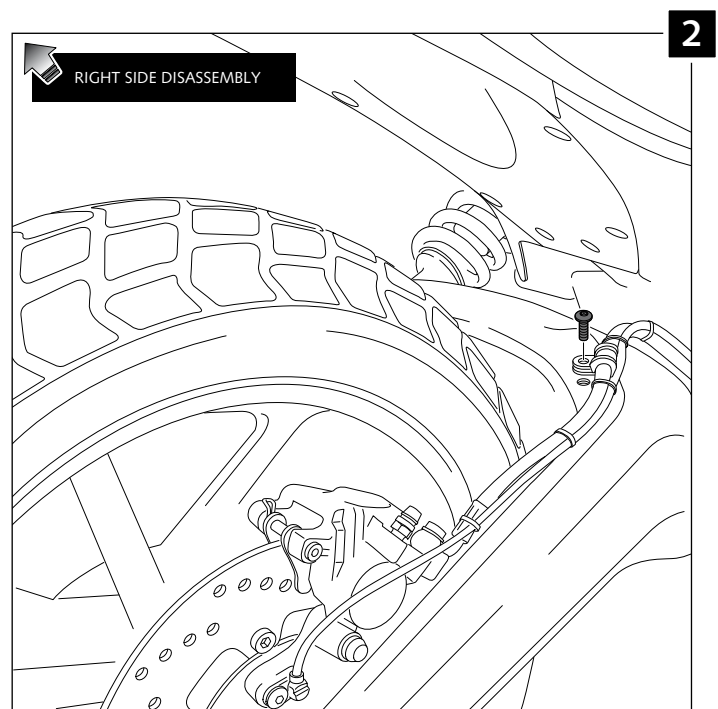
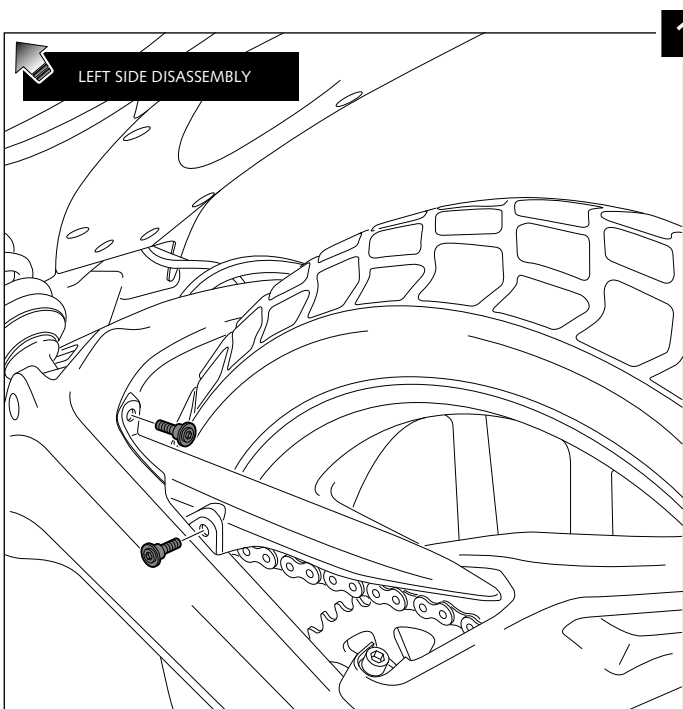
Ref.: 9165 C
(carbon look)



ID.	PART	DESCRIPTION	QTY.
1		Rear mudguard	1
2		Right metal support (R)	1
3		Left metal support (L)	1
4		M5x16 Ø11 ISO 7380 Allen screw	2
5		Ø12 x Ø6.8 x 6.5 busch with flange	4
6		M5x10 Ø11 ISO 7380 Allen screw	4
7		Ø10 x Ø5.3x1 matalic washer	4
8		M5 ISO 7380 Allen screw cap	6
9		M5 Ø12 x Ø6 x 9 M5 Silentblock	4

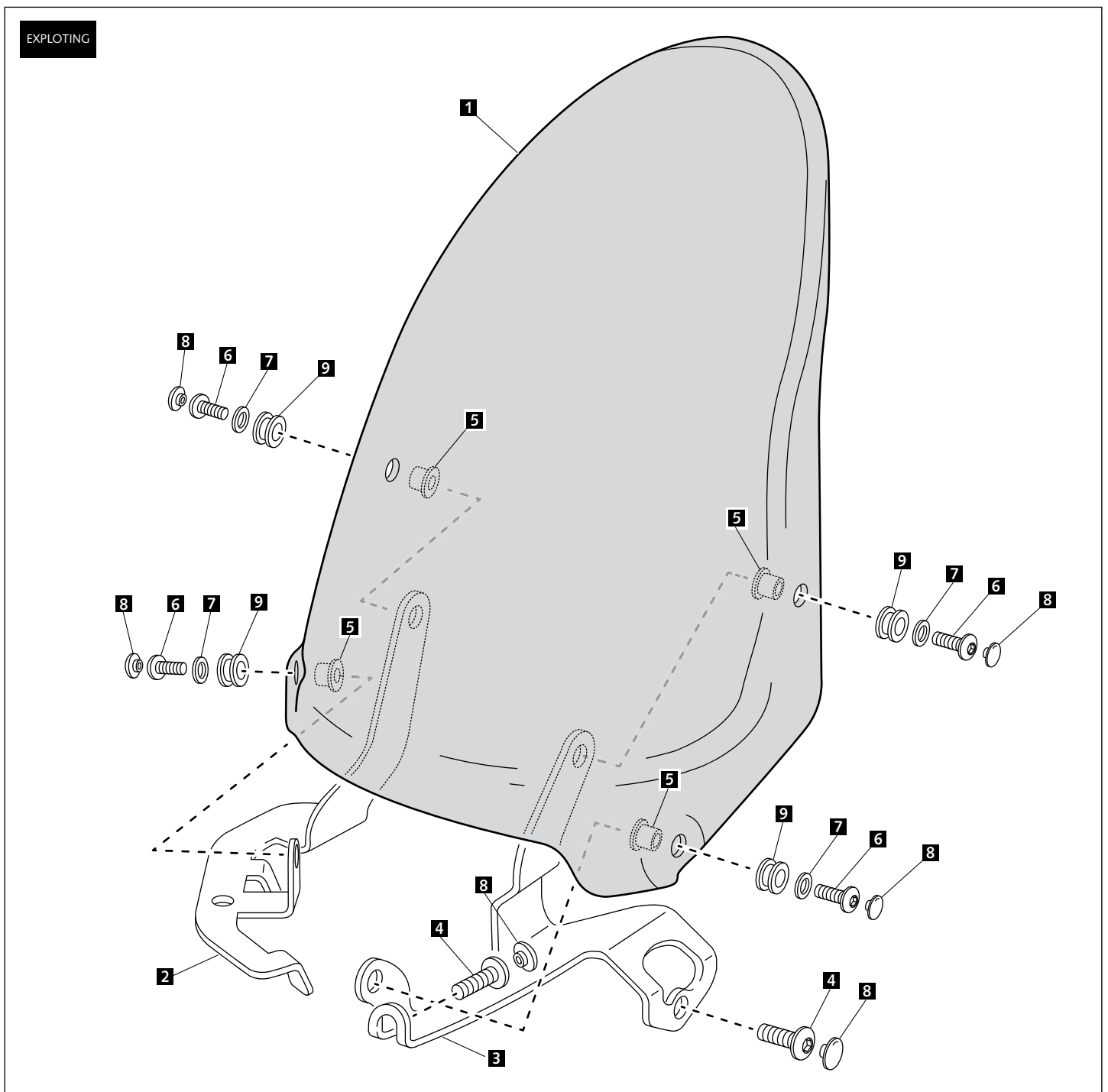
REAR MUDGUARD ADAPTABLE TO DUCATI SCRAMBLER

MOUNTING INSTRUCTIONS



REAR MUDGUARD ADAPTABLE TO DUCATI SCRAMBLER

MOUNTING INSTRUCTIONS



Look through our comprehensive collection of motorcycle frame and body right away.