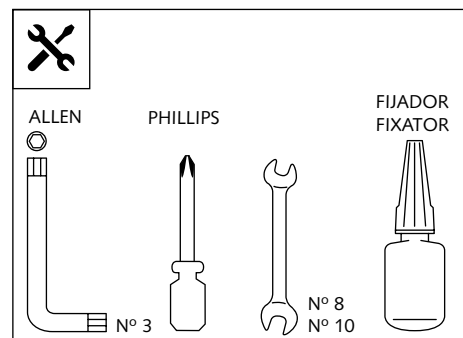


- HANDPROTECTORS FOR -  
**SUZUKI DL1000 V-STROM '14 -**



**Ref.: 8950**

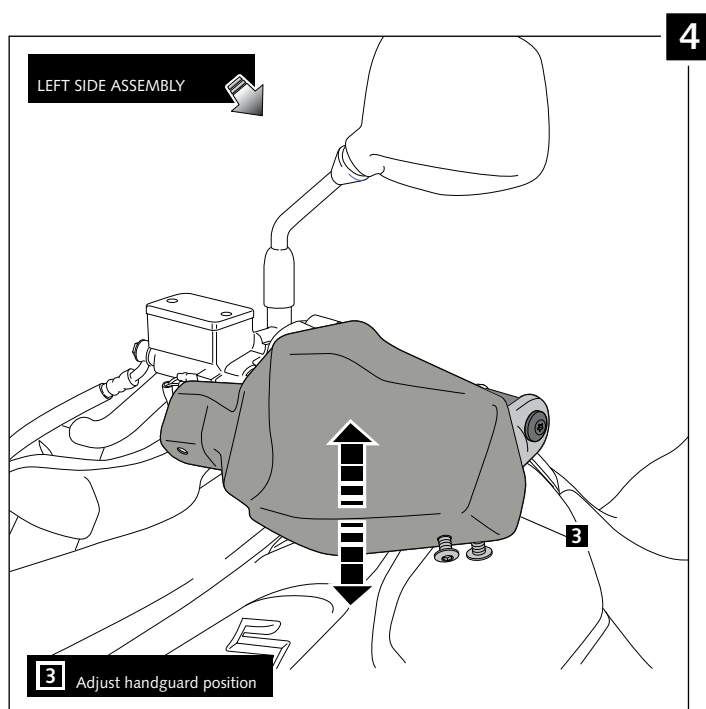
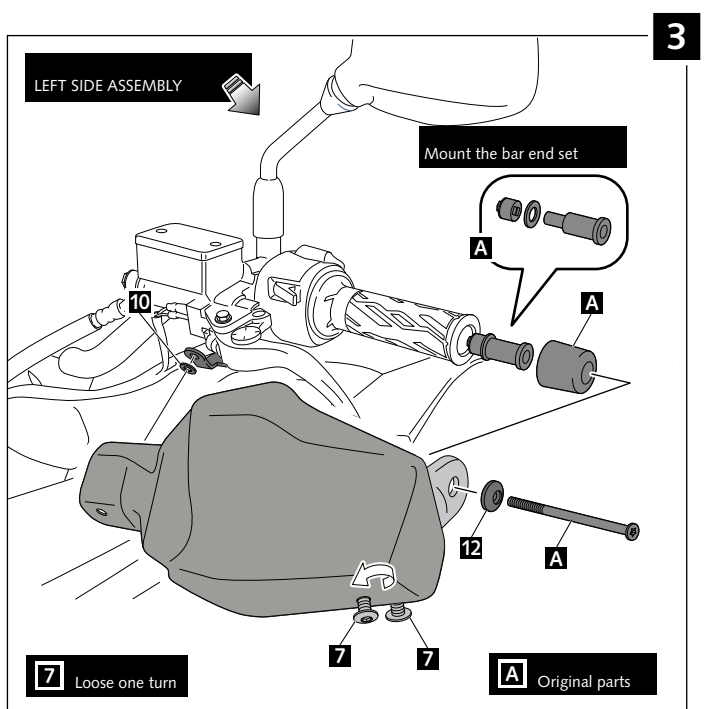
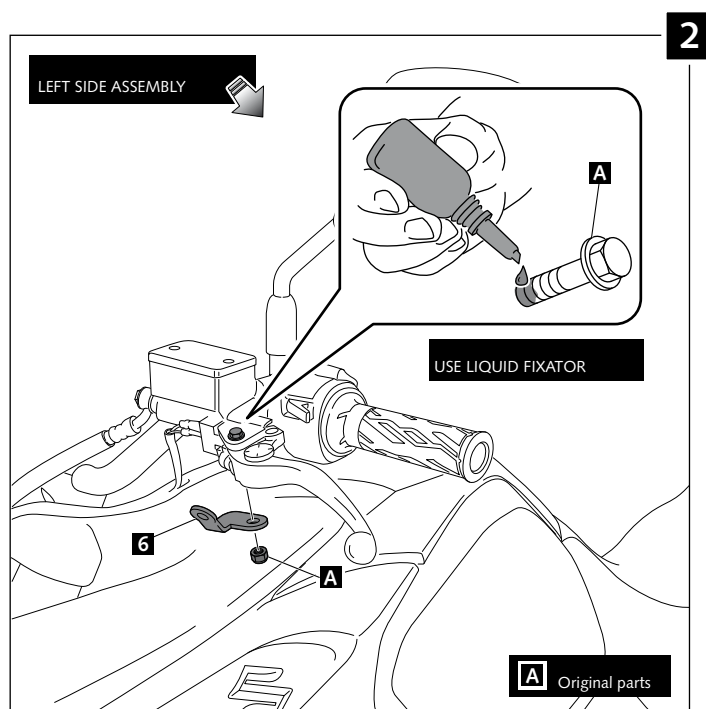
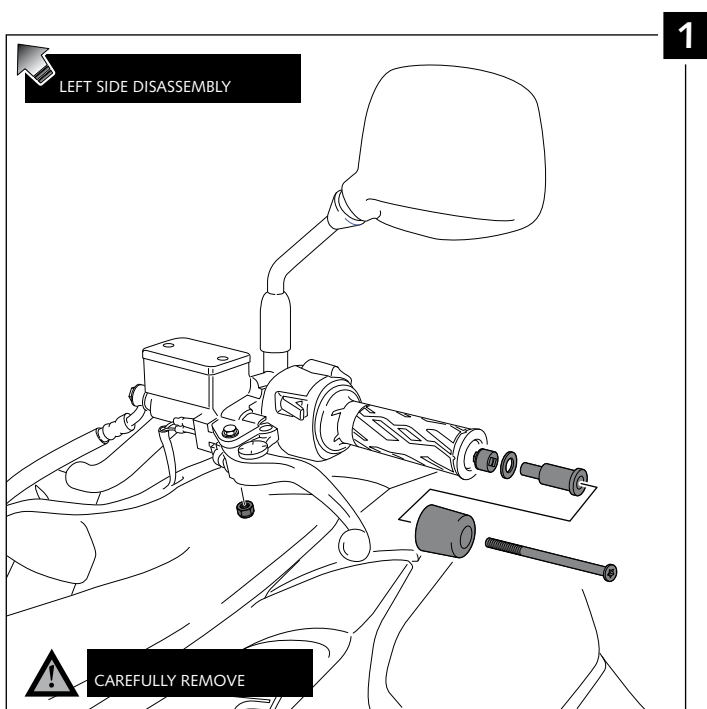


1 person
 35 min
  Easy
  Intermediate
  Difficult

ID.	PART	DESCRIPTION	QTY.
1		Right handguard	1
2		Ø6.5 Right handlebar anchoring part (supplied mounted with handguard)	1
3		Left handguard	1
4		Ø6.5 Left handlebar anchoring part (supplied mounted with handguard)	1
5		Right metal support (R)	1
6		Left metal support (L)	1
7		M5x10 Ø11 ISO 7380 Allen screw	6
8		M5x1 Nylon washer	6
9		Ø4,5xØ11,5x2mm Rubber washer (supplied mounted with handguard)	4
10		Ø4,5xØ14x4mm Rubber washer	2
11		M5 Special nut (supplied already mounted)	4
12		Ø30 x Ø6 plastic washer	2
13		M5 ISO 7380 Allen screw cap	6
14		Stickers set	1

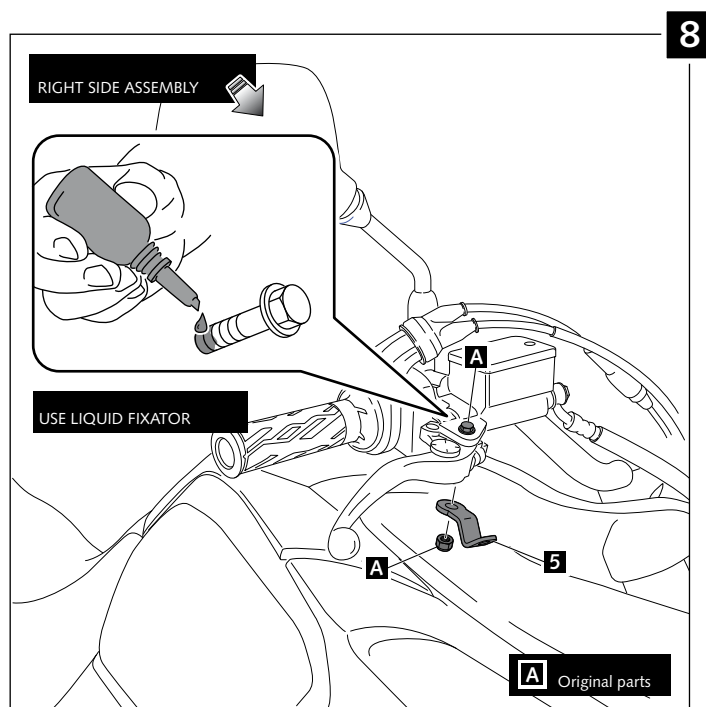
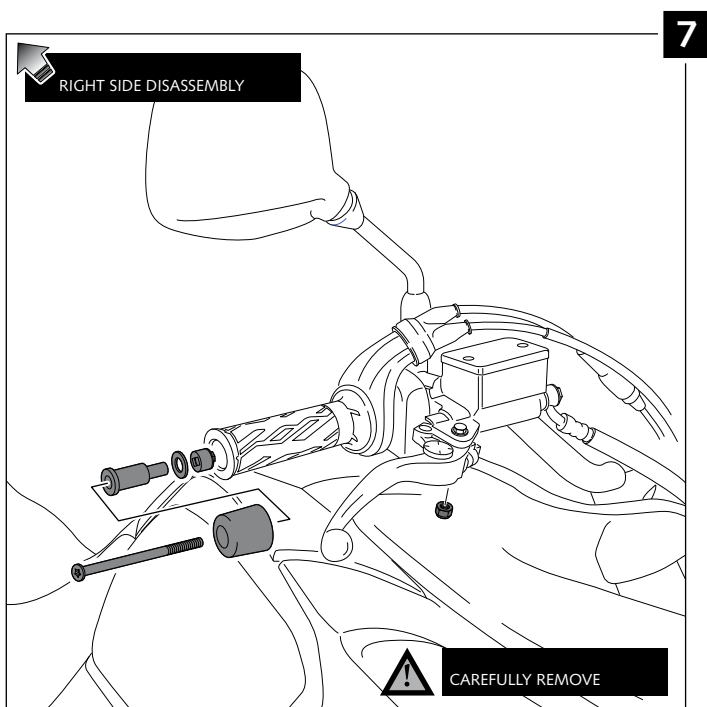
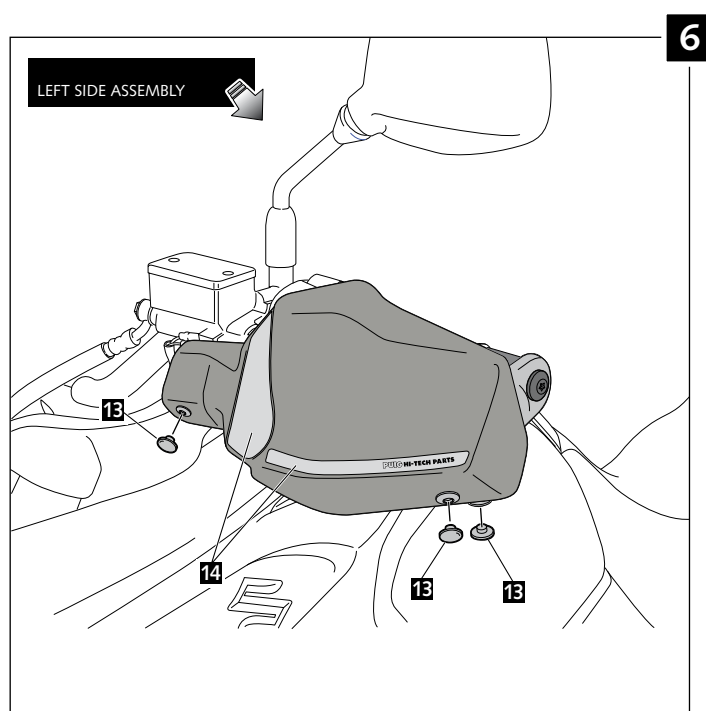
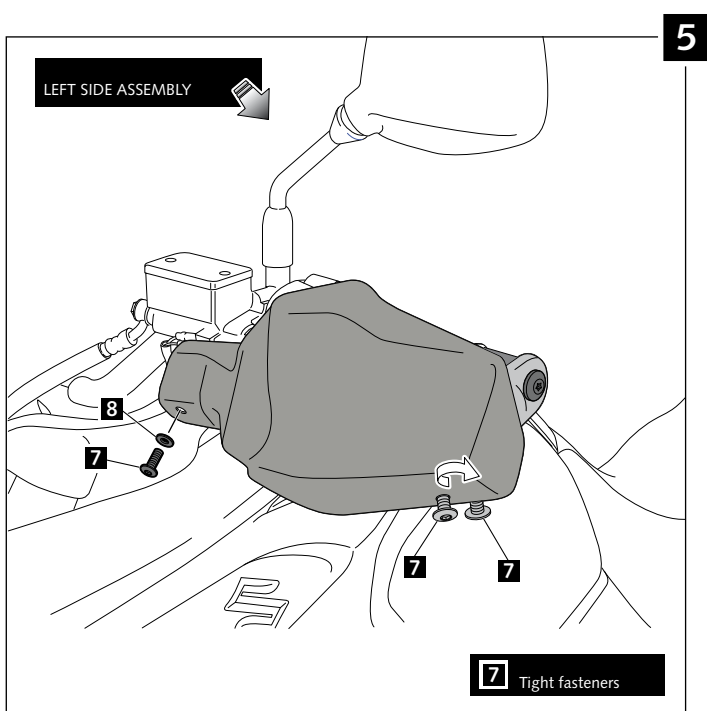
## - HANDPROTECTORS FOR - SUZUKI DL1000 V-STROM '14 -

### - MOUNTING INSTRUCTIONS -



## - HANDPROTECTORS FOR - SUZUKI DL1000 V-STROM '14 -

### - MOUNTING INSTRUCTIONS -



## D - HANDPROTECTORS FOR - SUZUKI DL1000 V-STROM '14 -

### - MOUNTING INSTRUCTIONS -

