

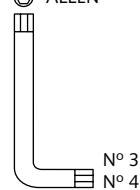
- HANDPROTECTORS FOR - HONDA CB500X '13 -



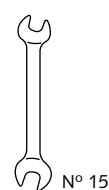
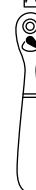
Ref.: 8943



ALLEN



PHILLIPS



1 person



35 min

Easy

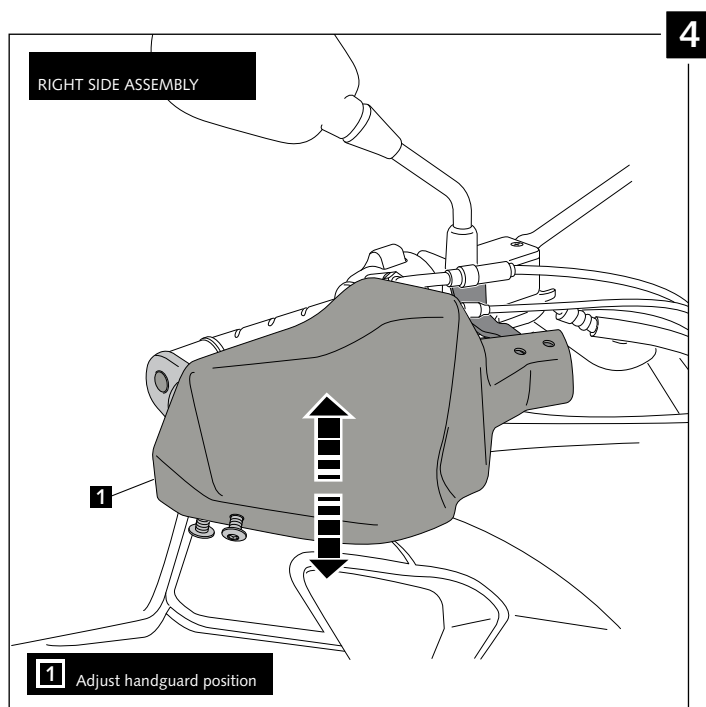
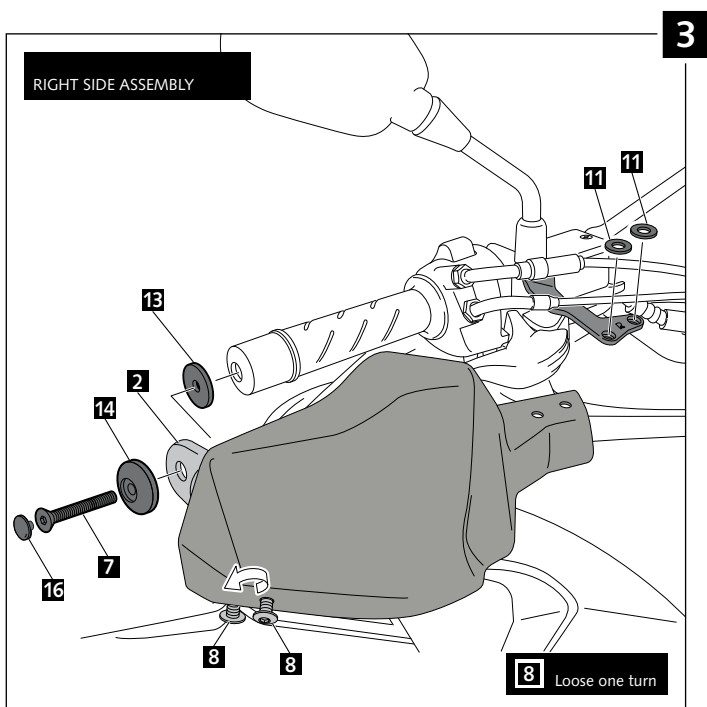
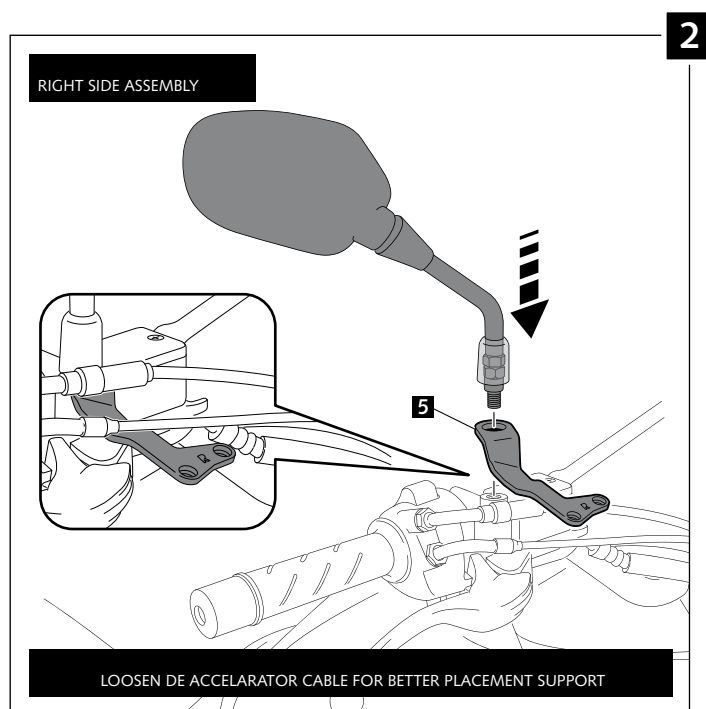
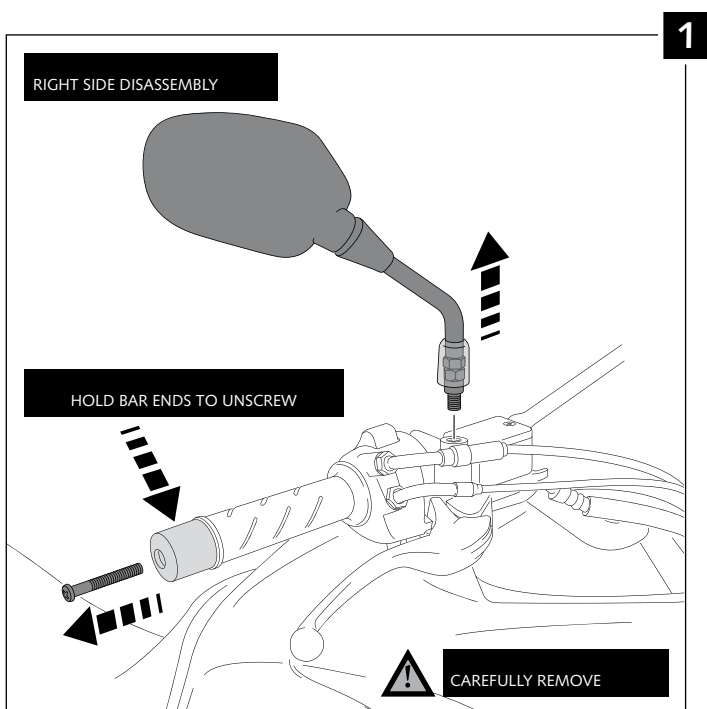
Intermediate

Difficult

ID.	PART	DESCRIPTION	QTY.
1		Right handguard	1
2		Ø6.5 right handlebar anchoring part (supplied mounted with handguard)	1
3		Left handguard	1
4		Ø6.5 left handlebar anchoring part (supplied mounted with handguard)	1
5		Right metal support (R)	1
6		Left metal support (L)	1
7		M6x75 DIN 7991 Allen screw	2
8		M5x10 Ø11 ISO 7380 Allen screw	8
9		M5x1 Nylon washer	8
10		Ø4,5xØ11,5x2mm Rubber washer (supplied mounted with handguard)	4
11		Ø4,5xØ14x4mm Rubber washer	4
12		M5 Special nut (supplied already mounted)	4
13		Ø30xØ6,5x1mm Rubber washer	2
14		Ø30 x Ø6 plastic washer	2
15		M5 ISO 7380 Allen screw cap	8
16		M6 DIN7991 Allen screw cap	2
17		Stickers set	1

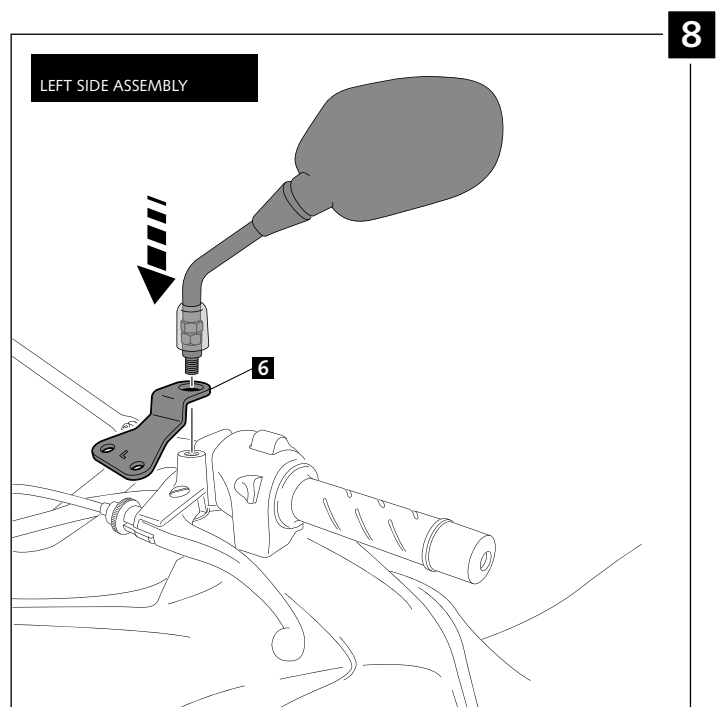
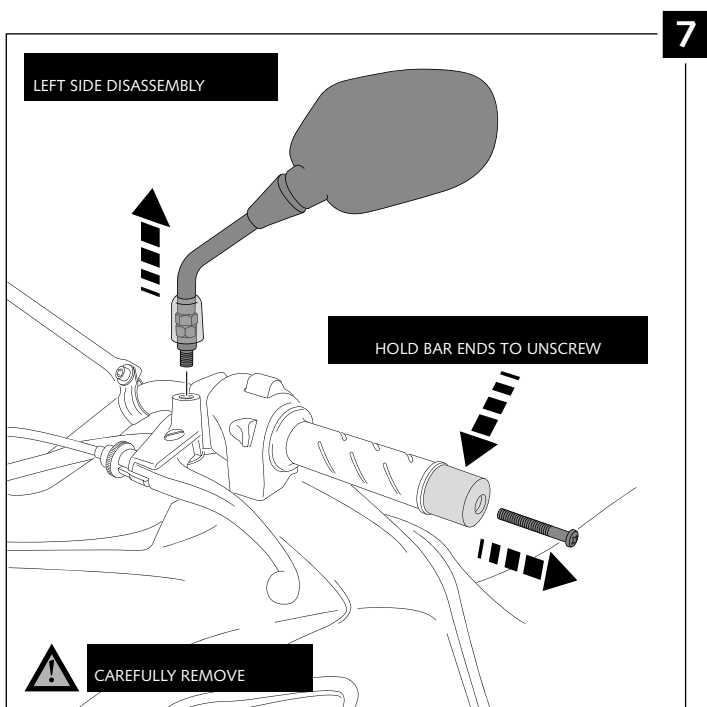
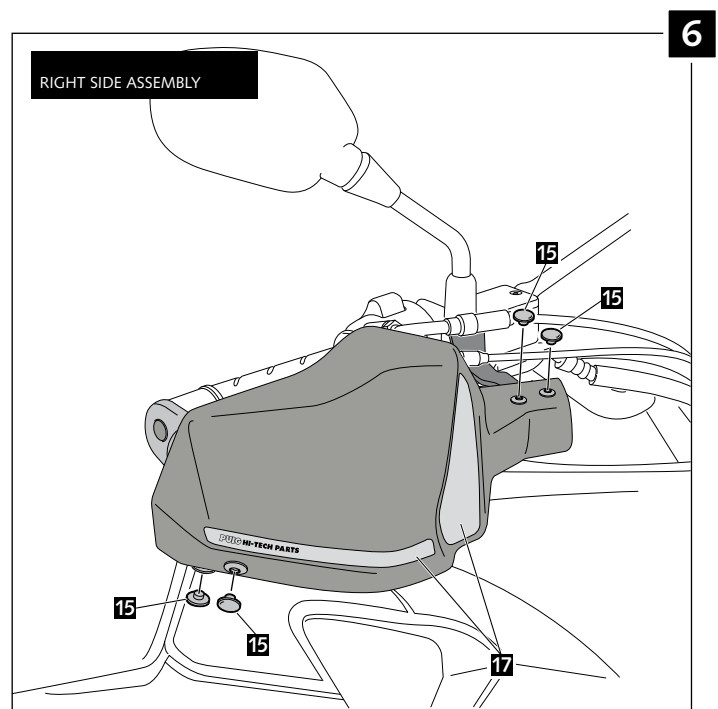
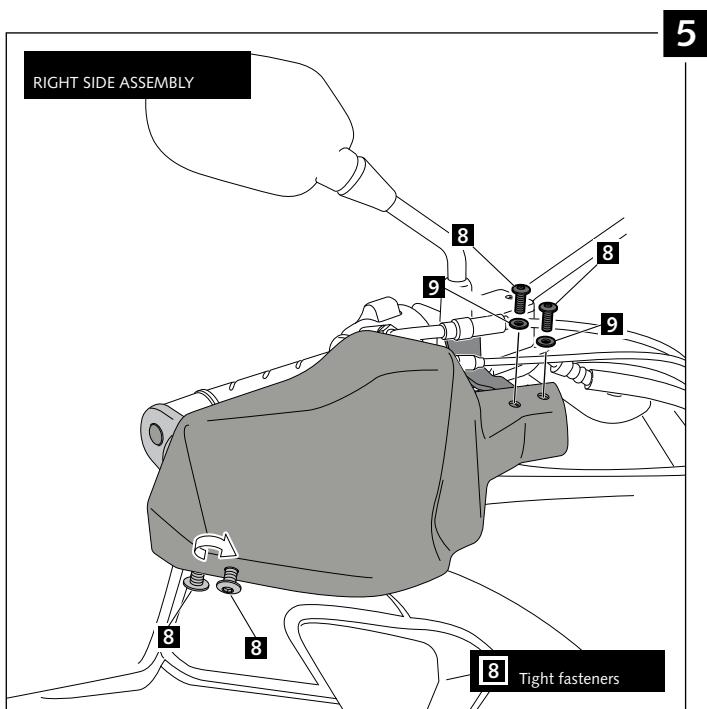
- HANDPROTECTORS FOR - HONDA CB500X '13 -

- MOUNTING INSTRUCTIONS -



HONDA CB500X '13 -

- MOUNTING INSTRUCTIONS -



- HANDPROTECTORS FOR - HONDA CB500X '13 -

- MOUNTING INSTRUCTIONS -

