

SCREEN FOR HONDA NC 750 X - '16 -

Ref.: 8909
(Mod. SPORT)



Ref.: 8910
(Mod. TOURING)







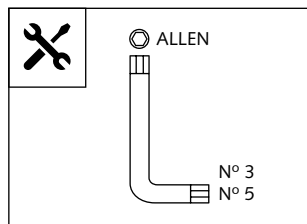
Mod. SPORT





Mod. TOURING



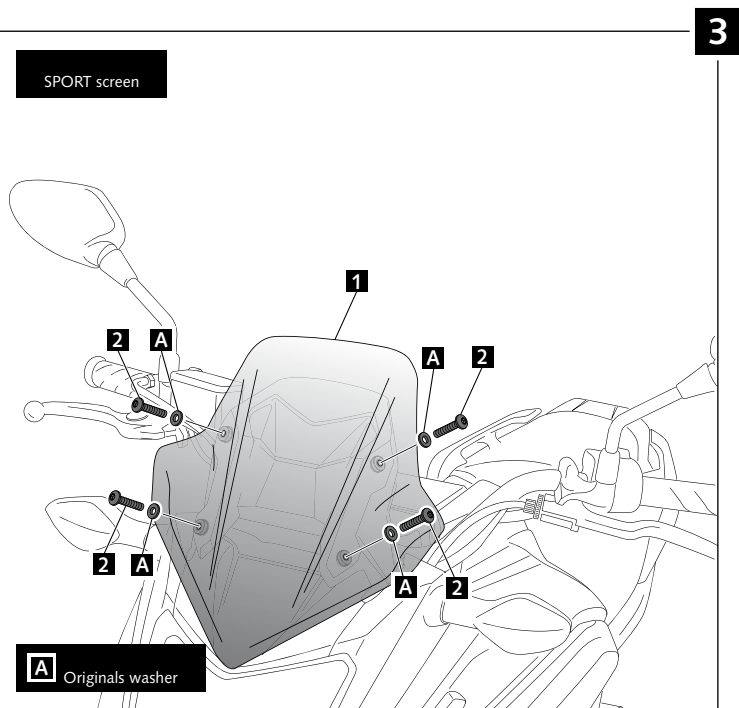
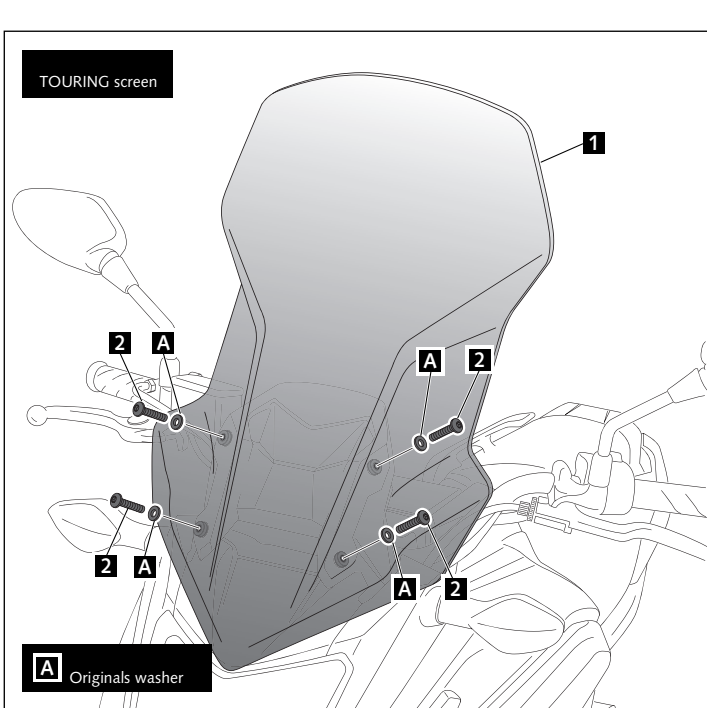
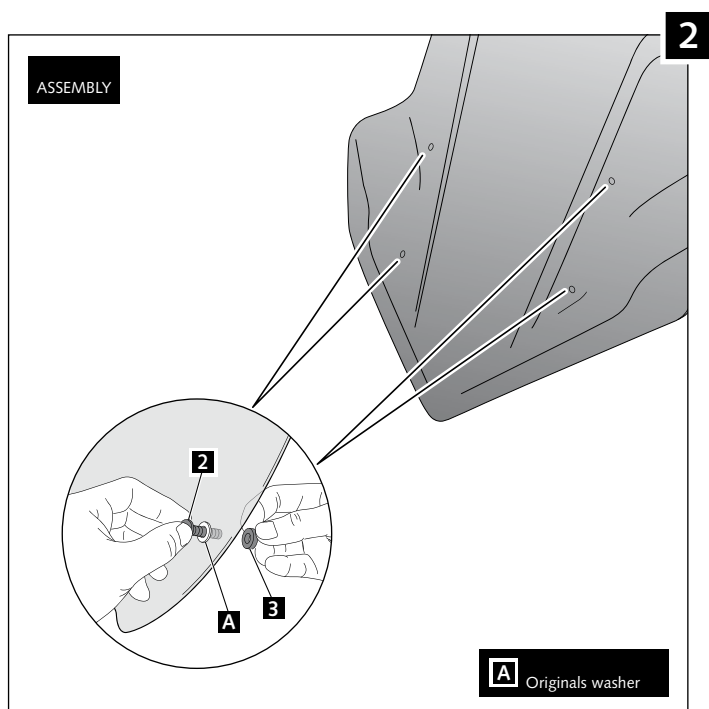
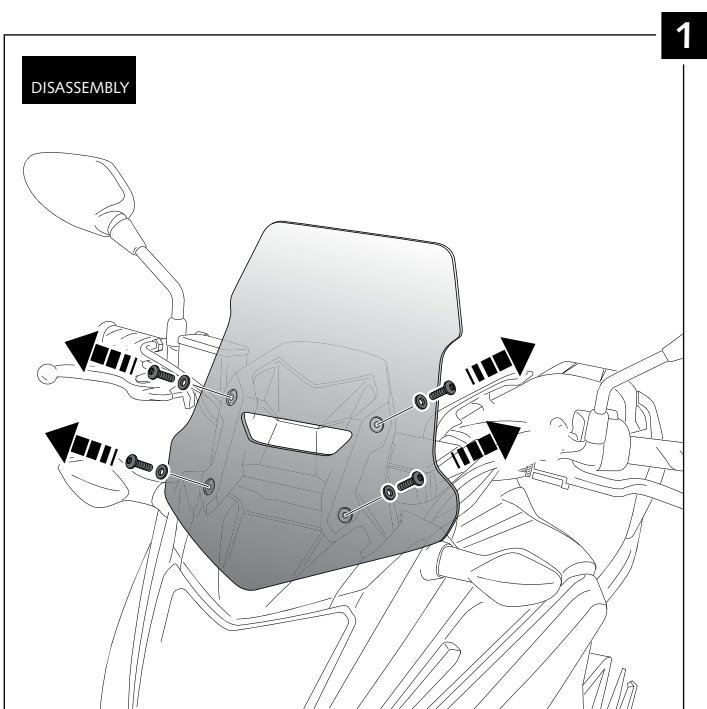
ID.	PART	DESCRIP.	QTY.
1		SPORT screen (Ref. 8909)	1
		TOURING screen (Ref. 8910)	
2		M5 x 30 ISO 7380 Allen screw	4
3		M5x4 rubber washer	4



		Easy
		Intermediate
		Difficult
1 person	10 min	

- SCREEN FOR -
HONDA NC 750 X - '16 -

- MOUNTING INSTRUCTIONS -



MULTI-ADJUSTABLE VISOR



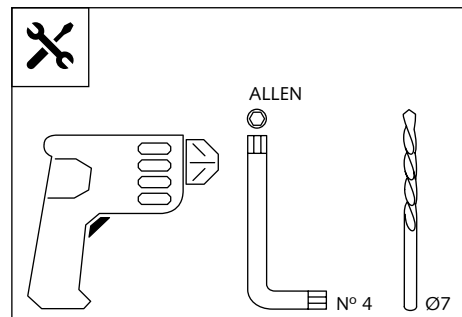
Ref.: 6007

Ref.: 5852

Ref.: 5853

Smoke

Clear



1 person



15 min

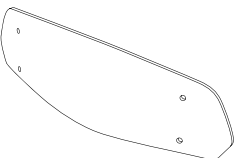




Easy

Intermediate

Difficult

Note:

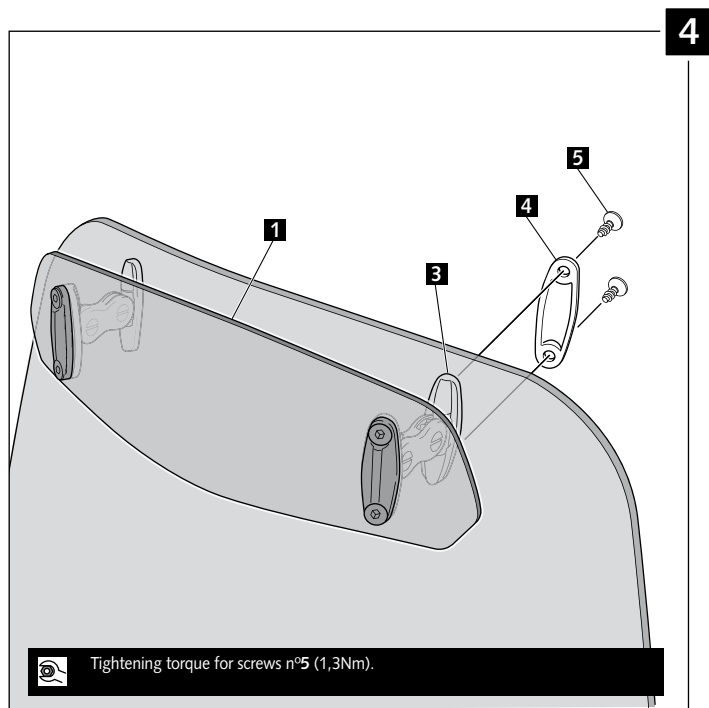
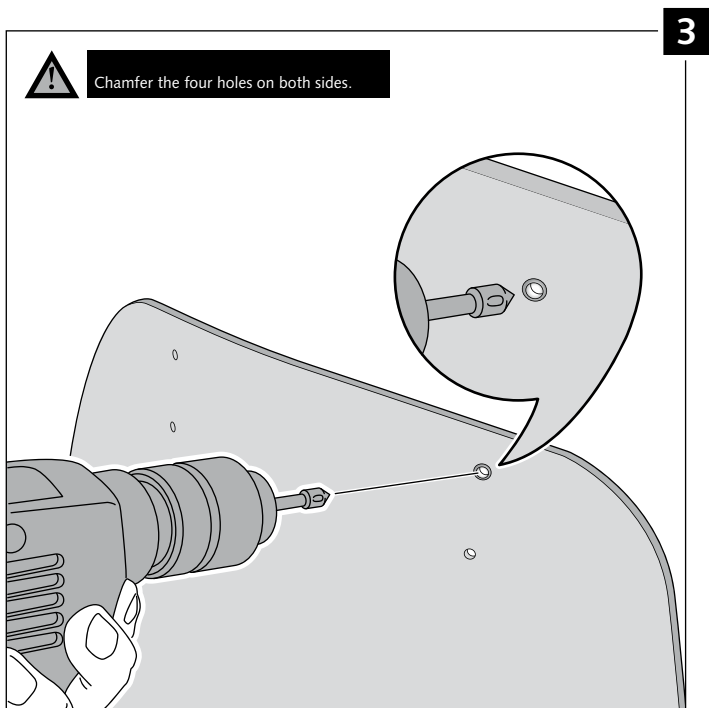
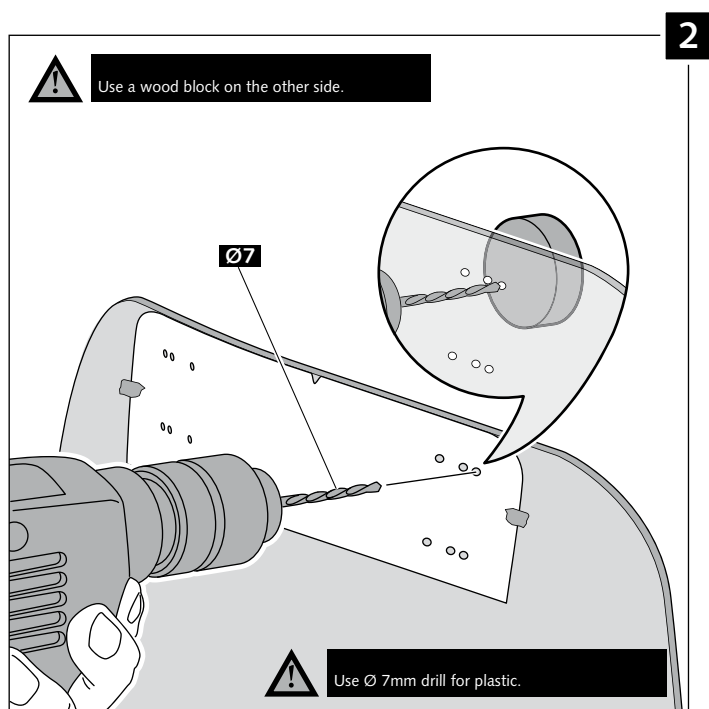
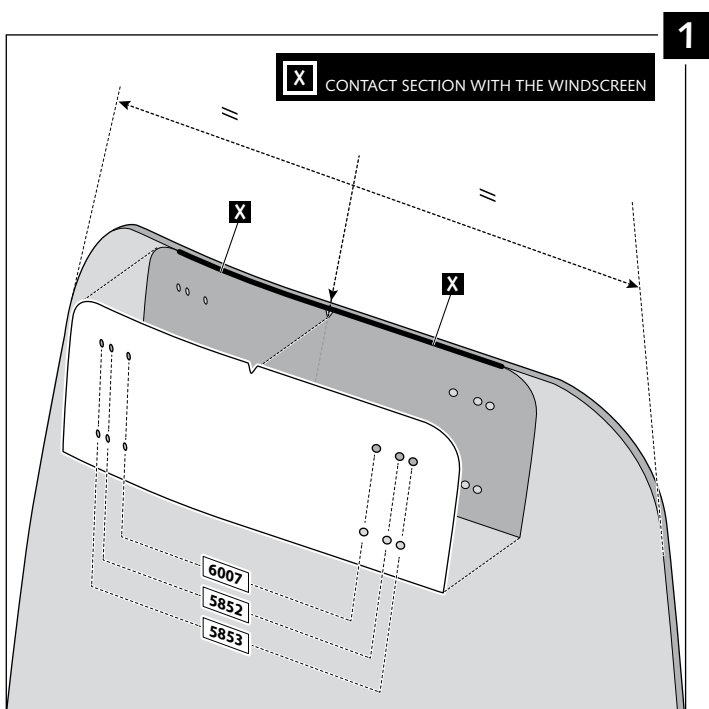
If the visor is supplied along with the windscreen, the windscreen will come factory-drilled so no drilling is necessary.

ID.	PART	DESCRIPTION	QTY.
1		Visor	1
2		Template	1
3		Multi-adjustable mechanism	2
4		Cap	4
5		Plastic thread fastener M6x12	8

MULTI-ADJUSTABLE VISOR

- MOUNTING INSTRUCTIONS -

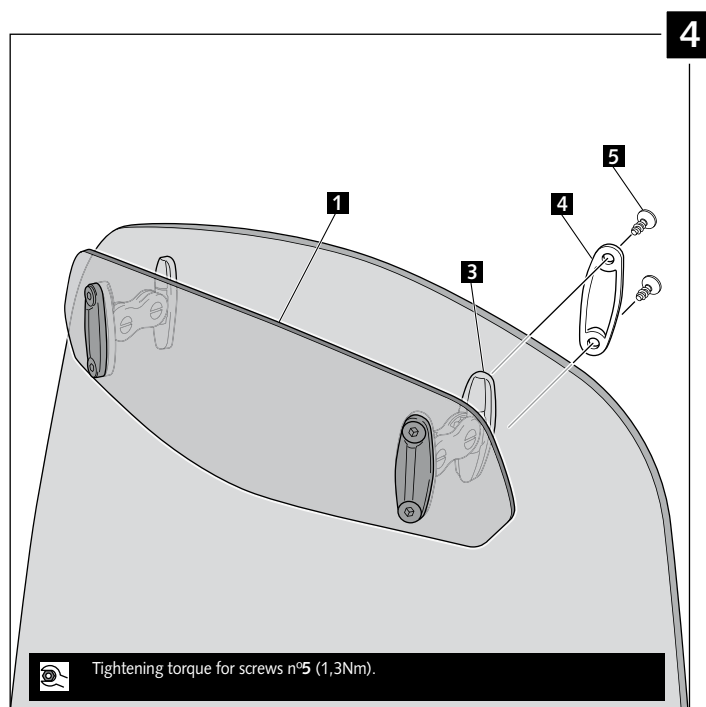
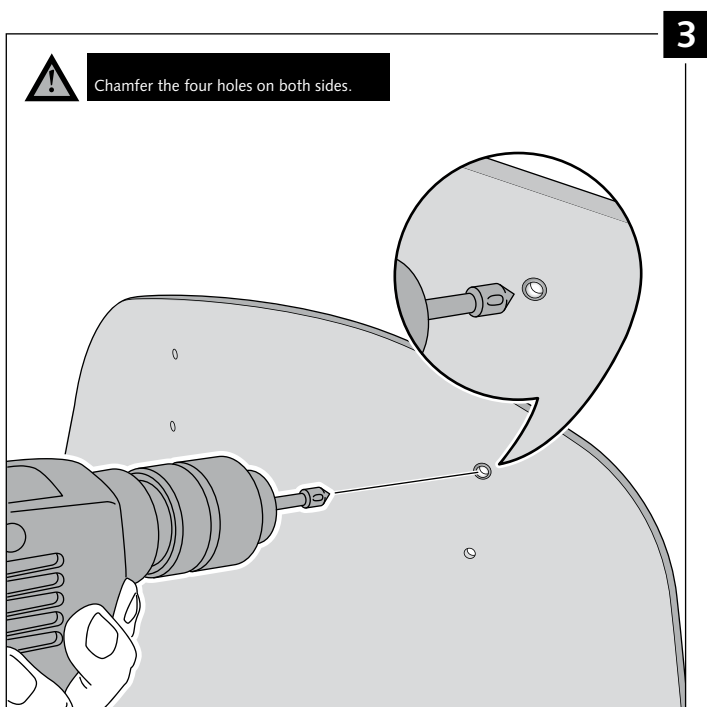
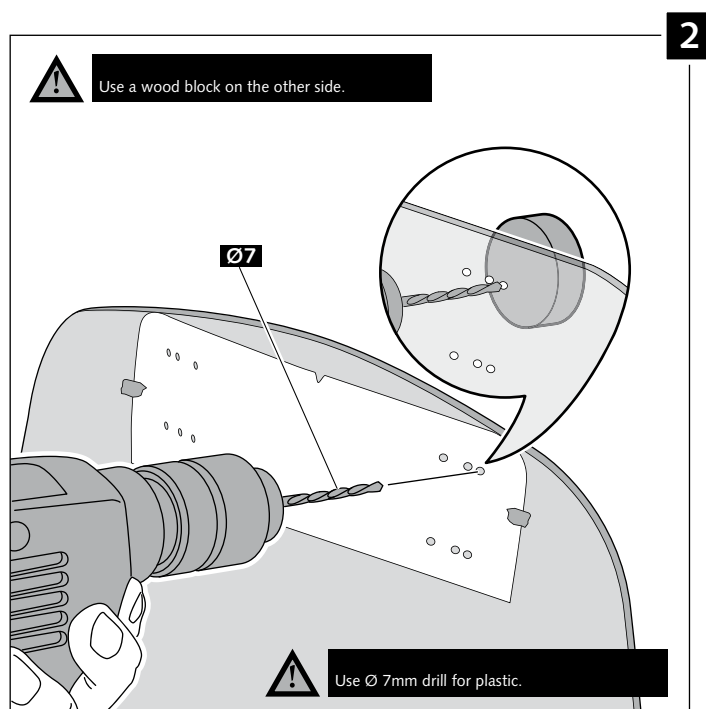
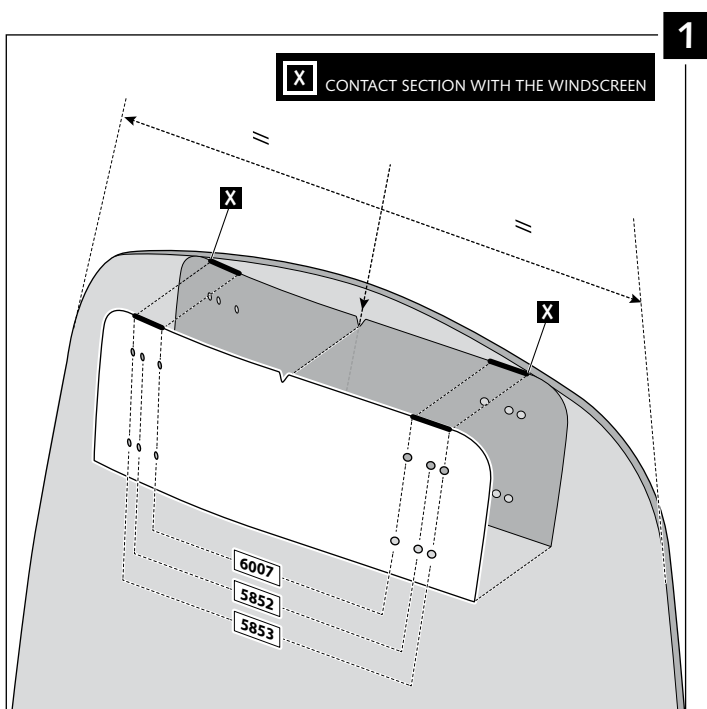
TYPE A



MULTI-ADJUSTABLE VISOR

- MOUNTING INSTRUCTIONS -

- TYPE B



MULTI-ADJUSTABLE VISOR

- MOUNTING INSTRUCTIONS -

- TYPE C

