

# HONDA CB500X '16-

## M O U N T I N G I N S T R U C T I O N S

REF 8901

**TOURING SCREEN**



1 Person



10 min



EASY

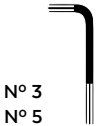


FIX

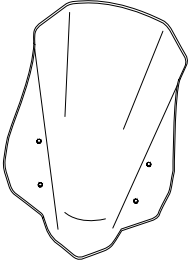





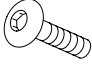



N° 8  
N° 11

ALLEN



N° 3  
N° 5

ID.	PART	DESCRIPTION	QTY.	REF.:
1		TOURING screen	1	8901A/F/H/N/R/WM3
2		M5 graffilated nut	4	TUERC-D6923-255
3		M5 DIN 9021 Ø5,3x Ø15 x1,2 metallic washer (Black)	4	ARAND-PD5---152
4		Ø4,5 x Ø14 x 4mm rubber washer	4	ARAND-GDI3D5X4-
5		M5x1 nylon washer	4	ARNV0000000245
6		Special screw M5x13 + interior thread M5x8	4	TORNI-EM5---514
7		M5x11 Ø11 ISO 7380 allen screw	4	TORNI-AI----520
8		M5 ISO 7380 screw cap	4	TAPON-----85

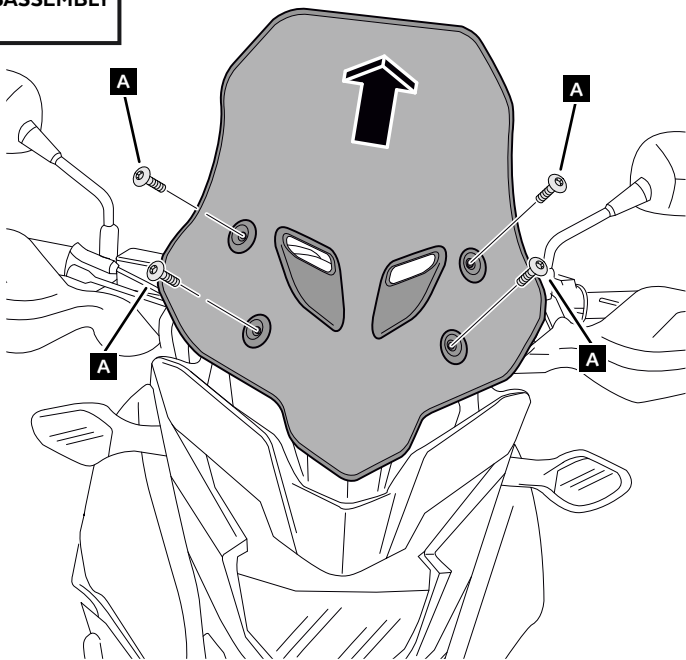
# HONDA CB500X '16-

## - MOUNTING INSTRUCTIONS -

**1**

DISASSEMBLY

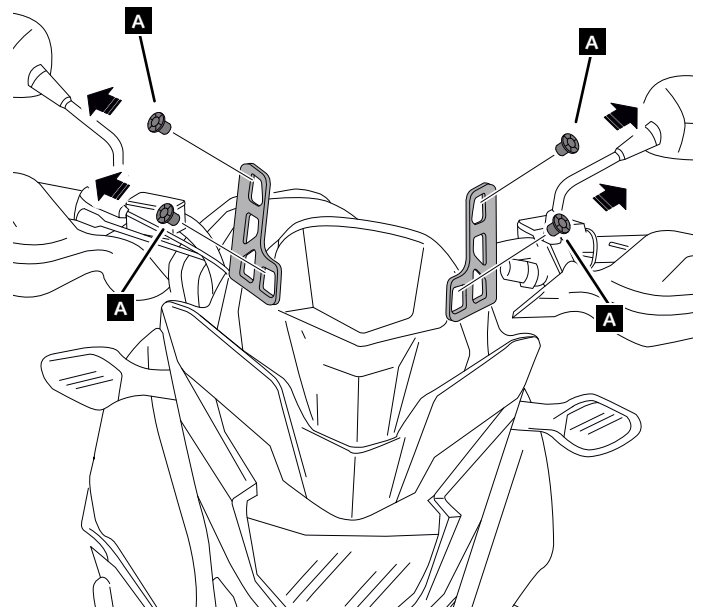
**A** Original screw



**2**

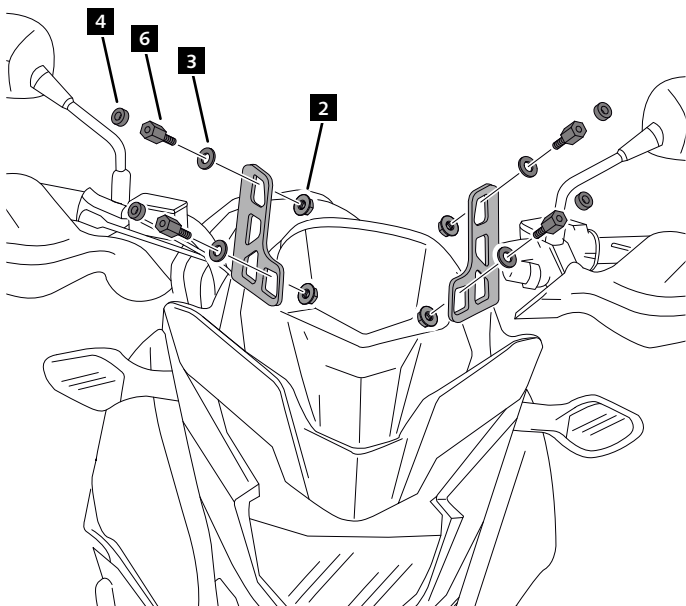
DISASSEMBLY

**A** Original screw



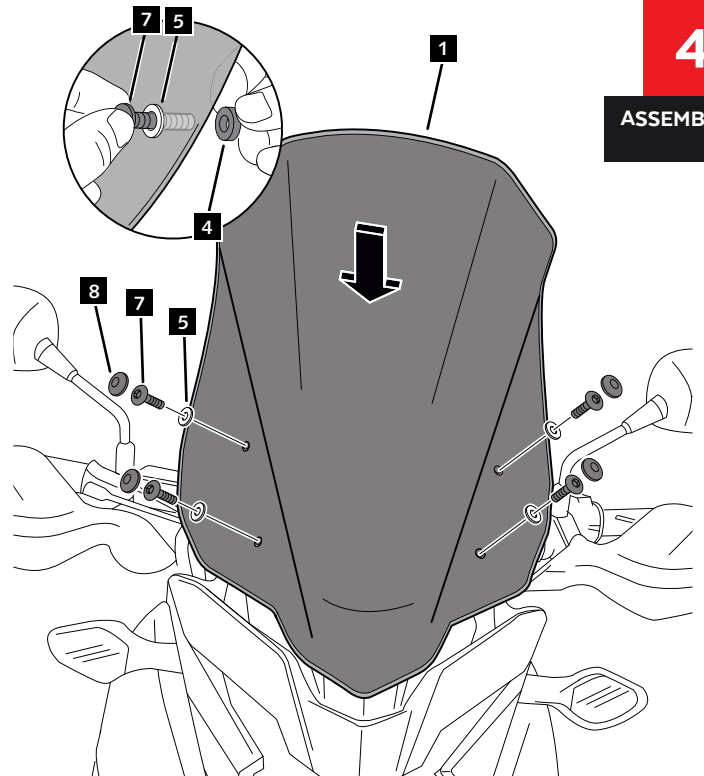
**3**

ASSEMBLY



**4**

ASSEMBLY



## MULTI-ADJUSTABLE VISOR



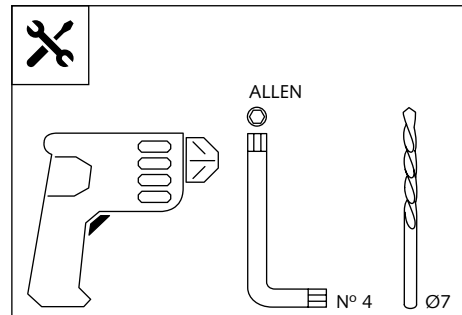
Ref.: 6007

Ref.: 5852

Ref.: 5853

Smoke

Clear



1 person



15 min

Easy

Intermediate

Difficult

Nota/Note:

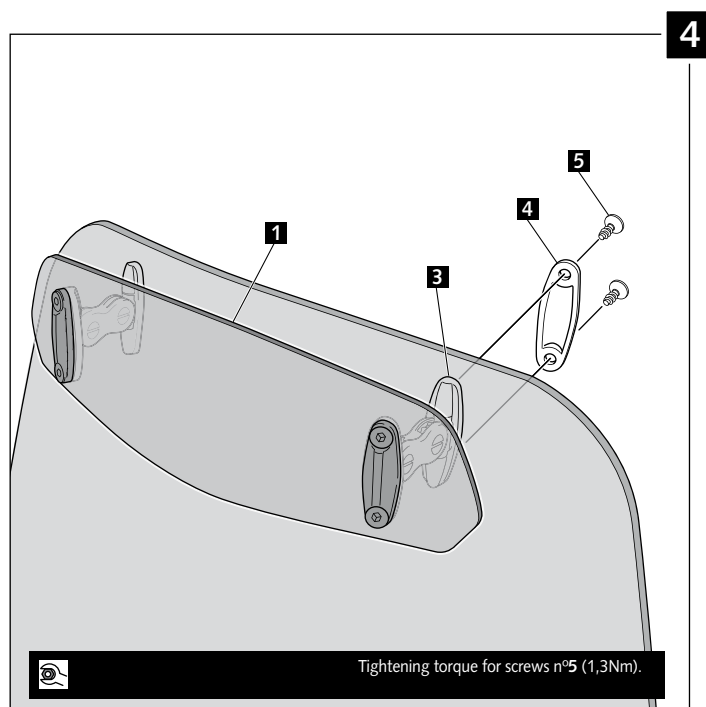
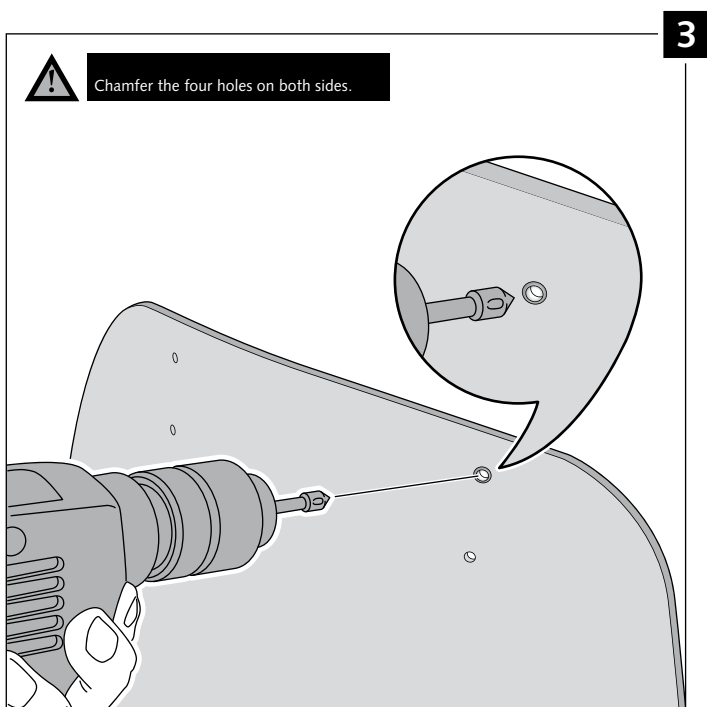
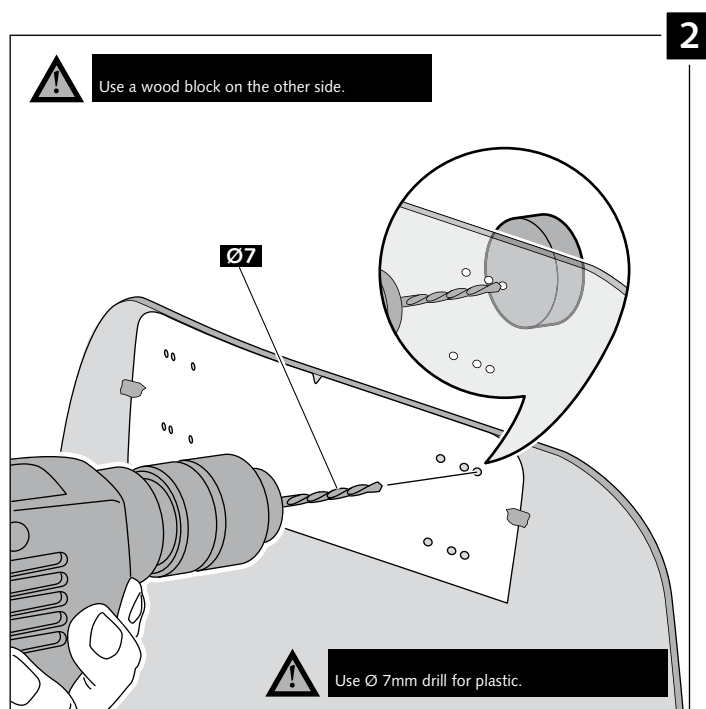
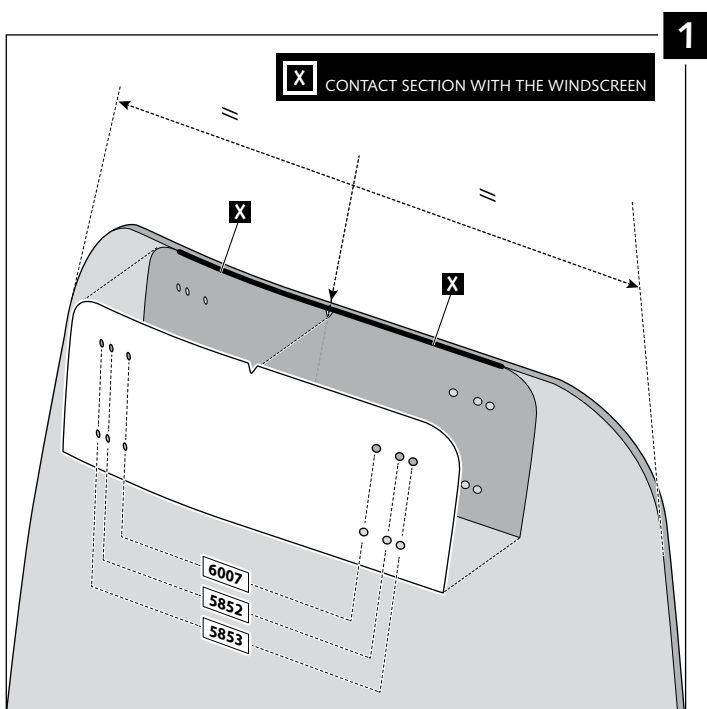
If the visor is supplied along with the windscreen, the windscreen will come factory-drilled so no drilling is necessary.

ID.	PART	DESCRIPTION	QTY.
1		Visor	1
2		Template	1
3		Multi-adjustable mechanism	2
4		Cap	4
5		Plastic thread fastener M6x12	8

# MULTI-ADJUSTABLE VISOR

## - MOUNTING INSTRUCTIONS -

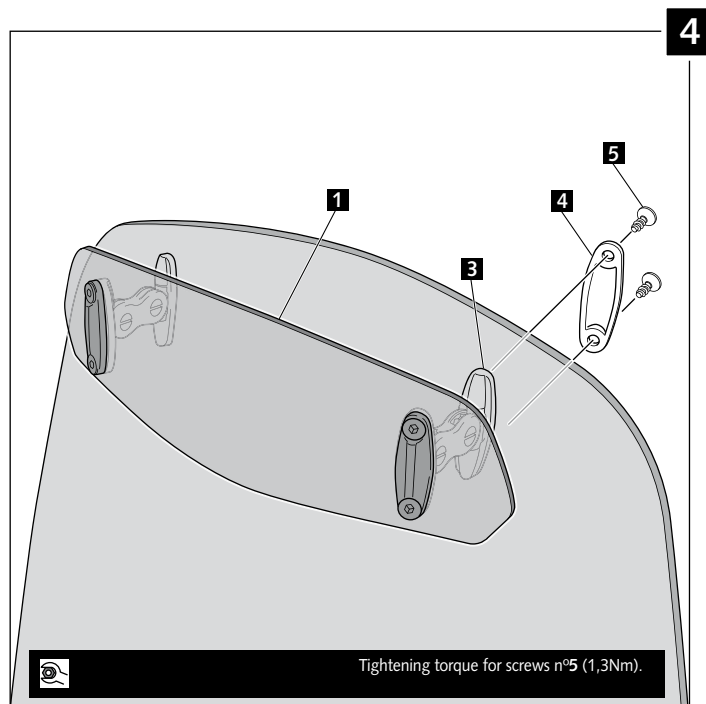
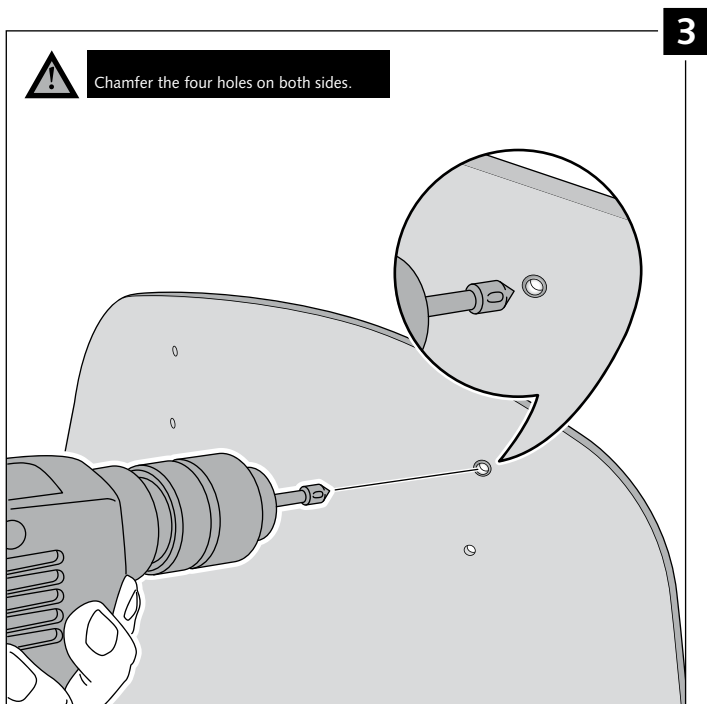
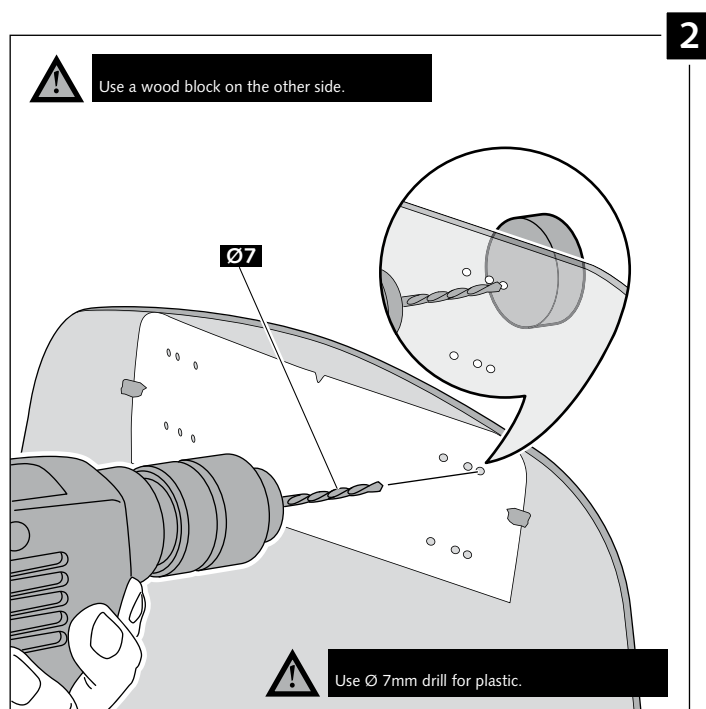
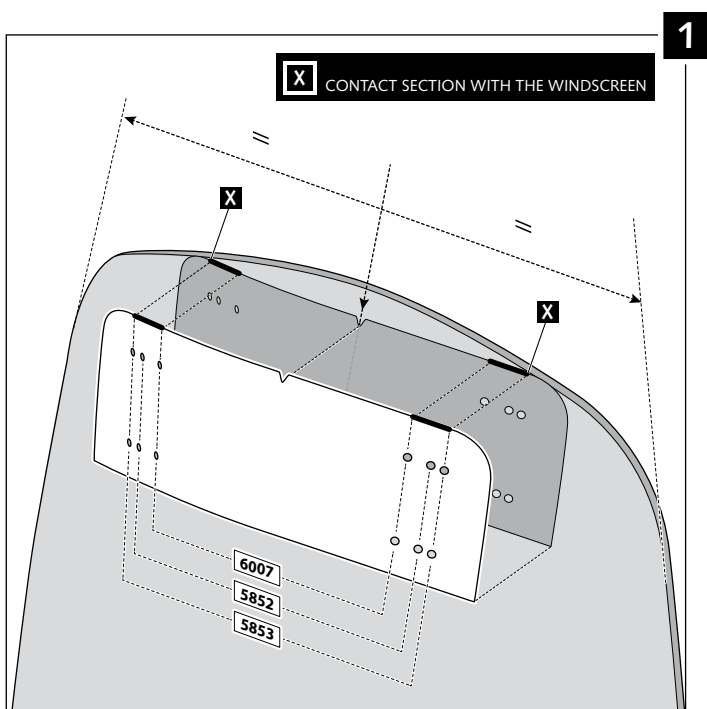
### TYPE A



## MULTI-ADJUSTABLE VISOR

### - MOUNTING INSTRUCTIONS -

#### TYPE B



## MULTI-ADJUSTABLE VISOR

### - MOUNTING INSTRUCTIONS -

### TYPE C

