

## INSTRUCTIONS TO ASSEMBLE

You should first mount one side of the engine guard then the other, otherwise the engine will be unsupported. All the screws replaced, should be tightened to the torque specified in the oem maintenance manual for your motorcycle. If no torque specifications are provided in the oem maintenance manual, may be used 54Nm for all M10 screws and 22Nm for the M8 screw.

Medium strength liquid thread-locker (i.e., "Loctite") should be used to secure all screws, bolts and nuts.

All screws, bolts and nuts should be checked after driving the first 50 km to ensure that all are tightened to the proper torque.

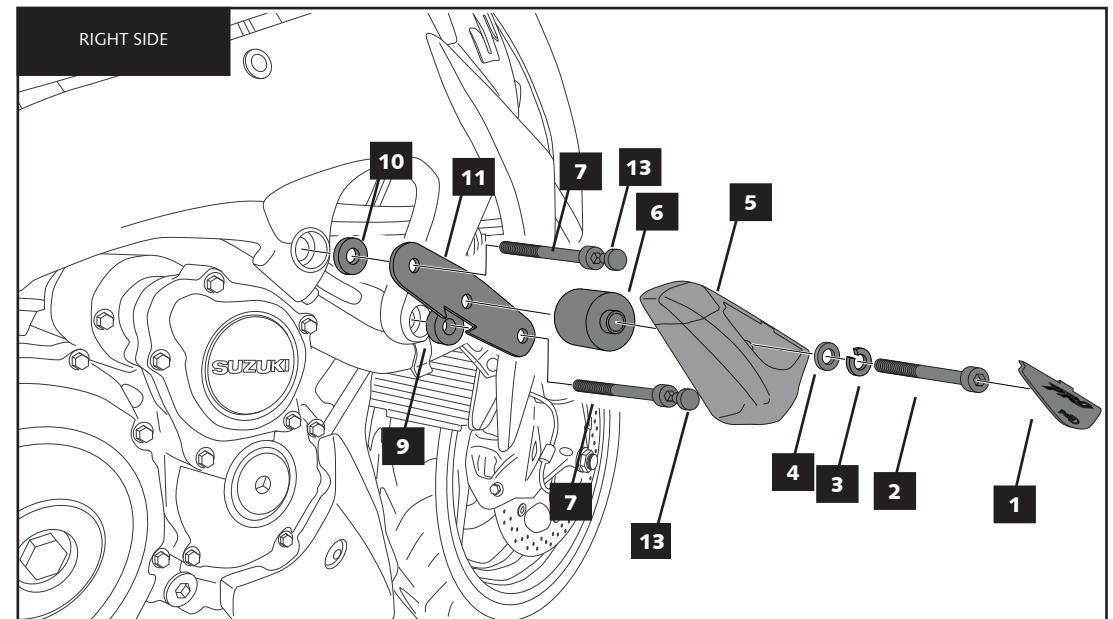
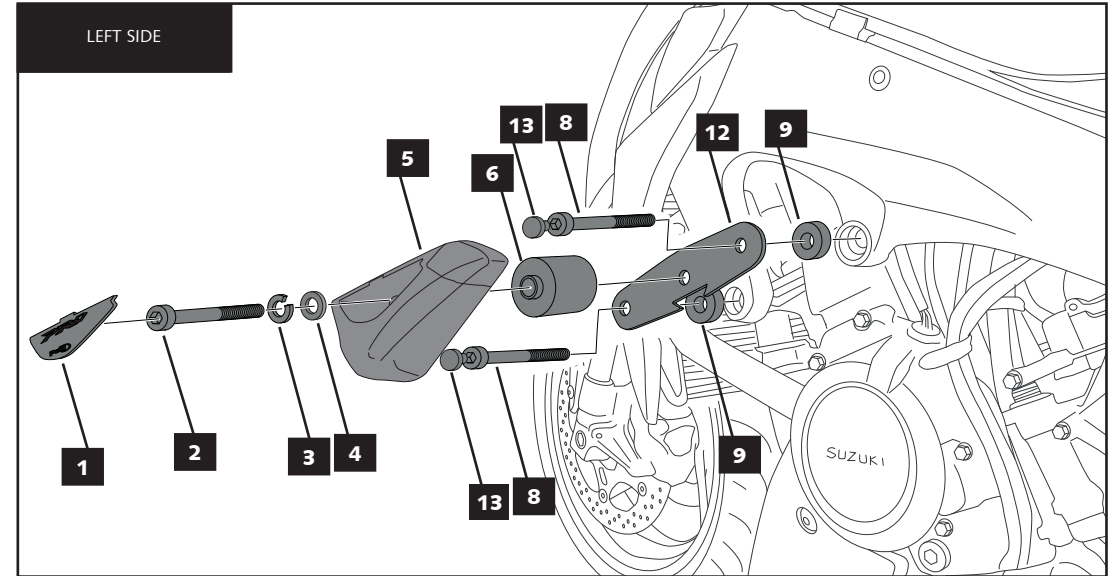
ID.	DESCRIPTION	QTY.
1	Plastic lids	2
2	M10/150X70 DIN912 screw	2
3	M10 DIN6789/A washer	2
4	DIN125/A washer	2
5	Nylon protector	2
6	Aluminium arrowhead	2
7	M10/125X70 DIN912 screw	2
8	M10/125X60 DIN912 screw	2
9	Aluminium cylinder $\varnothing 20 \times 14$	3
10	Aluminium cylinder $\varnothing 20 \times 6$	1
11	Offset right hand side	1
12	Offset left hand side	1
13	M10 Plastic cap screw	4

FOR TO ASSEMBLE THE CRASH PADS, IF YOU ARE NOT A TRAINED MECHANIC, PLEASE CONTACT A SPECIALIST. MOTOPLASTIC, S.A. TAKES NO RESPONSIBILITY FOR DAMAGES CAUSED BY IMPROPER INSTALLATION. THE USE OF CRASH PADS DO NOT GUARANTEE A FULL PROTECTION IN CASE OF ACCIDENT. MOTOPLASTIC-PUIG DECLINE ANY RESPONSIBILITY IN CASE OF MOTORCYCLE DAMAGE.

## MOUNTING INSTRUCTIONS

CRASH PADS PRO FOR SUZUKI GSX S-1000 15'

Ref.: 7704



Rely on Puig for quality and long-lasting products.