

### PREVENTION

- Use water and neutral soap to clean the windshield.
- Check the tightening of the fasteners periodically.
- Park the scooter facing the sun, avoiding the sun-reflection effect that may damage some parts.
- Park if possible on even surfaces.

Thanks for your attention.

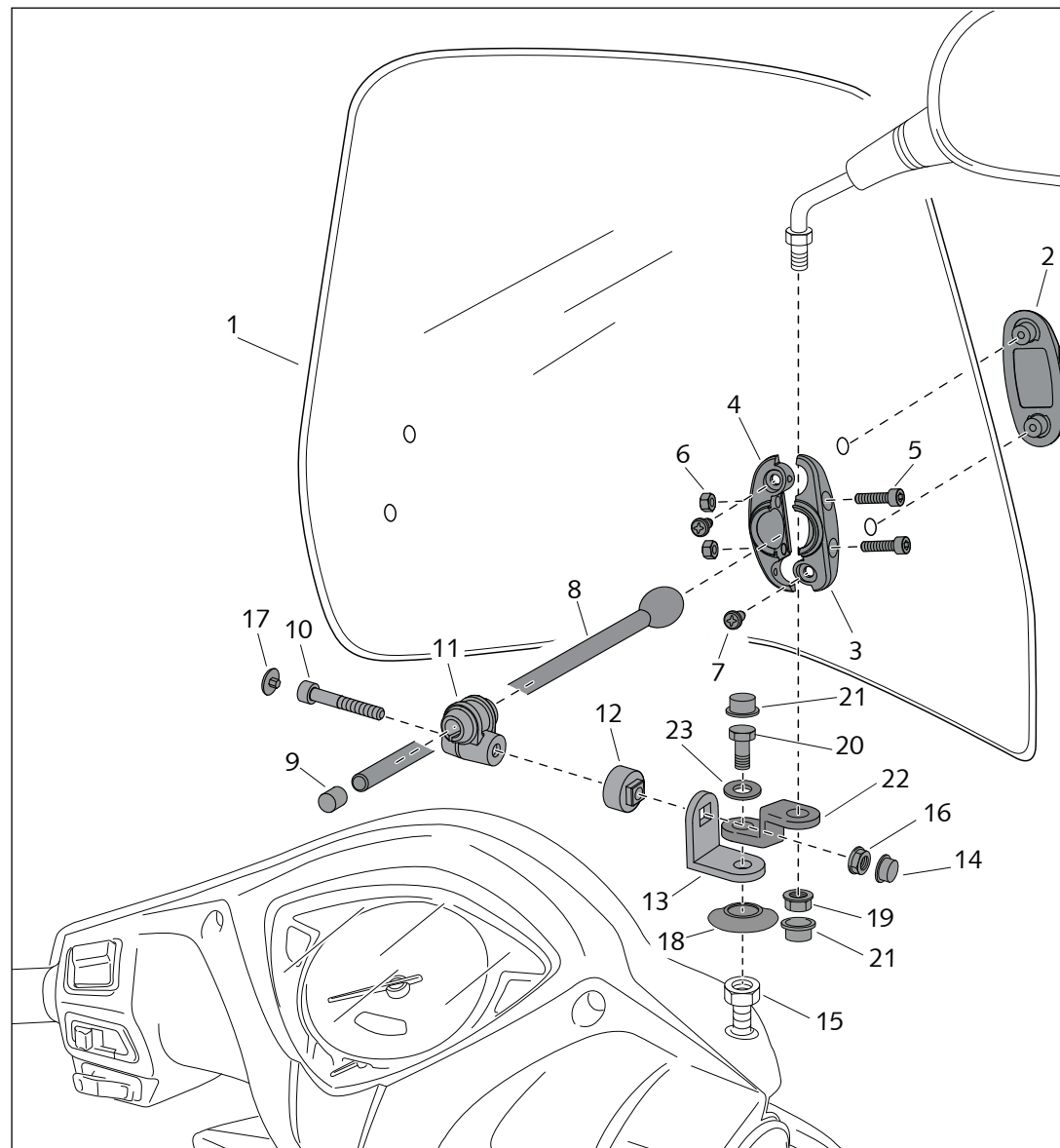
ID.	DESCRIPTION	QTY.
1	Windshield	1
2	Exterior cap	2
3	Ball bearing exterior support	2
4	Ball bearing interior support	2
5	M5x20 DIN912 allen screw	4
6	M5 DIN982 lock nut	4
7	M5x13 phillips screw	4
8	Straight rod Ø9x120	2
9	Final bar cap	2
10	M8x40 DIN912 screw	2
11	Rod guide support	2
12	Coupling angle	2
13	Ø8 Ø10 angle Ref.:582	2
14	M8 nut cover	2
15	Rearview extension (Original)	2
16	M8 DIN6923 nut	2
17	M8 DIN912 screw cap	2
18	Below drill cover	4
19	M10 DIN934 nut left thread	2
20	M10/125x20 screw	2
21	M10 flat nut cover	4
22	Ø10xØ10 rearview support	2
23	M10 flat washer	2

WINDSHIELD ADAPTABLE TO

## SUZUKI ADDRESS / GP

Mod.: TRAFIC  
Ref.: 7674

Mod.: URBAN  
Ref.: 8474



Buy quality motorcycle windshields & fairings in our online store.

Shop for quality Puig products on our website.