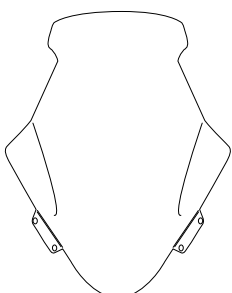

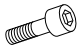


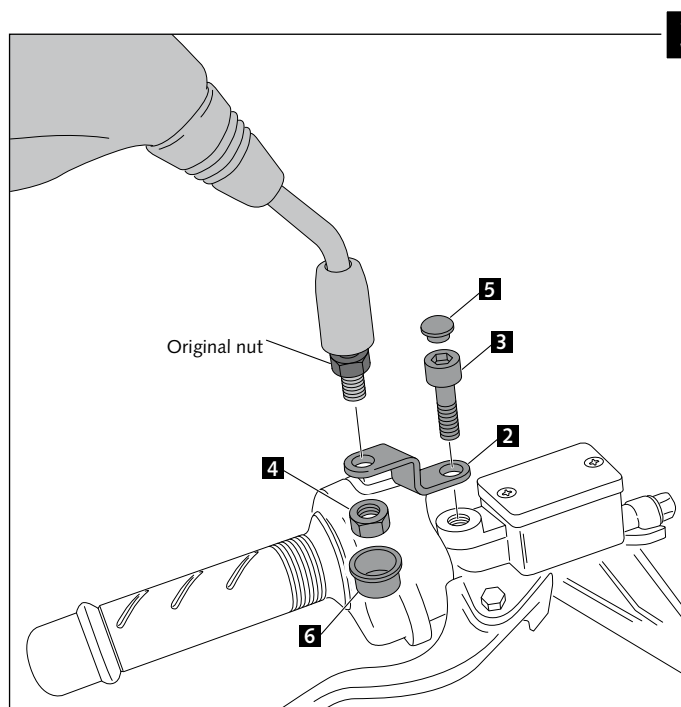
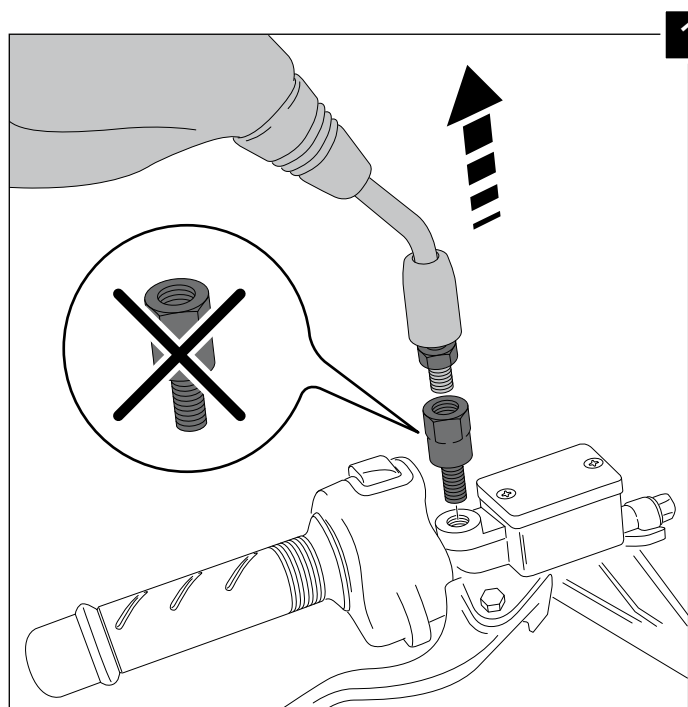


MOUNTING INSTRUCTIONS

VTECH TOURING FOR
HONDA PCX 125 '14-

ID.	PART	DESCRIPTION	QTY.
1		VTech Touring	1
2		Back mirror move set	2
3		M10x15 screw	2
4		M10 nut (left fastener)	2
5		Allen Screw cap	2
6		M10 nut cover	2



MOUNTING INSTRUCTIONS

VTECH TOURING FOR
HONDA PCX 125 '14-

