

INSTRUCTIONS TO ASSEMBLE

Remove the fasteners that subject the chassis to the engine, on the point marked below (and the opposite side). Mount the protectors on each own side as the figure below shows. Tight the set, and place the caps.

All the screws replaced, should be tightened to the torque specified in the oem maintenance manual for your motorcycle. if no torque specifications are provided in the oem maintenance manual, may be used 54Nm for all M10 screws.

Medium strength liquid thread-locker (i.e., "Loctite") should be used to secure all screws, bolts and nuts.

All screws, bolts and nuts should be checked after driving the first 50 km to ensure that all are tightened to the proper torque.

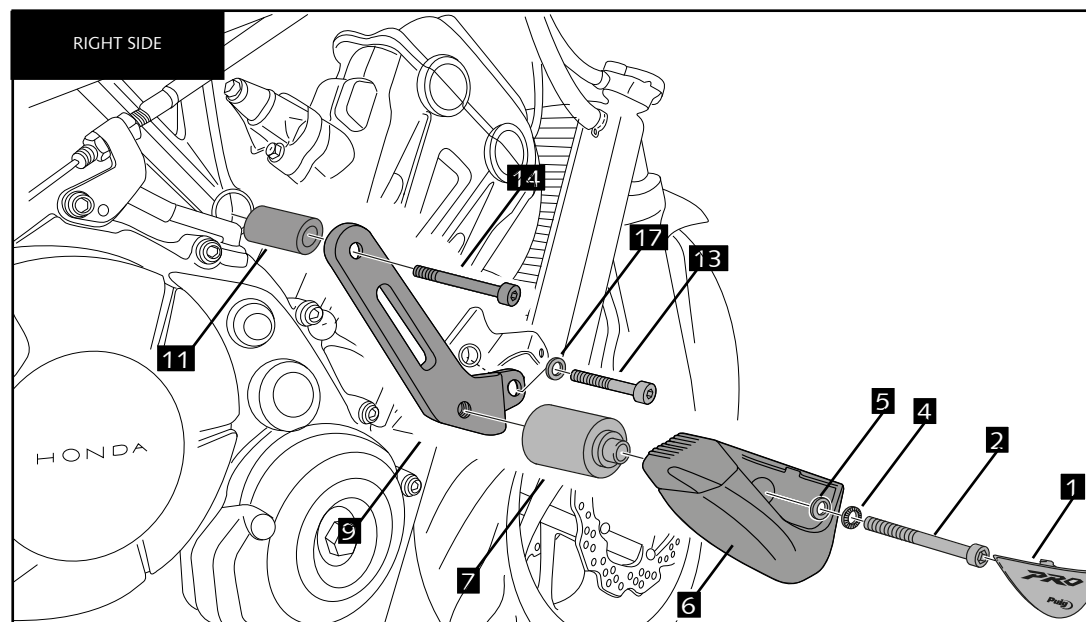
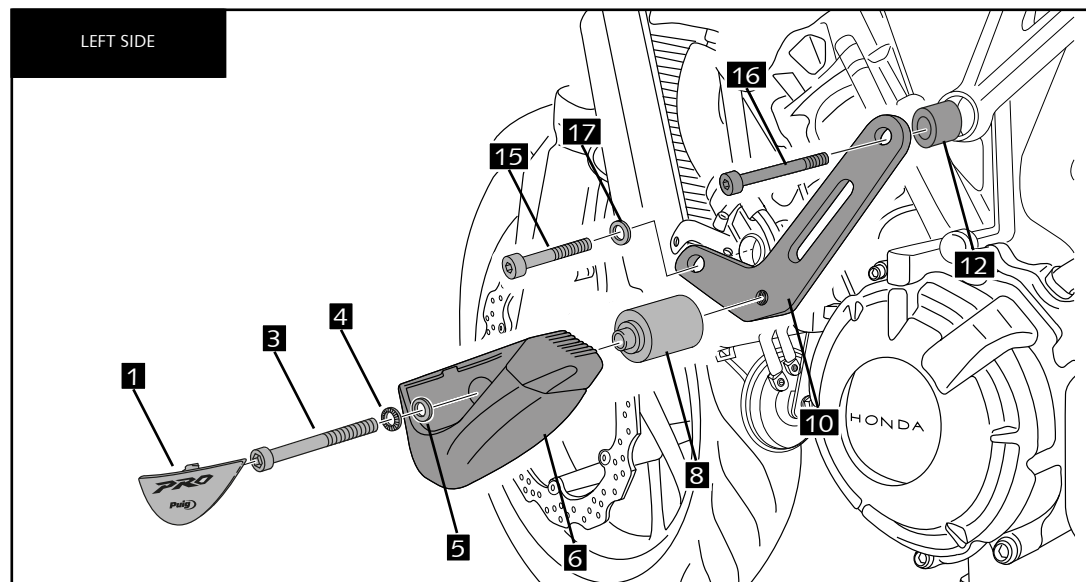
ID.	DESCRIPTION	QTY.
1	Caps set	2
2	M10/150 x60 DIN912 screw	1
3	M10/150 x90 DIN912 screw	1
4	M10 DIN6798/A washer	2
5	M10 DIN125/A washer	2
6	Nylon protector	2
7	Right hand aluminium metal arrowhead	1
8	Left hand aluminium metal arrowhead	1
9	Right offset	1
10	Left offset	1
11	Right hand metal arrowhead diam. 20x78	1
12	Left hand metal arrowhead diam. 20x32	1
13	M12/125 x50 DIN912 screw	1
14	M10/125 x120 DIN912 screw	1
15	M12/125 x80 DIN912 screw	1
16	M10/125 x70 DIN912 screw	1
17	Washer M12 DIN433	2

FOR TO ASSEMBLE THE CRASH PADS, IF YOU ARE NOT A TRAINED MECHANIC, PLEASE CONTACT A SPECIALIST. MOTOPLASTIC, S.A. TAKES NO RESPONSIBILITY FOR DAMAGES CAUSED BY IMPROPER INSTALLATION.
THE USE OF CRASH PADS DO NOT GUARANTEE A FULL PROTECTION IN CASE OF ACCIDENT.
MOTOPLASTIC-PUIG DECLINE ANY RESPONSIBILITY IN CASE OF MOTORCYCLE DAMAGE.

MOUNTING INSTRUCTIONS

CRASH PADS FOR HONDA CB650F 14'-

Ref.: 7070N



Discover other motorcycle guards and protection on our website.