

## BMW S1000R

Ref.: 7040

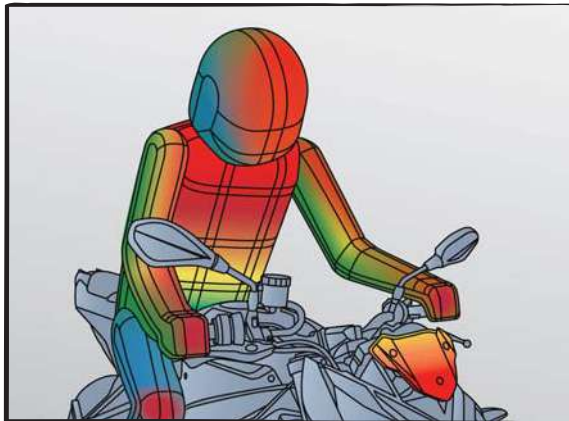
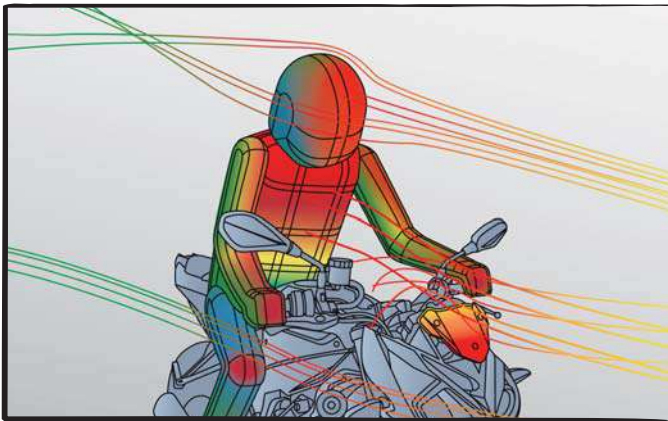
### TEST CONDITIONS

SPEED	150 km/h	93 mph
RIDER HEIGHT	1.8 m	5.9 ft
RIDER POSITION	Standard	

LATERAL WIND	No	
TEMPERATURE	20°C	68°F

MAX. PRESSURE

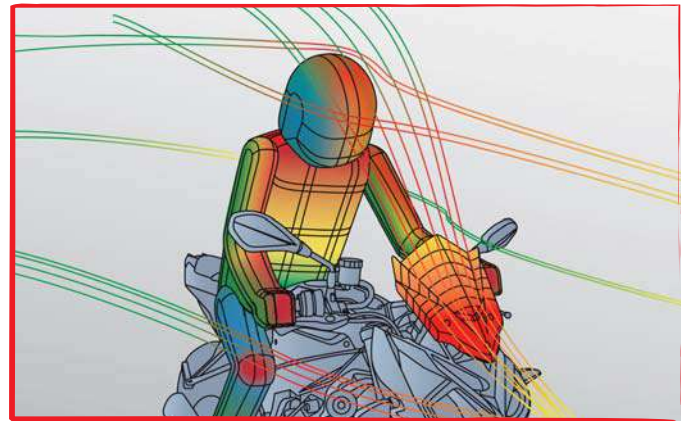
### ORIGINAL SCREEN



### FINAL RESULTS

HELMET AVERAGE PRESSURE	15 kg/cm <sup>2</sup>
BODY AVERAGE PRESSURE	17,9 kg/cm <sup>2</sup>

### PUIG SCREEN



MIN. PRESSURE

### FINAL RESULTS

HELMET AVERAGE PRESSURE	13,3 kg/cm <sup>2</sup>
BODY AVERAGE PRESSURE	11,1 kg/cm <sup>2</sup>

**+24,7%**

**IMPROVED AERODYNAMIC WIND PROTECTION WITH PUIG SCREEN**

**Without losing Cx**

# Naked Screen



# BMW S1000R 14-

◀◀◀ Max. protection +170mm (7.1 inches) ▶▶▶



Ref. 7040N

Ref. 7040R

ORIGINAL - OEM

Learn more about motorcycle windshields and fairings we have.