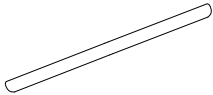
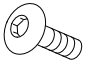

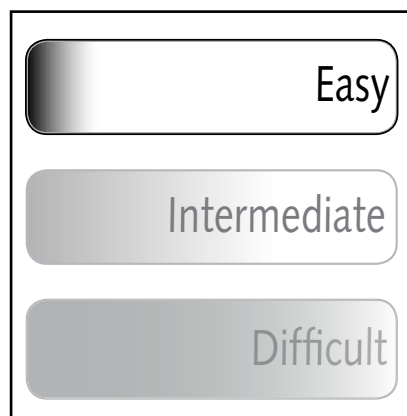
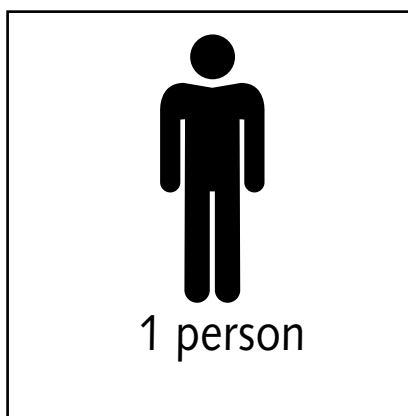
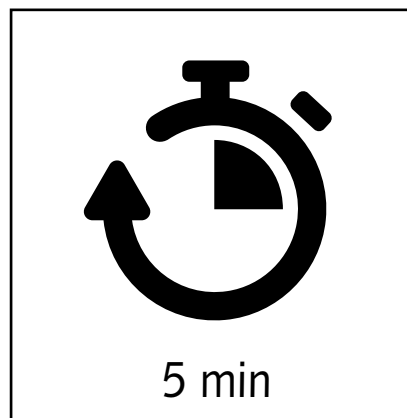
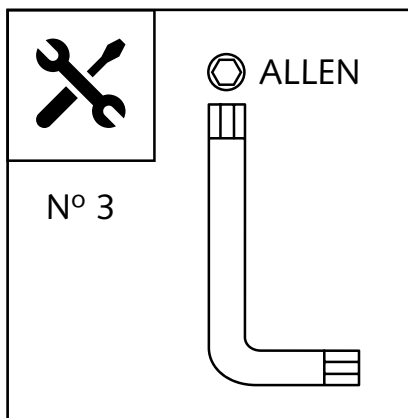


WINDSCREEN WITH STICK TO HOLD WIDTH

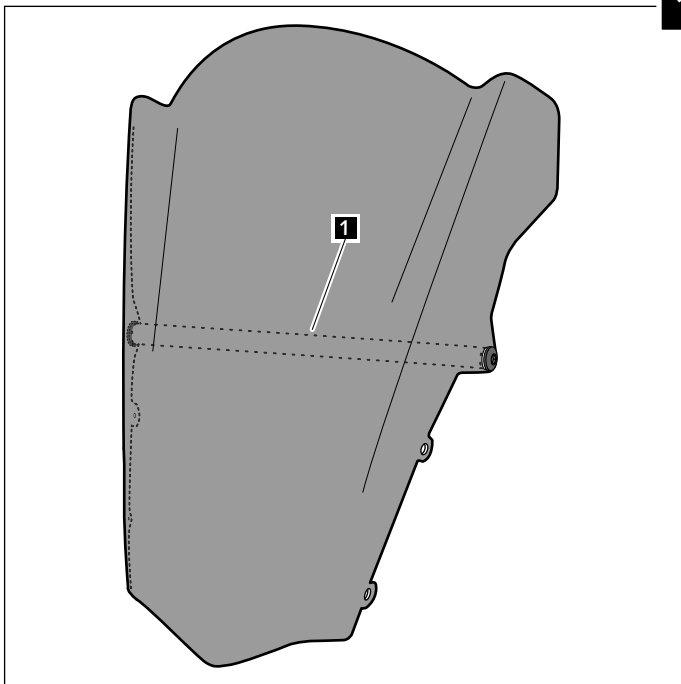
ID.	PART	DESCRIPTION	QTY.
1		Plastic stick to hold shape in order to maintain original width of the windscreen	1
2		M5x16 DIN9380 screw	2
3		M5x0,5 plastic washer	2



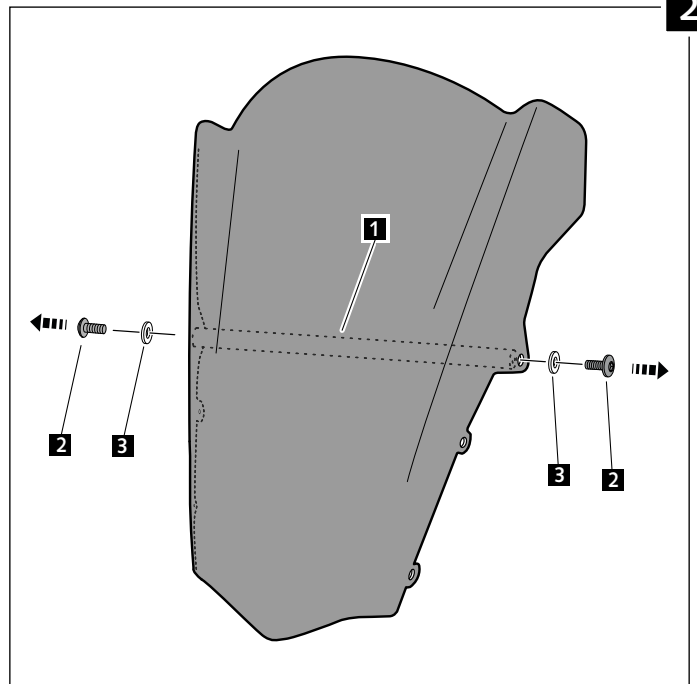


MOUNTING INSTRUCTIONS

1

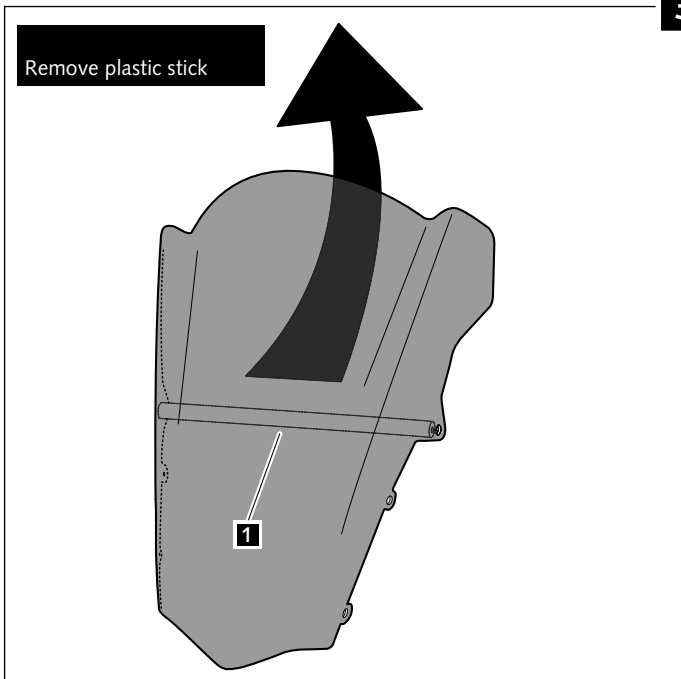


2



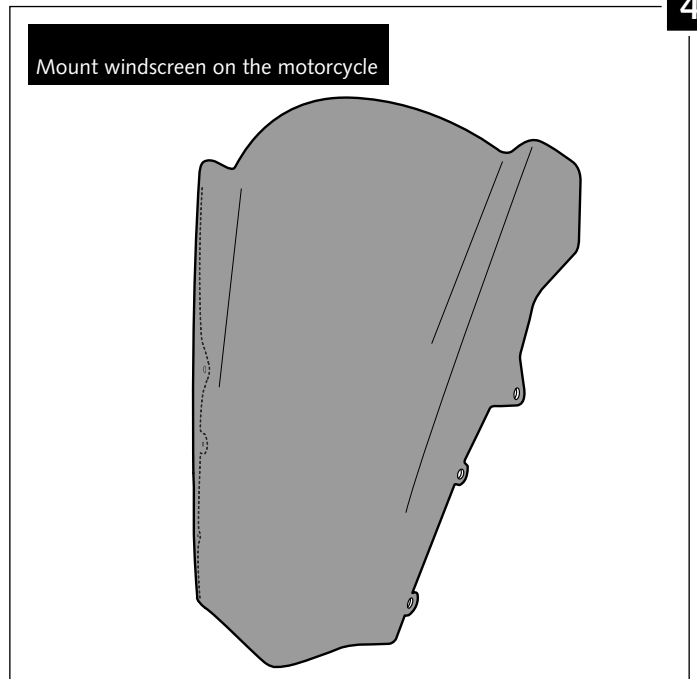
3

Remove plastic stick



4

Mount windscreen on the motorcycle



MULTI-ADJUSTABLE VISOR



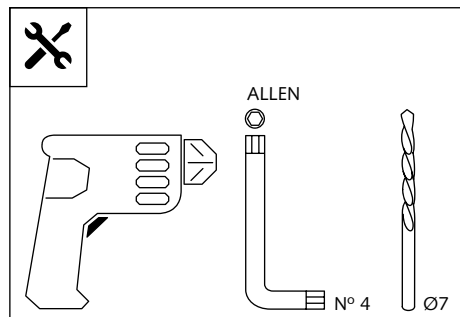
Ref.: 6007

Ref.: 5852

Ref.: 5853

Smoke

Clear



1 person



15 min

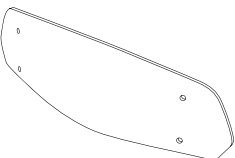




Easy

Intermediate

Difficult

Note:

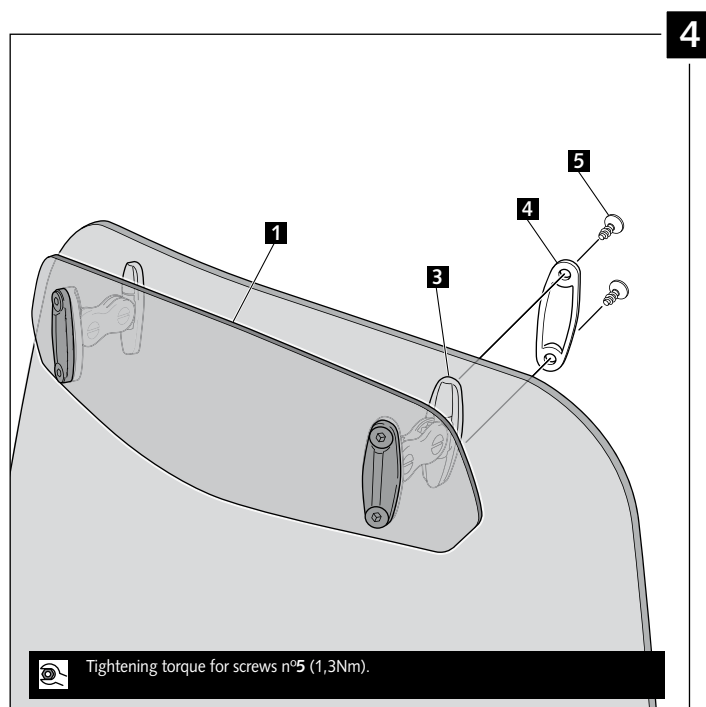
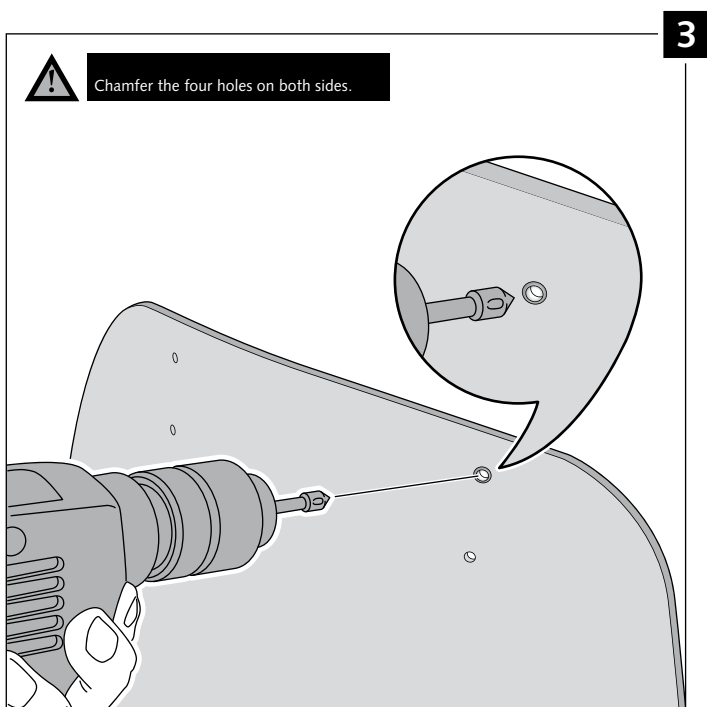
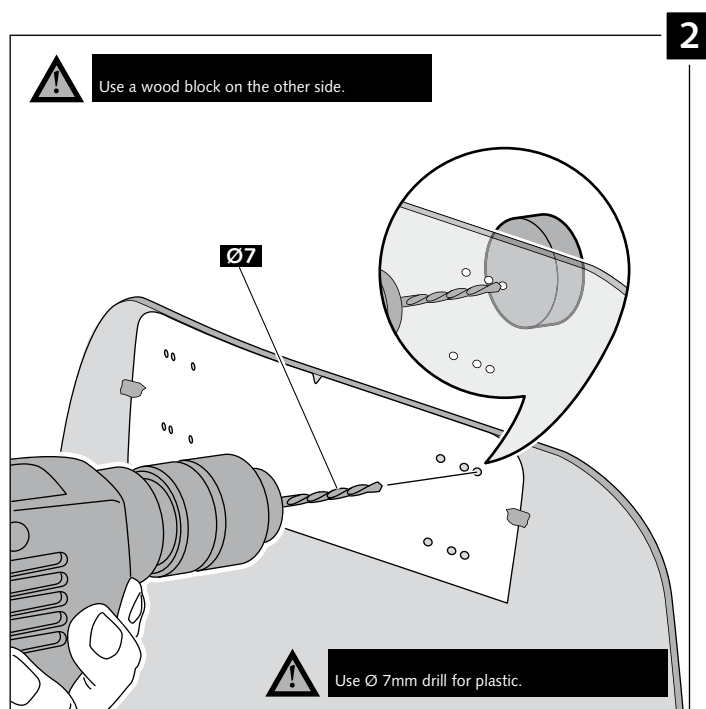
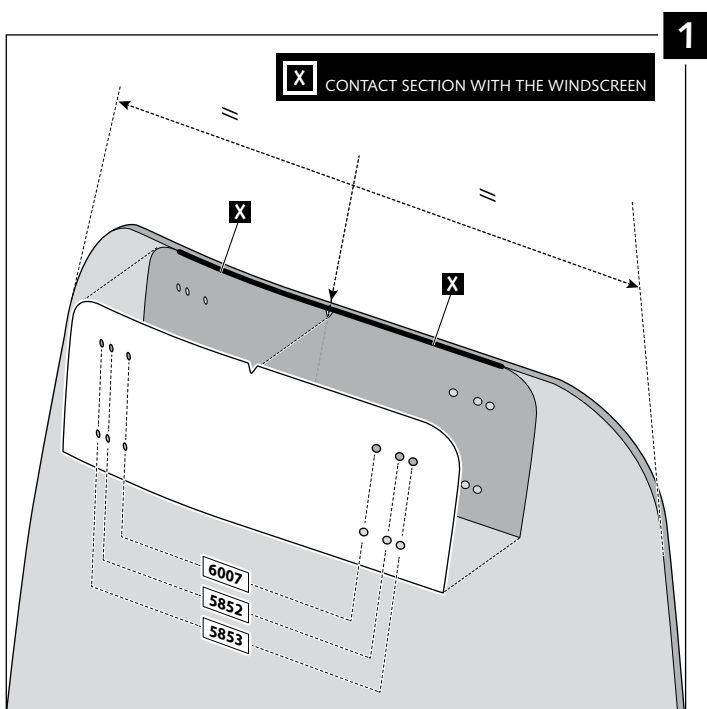
If the visor is supplied along with the windscreen, the windscreen will come factory-drilled so no drilling is necessary.

ID.	PART	DESCRIPTION	QTY.
1		Visor	1
2		Template	1
3		Multi-adjustable mechanism	2
4		Cap	4
5		Plastic thread fastener M6x12	8

MULTI-ADJUSTABLE VISOR

MOUNTING INSTRUCTIONS

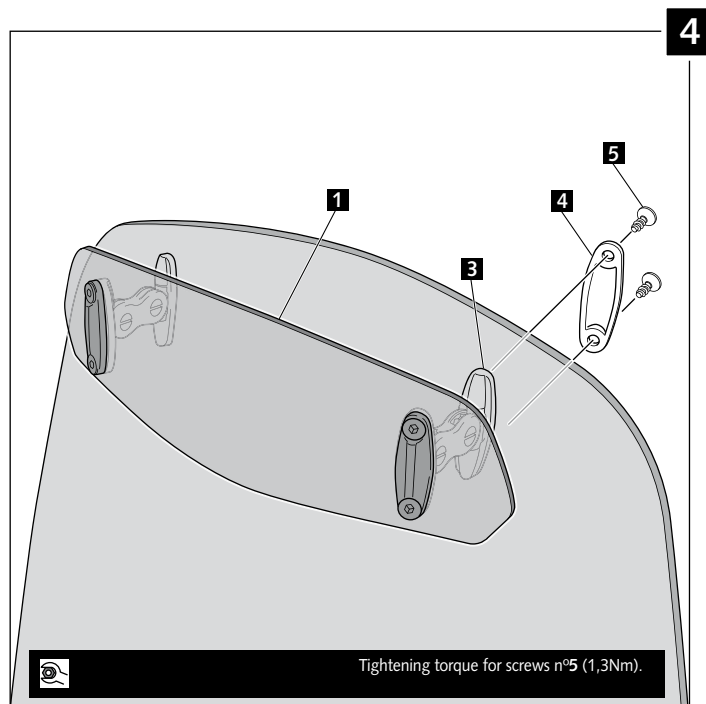
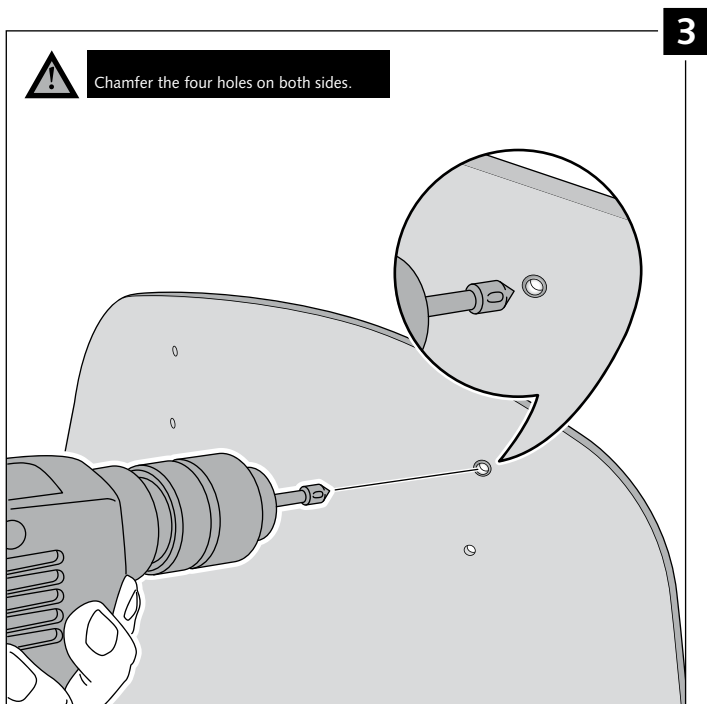
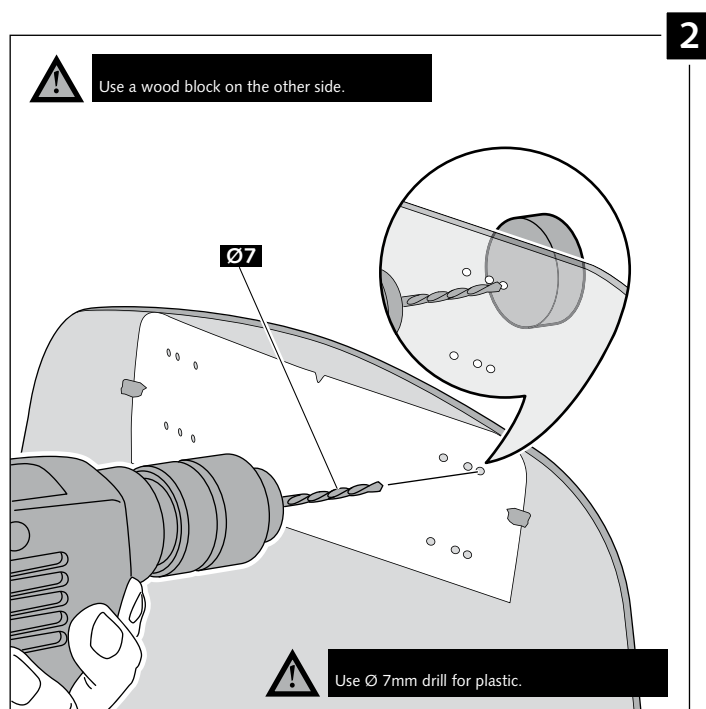
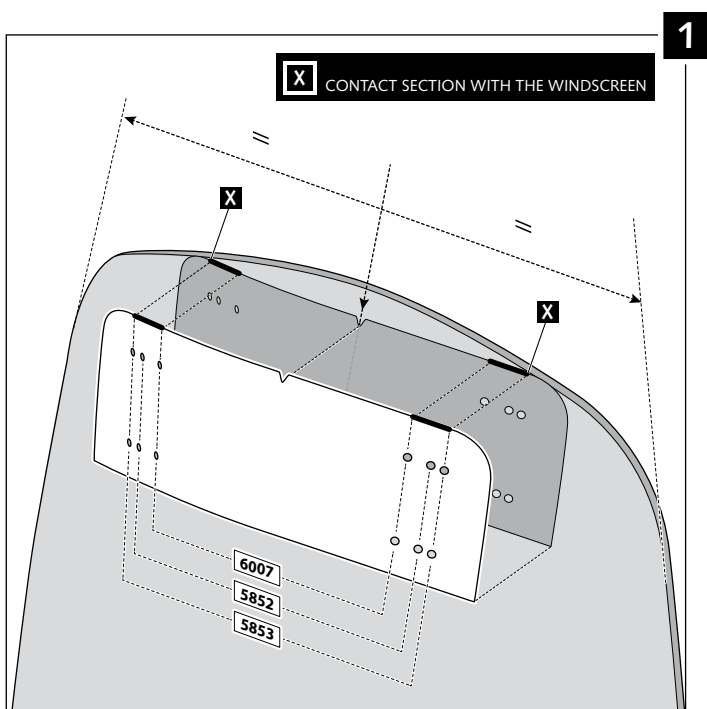
TYPE A



MULTI-ADJUSTABLE VISOR

MOUNTING INSTRUCTIONS

TYPE B





TYPE C

