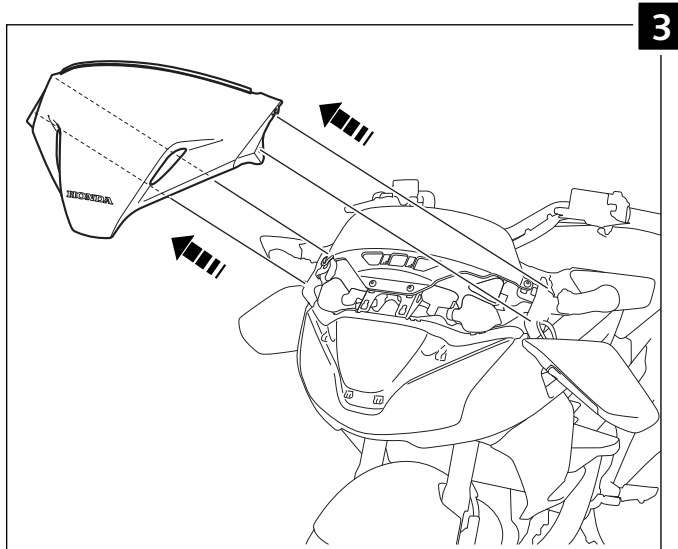
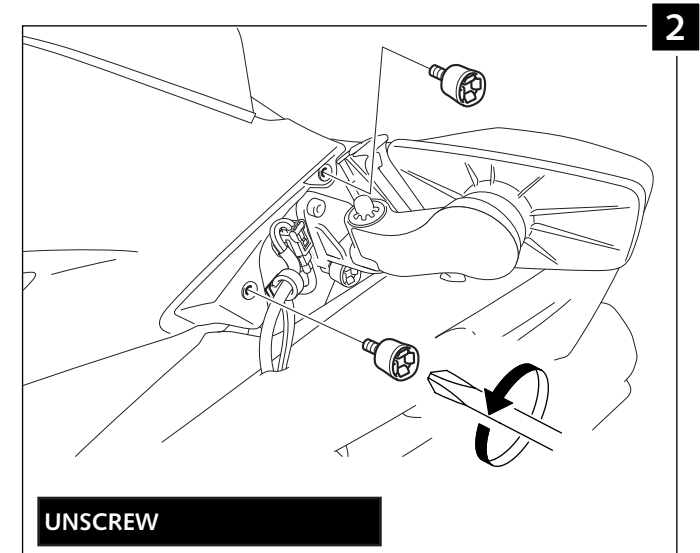
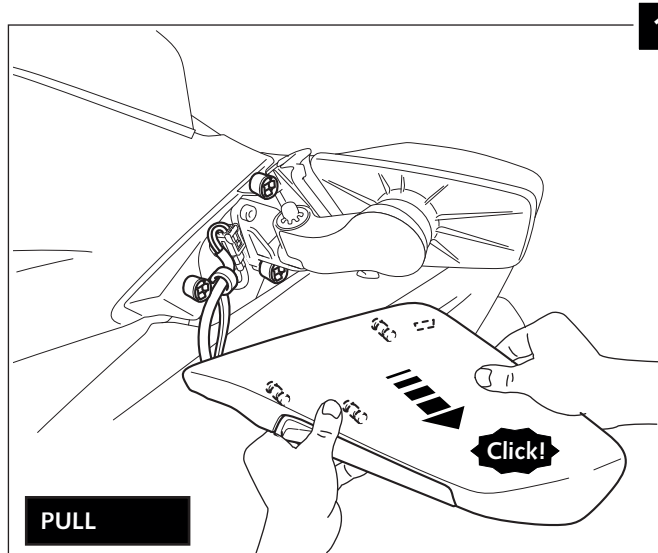







MOUNTING INSTRUCTIONS

TOURING SCREEN FOR
HONDA CTX 1300

Ref.: 7005



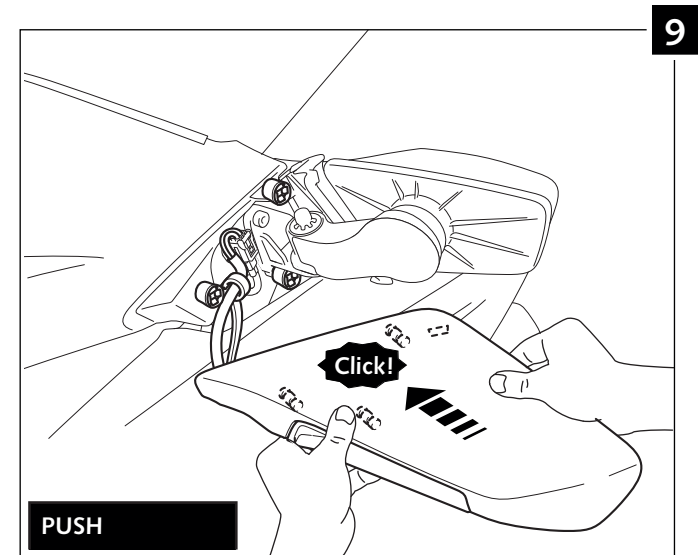
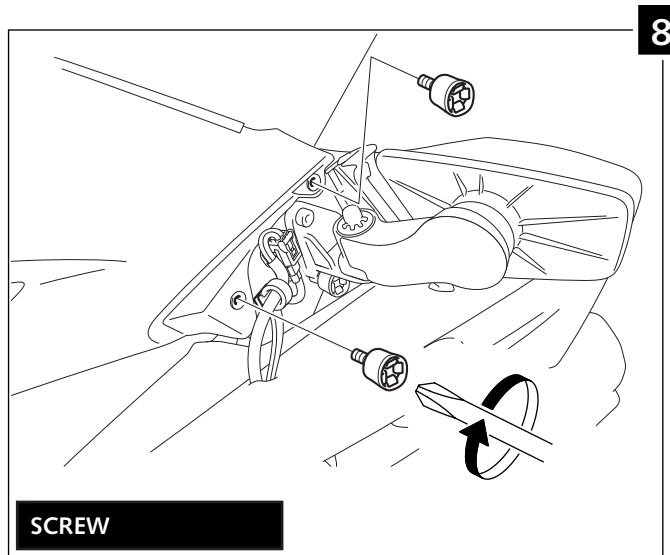
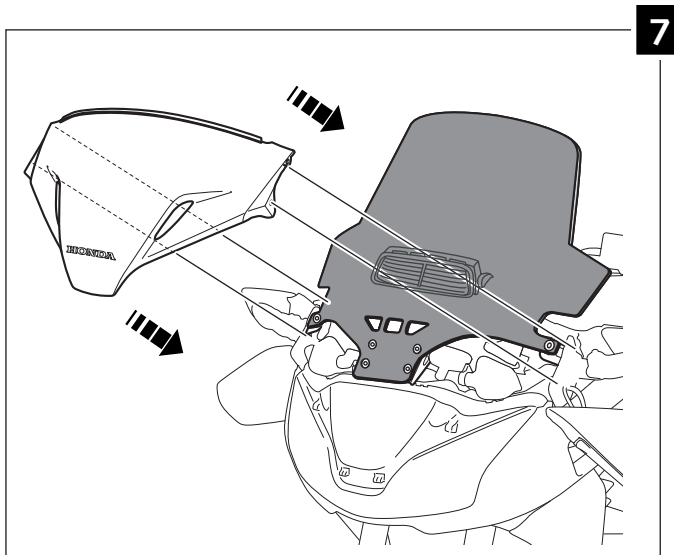
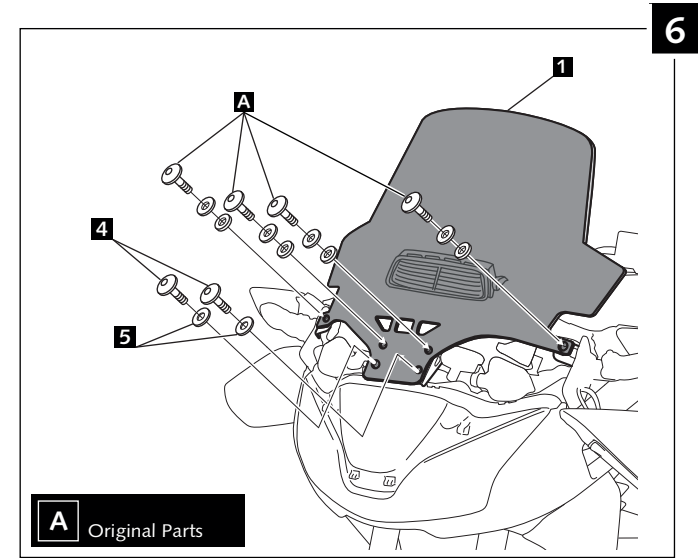
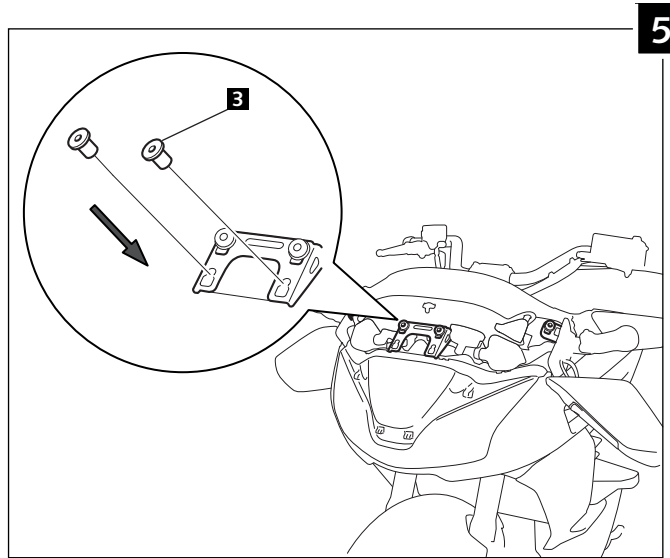
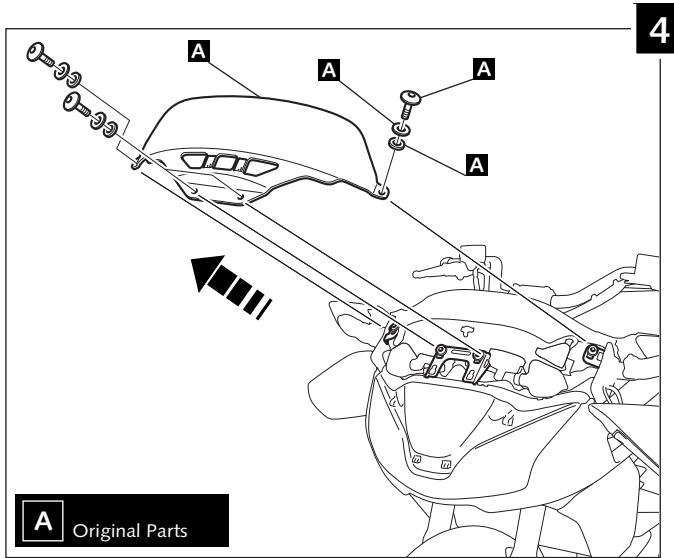
ID.		DESCRIPTION	QTY.
1		Screen	1
2		Visor Vent (supplied mounted in piece n°1)	1
3		M5 Silentblock	2
4		M5X16 ISO 7380 Allen Screw	2
5		M5x0,5 Nylon Washer	2

MOUNTING INSTRUCTIONS

TOURING SCREEN FOR

HONDA CTX 1300

Ref.: 7005



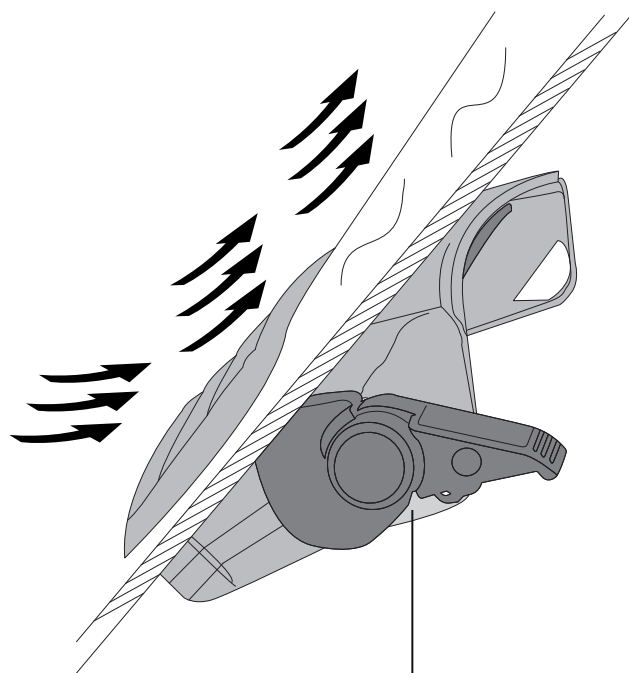
MOUNTING INSTRUCTION

TOURING SCREEN FOR

HONDA CTX 1300

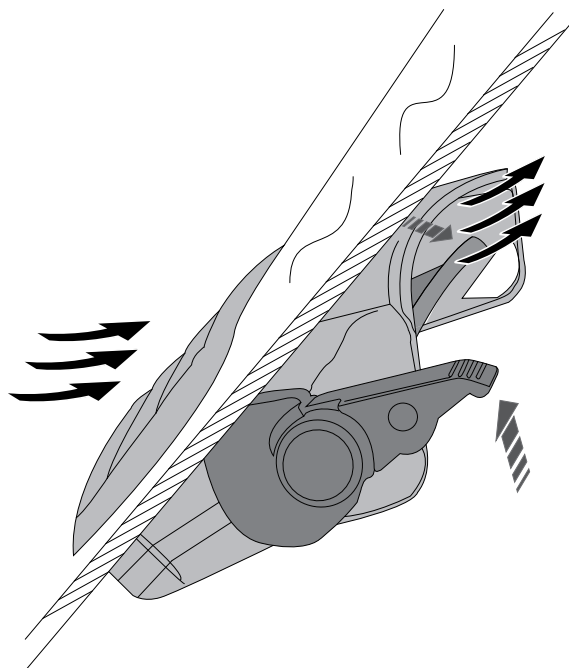
Ref.: 7005

Airflow closed

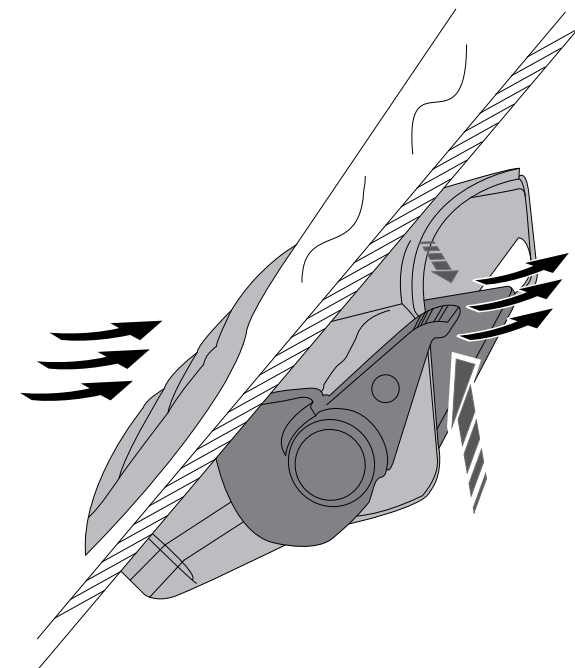


Visor vent

Visor half opened



Air flowing



MULTI-ADJUSTABLE VISOR



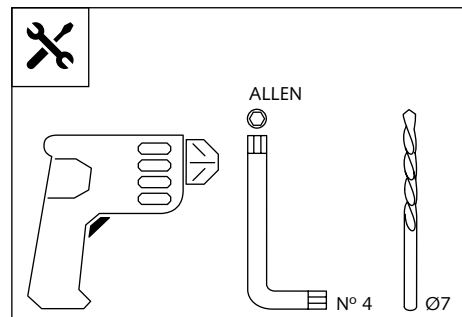
Ref.: 6007

Ref.: 5852

Ref.: 5853

Smoke

Clear



1 person



15 min

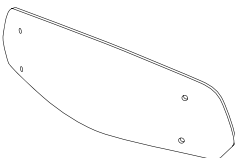




Easy

Intermediate

Difficult

Note:

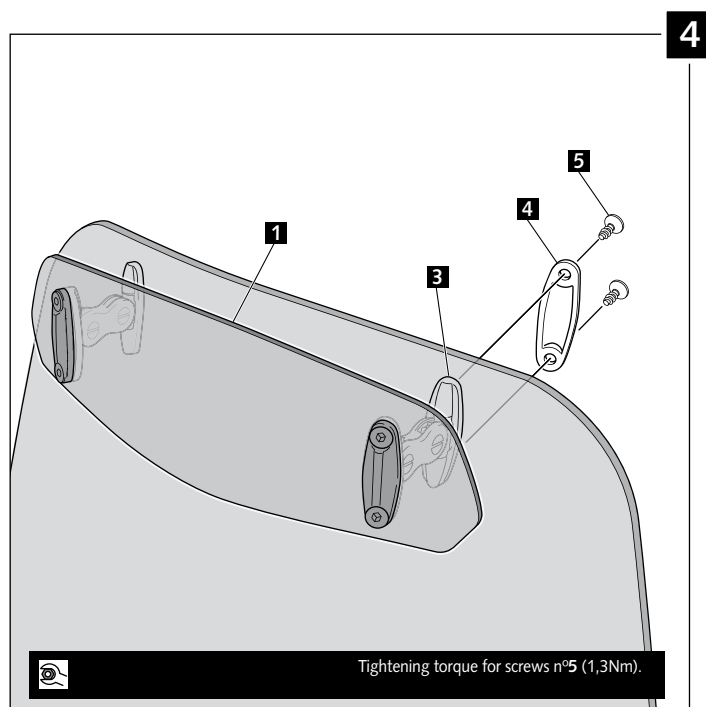
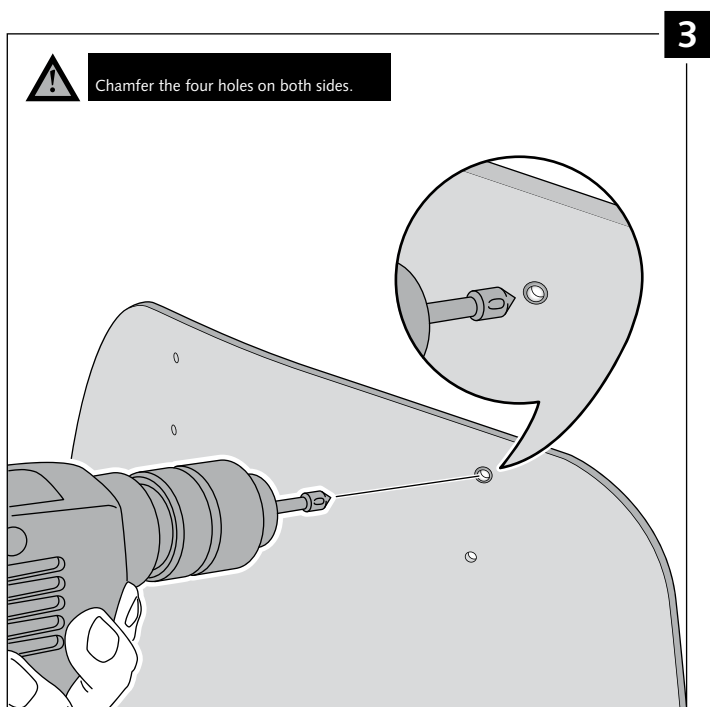
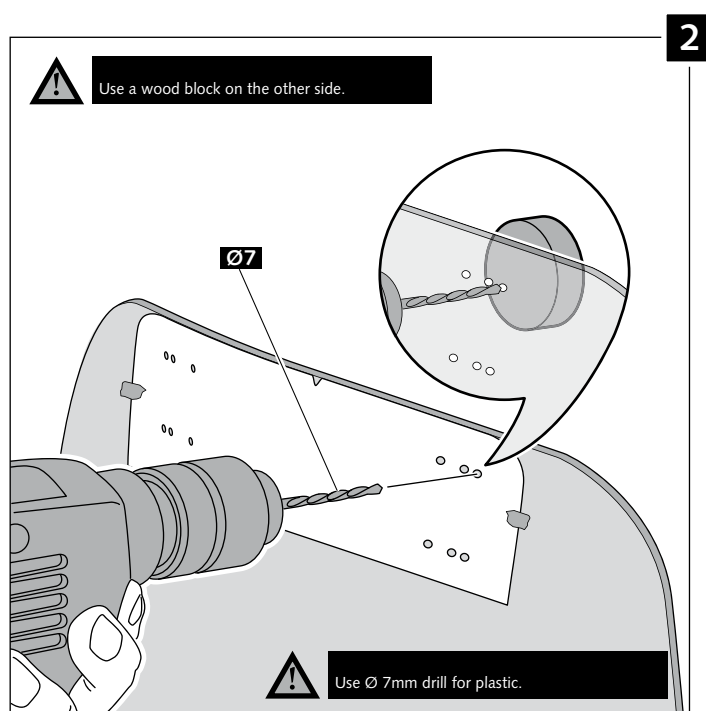
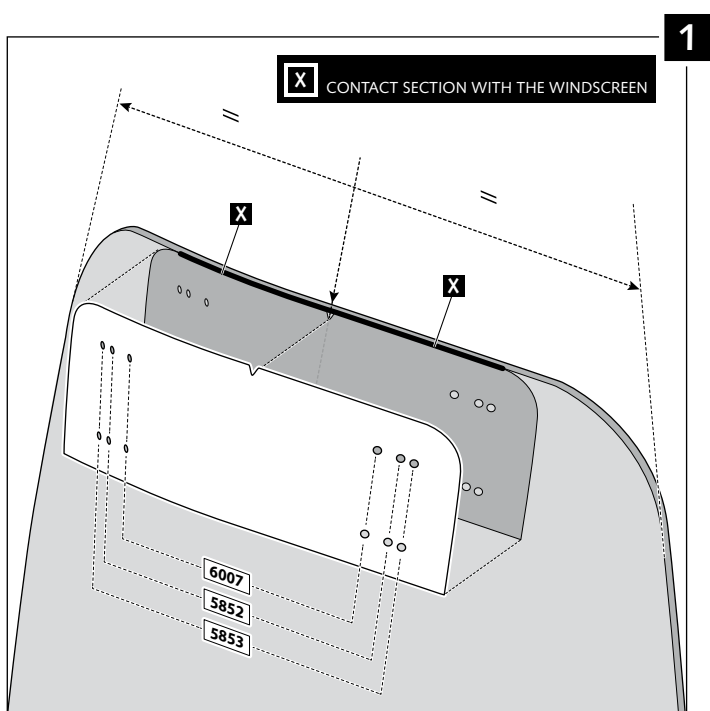
If the visor is supplied along with the windscreen, the windscreen will come factory-drilled so no drilling is necessary.

ID.	PART	DESCRIPTION	QTY.
1		Visor	1
2		Template	1
3		Multi-adjustable mechanism	2
4		Cap	4
5		Plastic thread fastener M6x12	8

MULTI-ADJUSTABLE VISOR

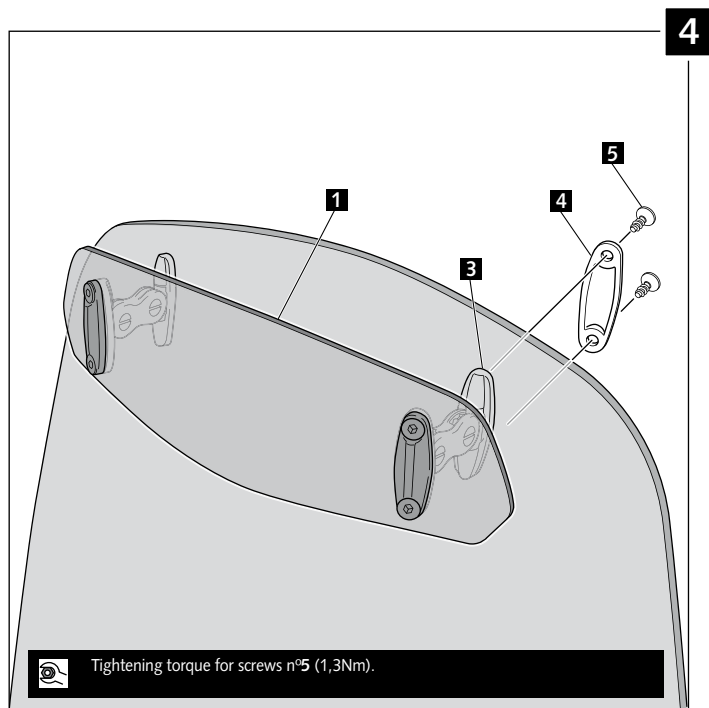
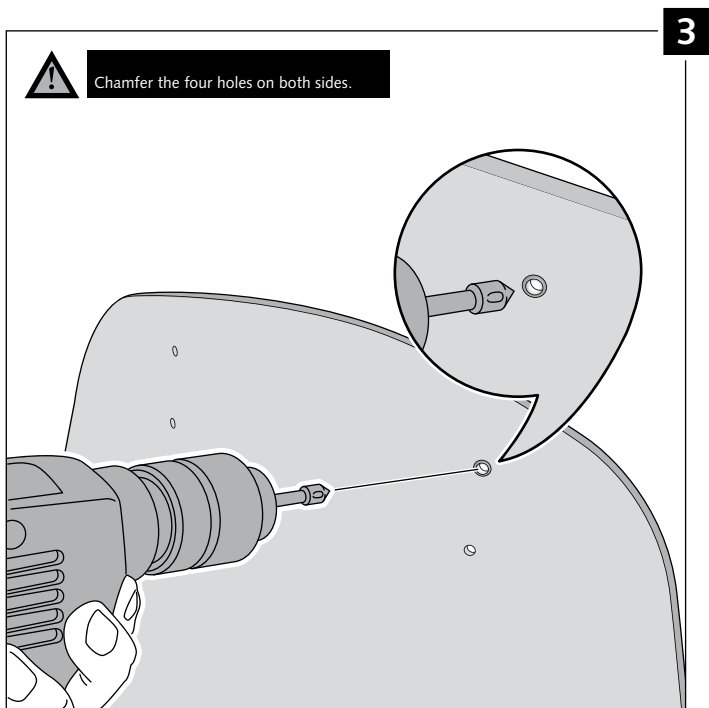
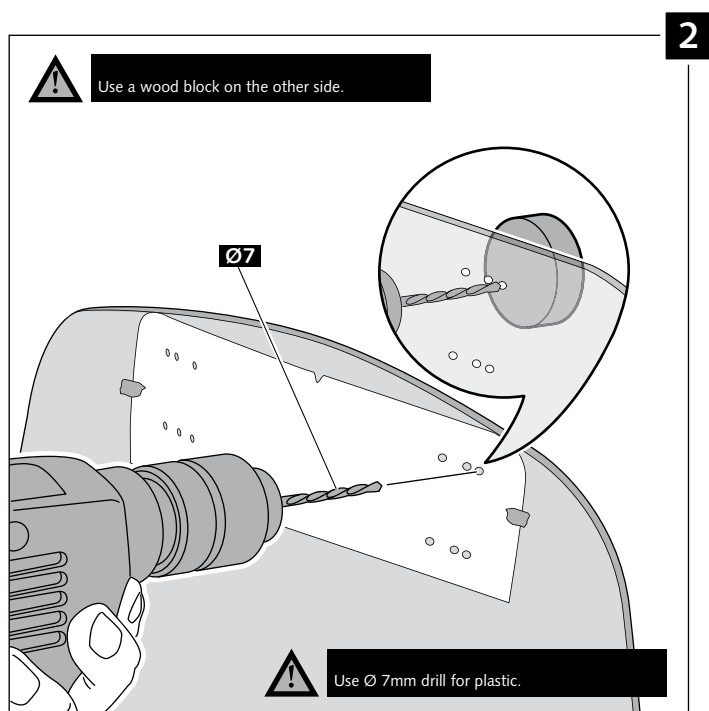
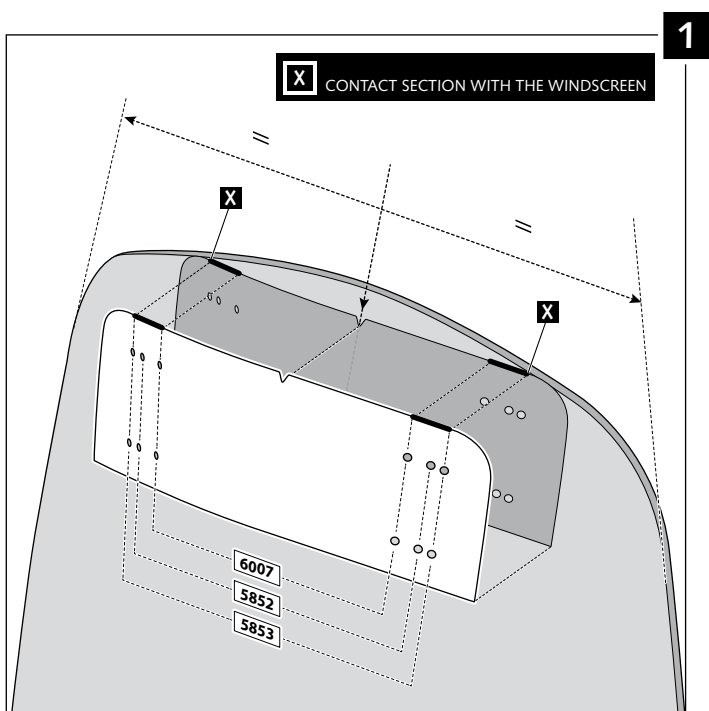
MOUNTING INSTRUCTIONS

TYPE A





TYPE B





TYPE C

