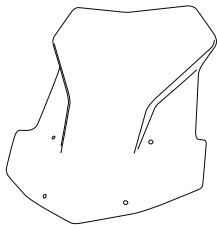


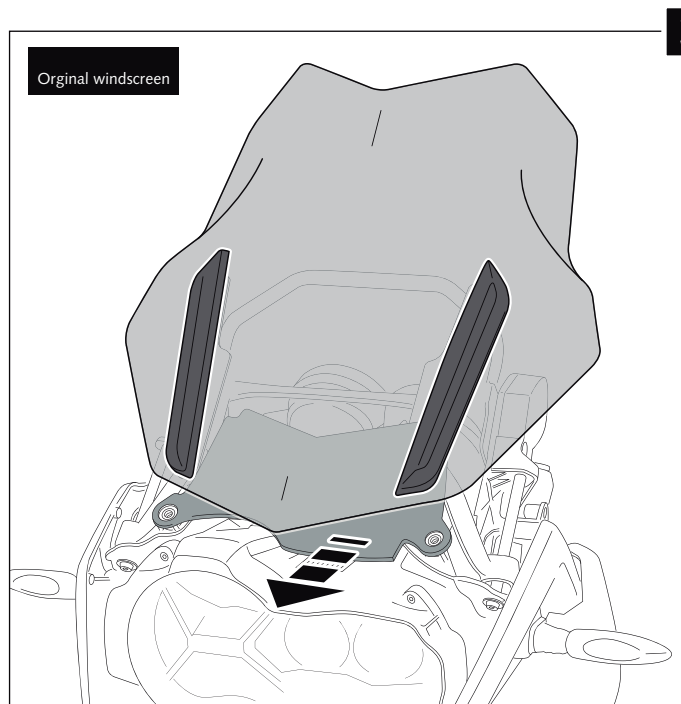
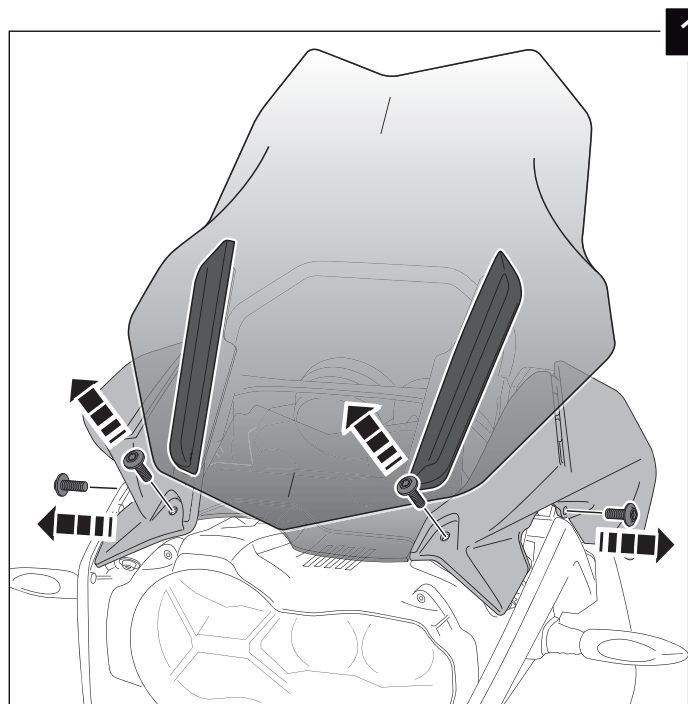
MOUNTING INSTRUCTIONS

WINDSCREEN FOR  
**BMW R1200GS LC / R1200GS LC ADV**  
**R1250GS / R1250GS ADV**

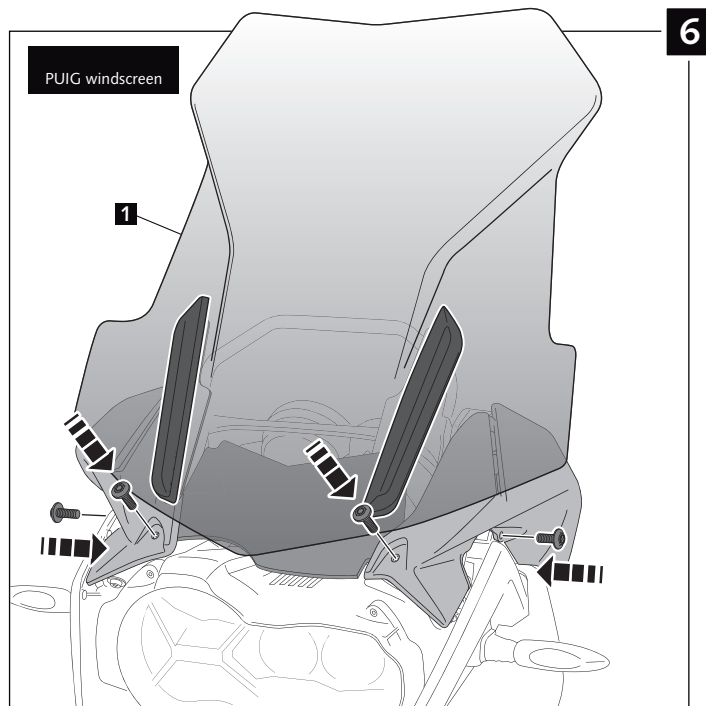
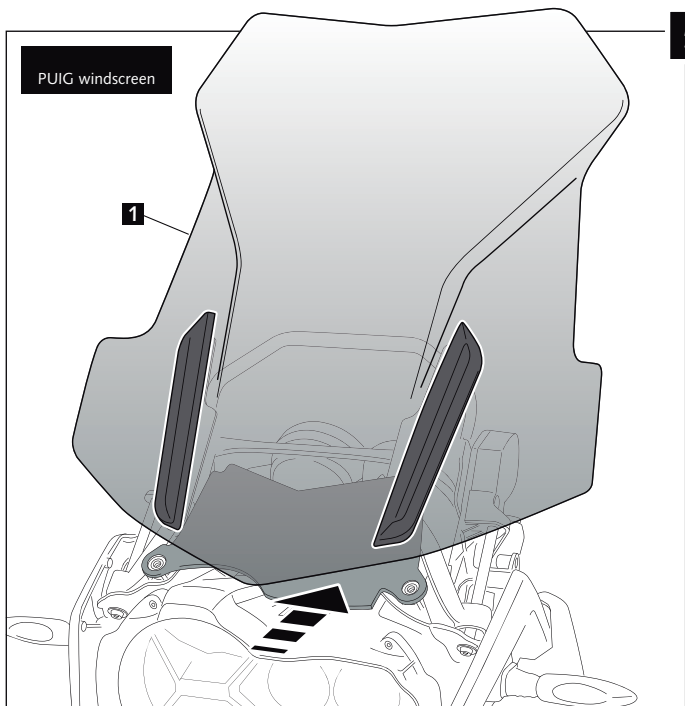
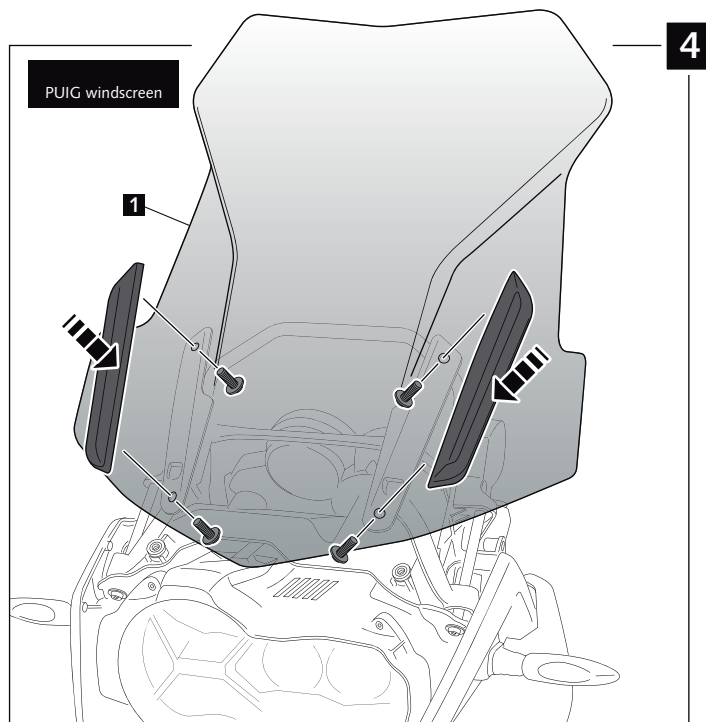
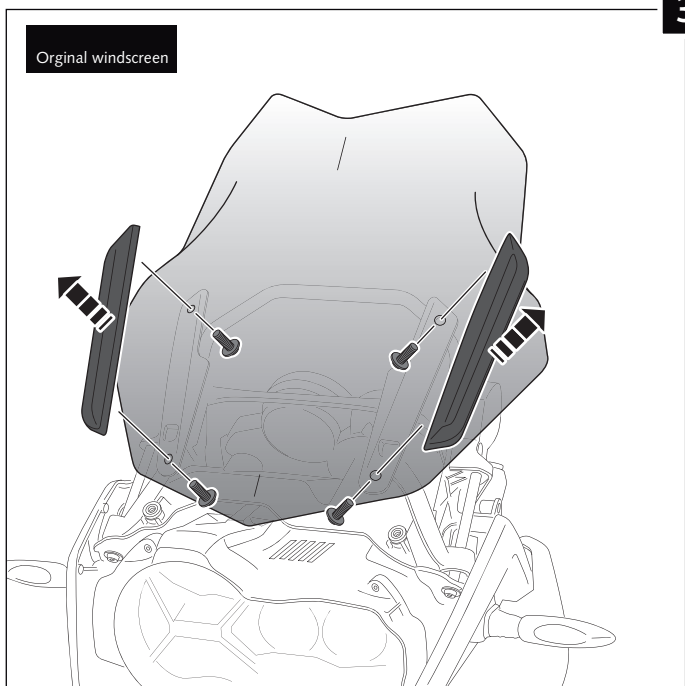


**NOTE:** We recommend not to exceed 140Km/h with the Puig Touring Windscreen.  
For higher speeds Puig recommends installing the screen reinforcement kit ref.: 7566N.

ID.	PART	DESCRIPTION	QTY.
1		Windscreen	1



**BMW R1200GS LC / R1200GS LC ADV  
R1250GS / R1250GS ADV**



## MULTI-ADJUSTABLE VISOR



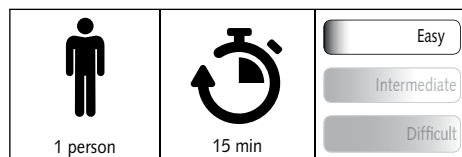
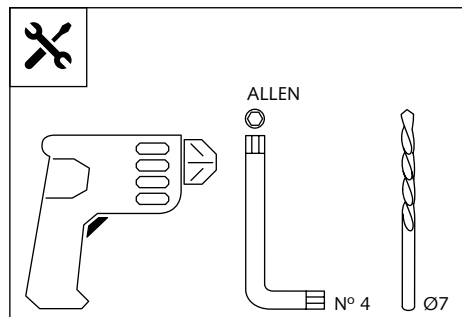
Ref.: 6007

Ref.: 5852

Ref.: 5853

Smoke

Clear



Note:

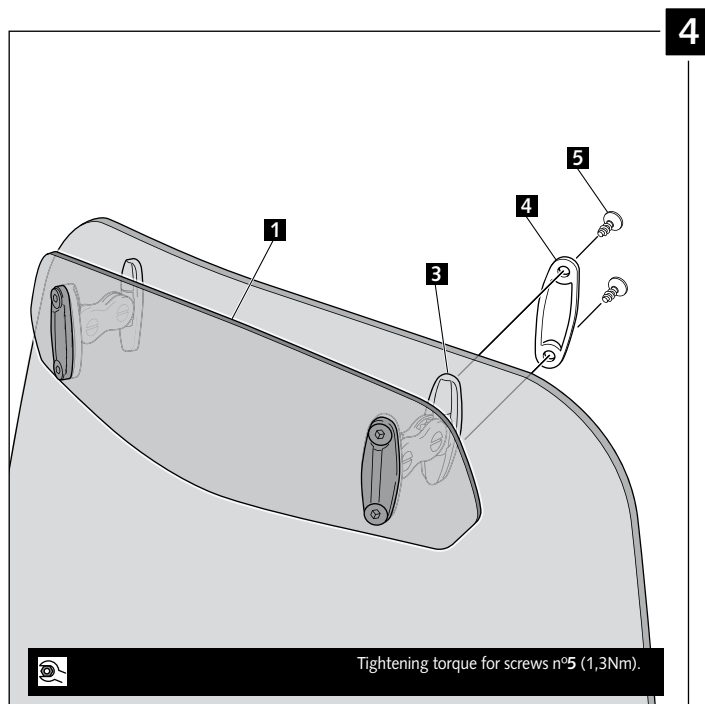
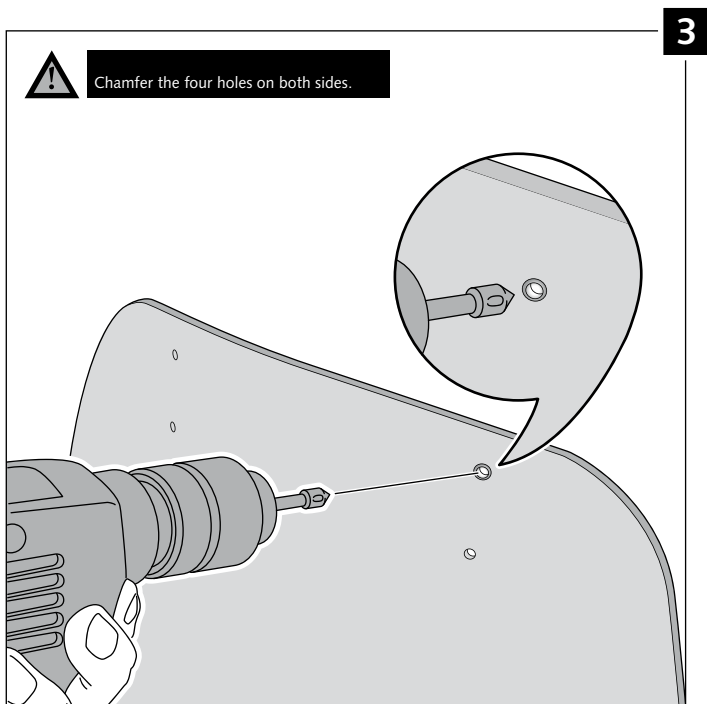
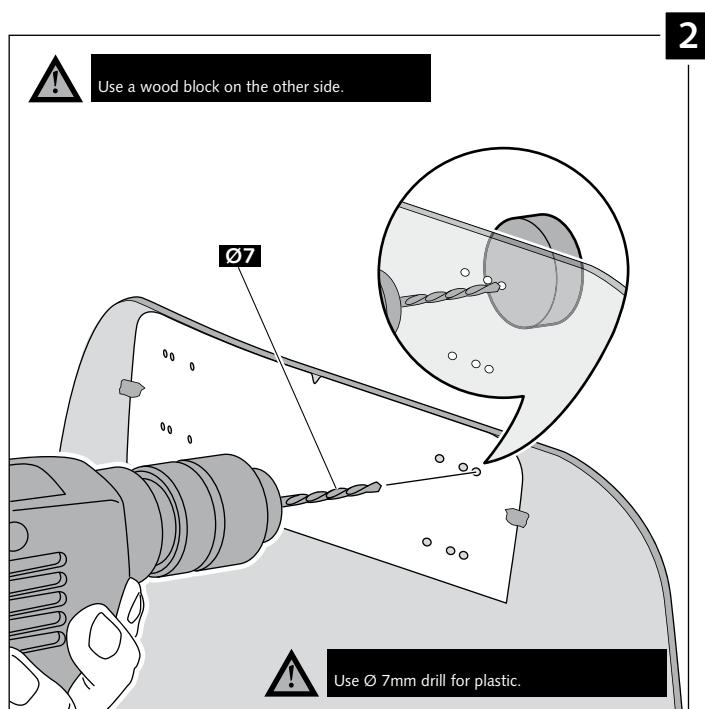
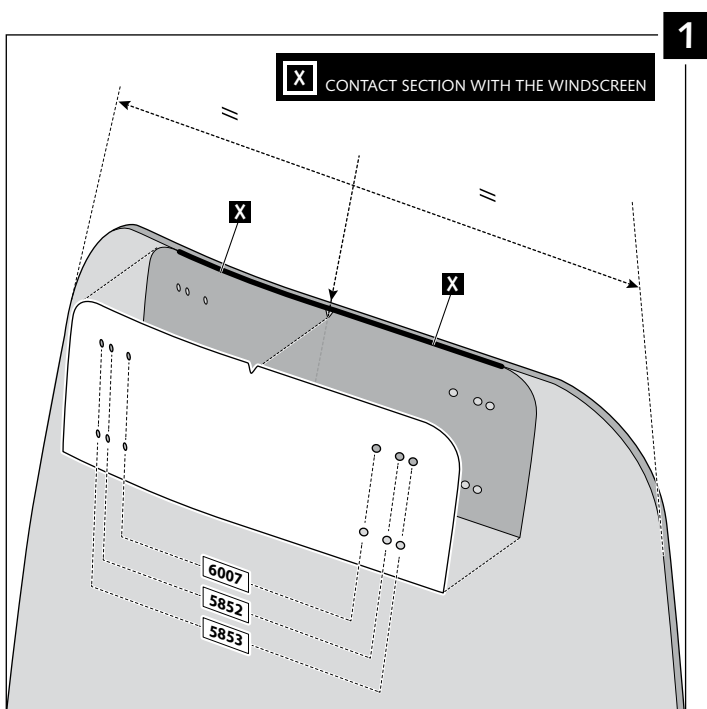
If the visor is supplied along with the windscreen, the windscreen will come factory-drilled so no drilling is necessary.

ID.	PART	DESCRIPTION	QTY.
1		Visor	1
2		Template	1
3		Multi-adjustable mechanism	2
4		Cap	4
5		Plastic thread fastener M6x12	8

## MULTI-ADJUSTABLE VISOR

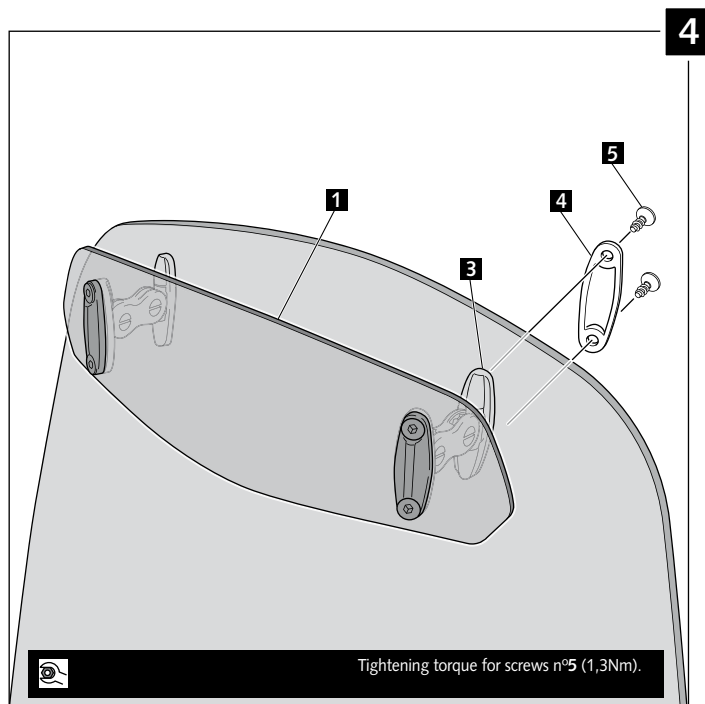
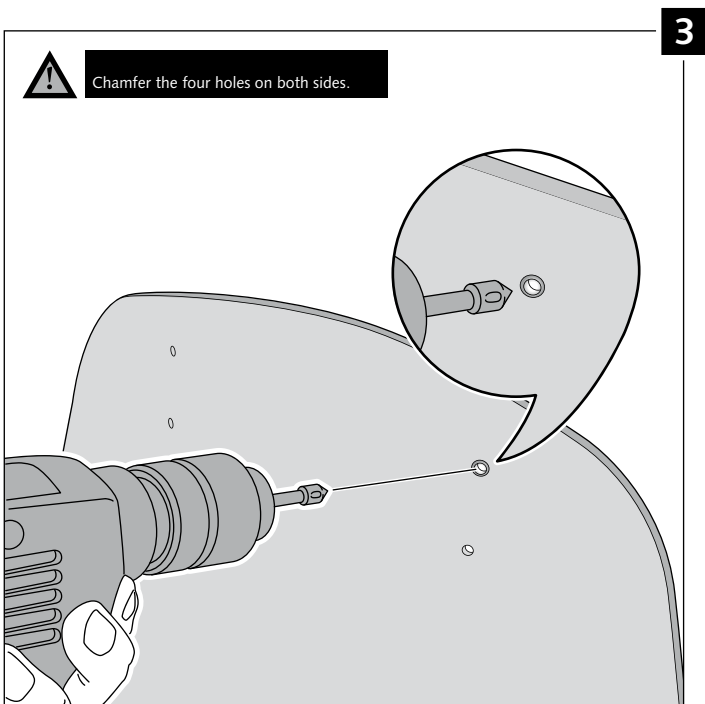
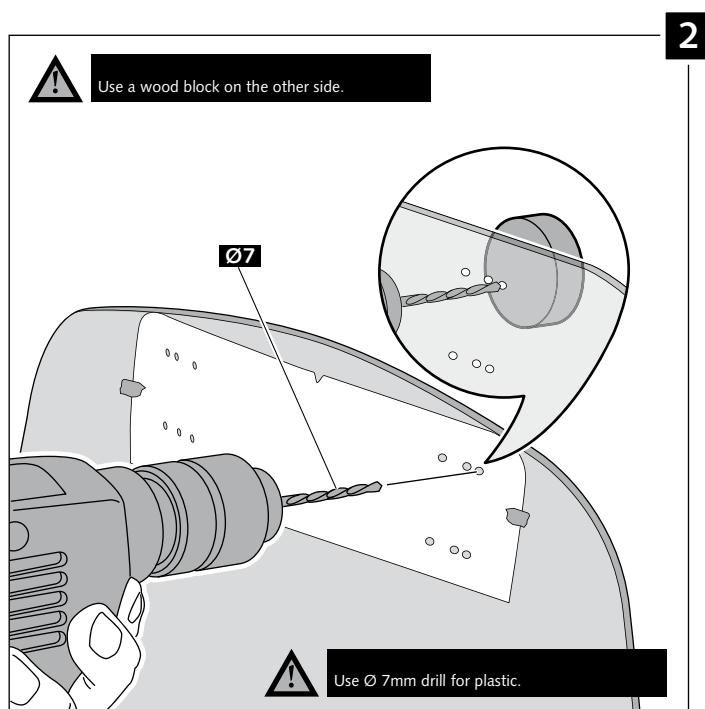
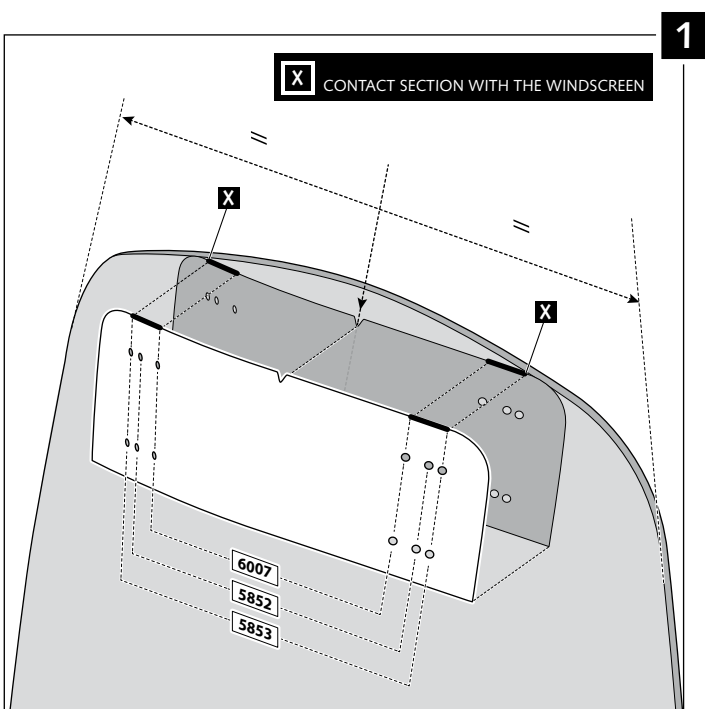
### MOUNTING INSTRUCTIONS

#### TYPE A



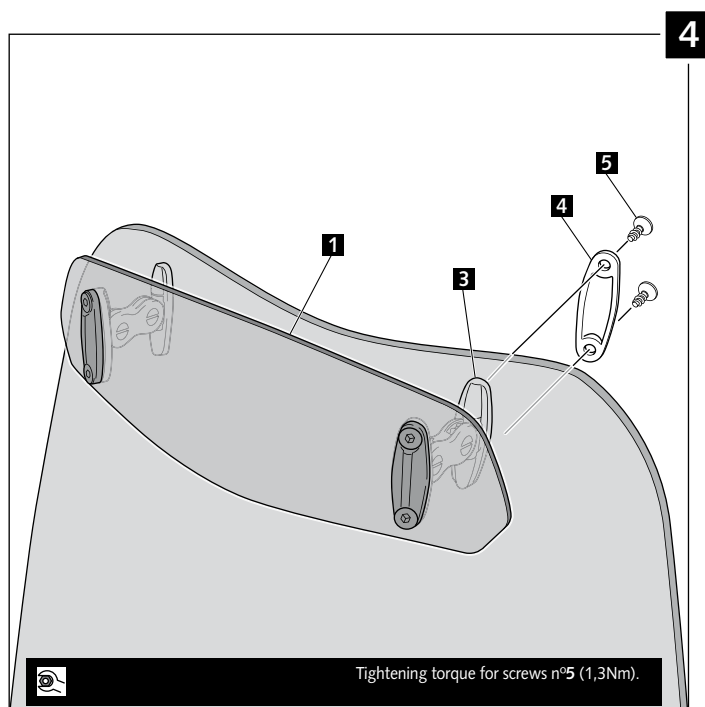
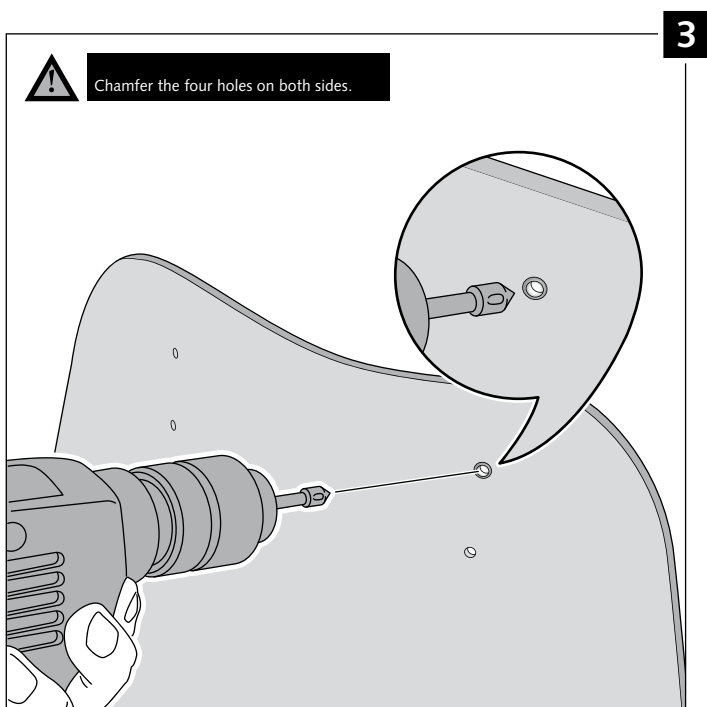
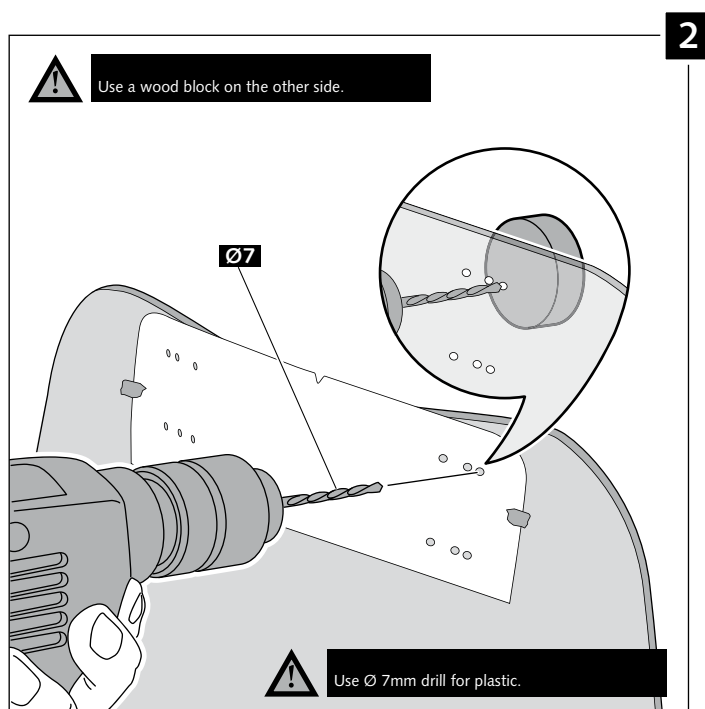
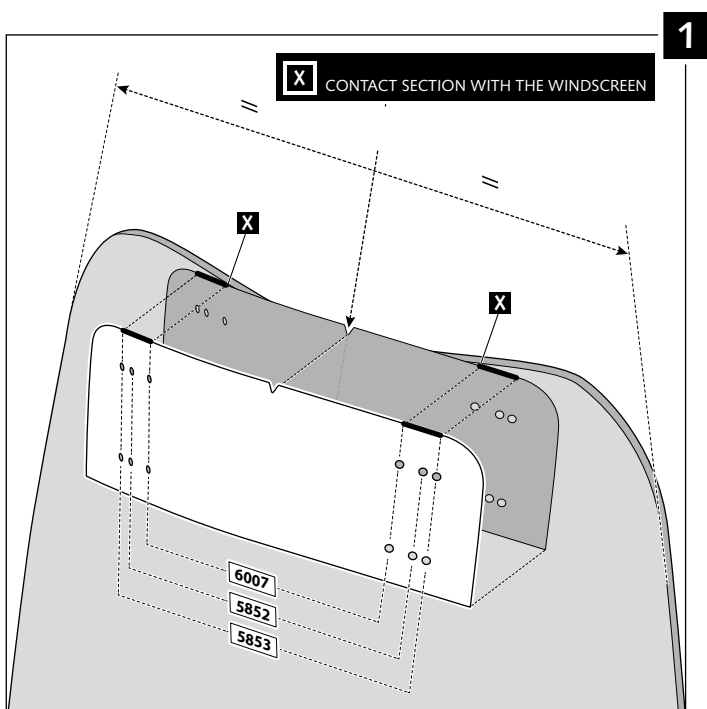
## MULTI-ADJUSTABLE VISOR

### TYPE B



## MULTI-ADJUSTABLE VISOR






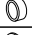


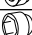
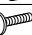


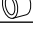

### TYPE C



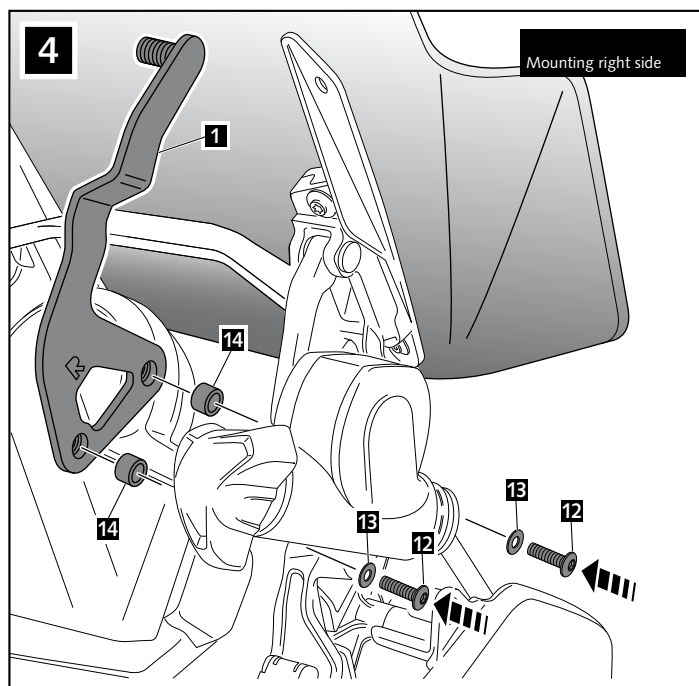
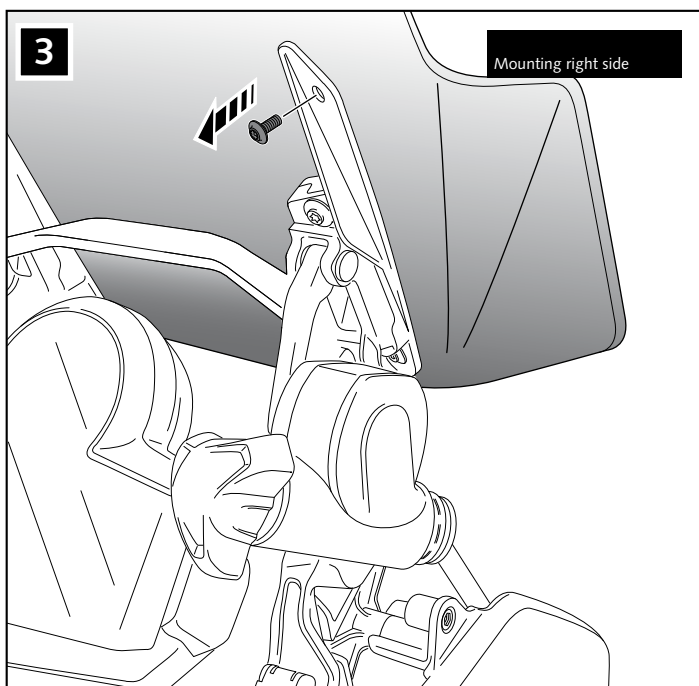
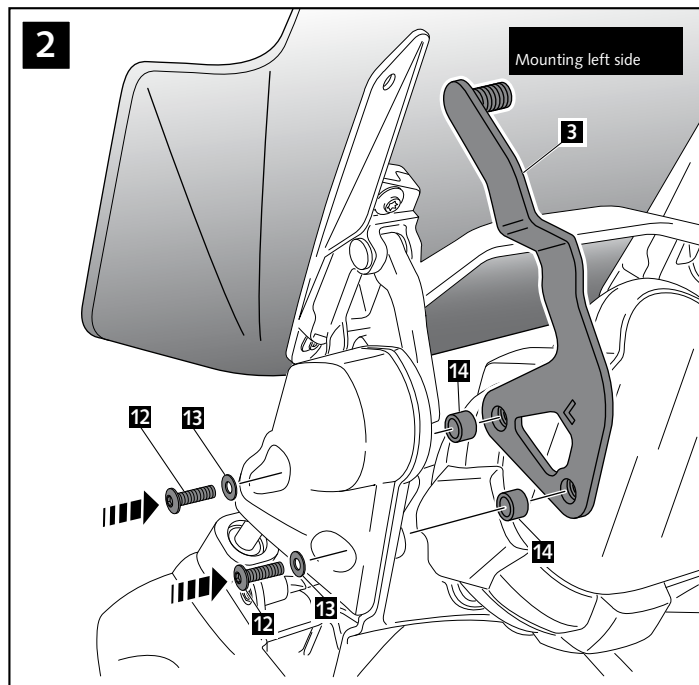
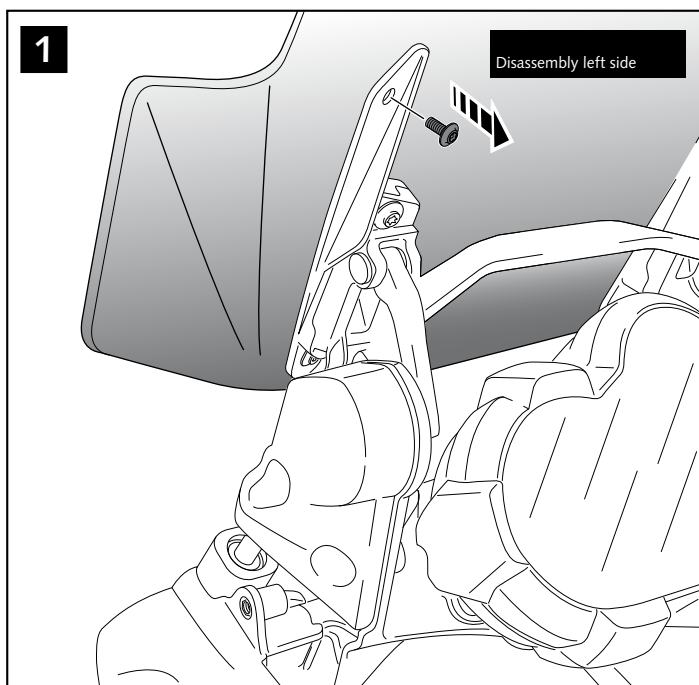
**MOUNTING INSTRUCTIONS**

SCREEN REINFORCEMENT KIT FOR  
**BMW R1200GS LC / ADVENTURE**  
**R1250GS LC / ADVENTURE**



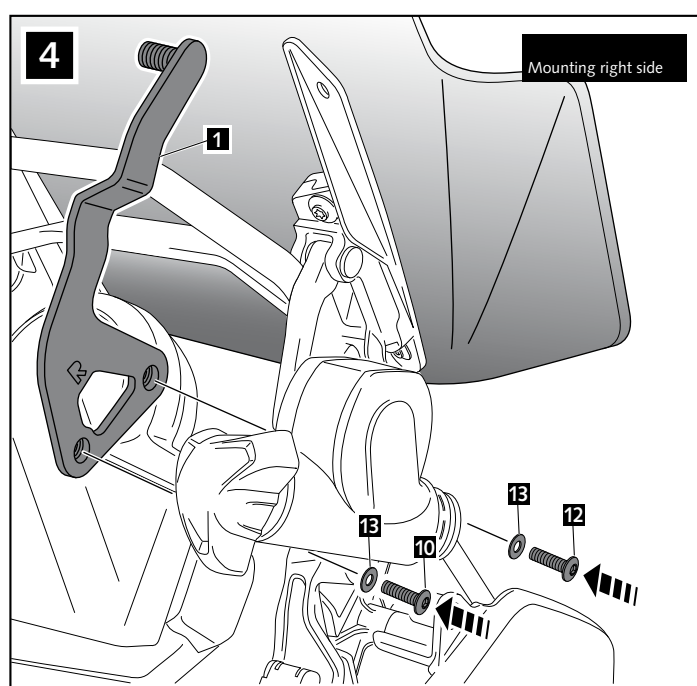
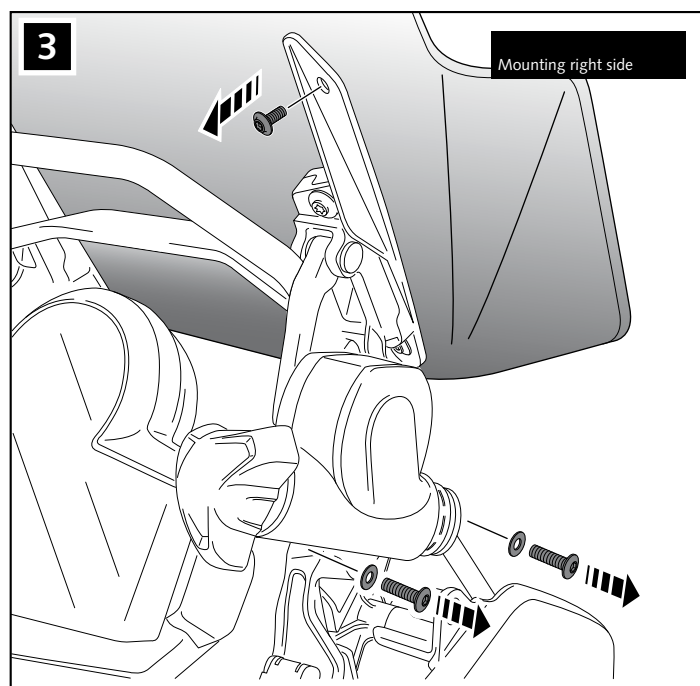
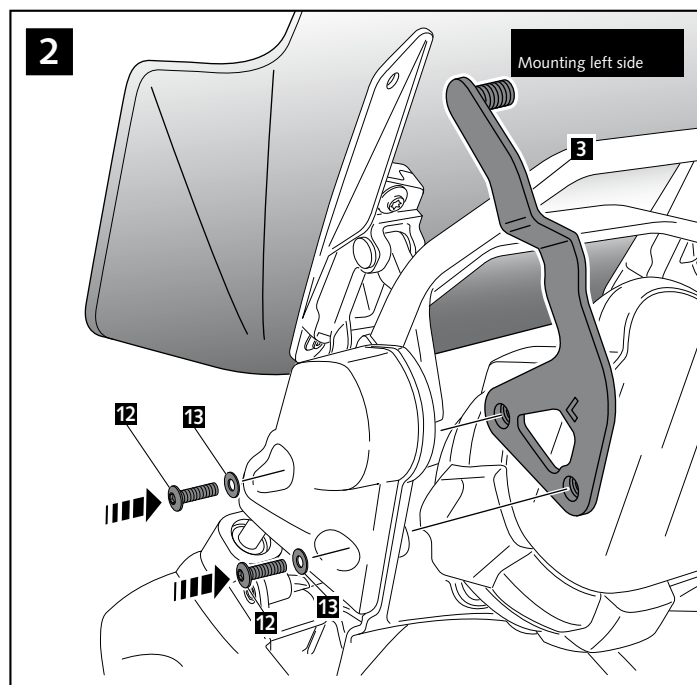
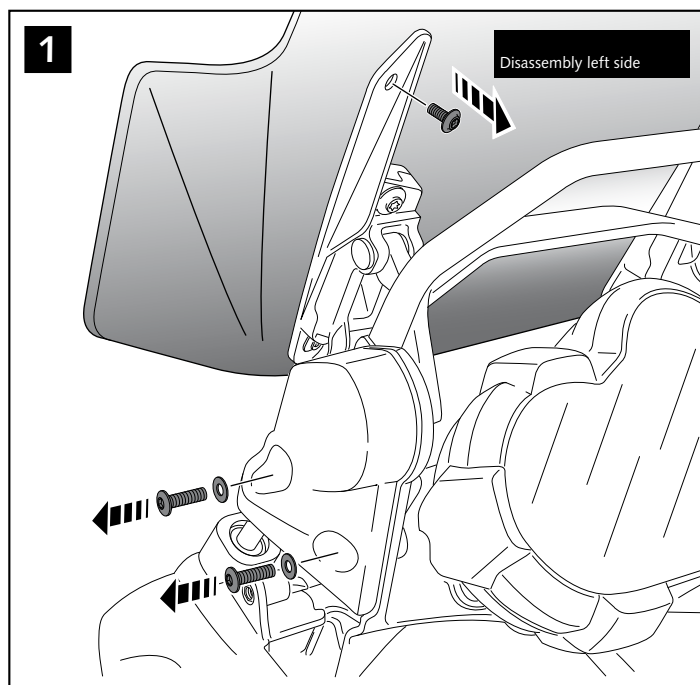
ID	PART	DESCRIPTION	QTY	REF.
1		Right fixed support	1	SOPOR4P-13-7566
2		Right guided support	1	SOPOR4P-13-7566
3		Left fixed support	1	SOPOR4P-13-7566
4		Left guided support	1	SOPOR4P-13-7566
5		Cylinder Ø inner 8,2 x Ø outer 10 x 5,3 mm (inox.)	2	CASQUI-2----572
6		Cylinder Ø inner 10,4 x Ø outer 13 x 3,3 mm (inox.)	2	CASQUI-2----572
7		Nylon Washer DIN 433 Øinner 10,5 x Øouter 18 x 1,6mm	2	ARAND-----650
8		M8x1,5 DIN125 metal washer (black)	2	ARANDPD125A-018
9		M8 locknut (black)	2	TUEA-D985.8-M8-
10		Nut cover (black)	2	CAPERUTM8--21/2
11		M5x16 Ø11 ISO 7380 screw (black)	2	TORNI-I7380-493
12		M6x25 ISO 7380 screw (black)	4	TORNI-I7380-405
13		M6x1mm metal washer (black)	4	ARANDEPD125-054
14		Cylinder Ø inner 8 x Ø outer 14x7,5 (black)	4	CASQUI8147-0193

## WITHOUT GPS SUPPORT

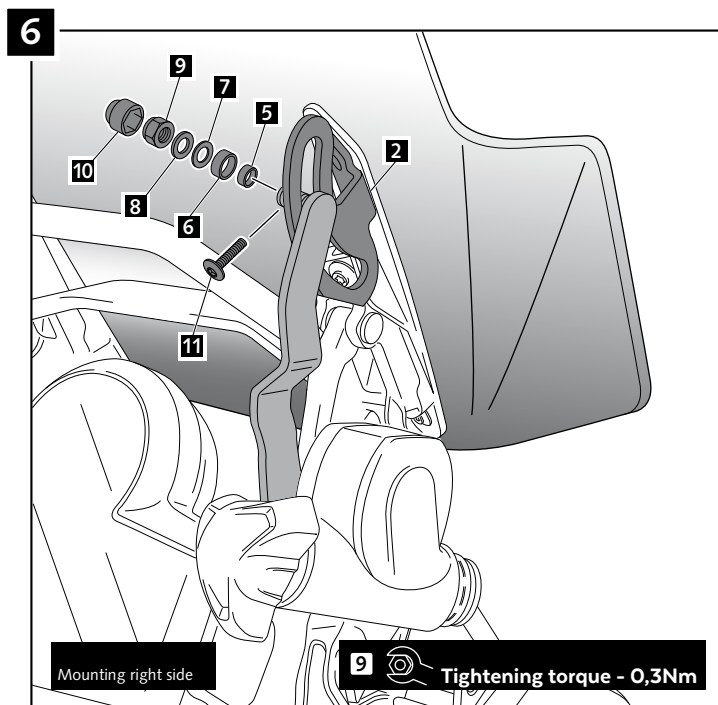
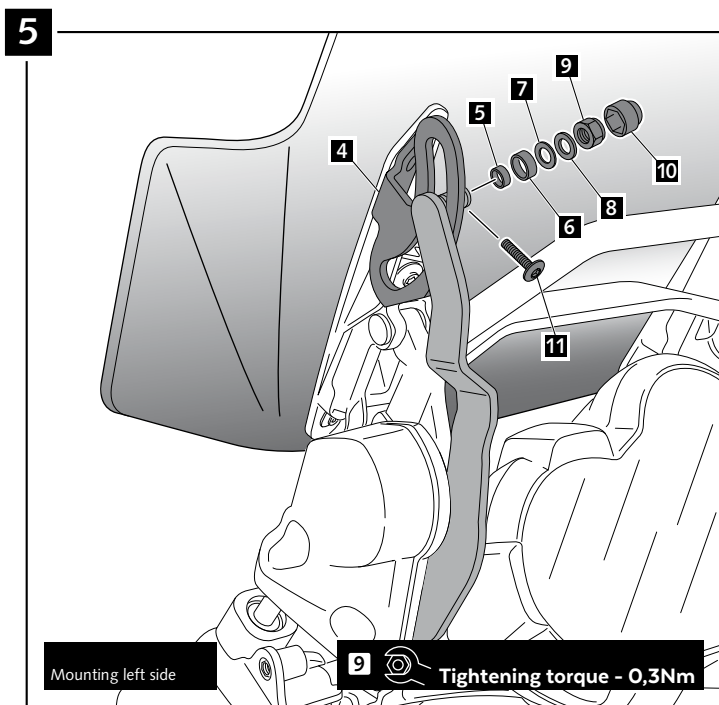




## WITH GPS SUPPORT



## WITH & WITHOUT GPS SUPPORT



### USAGE INFORMATION

THE REINFORCEMENT MECHANISM DESIGNED BY **PUIG** GIVES AN EXTRAORDINARY RIGIDITY TO THE SCREEN. ONCE IT IS MOUNTED, AND UNLIKE OTHER SYSTEMS, IT IS NOT NECESSARY TO LOOSEN THE NUT IN ORDER TO MOVE THE SCREEN. THIS MECHANISM IS DESIGNED IN ORDER TO SERVE ITS FUNCTION IN ANY POSITION OF THE SCREEN AND WITHOUT NEEDING FURTHER REGULATION.