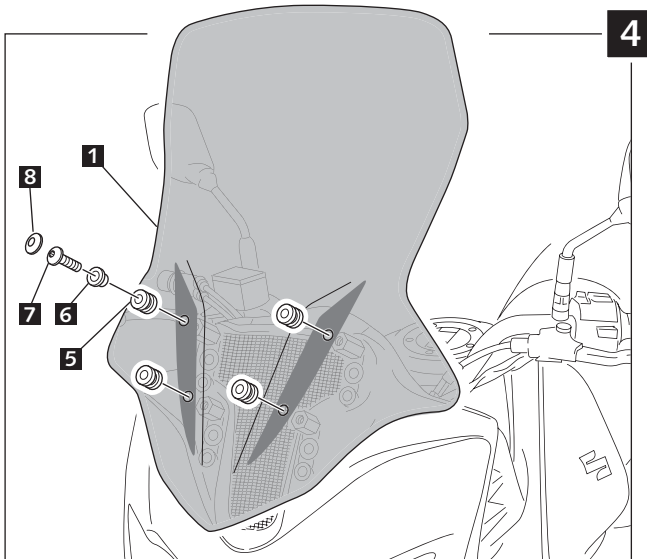
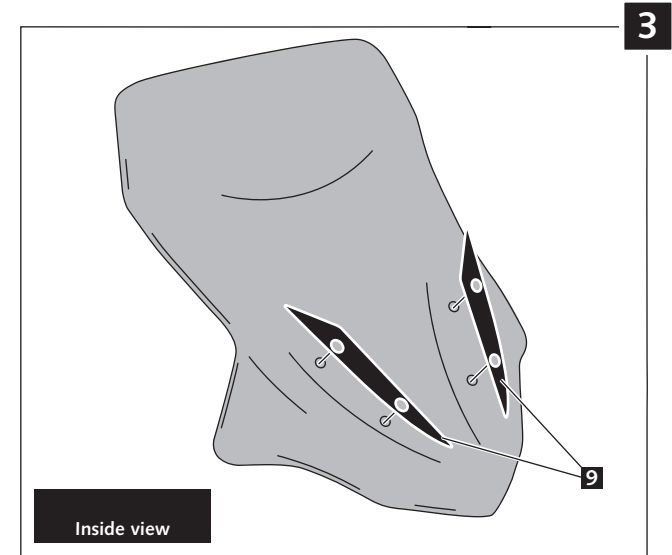
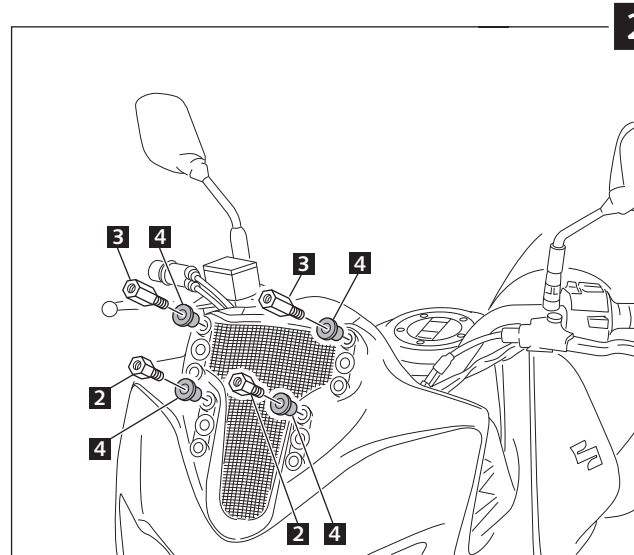
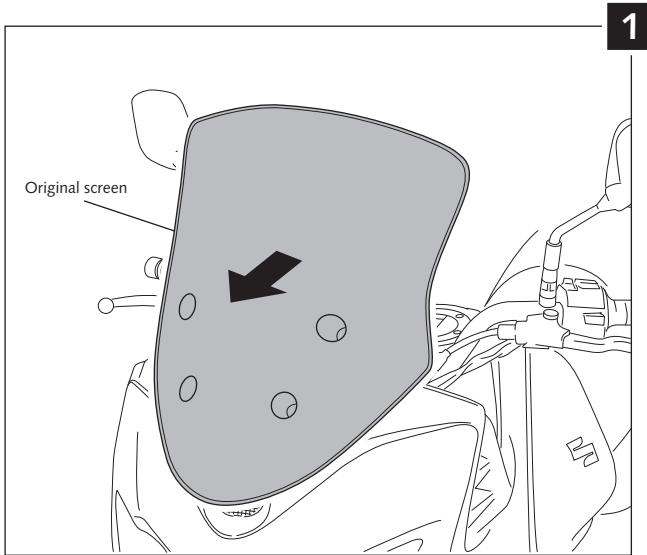


## MOUNTING INSTRUCTIONS

SCREEN ADAPTABLE TO  
SUZUKI DL 650A V-STROM 12'-/XT

Ref.: 5895



ID.		DESCRIPTION	QTY.
1		Screen	1
2		Especial nut M5x13 + hexagonal length 10	2
3		Especial nut M5x17 + hexagonal length 14	2
4		M5 well nut	4
5		Well nut	4
6		Bush with flange	4
7		M5x16 ISO 7380 Allen screw	4
8		M5 ISO7380 screw cap	4
9		Stickers set	1

## MULTI-ADJUSTABLE VISOR



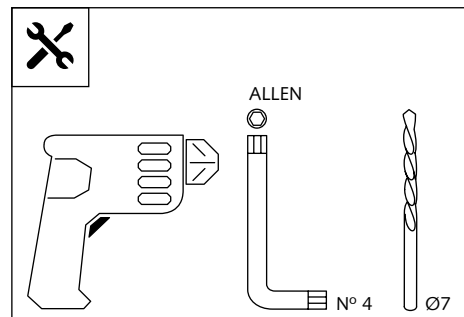
Ref.: 6007

Ref.: 5852

Ref.: 5853

Smoke

Clear



1 person



15 min

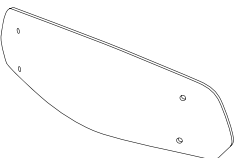




Easy

Intermediate

Difficult

Note:

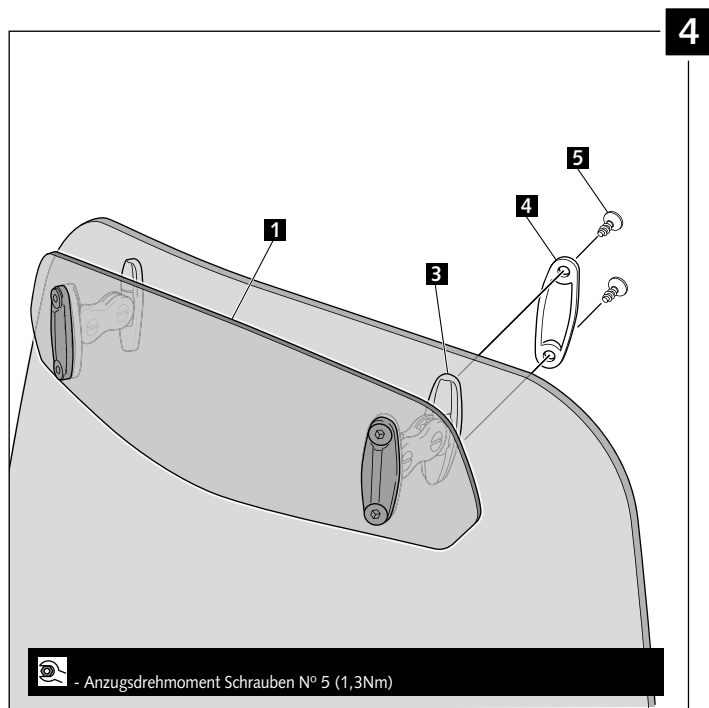
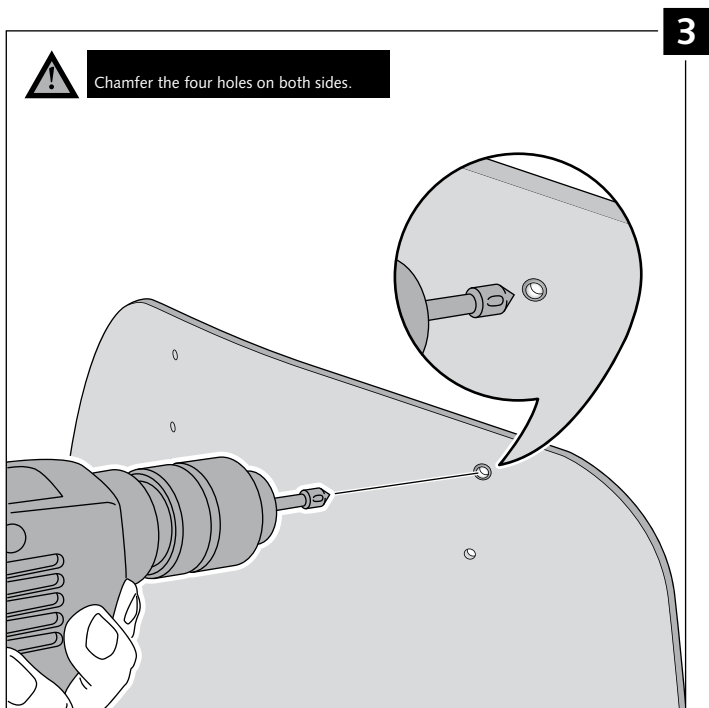
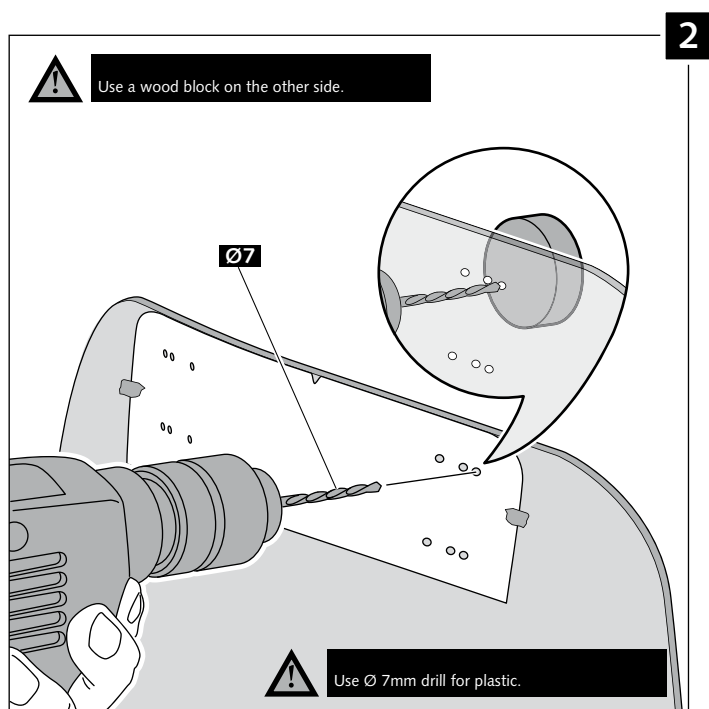
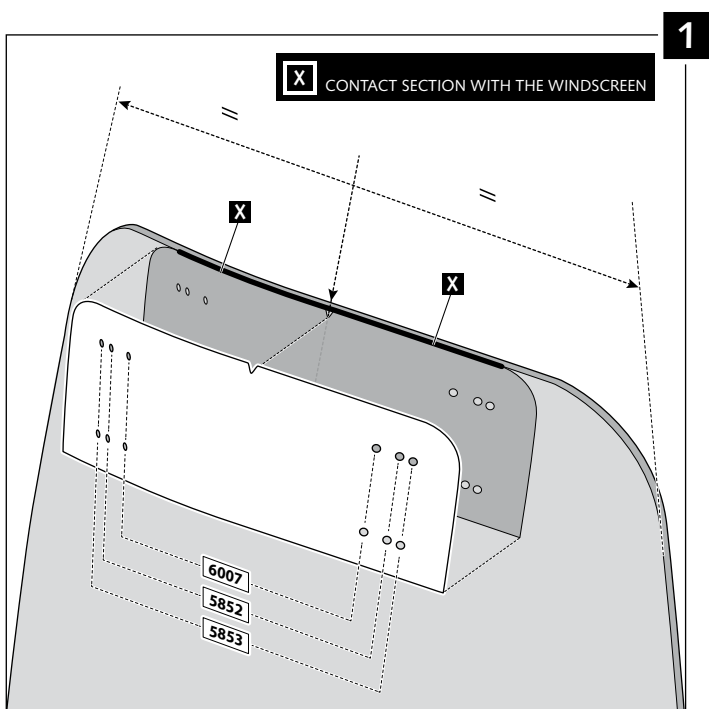
If the visor is supplied along with the windscreen, the windscreen will come factory-drilled so no drilling is necessary.

ID.	PART	DESCRIPTION	QTY.
1		Visor	1
2		Template	1
3		Multi-adjustable mechanism	2
4		Cap	4
5		Plastic thread fastener M6x12	8

# MULTI-ADJUSTABLE VISOR

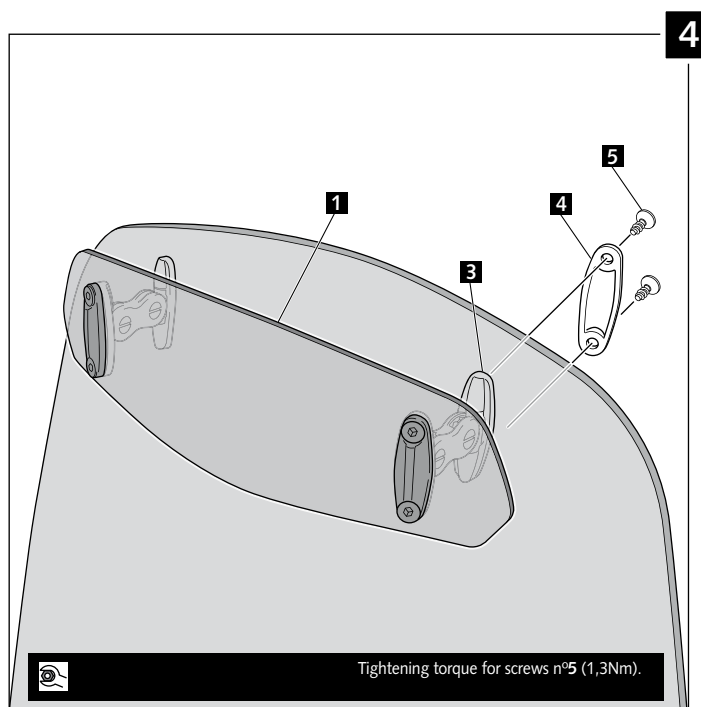
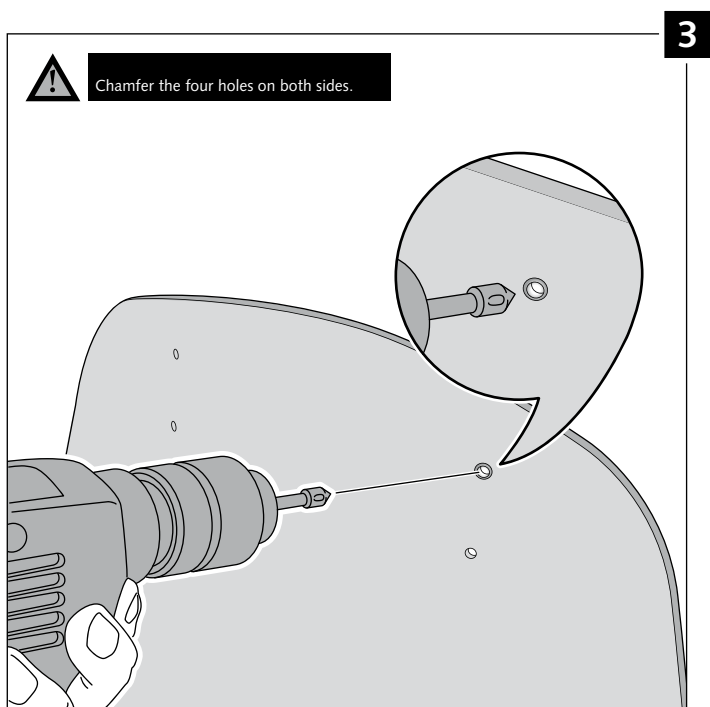
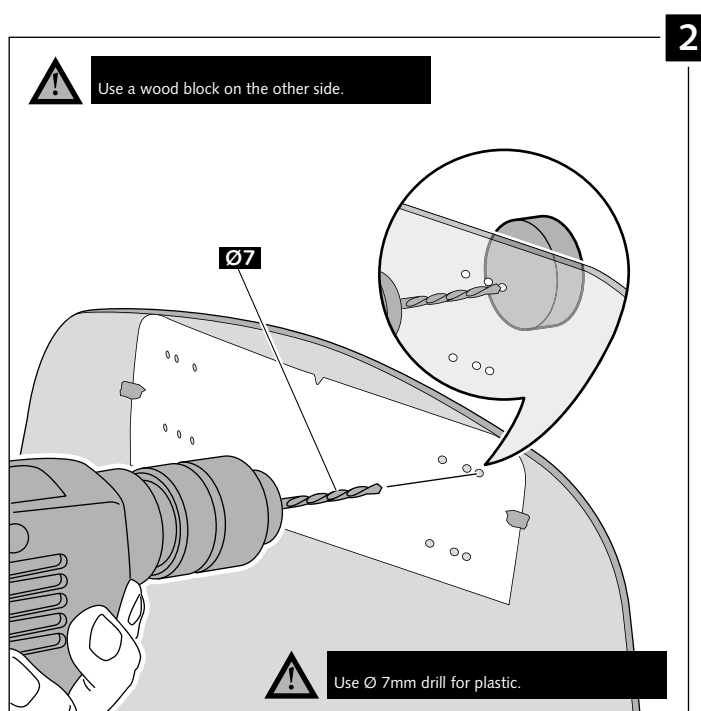
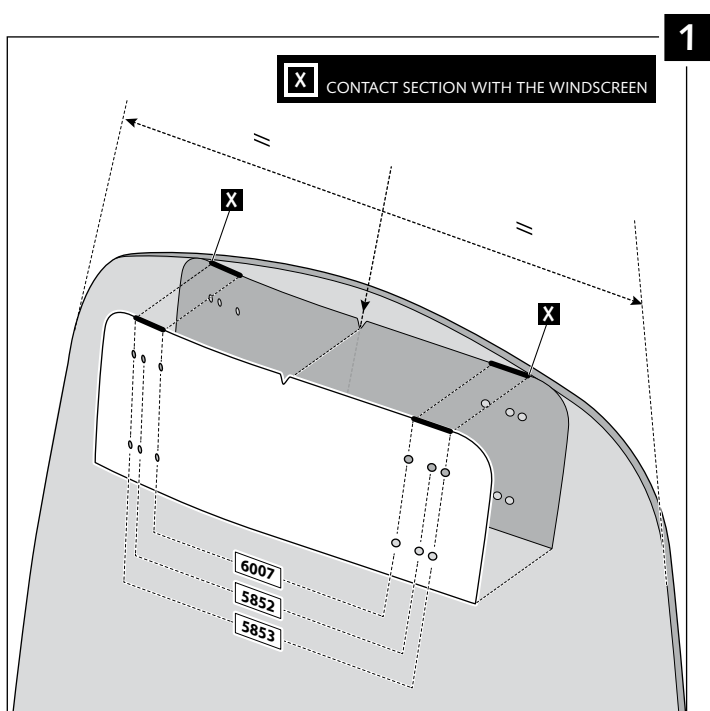
## MOUNTING INSTRUCTIONS

### TYPE A





## TYPE B





## TYPE C

