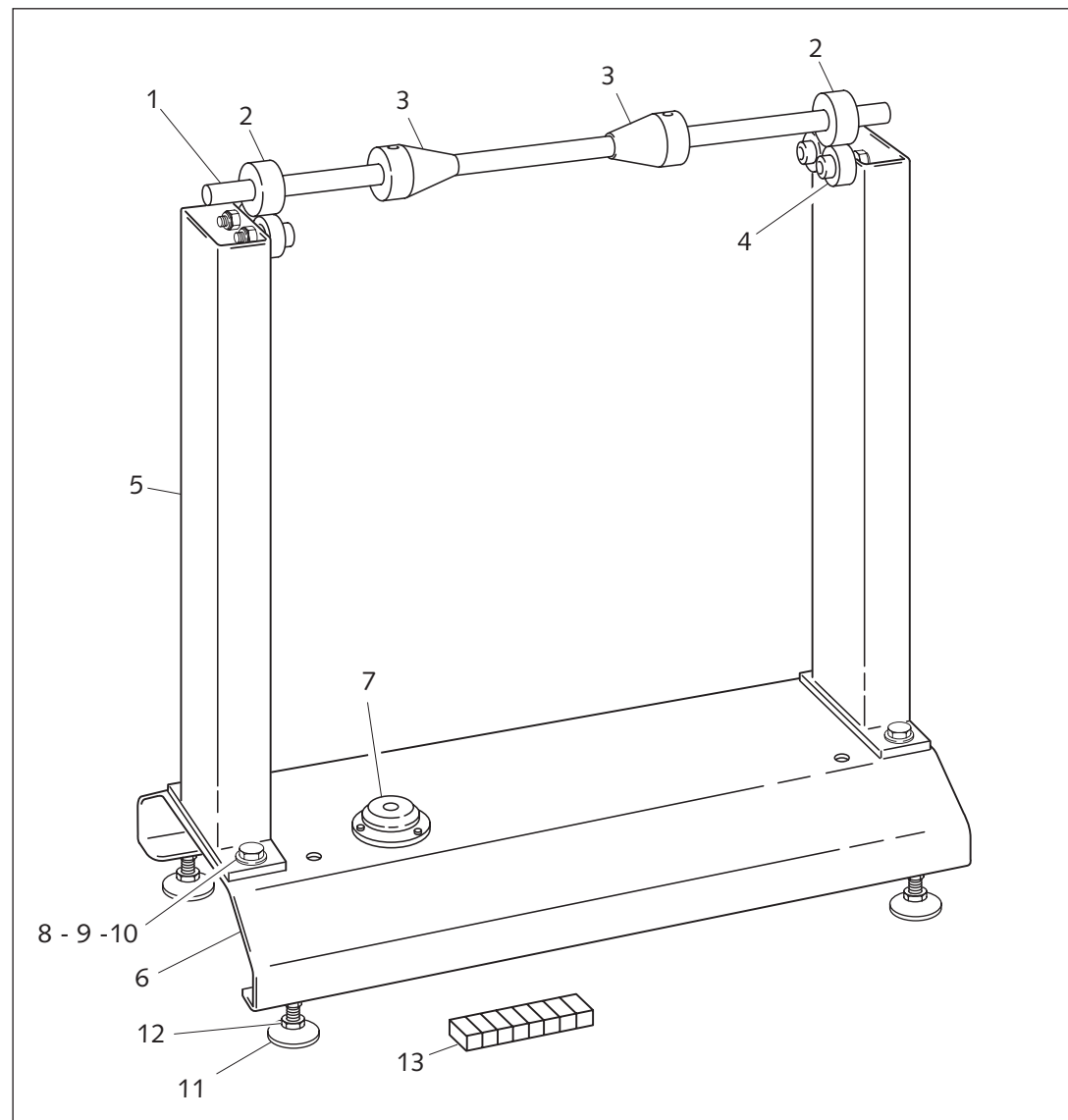
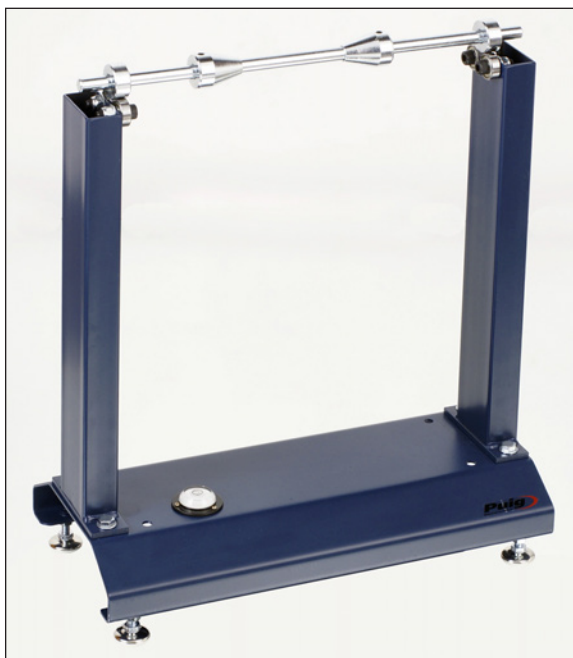


WHEEL BALANCE STAND

Ref.: 5482N



| ID. | DESCRIPTION | QTY. |
|-----|--------------------|------|
| 1 | Axle support | 1 |
| 2 | Cylinders | 2 |
| 3 | Conic cylinders | 2 |
| 4 | Rotation set | 4 |
| 5 | Columns | 2 |
| 6 | Base | 1 |
| 7 | Balance set | 1 |
| 8 | M8x20 DIN933 screw | 4 |
| 9 | M8 DIN433 washer | 4 |
| 10 | M8 DIN934 nut | 4 |
| 11 | Balance base | 1 |
| 12 | DIN6923 nut | 1 |
| 13 | Counterbalance | 8 |

Balance instructions:

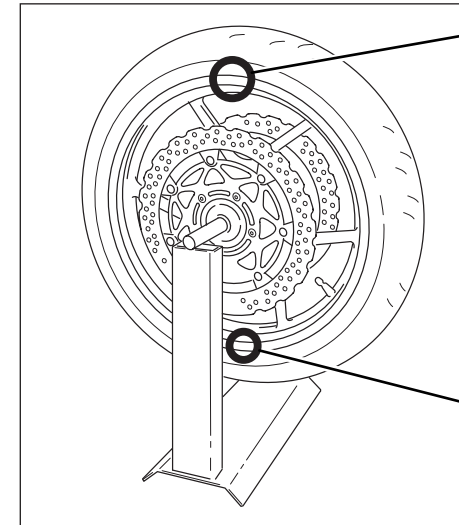
- 1- It is recommended to remove off the rear wheel the sprocket and wellnuts.
- 2- Remove old counterbalances.
- 3- Place the axle 1 through the wheel.
- 4- Place the supports 3 and 2 through the edges of the axle.
- 5- Place the wheel on the center of the balance stand.
- 6- Adjust the support 3 until they fit in the bearings of the wheel and fix it. Adjust and fix the supports 2.
- 7- Make the wheel turn a bit until it stops. As the figure 1 shows, the inferior point will be the one with more weight.
- 8- Clean the upper area and stick 15 grams (1/2 oz) of counterbalance.
- 9- Position the wheel so the counterbalance remains at the same level as the axle of the wheel, as figure 2 shows. When releasing the wheel, if it goes up means weight is needed; if otherwise goes down, it means weight exceeds.
- 10- Once the correct weight is found, press to affix the counterbalance.

BALANCE INSTRUCTIONS

WHEEL BALANCE STAND

Ref.: 5482N

Figure - 1



POINT WHERE THE
COUNTERBALANCE
MUST BE PLACED

POINT WITH HIGHEST
WEIGHT

Figure - 2

If it goes up,
weight is needed

If it goes down,
weight exceeds

