

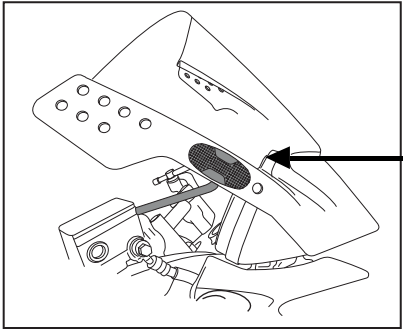


Delivered 2 units of soft sticker 30x30x7, to insert between the screen and the bike panel, if it was necessary.

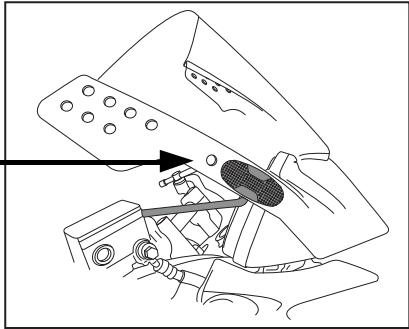
WINDSHIELD MODEL

RAFALE UNIVERSAL

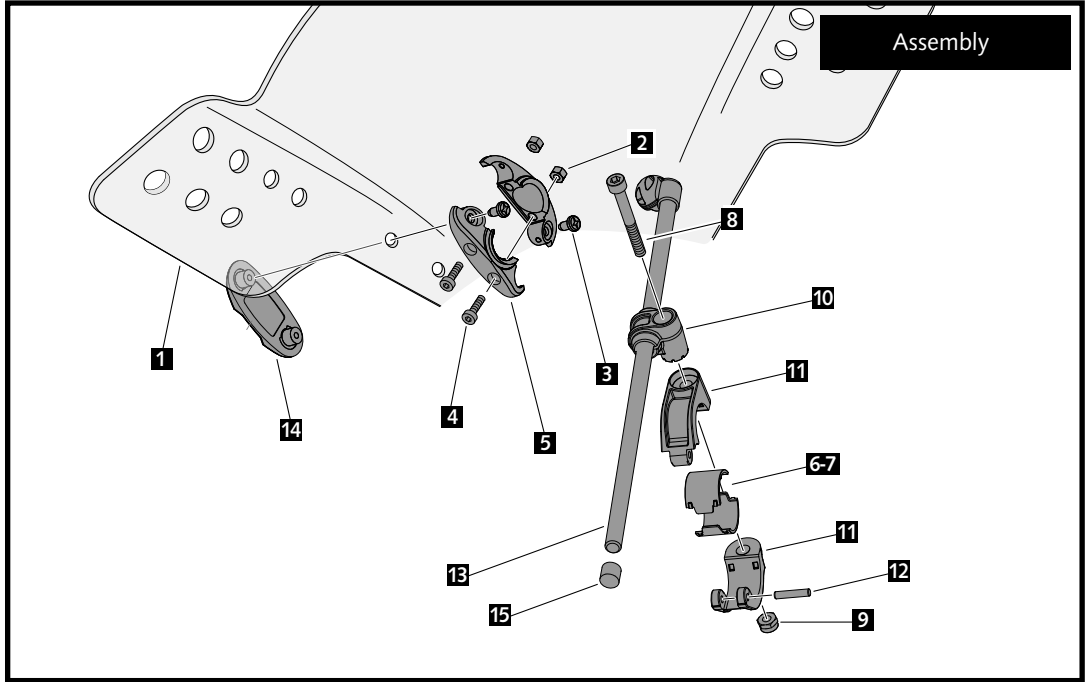
Ref.: 5881
 (black colour)
 (smoke colour) (dark smoke colour)
 (blue colour)



2 Position fixing



| ID. | DESCRIPTION | QTY. |
|-----|------------------------------|------|
| 1 | Windshield | 1 |
| 2 | M5 DIN982 Inox nut | 4 |
| 3 | M5x13 phillips screw | 4 |
| 4 | M5x20 DIN912 Inox screw | 4 |
| 5 | Ball bearing bridle | 2 |
| 6 | Medium-spacer Ø22mm | 2 |
| 7 | Medium-spacer Ø26mm | 2 |
| 8 | M6x50 DIN912 Inox screw | 2 |
| 9 | M6 DIN982 Inox nut | 2 |
| 10 | Rod guide | 2 |
| 11 | Handlebar bridle Ø29mm | 2 |
| 12 | Barrette Inox | 2 |
| 13 | Rod with ball bearing to 90° | 2 |
| 14 | Exterior cap | 2 |
| 15 | Bar cover | 2 |



It would be convenient to re-tight the windshield screws, specially the ones that are fixed to the motorcycle, whenever you maintain the vehicle.

Thanks for your attention.

IMPORTANT: On some motorcycle models it may be necessary to cut the rods to avoid them touch the gas tank when turning the handlebar.

WINDSHIELD MODEL -

RAFALE UNIVERSAL

Ref.: 5881

(black colour)
(csmoke colour) (dark smoke colour)
(blue colour)

