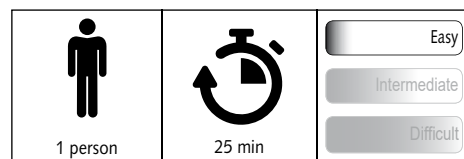
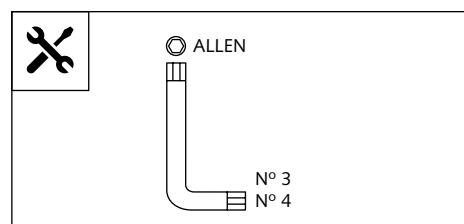


SCREEN WITH SELF-ADJUSTABLE SYSTEM FOR TRIUMPH TIGER 800 '15-'17



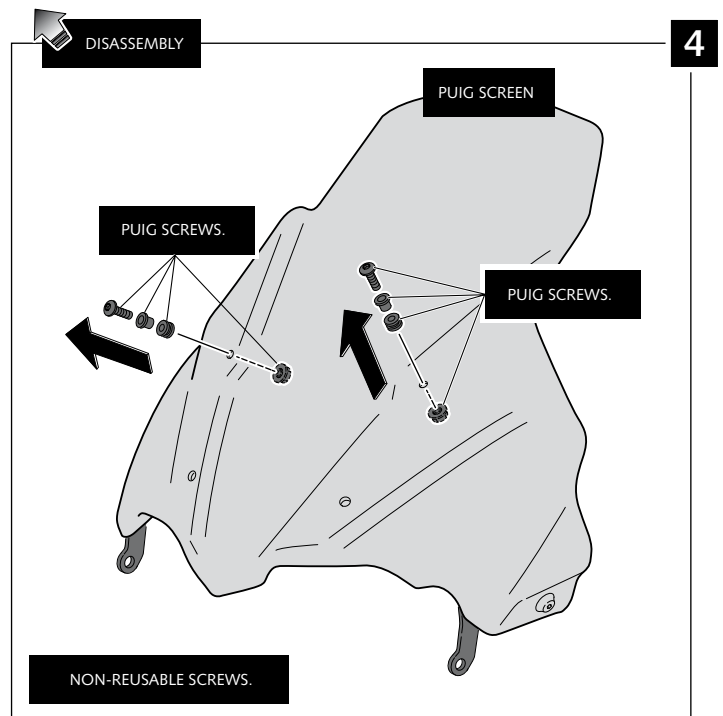
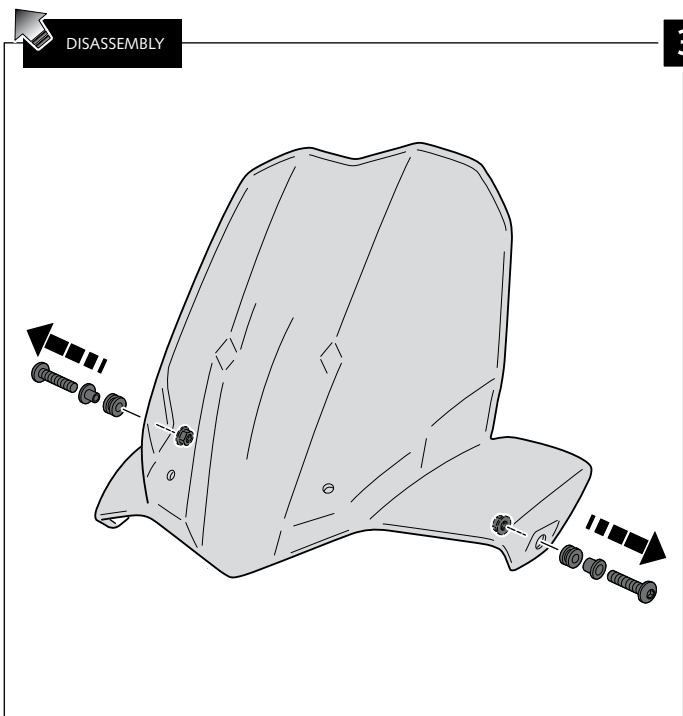
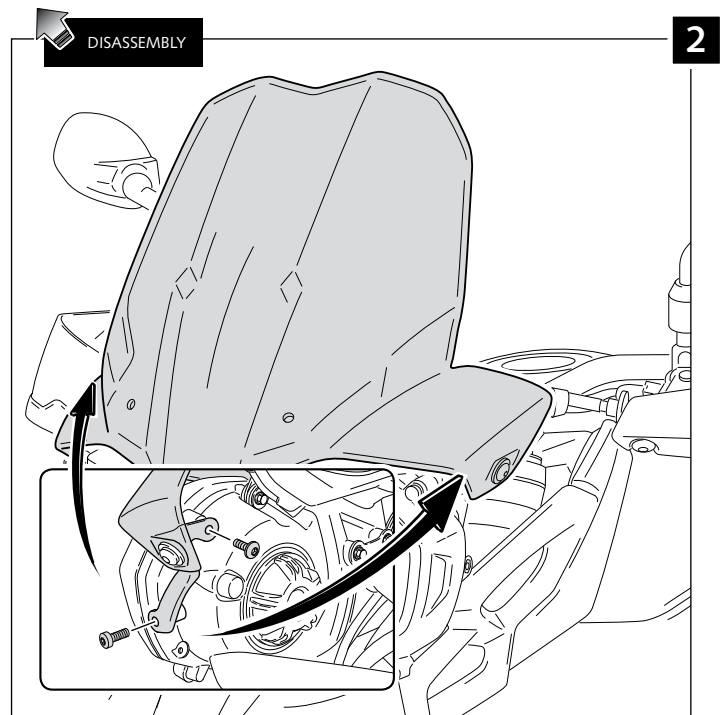
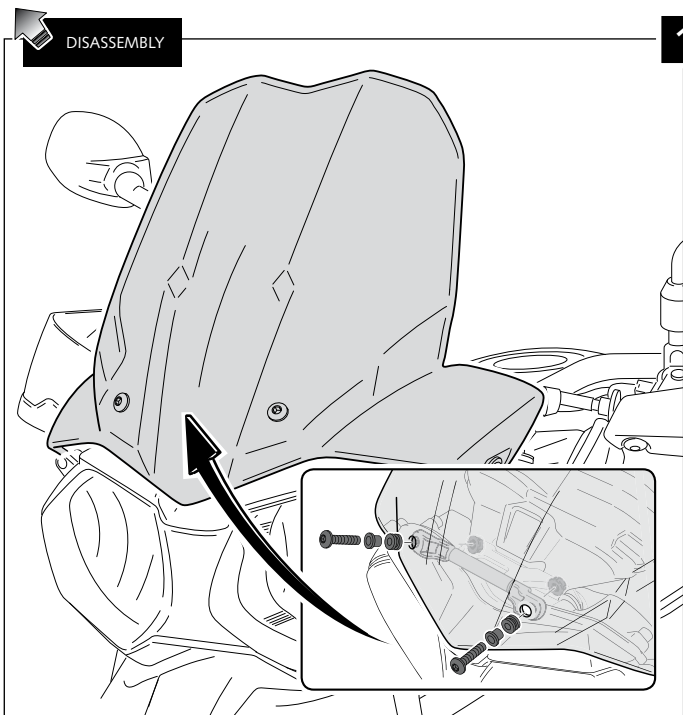
Ref.: 5652



ID	PART	DESCRIPTION	QTY	REF.
1		Screen	1	5652H/F/N/WM3
2		Mobile right support	1	SOPOR-4P-9-5652
3		Fixed right support	1	SOPOR-4P-9-5652
4		Mobile left support	1	SOPOR-4P-9-5652
5		Fixed left support	1	SOPOR-4P-9-5652
6		Ø20 x Ø6 x 5mm plastic conic washer	2	ARANDENND20-030
7		M6x15 DIN7991 Allen screw	2	TORNIAD7991-129
8		Fixation Knob M8	2	POMOFIJACION-76
9		M6 Silentblock	2	SILENTM6-046/2
10		Ø14x Ø8 x1 nylon washer	2	ARNV00000000265
11		M5x16 ISO 7380 Allen screw	2	TORNI-I7380-493
12		Ø15 xØ9 x7,5 bush with flange	2	CASQUI-1A---324
13		Ø20x Ø9 xØ7,5 Silentblock	2	SILENB0000000036
14		M5 self-locking nut	2	TUERCA-D985-585
15		M6 DIN7991 screw cap	2	TAPON-----81

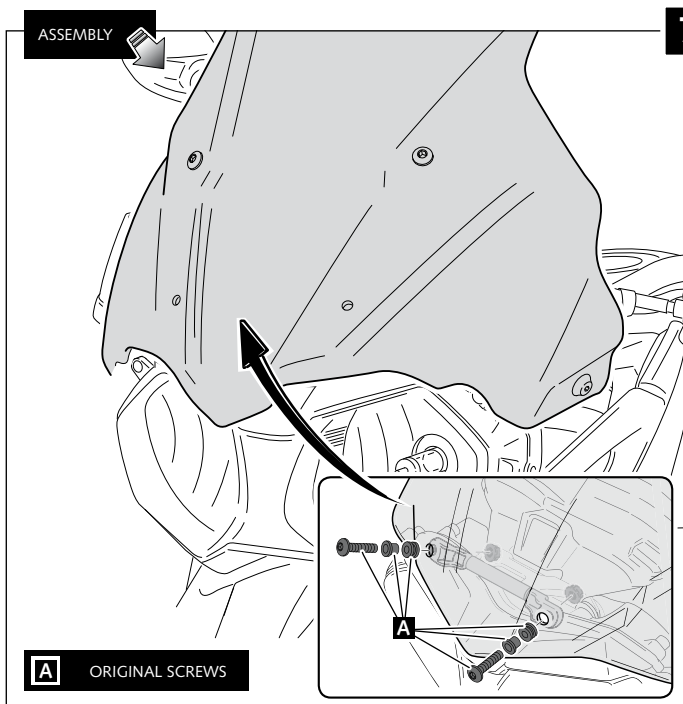
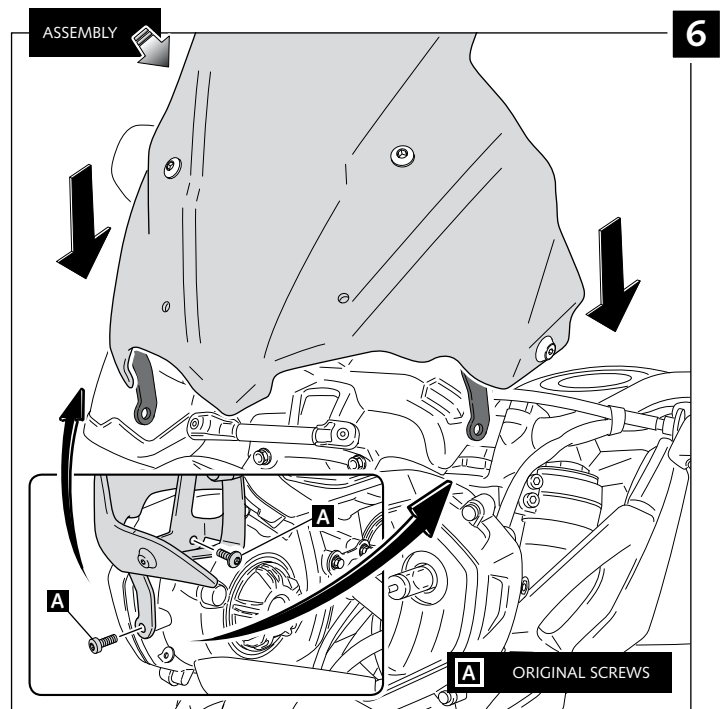
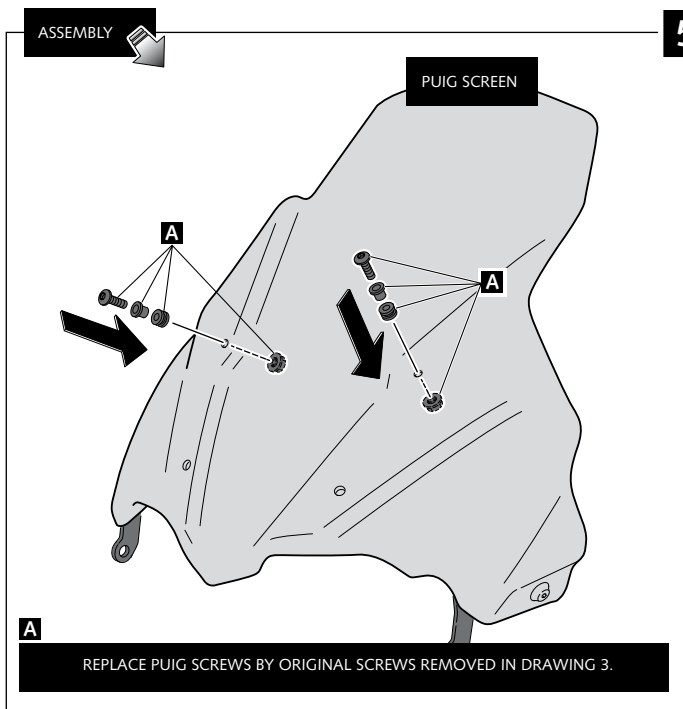
SCREEN WITH SELF-ADJUSTABLE SYSTEM FOR TRIUMPH TIGER 800 '15-'17

MOUNTING INSTRUCTIONS



SCREEN WITH SELF-ADJUSTABLE SYSTEM FOR TRIUMPH TIGER 800 '15-'17

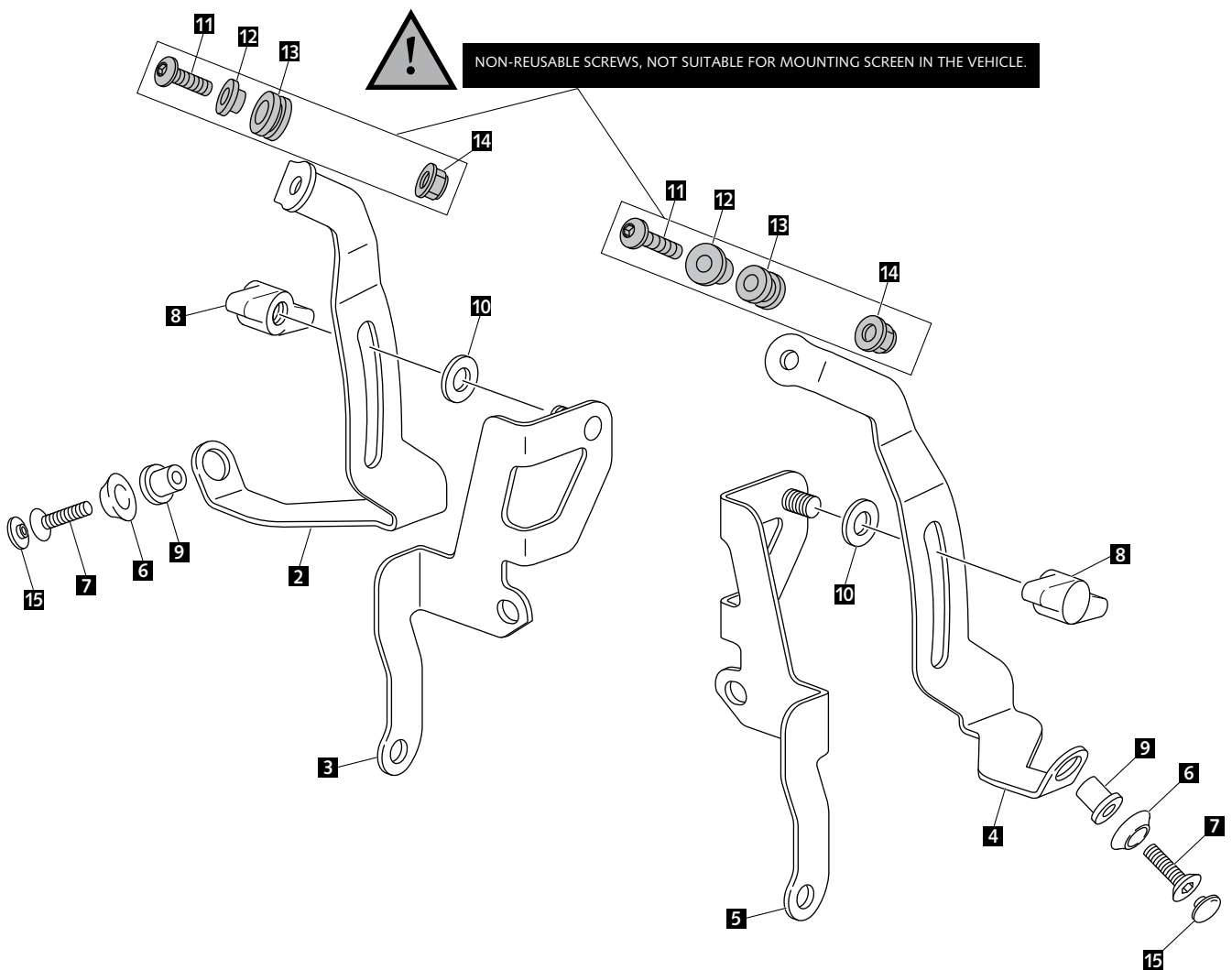
MOUNTING INSTRUCTIONS



SCREEN WITH SELF-ADJUSTABLE SYSTEM FOR TRIUMPH TIGER 800 '15-'17

MOUNTING INSTRUCTIONS

EXPLOTING



TIPS FOR A CORRECT WINDSCREEN ASSEMBLY

Due to storage and transport processes of the windscreens, which are subjected to positions and temperature changes out of our control, this may produce small deformations on the material causing some difficulties on the mounting process. It is recommended to:

- 1- Place the screws on one side without tighten all the way.
- 2- Stretch the windscreen to the other side (see Fig. 1). The flexibility of the material allows this stretch with no risk of breaking or cracking.
- 3- Place the screws without tightening all the way.
- 4- Tighten progressively all the screws.

