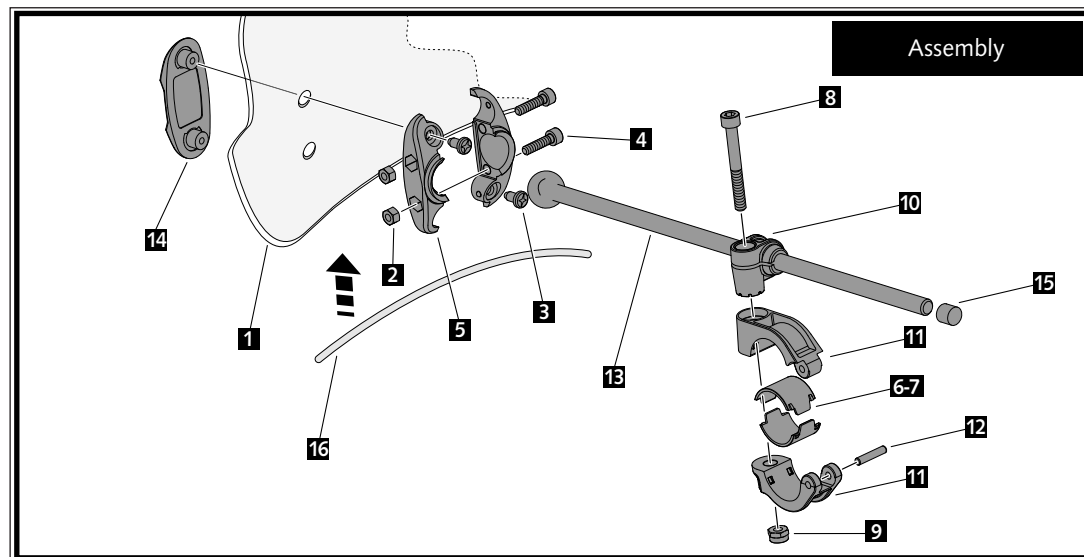


| ID. | DESCRIPTION | QTY. |
|-----|-------------------------|------|
| 1 | Windshield | 1 |
| 2 | M5 DIN982 Inox nut | 4 |
| 3 | M5x13 phillips screw | 4 |
| 4 | M5x20 DIN912 Inox screw | 4 |
| 5 | Ball bearing bridle | 2 |
| 6 | Medium-spacer Ø22mm | 2 |
| 7 | Medium-spacer Ø26mm | 2 |
| 8 | M6x50 DIN912 Inox screw | 2 |
| 9 | M6 DIN982 Inox nut | 2 |
| 10 | Rod guide | 2 |
| 11 | Handlebar bridle Ø29mm | 2 |
| 12 | Barrette Inox | 2 |
| 13 | Rod with ball bearing | 2 |
| 14 | Exterior cap | 2 |
| 15 | Bar cover | 2 |
| 16 | Trim | 1 |



It would be convenient to re-tight the windshield screws, specially the ones that are fixed to the motorcycle, whenever you maintain the vehicle.
Thanks for your attention.

