

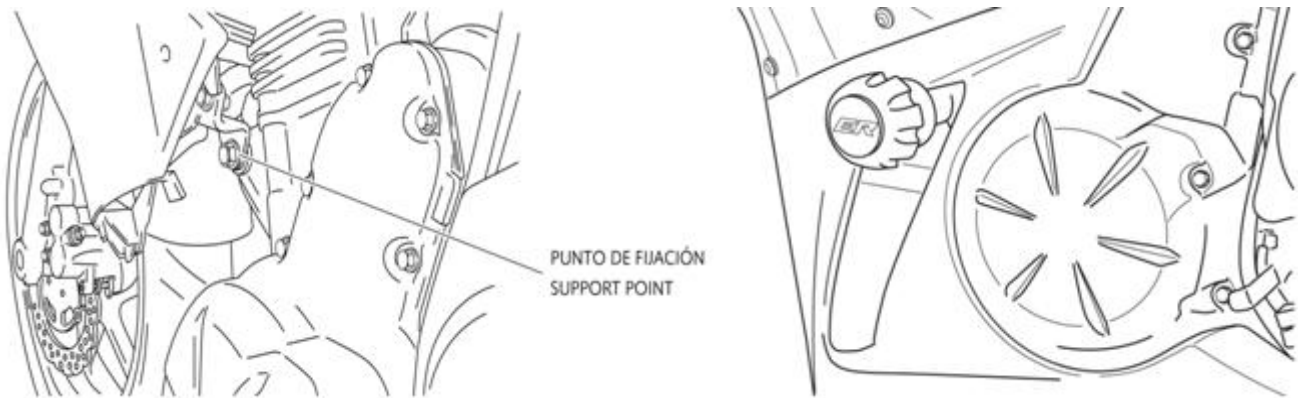
## CRASH PADS ADAPTABLE TO KAWASAKI ER6f 09'-11'



**REF: 4965**

### INSTRUCTIONS TO ASSEMBLE

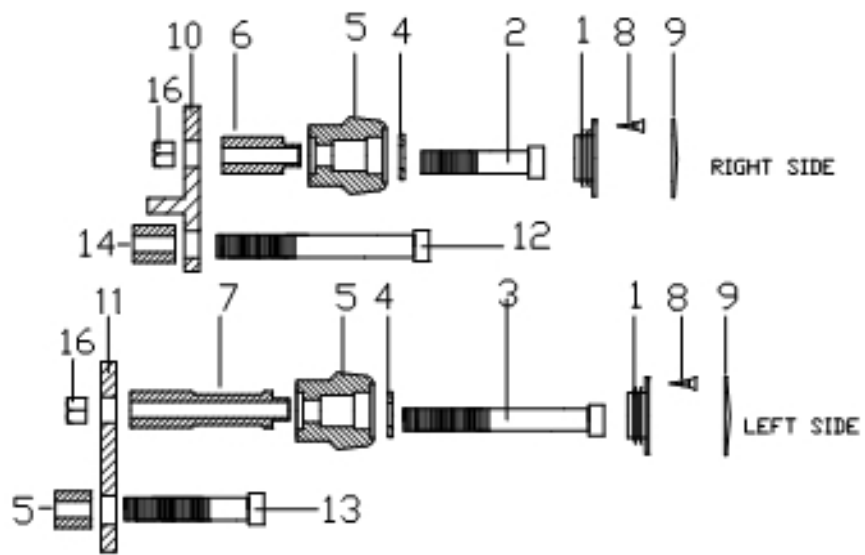
Remove the lower part of the bodywork laterals. Remove the fasteners that fix the chassis to the engine (mark on the picture below). Mount the plates (without the set cylinder-protector) on each own side (using the 12 and 13 fasteners with the original nuts). Mount the bodywork back. Next, mount the set cylinder-protector on each own side. Once tight it, mount the caps (1), tightening them with the fastener supplied (8). Finally, place the stickers (9), pressing a few seconds to secure a correct position.



*If you are not a trained mechanic, please contact a specialist for assembling the crash pads. Motoplastic,S.A. takes no responsibility for damages caused by improper installation. The using of crash pads does not guarantee a full protection in case of accident.*

### **MATERIAL SUPPLIED**

POSITION	DESCRIPTION	QUANTITY
1	Plastic caps	2
2	DIN912//M10/150x70 screw	1
3	DIN912//M10/150x130 screw	1
4	InnenØ10int x2 DIN125/A	2
5	Nylon protector	2
6	Aluminium metal arrowhead right hand side	1
7	Aluminium metal arrowhead left hand side	1
8	2,5x10 DIN7505 screw	2
9	Sticker	2
10	Right Iron Plate	1
11	Left Iron Plate	1
12	DIN912//M10/125x140 screw	1
13	DIN912//M10/125x80 screw	1
14	Aluminium metal arrowhead right hand side	1
15	Aluminium metal arrowhead left hand side	1
16	M10/150 nut DIN 6923	2



*If you are not a trained mechanic, please contact a specialist for assembling the crash pads. Motoplastic, S.A. takes no responsibility for damages caused by improper installation. The using of crash pads does not guarantee a full protection in case of accident.*