

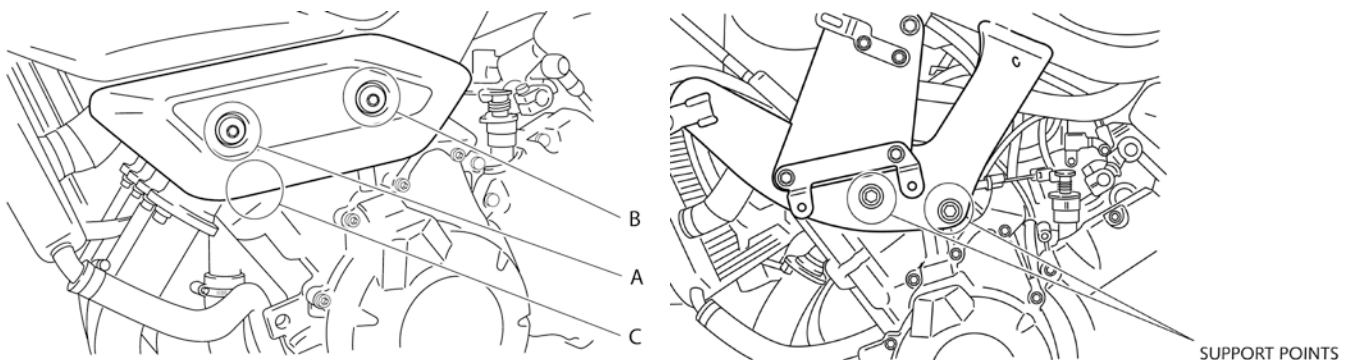
📖 CRASH PADS ADAPTABLE TO YAMAHA XJ6 09'-16'

REF: 4948



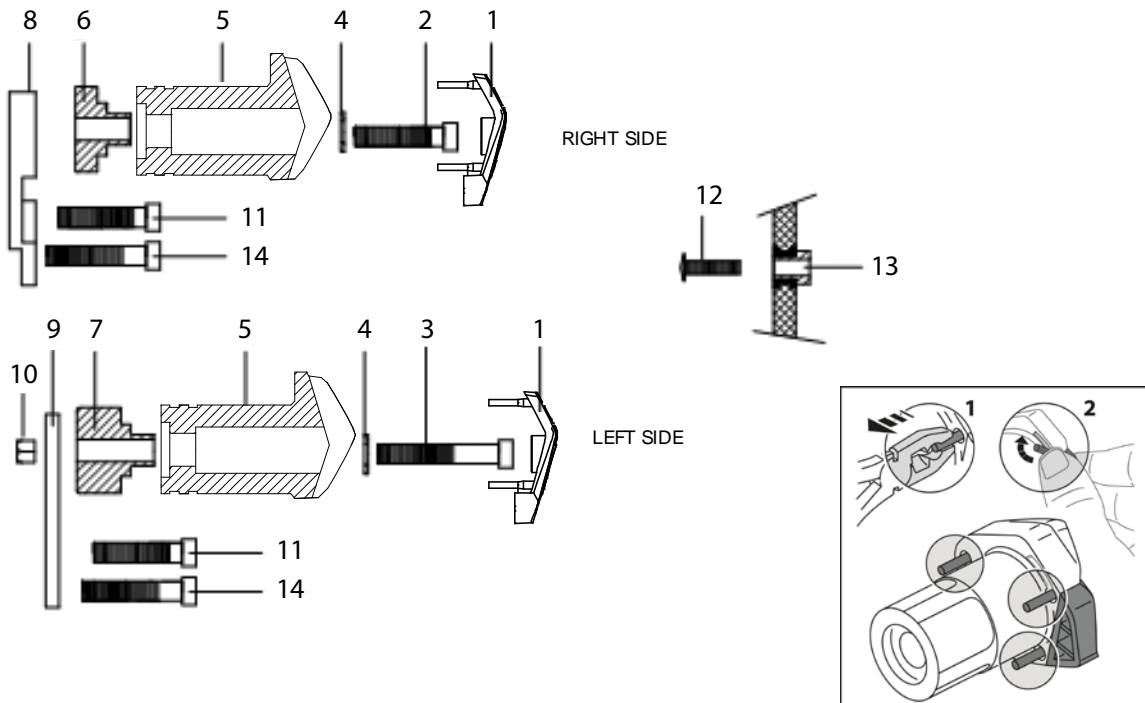
INSTRUCTIONS TO ASSEMBLE

Remove the side panels (C) of each side. Remove the screws subjecting the chassis to the engine, which you can find below the side panels. Mount the sliders on each own side as the figure shows, using the screws supplied. Once tighten, place the caps (1) using the fasteners (8). Finally, place the stickers (9) pressing a few seconds to secure a correct fit. Before mounting the side panels, the cylinders and fasteners on position A and B must be changed for the supplied 14 and 15 as the figure below shows.



MATERIAL SUPPLIED

POSITION	DESCRIPTION	QUANTITY
1	Plastic caps	2
2	M10/150x40 screw	1
3	Tornillo M10/150x55 screw	1
4	Arandela Ø20ext.Ø10int x2 washer	2
5	Protector Nylon protector	2
6	Aluminium cylinder right hand side	1
7	Aluminium cylinder left hand side	1
8	Right off set	1
9	Left off set	1
10	Tuerca M10/150 DIN985// M10/150 DIN985 Nut	1
11	Tornillo M10/125x40 DIN912// M10/125x40 screw	2
12	Tornillo Black M6x25 DIN1001	4
13	Casquillo tapa// Cylinder for side panels	4
14	TornilloOriginal M10/125x45 screw	2



THE USE OF CRASH PADS DO NOT GUARANTEE A FULL PROTECTION IN CASE OF ACCIDENT. MOTOPLASTIC-PUIG DECLINE ANY RESPONSIBILITY IN CASE OF MOTORCYCLE DAMAGE.
 DER ANBAU VON CRASH PADS GARANTIERT KEINEN VOLLEN SCHUTZ BEI EINEM STURZ. MOTOPLASTIC S.A. LEHNT JEGLICHE VERANTWORTUNG FÜR EINEN SCHADEN AN DEM MOTORRAD AB.