

WINDSHIELD TRAFFIC ADAPTABLE A

UNIVERSAL

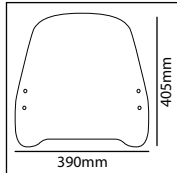
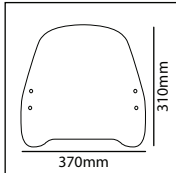
Mod.: TRAFIC
Ref.: 4873

Mod.: URBAN
Ref.: 7599



MOD. TRAFIC

MOD. URBAN

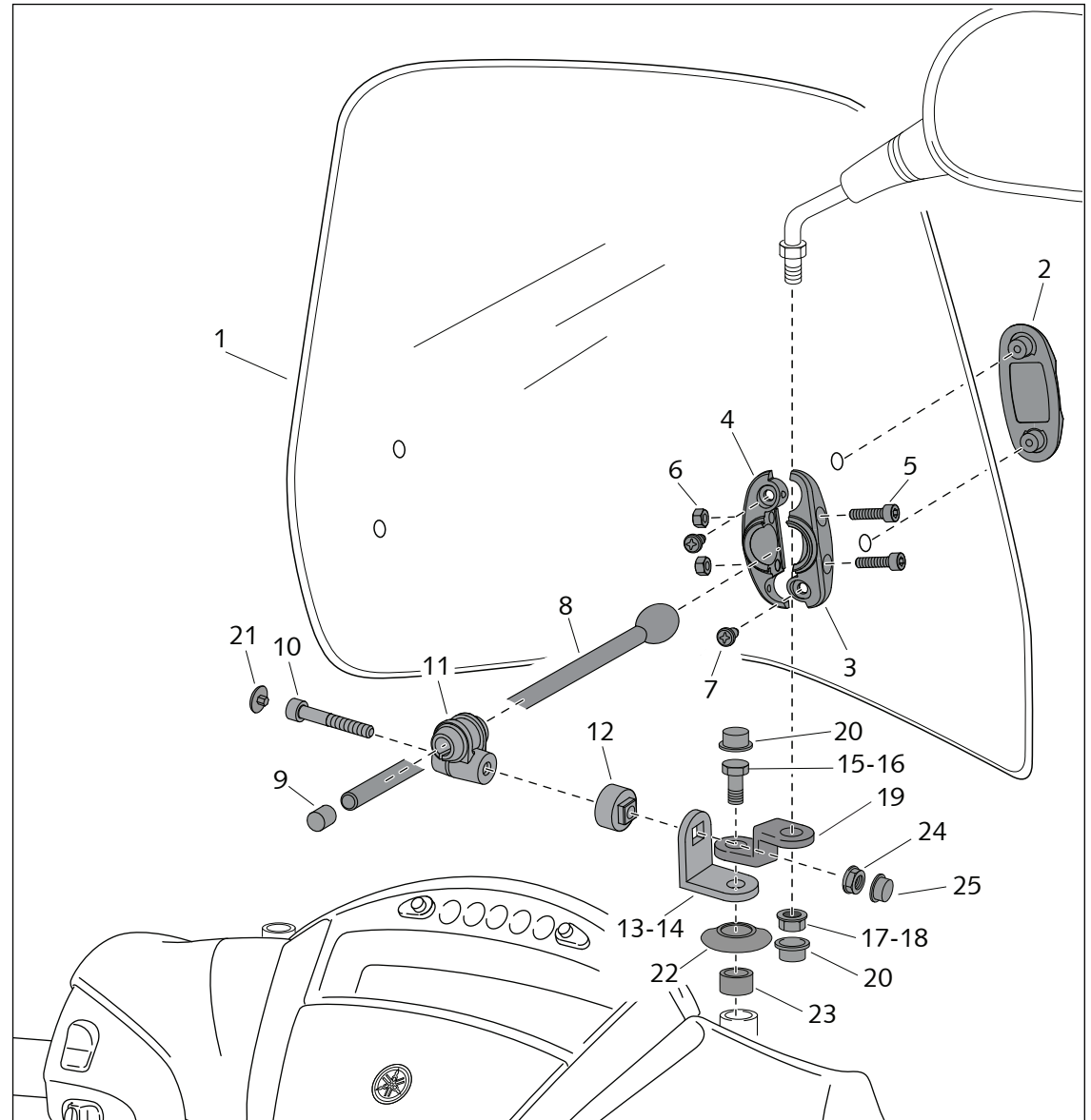


PREVENTION

- Use water and neutral soap to clean the windshield.
- Check the tightening of the fasteners periodically.
- Park the scooter facing the sun, avoiding the sun-reflection effect that may damage some parts.
- Park if possible on even surfaces.

Thanks for your attention.

| ID. | DESCRIPTION | QTY. |
|-----|--------------------------------------|------|
| 1 | Windshield | 1 |
| 2 | Exterior cap | 2 |
| 3 | Ball bearing exterior support | 2 |
| 4 | Ball bearing interior support | 2 |
| 5 | M5x20 DIN912 allen screw | 4 |
| 6 | M5 DIN982 lock nut | 4 |
| 7 | M5x13 phillips screw | 4 |
| 8 | Straight rod Ø9x200 | 2 |
| 9 | Final bar cap | 2 |
| 10 | M8x40 DIN912 screw | 2 |
| 11 | Rod guide support | 2 |
| 12 | Coupling angle | 2 |
| 13 | Ø8 angle Ref.:581 | 2 |
| 14 | Ø10 angle Ref.:582 | 2 |
| 15 | M8x25 - 30 - 35 - 45 screw | 8 |
| 16 | M8x25 - 30 - 35 - 45 screw left side | 8 |
| 17 | M8 DIN6923 nut | 2 |
| 18 | M8 DIN912 screw cap | 2 |
| 19 | Mirror support Ø8xØ8 | 2 |
| 20 | M8 nut cover | 4 |
| 21 | M8 DIN6923 nut | 2 |
| 22 | M8 nut cover | 2 |
| 23 | Ø14xØ8x6 - 12 - 22 - 30 spacer | 8 |
| 24 | M6 DIN6923 nut | 2 |
| 25 | M6 nut cover | 2 |



Check out the collection of motorcycle windshields & fairings we offer.