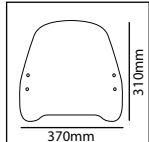
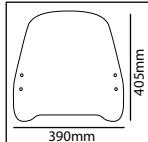




MOD. TRAFIC



MOD. URBAN



PREVENTION

- Use water and neutral soap to clean the windshield.
- Check the tightening of the fasteners periodically.
- Park the scooter facing the sun, avoiding the sun-reflection effect that may damage some parts.
- Park if possible on even surfaces.

Thanks for your attention.

ID.	DESCRIPTION	QTY.
1	Windshield	1
2	Exterior cap	2
3	Ball bearing exterior support	2
4	Ball bearing interior support	2
5	M5x20 DIN912 allen screw	4
6	M5 DIN982 lock nut	4
7	M5x13 phillips screw	4
8	Straight rod Ø9x120	2
9	Final bar cap	2
10	M8x40 DIN912 screw	2
11	Rod guide support	2
12	Coupling angle	2
13	Ø8 Ø10 angle Ref.:581	2
14	44x2'5xØ8 platen	2
15	M8x55 DIN931 screw	2
16	M8 flat nut cover	8
17	M8 DIN912 screw cap	2
18	M8x20 DIN931 screw	2
19	M8 DIN6923 nut	2
20	Ø8xØ8 support	2
21	M8 nut	4
22	Ø14xØ8x34 spacer	2
23	M8 flat nut cover	2

WINDSHIELD ADAPTABLE TO

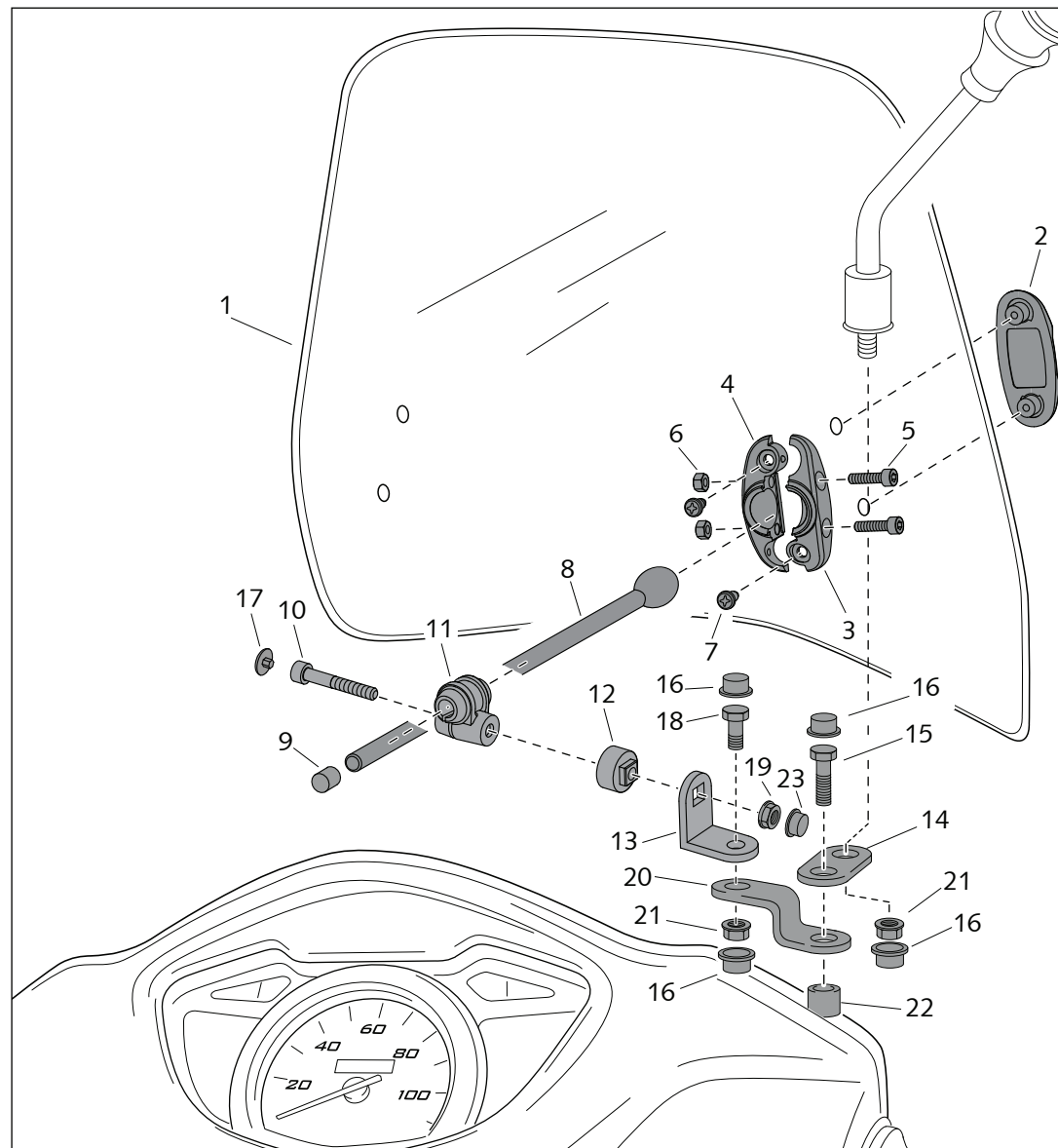
HONDA 110 LEAD

Mod.: TRAFIC

Ref.: 4872

Mod.: URBAN

Ref.: 8450



Check out the collection of motorcycle windshields & fairings we offer.