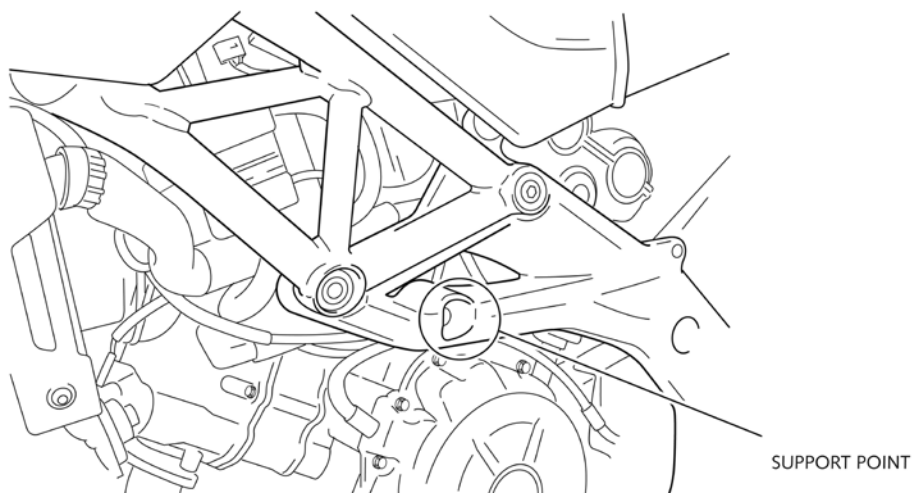


**CRASH PAD FOR APRILIA SHIVER**  
**REF:4706**

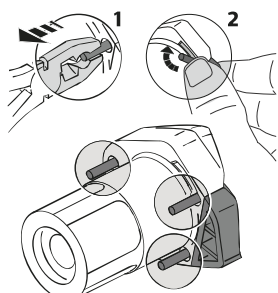
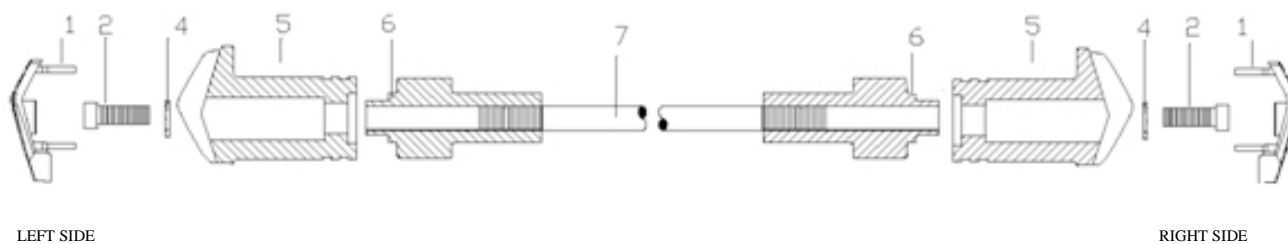


**INSTRUCTIONS TO ASSEMBLE**



**MATERIAL SUPPLIED**

POSITION	DESCRIPTION	QUANTITY
1	Plastic lids	2
2	M12/175x25 din912	2
4	Ø20ext.Ø12,5int x2 washer	2
5	Nylon protector	2
6	Aluminium metal arrowhead	2
7	310mm screw bar	1



THE USE OF CRASH PADS DO NOT GUARANTEE A FULL PROTECTION IN CASE OF ACCIDENT. MOTOPLASTIC-PUIG DECLINE ANY RESPONSIBILITY IN CASE OF MOTORCYCLE DAMAGE.

Learn more about motorcycle frame and body we have.