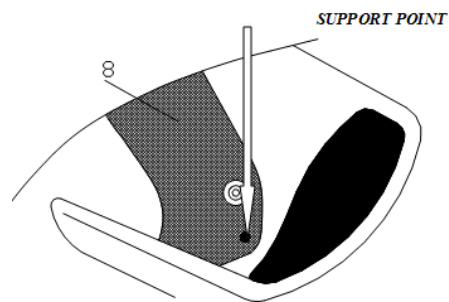


📖 CRASH PADS ADAPTABLE TO SUZUKI HAYABUSA 08'-12'
REF: 4653



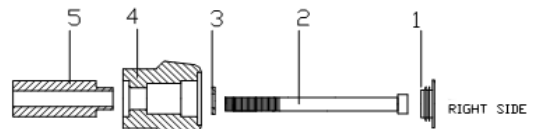
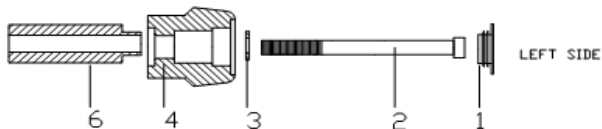
INSTRUCTIONS TO ASSEMBLE

In order to mount the crash pads, it is need to drill the bodyworks on both sides. First, take the templates supplied (8) and mark on the bodywork where it needs to be drilled. The first drill must be made on a diameter 6mm (it will be used as a guide), and then, you can drill with the hole saw supplied a diameter 40mm (9). Once drilled, remove the original fixation fasteners of the chassis, and mount the crash pads. Once tightened, place the caps (1).



MATERIAL SUPPLIED

POSITION	DESCRIPTION	QUANTITY
1	Plastic caps	2
2	M10/125x120 screw DIN912	2
3	Ø20ext.Ø10,5int x2 washer	2
4	Nylon protector	2
5	Aluminium metal arrowhead right hand side	1
6	Aluminium metal arrowhead left hand side	1
8	Template to mark the drills	2
9	Hole saw Ø 30	1



If you are not a trained mechanic, please contact a specialist for assembling the crash pads. Motoplastic,S.A. takes no responsibility for damages caused by improper installation. The using of crash pads does not guarantee a full protection in case of accident.