

CRASH PADS ADAPTABLE TO HONDA CBF600/S 08'-14' / HORNET 600 07'-

REF: 4423



INSTRUCTIONS TO ASSEMBLE

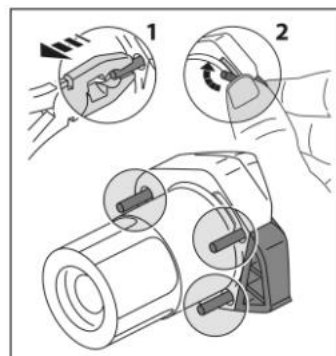
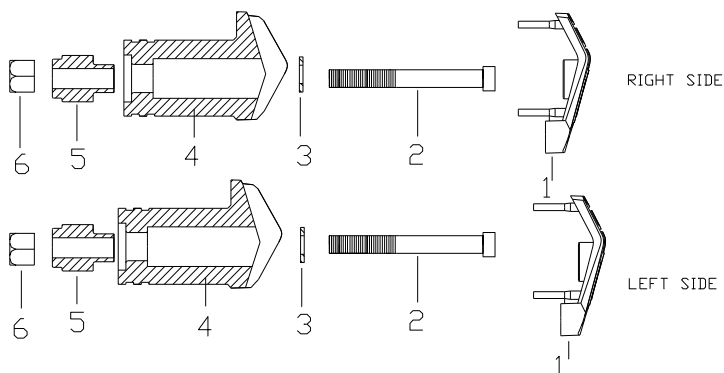
Dismount the fixation screws from the chassis to the engine in the support point marked on the picture (and the opposite side). Mount the crash pads on each own side as the figure shows, using the supplied screws. Once pressed, place the lids (1).



SUPPORT POINT

MATERIAL SUPPLIED

POSITION	DESCRIPTION	QUANTITY
1	Plastic lids	2
2	Tornillo M10/150x80 DIN912// M10/150x80 screw	2
3	Ø20ext.Ø10int x2 washer	2
4	Nylon protector	2
5	Aluminium metal arrowhead	2
6	M10/150 special nut din 982.8	2



If you are not a trained mechanic, please contact a specialist for assembling the crash pads. Motoplastic, S.A. takes no responsibility for damages caused by improper installation. The using of crash pads does not guarantee a full protection in case of accident.