

DIABOLO ADAPTABLE TO KAWASAKI MODELS

REF: 4033

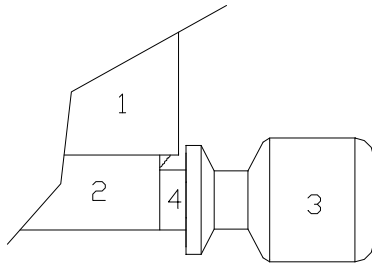


MOUNTING INSTRUCTIONS

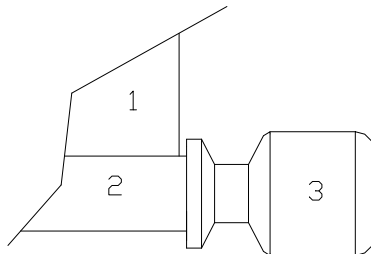
If the spool slider support (2) is hidden in the swing arm(1) use the metal arrowhead supplied. Otherwise, mount the spool slider without the metal arrowhead(option B).

Material supplied to mount it on the bike:

NUMBER	DESCRIPTION	QTT
3	<i>Spool slider</i>	2
4	<i>Aluminium metal arrowhead</i>	2
	<i>DIN912 M10/125x40 screw</i>	2



OPCION A



OPCION B