

YAMAHA TENERE 700 '19-

M O U N T I N G I N S T R U C T I O N S

REF 3806

BEACK



1 Person



15 min



EASY

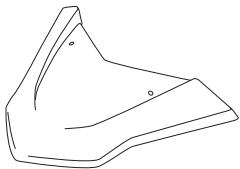
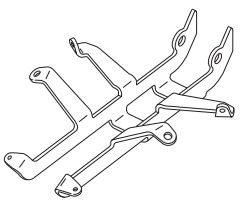


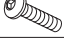


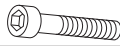



N° 12

ALLEN

N° 3
N° 5
N° 6



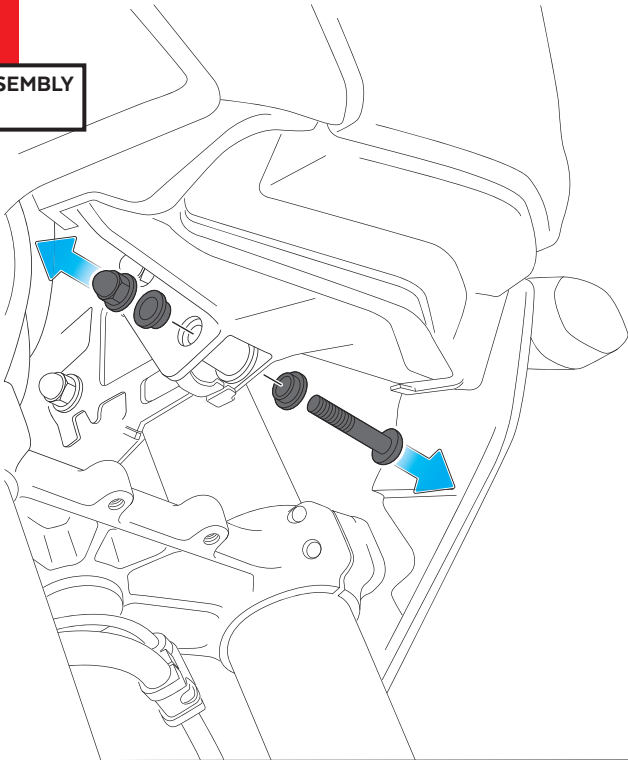
ID	PART	DESCRIPTION	QTY	REF
1		Beack	1	3806J
2		Support	1	SOPORIP6---3806
3		Ø9 x Ø6x8mm silentblock	2	AROPASACABLES-3
4		Ø12 x Ø6,8x7,3 bush with flange	2	CASQUI-1A---750
5		M5X16 Ø11 ISO 7380 Allen screw	2	TORNI-I7380-493
6		M5 ISO 7380 Screw Cap	2	TAPON-----85
7		Ø3,7-3,8 x 3,2mm bumper foot (supplied assembled)	4	TOPE--POF-40022
8		M8X55 DIN912 Screw	1	TORNI-D912--631
9		M8 Lock nut	1	TUEA-D985.8-M8-

YAMAHA TENERE 700 '19-

MOUNTING INSTRUCTIONS

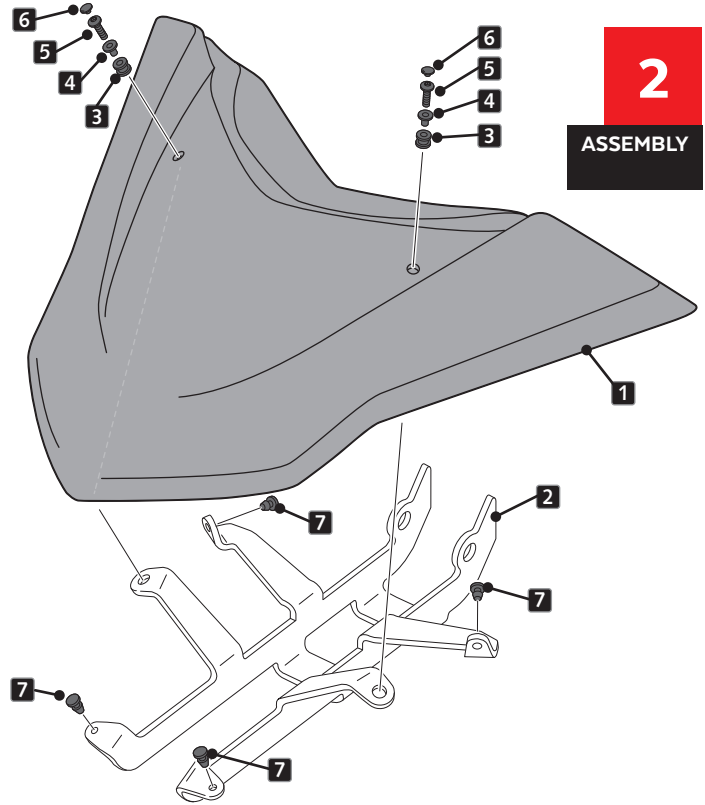
1

DISASSEMBLY



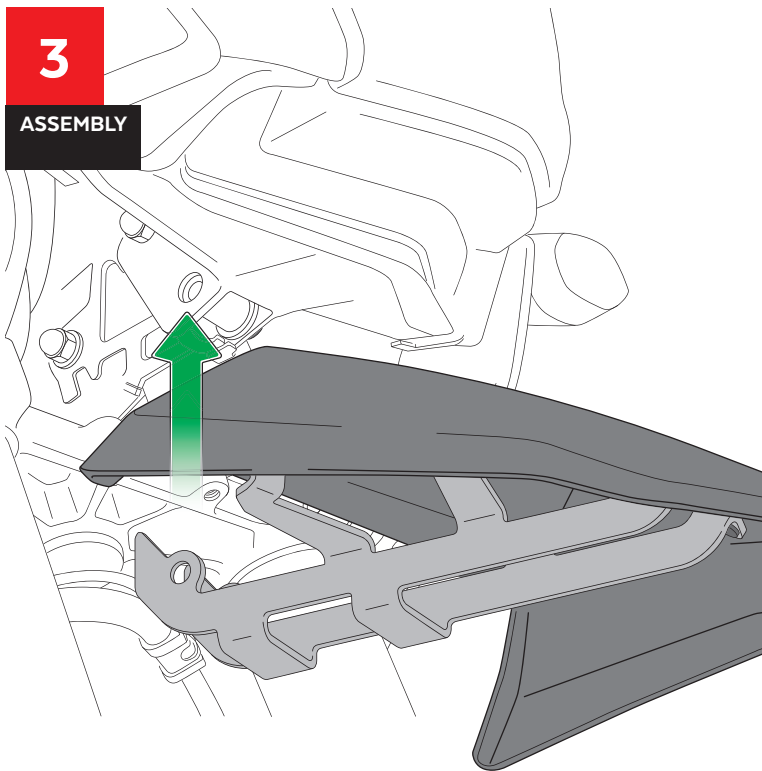
2

ASSEMBLY



3

ASSEMBLY



4

ASSEMBLY

