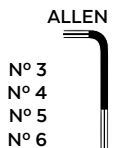
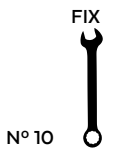


DUCATI DIAVEL 1260/S '19-

MOUNTING INSTRUCTIONS

REF 3773

SPORT WINDSHIELD "NG" ADJUSTABLE



ID.	PART	DESCRIPTION	QTY.	REF.:
1		SPORT screen	1	3773W/F/H/NM3
2		Upper Right support	1	SOPOR5P8-SR3775
3		Lower Left support	1	SOPOR5P8-SL3775
4		Fix support	1	SOPOR5P8-F-3775
5		Mobile right support	1	SOPOR5P8-R-3775
6		Mobile left support	1	SOPOR5P8-L-3775
7		Locking handle	1	POMO-DIAVEL-642
8		Ø8,5xØ17x1,5 rubber washer	2	ARAND-----638
9		Ø8,5xØ17x1 metallic washer	2	ARANDPD125-018
10		M5 ISO 7380 screw cap	4	TAPON-----85
11		M5x16 Ø11 ISO 7380 allen screw	4	TORNI-I7380-493
12		M5x1 nylon washer	4	ARNV00000000245
13		M5 silentblock	4	SILENBTM5-046/1
14		M6x10 Ø14 ISO 7380 allen screw	2	TORNI-I7380-402
15		Ø6xØ8x5,5 spacer	2	CASQUI-----641
16		Ø8x1 nylon washer	2	ARNV00000000265
17		M6 blind nut	6	TUERCA-----369
18		Ø8,5xØ13x22 spacer	2	CASQUI-----853
19		M8x60 DIN912 allen screw	2	TORNI-D912--607
20		Sticker (served mounted)	1	ADHESIV-----213

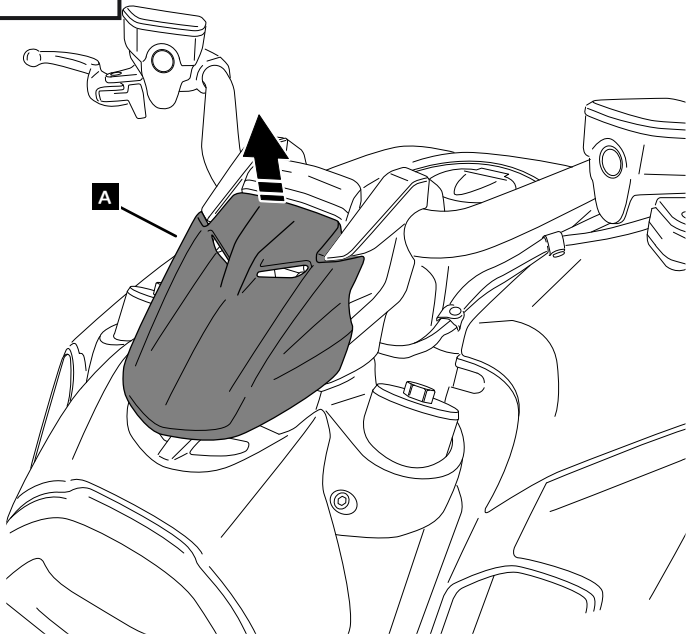
DUCATI DIAVEL 1260/S '19-

MOUNTING INSTRUCTIONS

1

A Original components

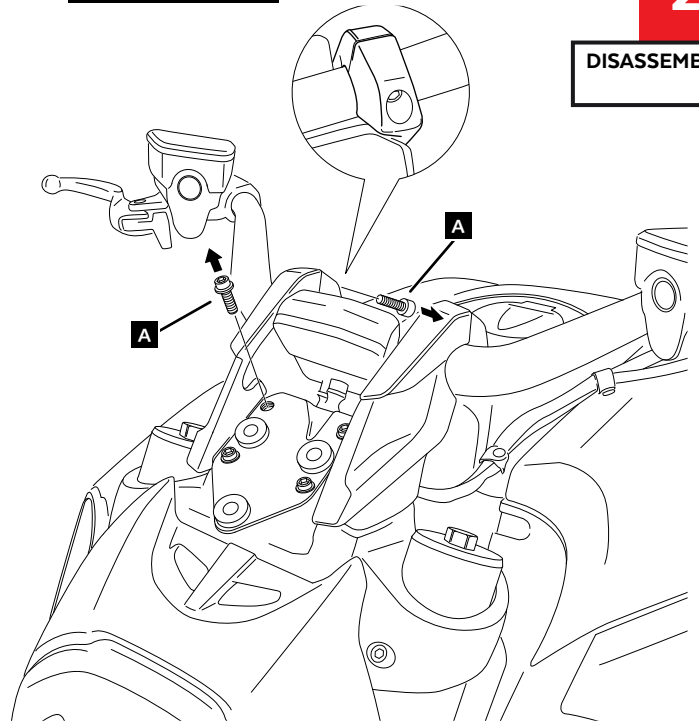
DISASSEMBLY



2

A Original screws

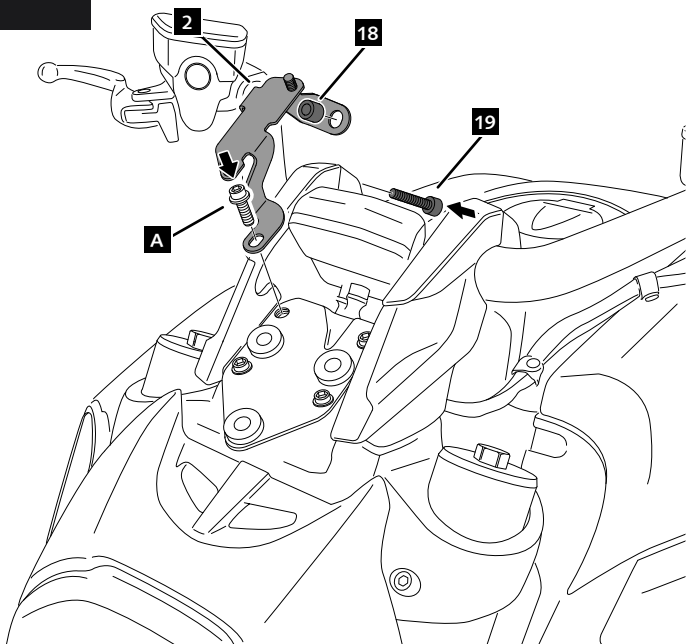
DISASSEMBLY



3

A Original screws

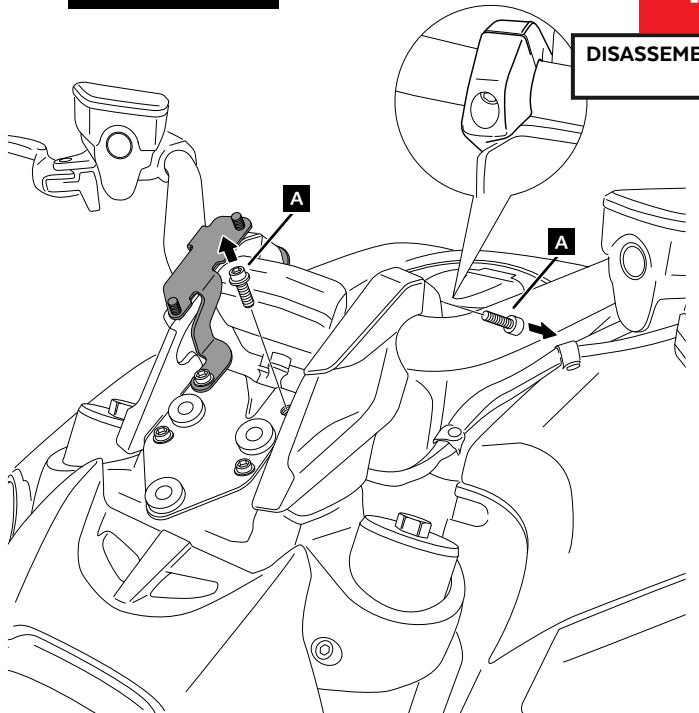
ASSEMBLY



4

A Original screws

DISASSEMBLY



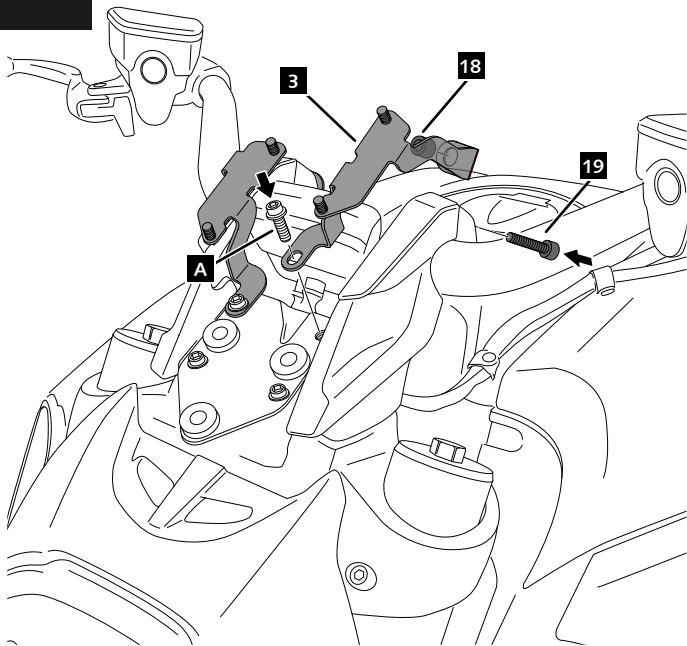
DUCATI DIAVEL 1260/S '19-

MOUNTING INSTRUCTIONS

5

ASSEMBLY

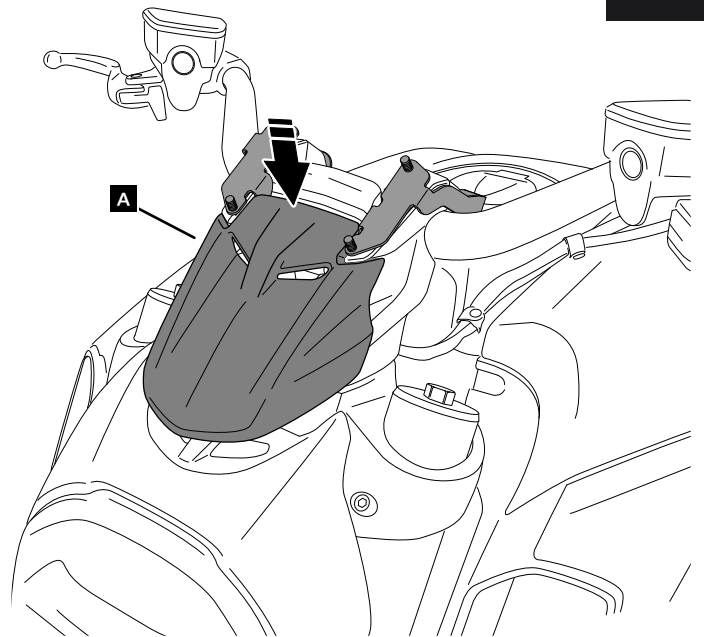
A Original screws



A Original components

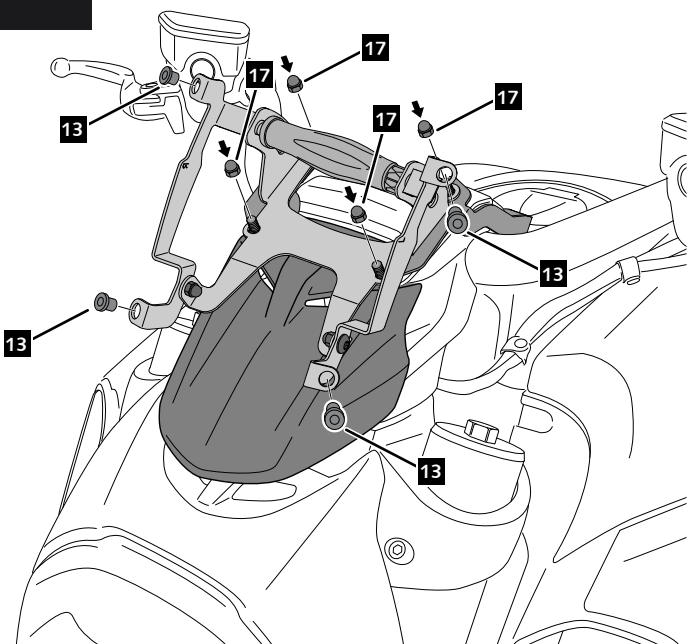
6

ASSEMBLY



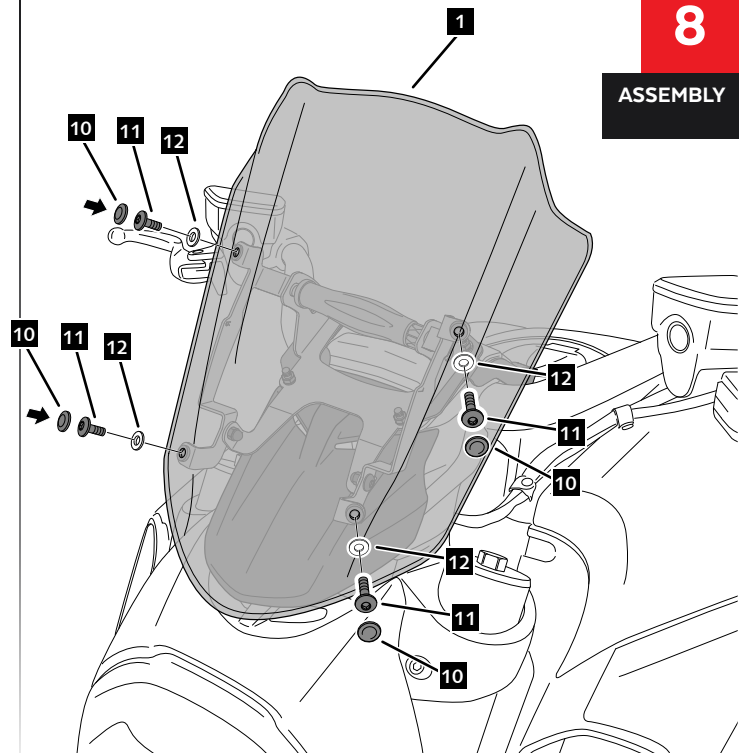
7

ASSEMBLY



8

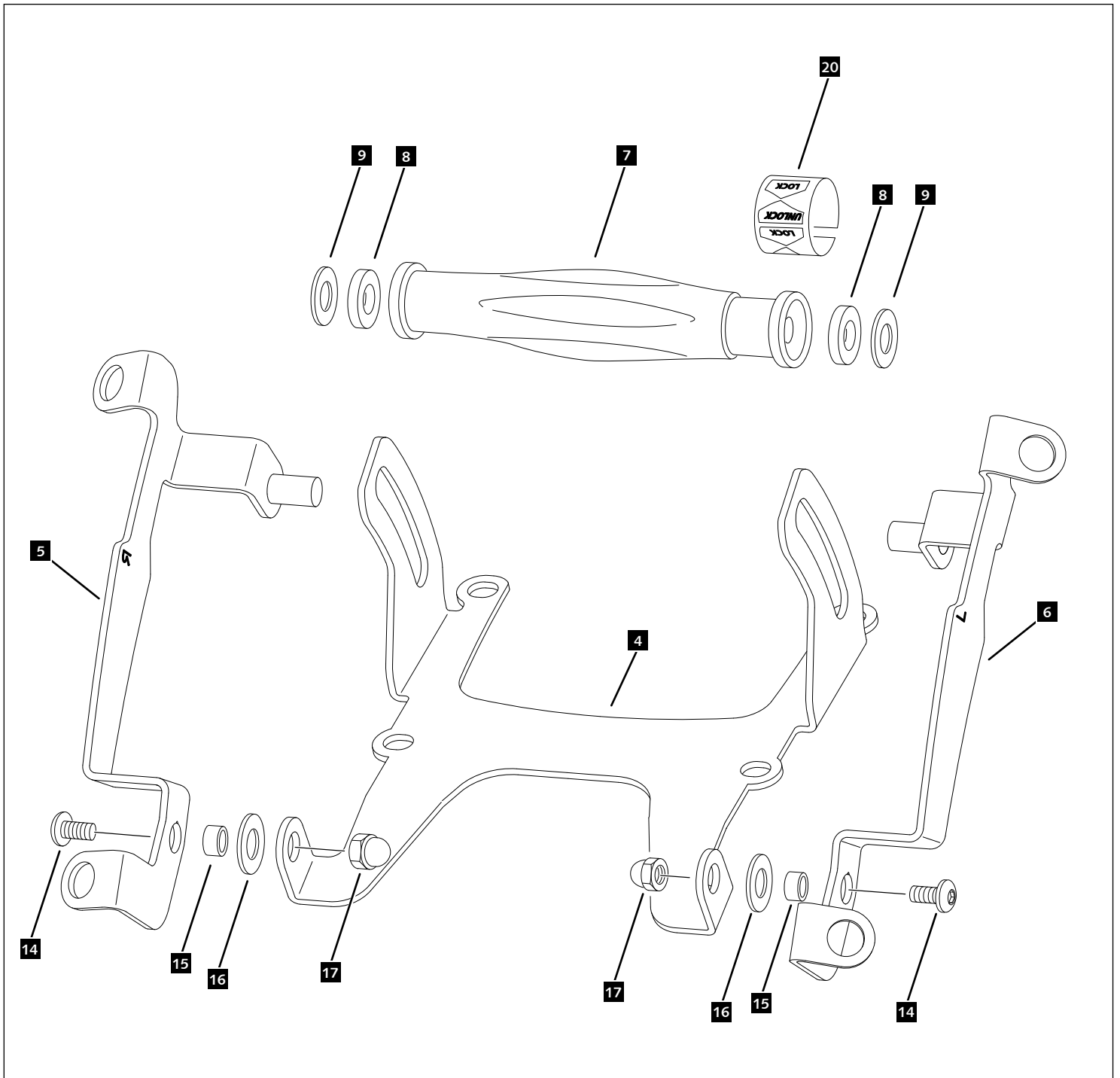
ASSEMBLY



DUCATI DIAVEL 1260/S '19-

MOUNTING INSTRUCTIONS

EXPLOTING



DUCATI DIAVEL 1260/S '19-

MOUNTING INSTRUCTIONS

REF 3775

TOURING WINDSHIELD "NG" ADJUSTABLE



1 Person



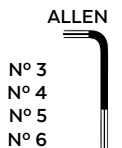
25 min



EASY



N° 10



N° 3
N° 4
N° 5
N° 6

ID.	PART	DESCRIPTION	QTY.	REF.:
1		TOURING screen	1	3775W/H/F/NM
2		Upper Right support	1	SOPOR5P8-SR3775
3		Lower Left support	1	SOPOR5P8-SL3775
4		Fix support	1	SOPOR5P8-F-3775
5		Mobile right support	1	SOPOR5P8-R-3775
6		Mobile left support	1	SOPOR5P8-L-3775
7		Locking handle	1	POMO-DIAVEL-642
8		Ø8,5xØ17x1,5 rubber washer	2	ARAND-----638
9		Ø8,5xØ17x1 metallic washer	2	ARANDPD125-018
10		M5 ISO 7380 screw cap	4	TAPON-----85
11		M5x16 Ø11 ISO 7380 allen screw	4	TORNI-I7380-493
12		M5x1 nylon washer	4	ARNV00000000245
13		M5 silentblock	4	SILENBTM5-046/1
14		M6x10 Ø14 ISO 7380 allen screw	2	TORNI-I7380-402
15		Ø6xØ8x5,5 spacer	2	CASQUI-----641
16		Ø8x1 nylon washer	2	ARNV00000000265
17		M6 blind nut	6	TUERCA-----369
18		Ø8,5xØ13x22 spacer	2	CASQUI-----853
19		M8x60 DIN912 allen screw	2	TORNI-D912--607
20		Sticker (served mounted)	1	ADHESIV-----213

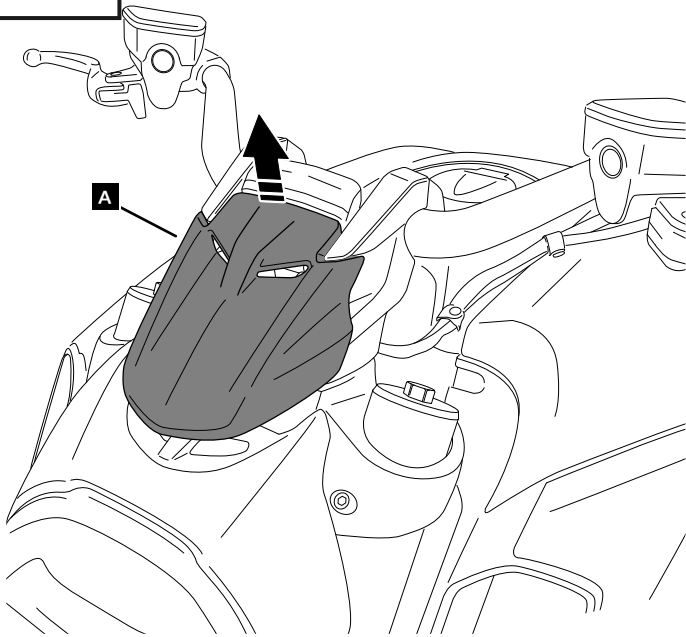
DUCATI DIAVEL 1260/S '19-

MOUNTING INSTRUCTIONS

1

A Original components

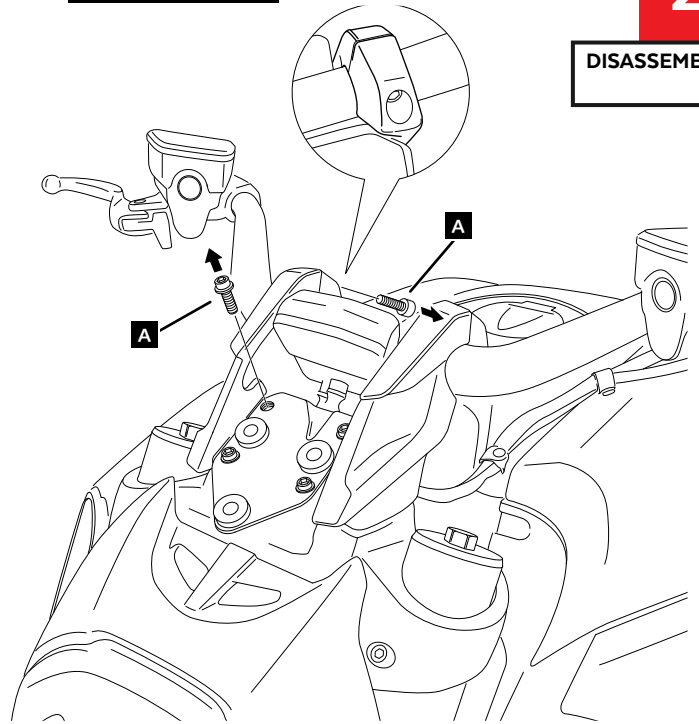
DISASSEMBLY



2

A Original screws

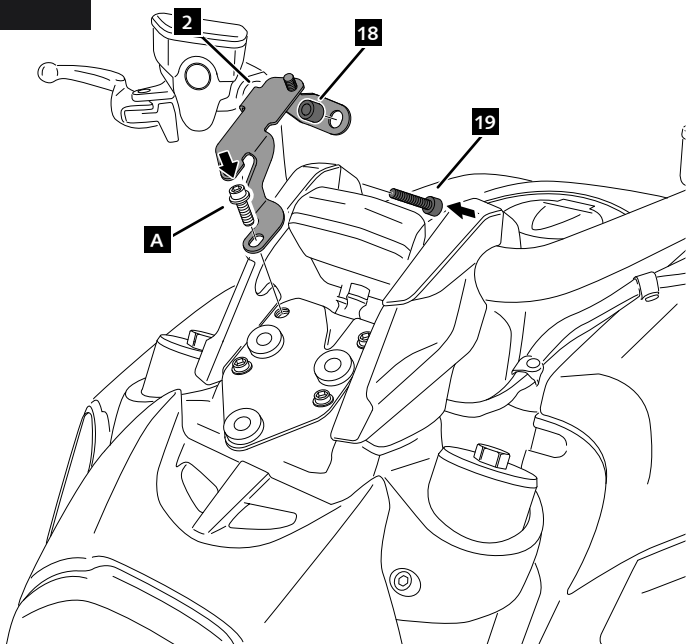
DISASSEMBLY



3

A Original screws

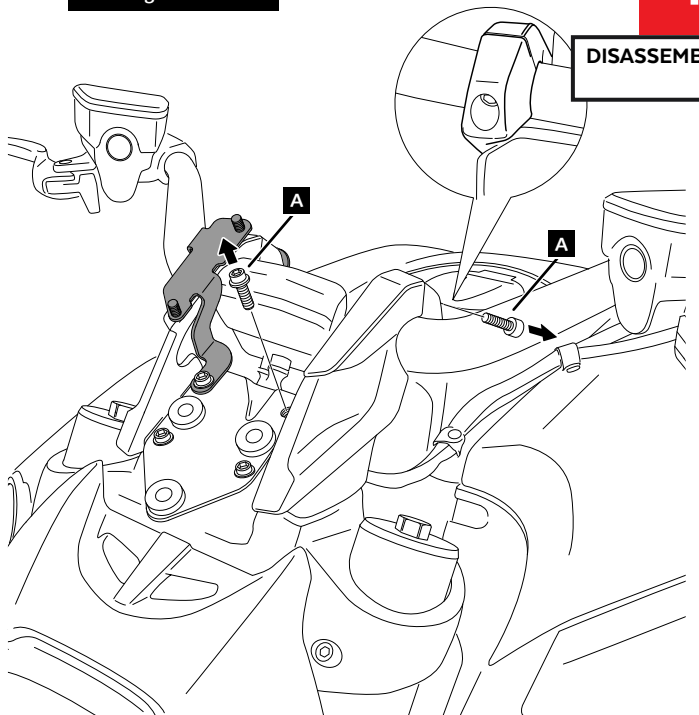
ASSEMBLY



4

A Original screws

DISASSEMBLY



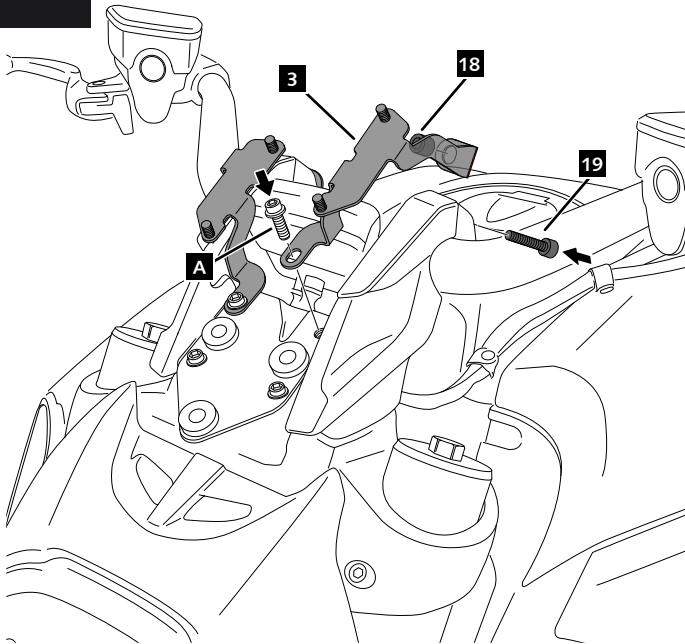
DUCATI DIAVEL 1260/S '19-

MOUNTING INSTRUCTIONS

5

ASSEMBLY

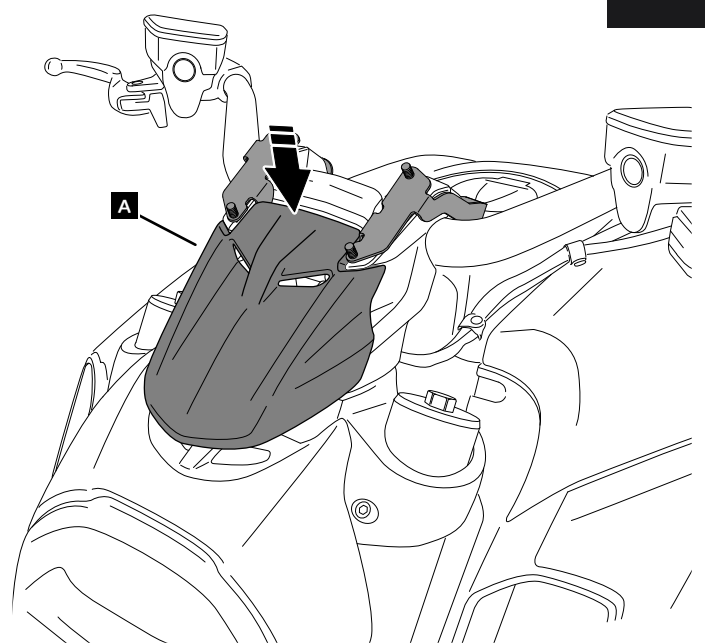
A Original screws



A Original components

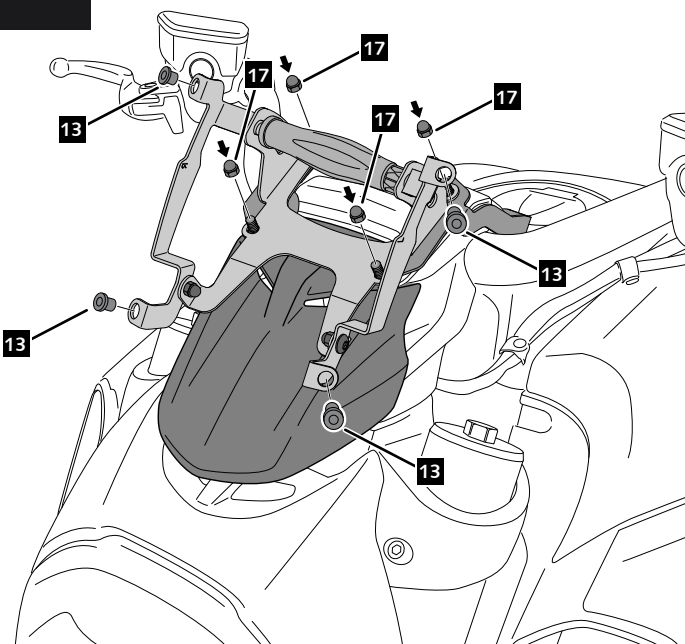
6

ASSEMBLY



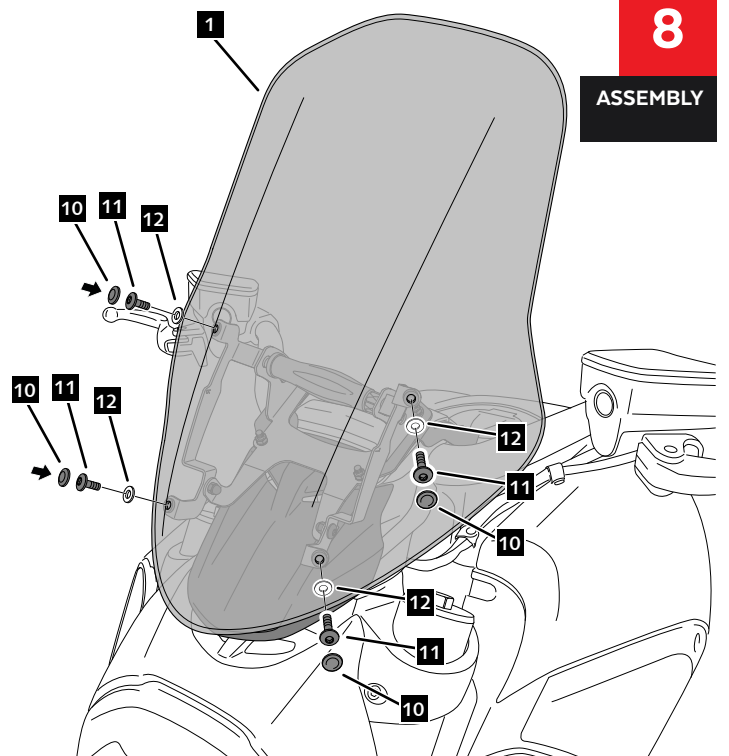
7

ASSEMBLY



8

ASSEMBLY



DUCATI DIAVEL 1260/S '19-

MOUNTING INSTRUCTIONS

EXPLOTING

