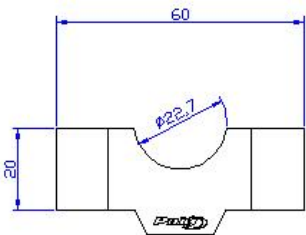
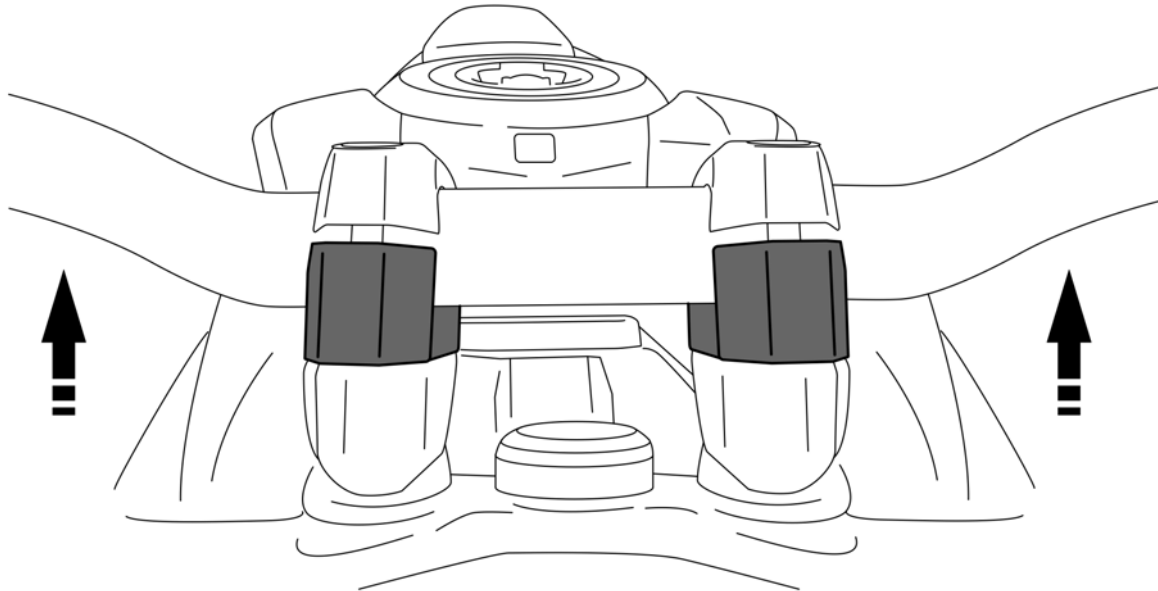
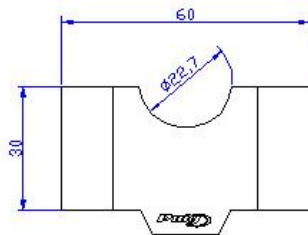


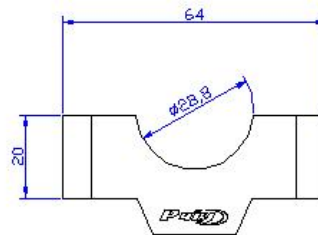
UNIVERSAL RISERS



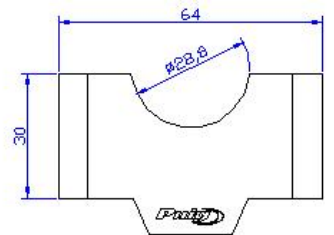
Ref. 3671P



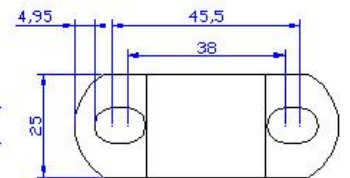
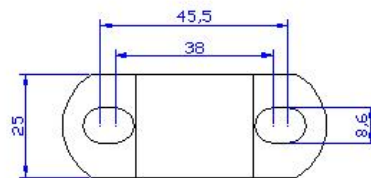
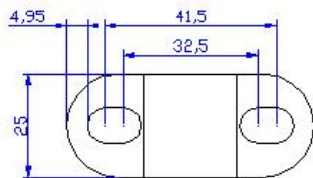
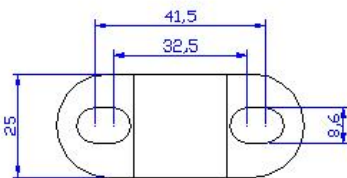
Ref. 3672P



Ref. 3740P



Ref. 3741P



REF.:	SCREWS	QTY.
3671P	M8x45 + M8x55 screws	4+4
3672P	M8x55 + M8x65 screws	4+4
3740P	M8x45 + M8x55 screws	4+4
3741P	M8x55 + M8x65 screws	4+4

NOTE₁: To verify the screws, add the elevator height to the original screw (20 or 30)

NOTE₂: When mounting the 30mm lift it is very possible that the wiring of the motorcycle is short, so it must be replaced.