

YAMAHA TENERÉ 700 '19-

M O U N T I N G I N S T R U C T I O N S

REF 3730

REAR MUDGUARD



1 Person



20 min



EASY



REAR MUDGUARD NOT COMPATIBLE
WITH TENERÉ 700 RALLY

ALLEN
N° 3
N° 4

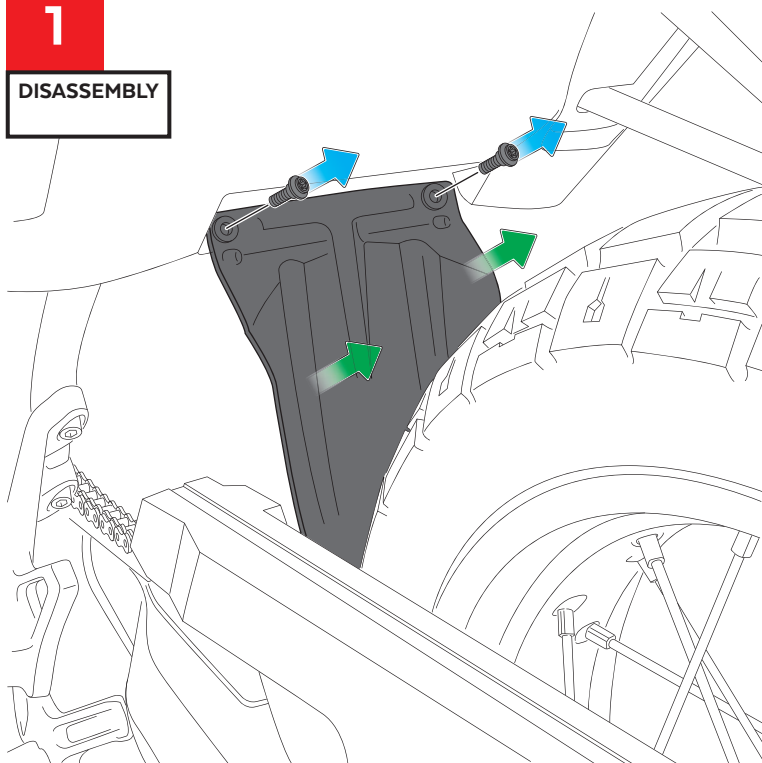
ID	PART	DESCRIPTION	QTY	REF
1		Mudguard	1	3730J
2		Metal support	1	SOPORIP2-L-3730
3		Lock nut M6 (supplied assembled)	2	TUERCAJFM6--716
4		M6x20 Ø14 ISO7380 Allen screw	2	TORNI-I7380-404
5		M5x20 Ø11 ISO7380 Allen screw	2	TORNIAI7380-387
6		M5 screw cap	2	TAPON-----85
7		M6 screw cap	2	TAPON-----86
8		Ø18x Ø9 xØ11 x8 silentblock	2	SILENBGONE--064
9		Ø15 xØ9 x7,5 bush with flange	2	CASQUI-1A---324
10		Ø9x Ø6 x8 silentblock	2	AROPASACABLES-3
11		Ø12 xØ6,8 x7,3 bush with flange	2	CASQUI-1A---750

YAMAHA TENERÉ 700 '19-

MOUNTING INSTRUCTIONS

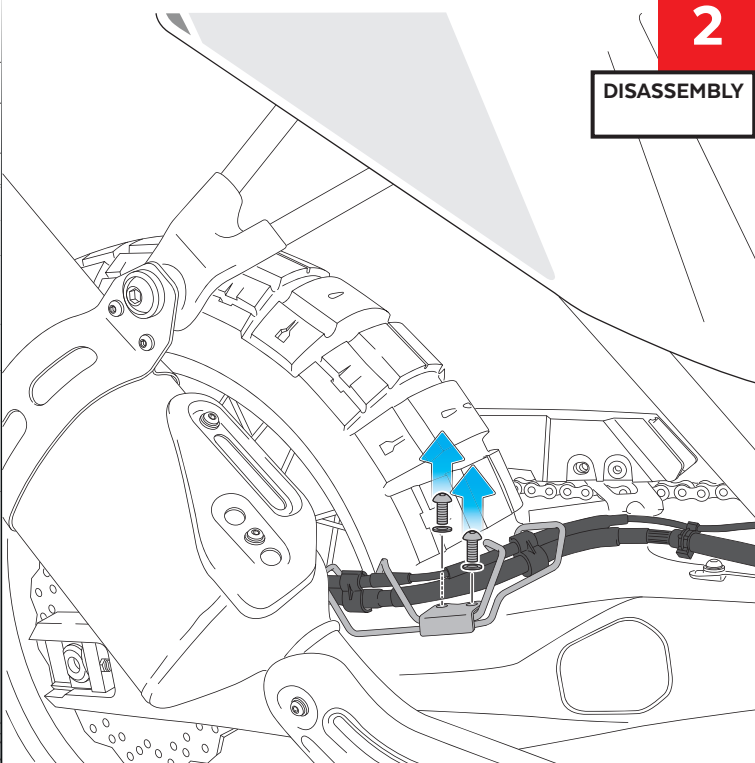
1

DISASSEMBLY



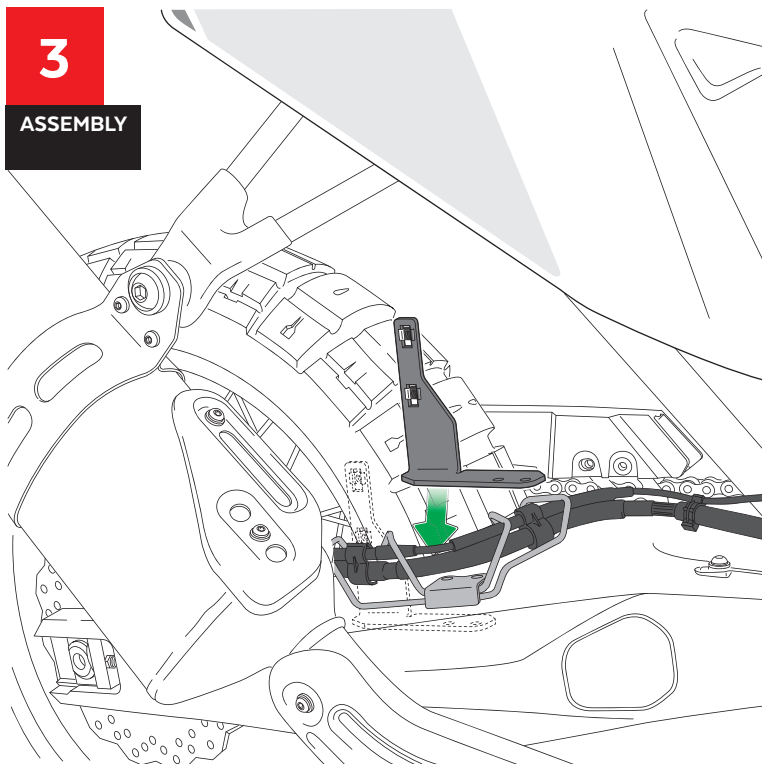
2

DISASSEMBLY



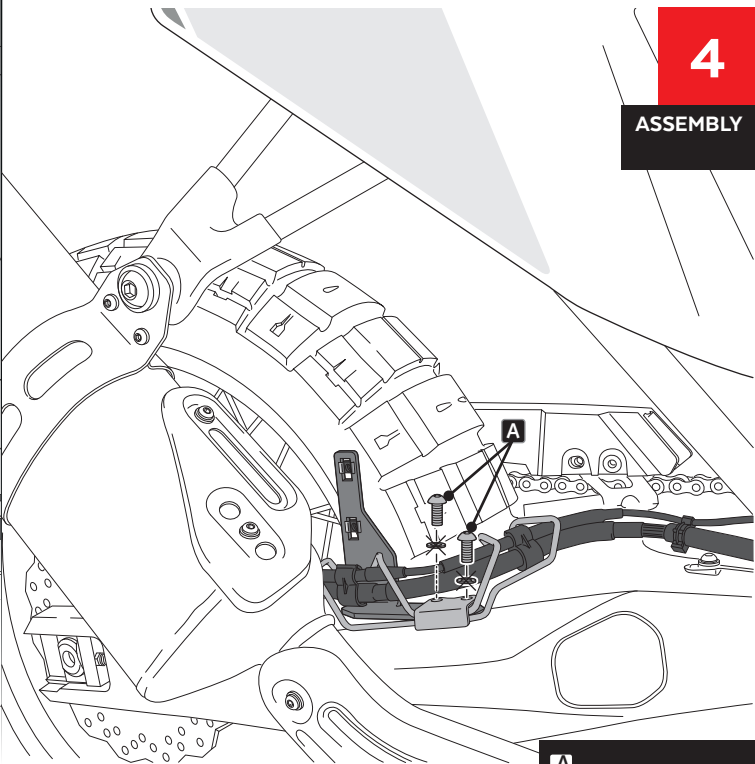
3

ASSEMBLY



4

ASSEMBLY



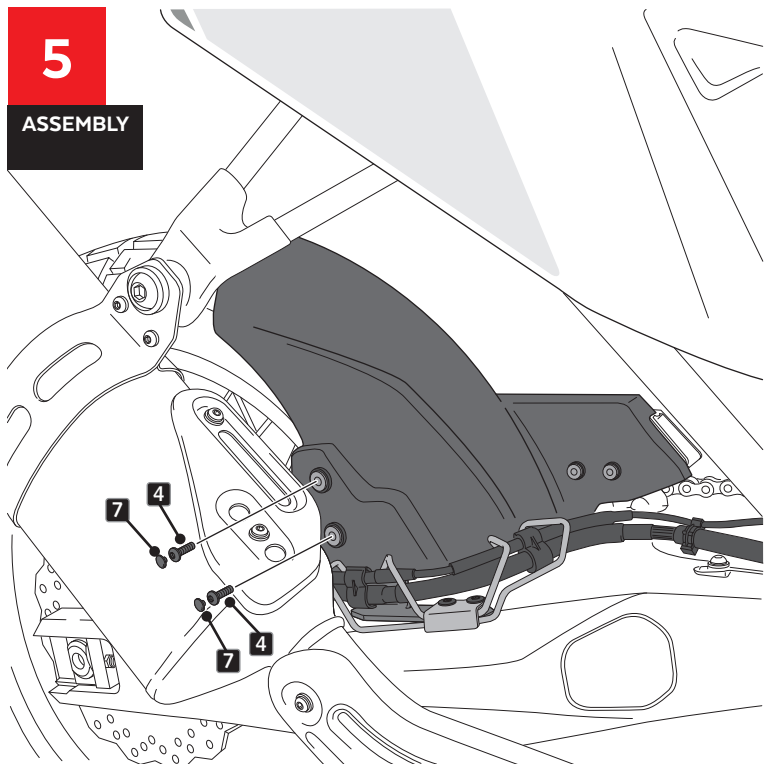
A ORIGINAL PART

YAMAHA TENERÉ 700 '19-

MOUNTING INSTRUCTIONS

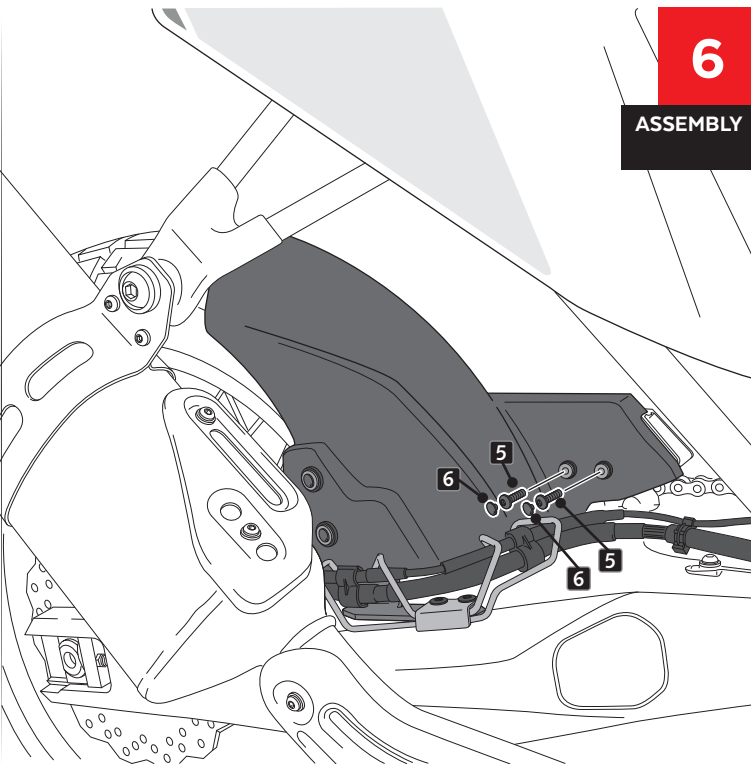
5

ASSEMBLY



6

ASSEMBLY



EXPLOTING

