

SUZUKI KATANA '19-

M O U N T I N G I N S T R U C T I O N S

REF 3637

TOURING SCREEN



1 Person



15 min

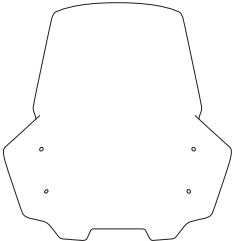









EASY



ALLEN
N° 3
N° 4



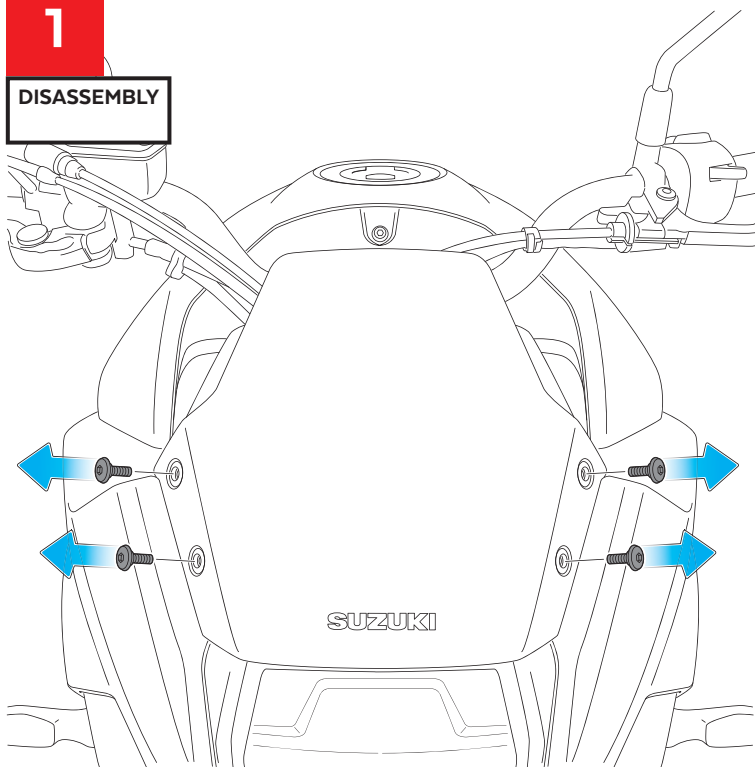
ID	PART	DESCRIPTION	QTY	REF
1		Touring screen	1	3637F/H/N/R/W/ HM3
2		Right metal support (R)	1	SOPOR2P4-R-3637
3		Left metal support (L)	1	SOPOR2P4-L-3637
4		Ø8,5 x Ø14 x 3,5 bush	4	CASQUI-----182
5		M5 silentblock	4	SILENBTM5-046/1
6		M5x16 Ø11 ISO 7380 Allen screw	8	TORNI-I7380-493
7		M5x1 Nylon washer	4	ARNV00000000245
8		M5 ISO 7380 Screw cap	4	TAPON-----85

SUZUKI KATANA '19-

MOUNTING INSTRUCTIONS

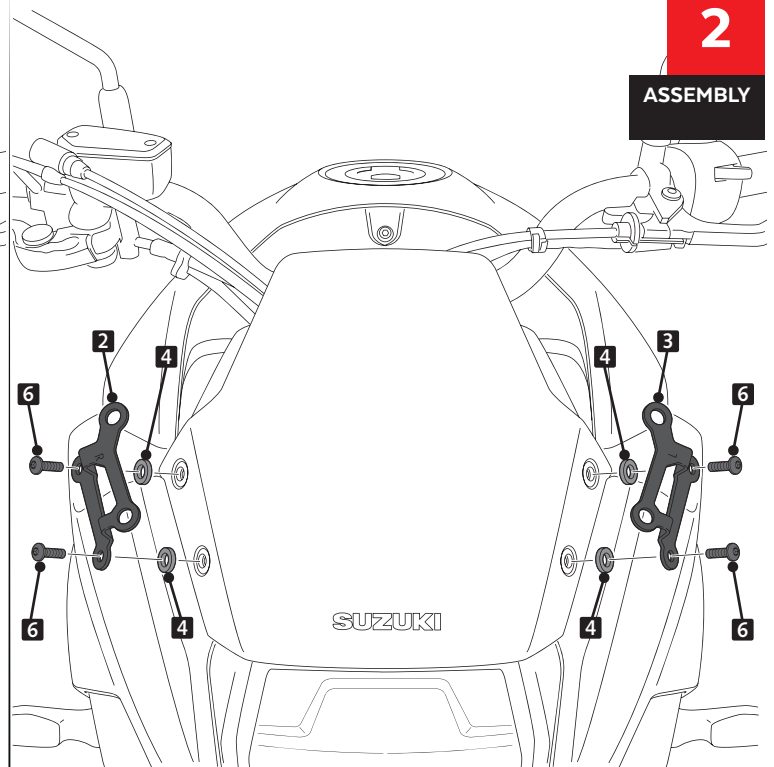
1

DISASSEMBLY



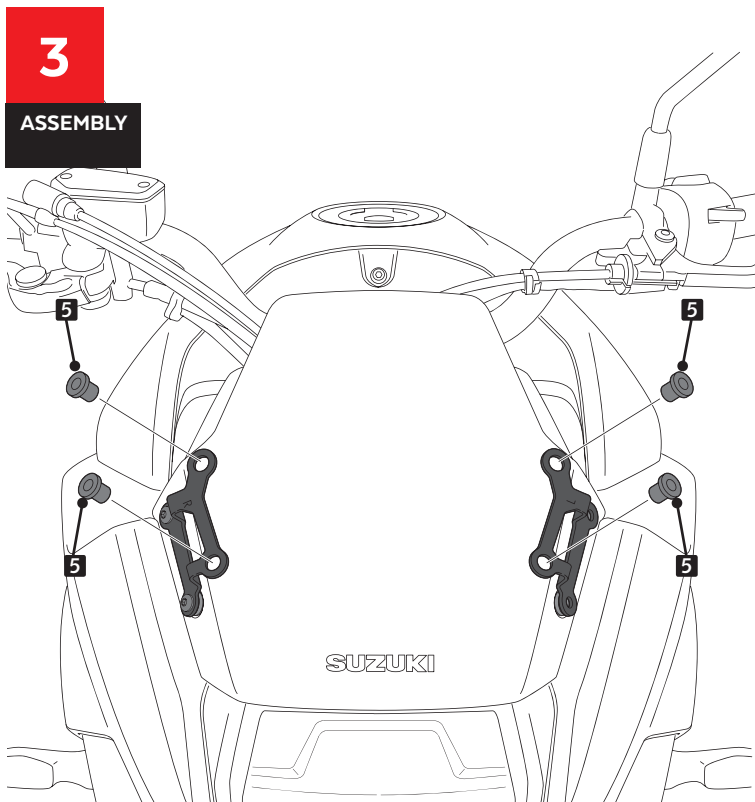
2

ASSEMBLY



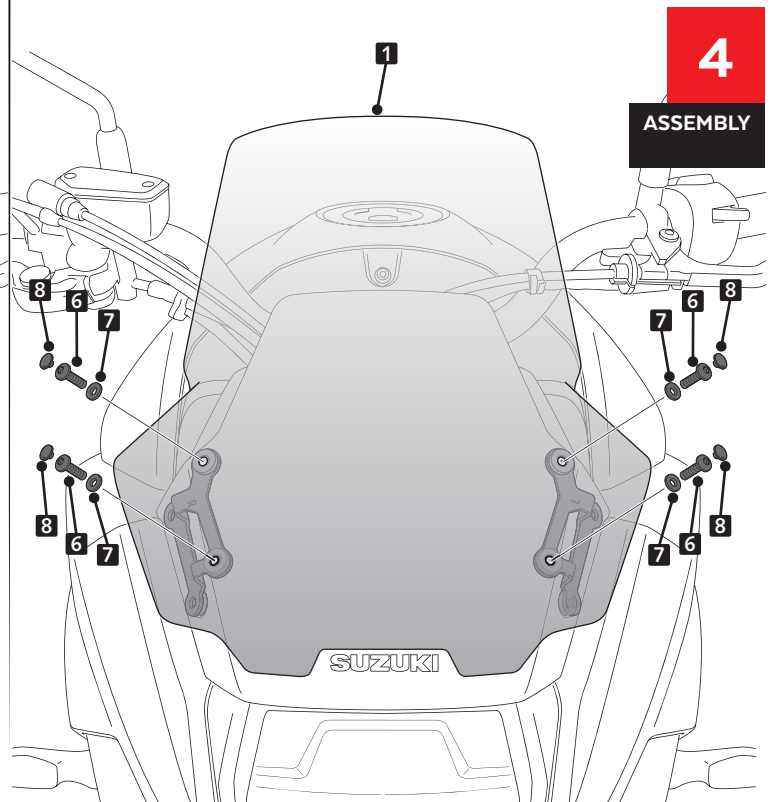
3

ASSEMBLY



4

ASSEMBLY



MULTI-ADJUSTABLE VISOR

TYPE WINDSCREEN **A**



TYPE WINDSCREEN **B**



TYPE WINDSCREEN **C**



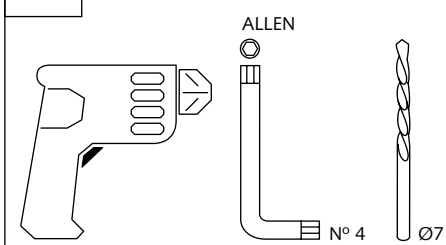
Ref.: 6007

Ref.: 5852

Ref.: 5853

Smoke

Clear



1 persona
1 person



15 min

Fácil - Easy

Media-Intermediate

Difícil-Difficult

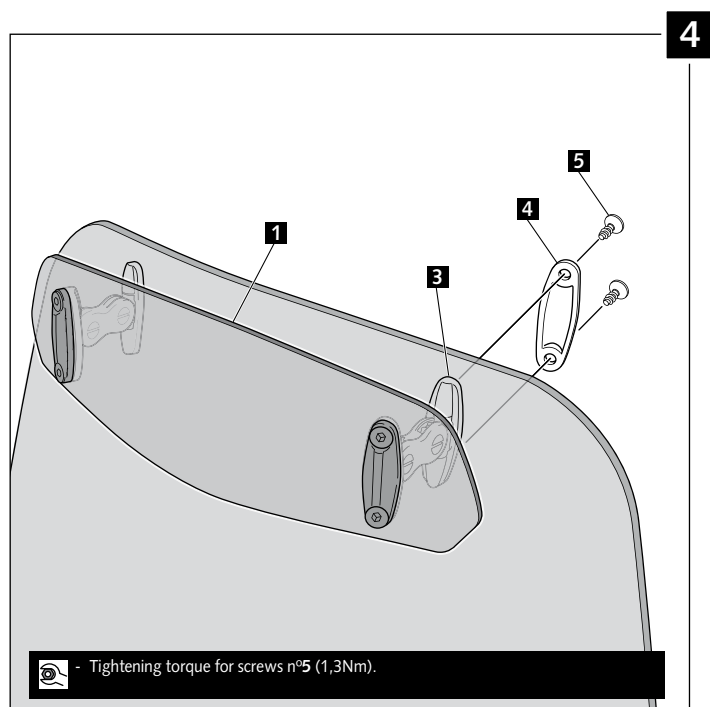
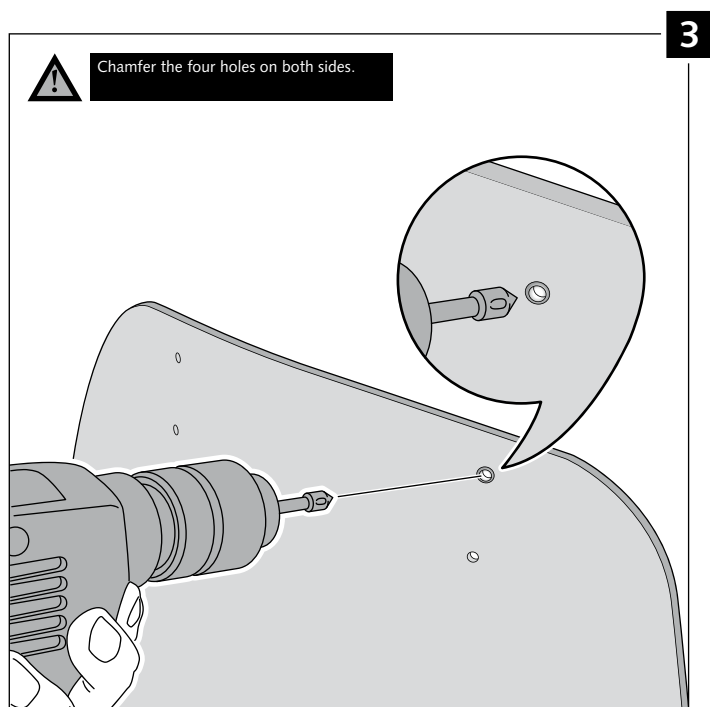
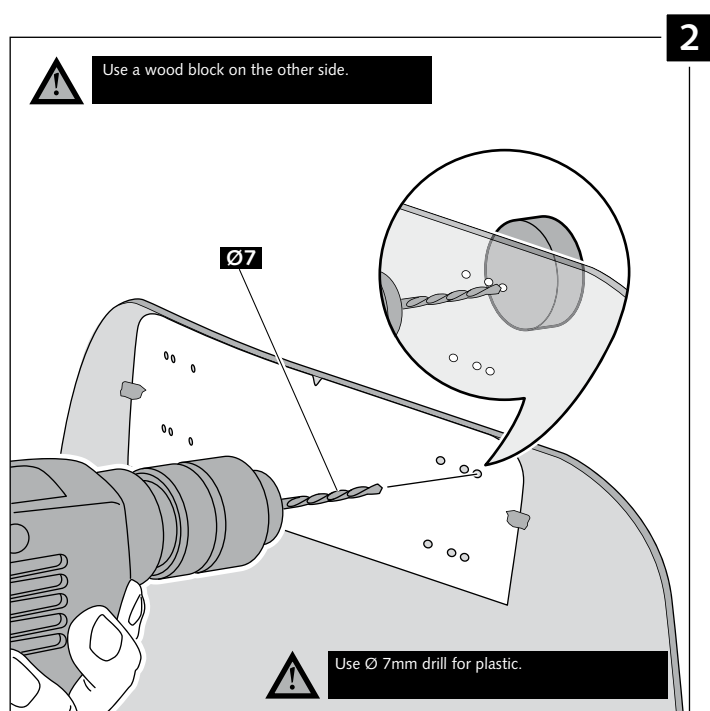
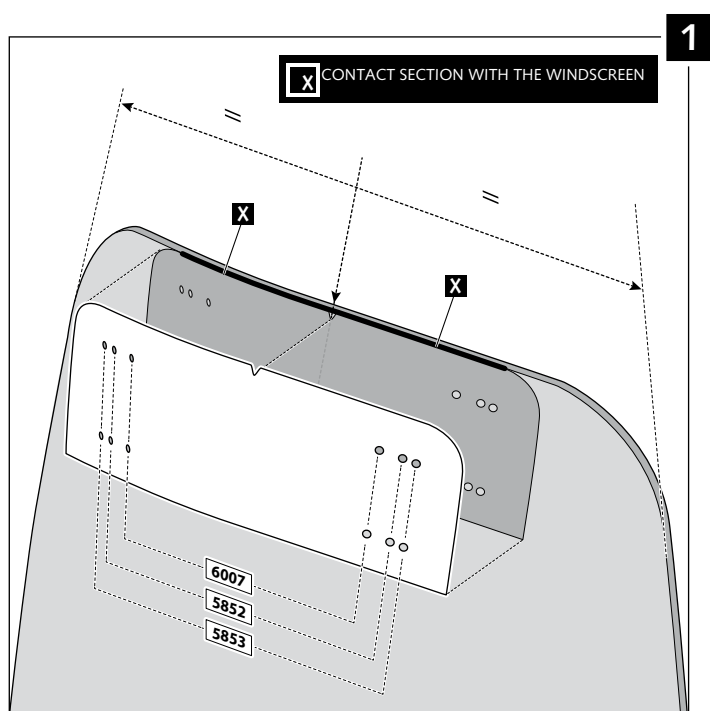
Note:
If the visor is supplied along with the windscreen, the windscreen will come factory-drilled so no drilling is necessary.

ID.	PART	DESCRIPTION	QTY.
1		Visor	1
2		Template	1
3		Multi-adjustable mechanism	2
4		Cap	4
5		Plastic thread fastener M6x12	8

MULTI-ADJUSTABLE VISOR

MOUNTING INSTRUCTIONS

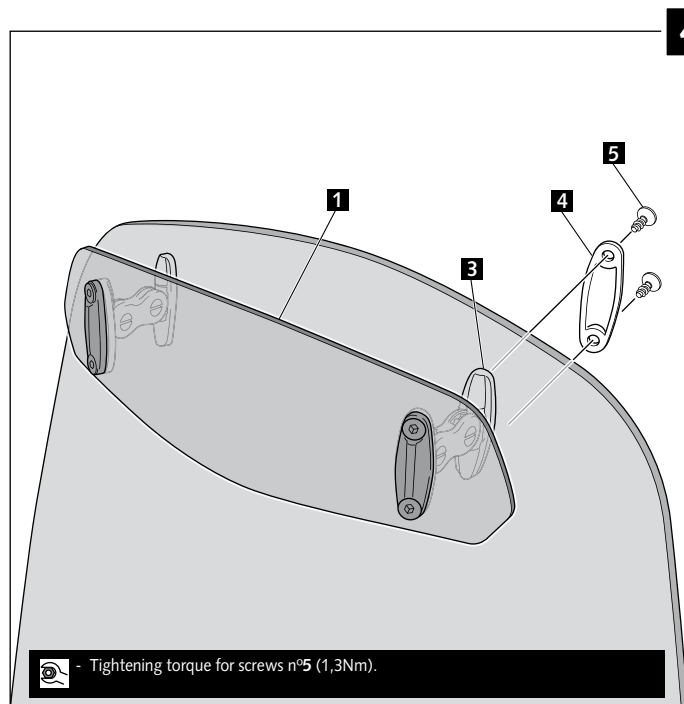
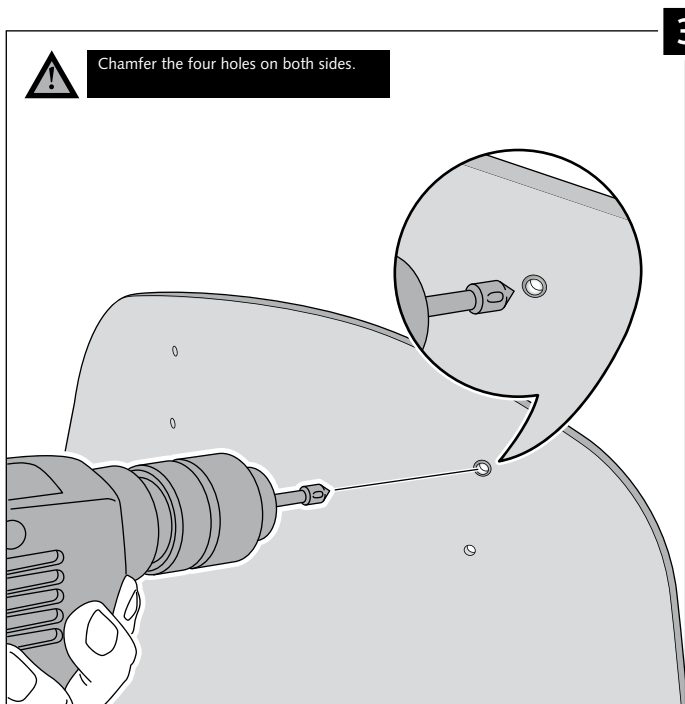
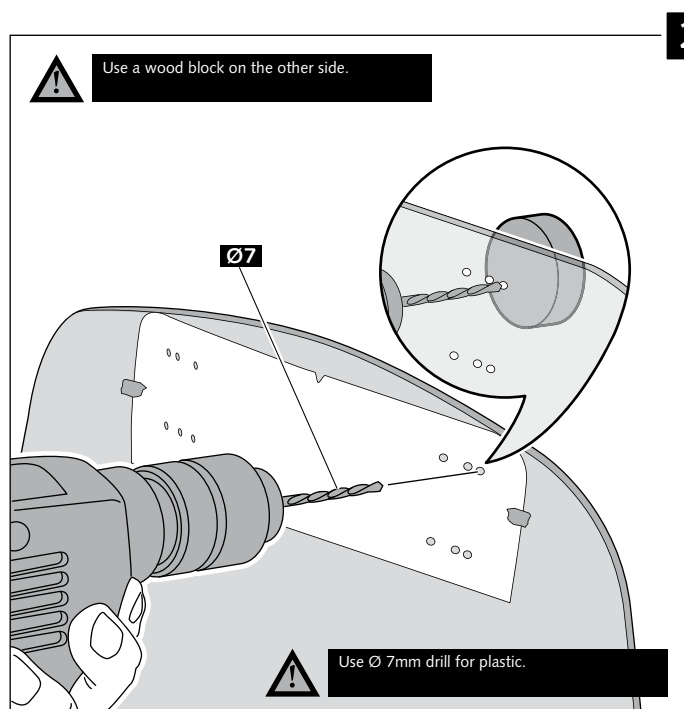
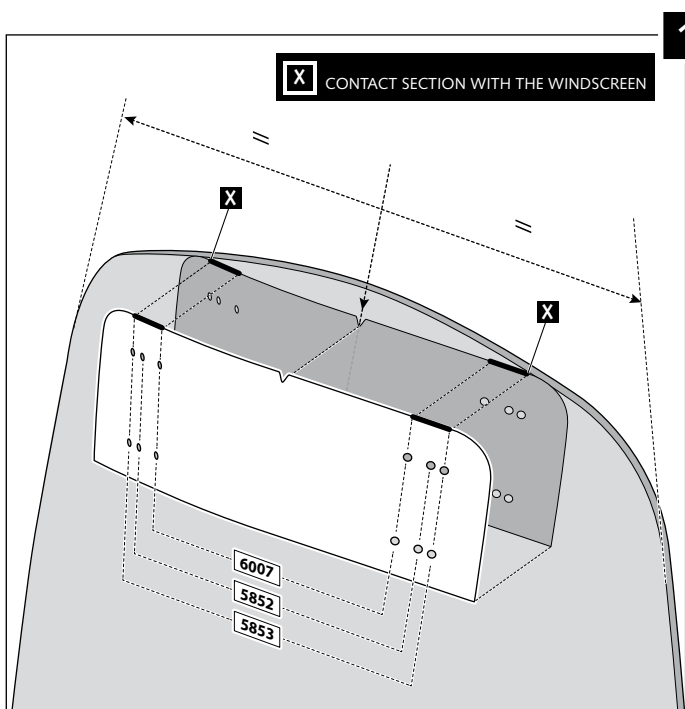
TYPE A



MULTI-ADJUSTABLE VISOR

MOUNTING INSTRUCTIONS

TYPE B



MULTI-ADJUSTABLE VISOR

MOUNTING INSTRUCTIONS

TYPE C

