

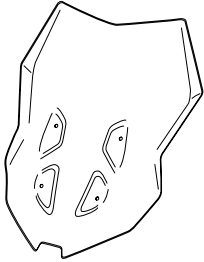


# KTM 1290 SUPERDUKE GT '19-

## M O U N T I N G I N S T R U C T I O N S

REF 3564

TOURING SCREEN



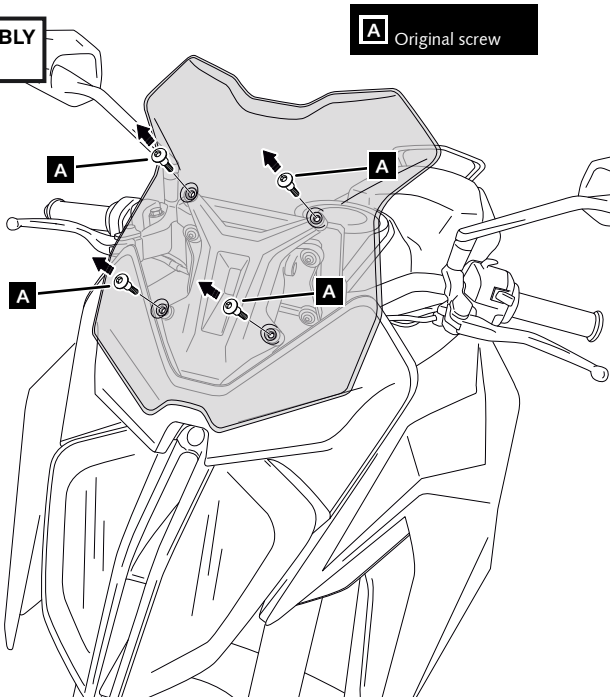
ID.	PART	DESCRIPTION	QTY.	REF.:
1		Touring screen	1	3564F/W/H/NM3
2		M5x9 special screw Hexagonal Lenght 14	4	TORNI-EC----597
3		Ø9xØ6x8mm silentblock	4	AROPASACABLES-3
4		Ø12xØ6,8x7,3 bush with flange	4	CASQUI-1A---750
5		M5x16 Ø11 ISO 7380 allen screw	4	TORNI-I7380-493
6		M5 ISO 7380 cap	4	TAPON-----85

# KTM 1290 SUPERDUKE GT '19-

## MOUNTING INSTRUCTIONS

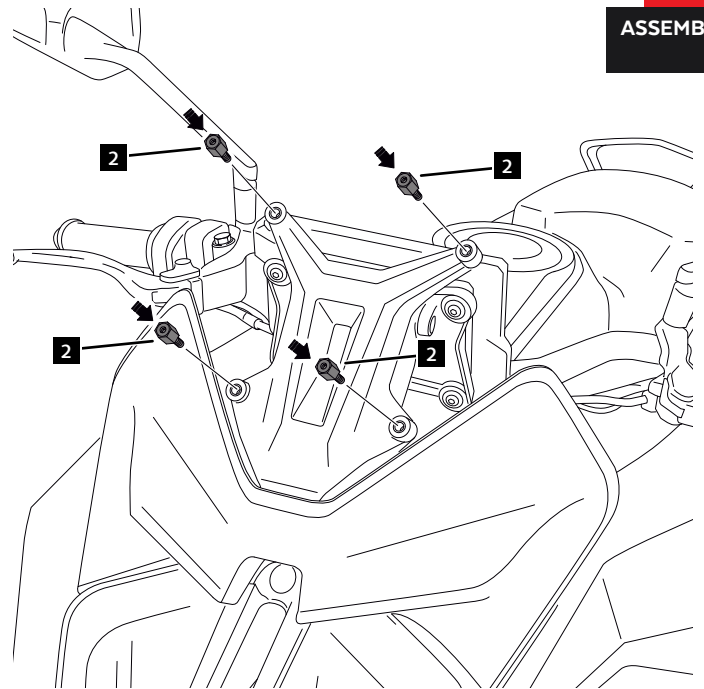
**1**

DISASSEMBLY



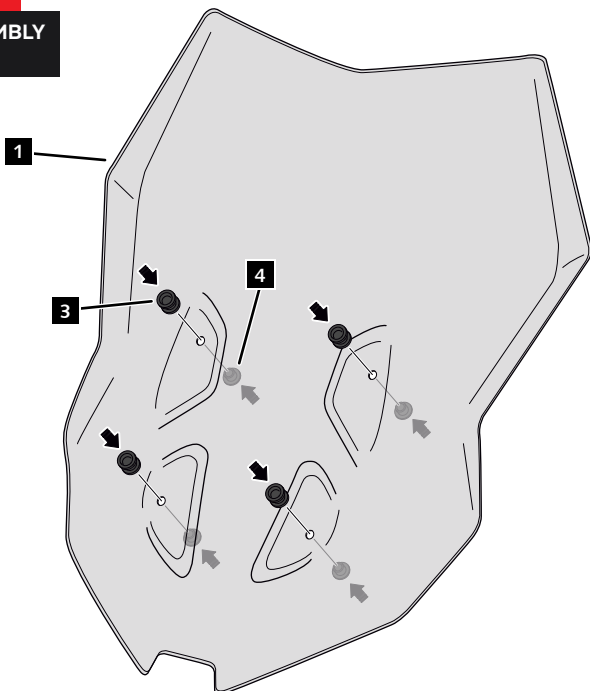
**2**

ASSEMBLY



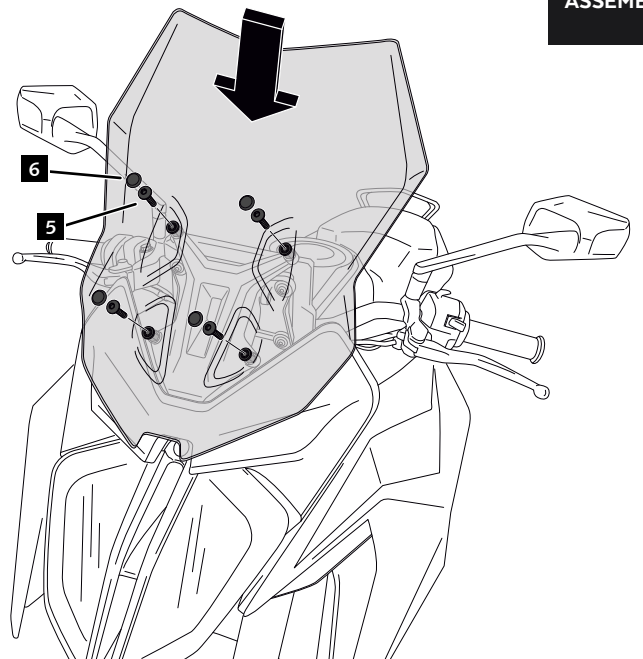
**3**

ASSEMBLY



**4**

ASSEMBLY



## MULTI-ADJUSTABLE VISOR

TYPE WINDSCREEN **A**



TYPE WINDSCREEN **B**



TYPE WINDSCREEN **C**



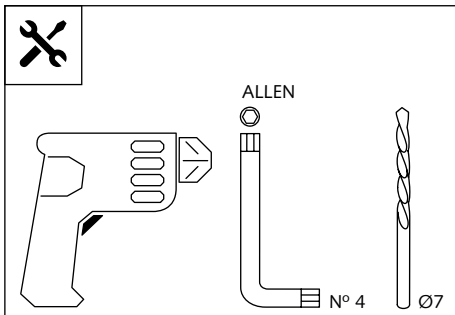
Ref.: 6007

Ref.: 5852

Ref.: 5853

Smoke

Clear



1 person



15 min

Easy

Intermedia

Difficult

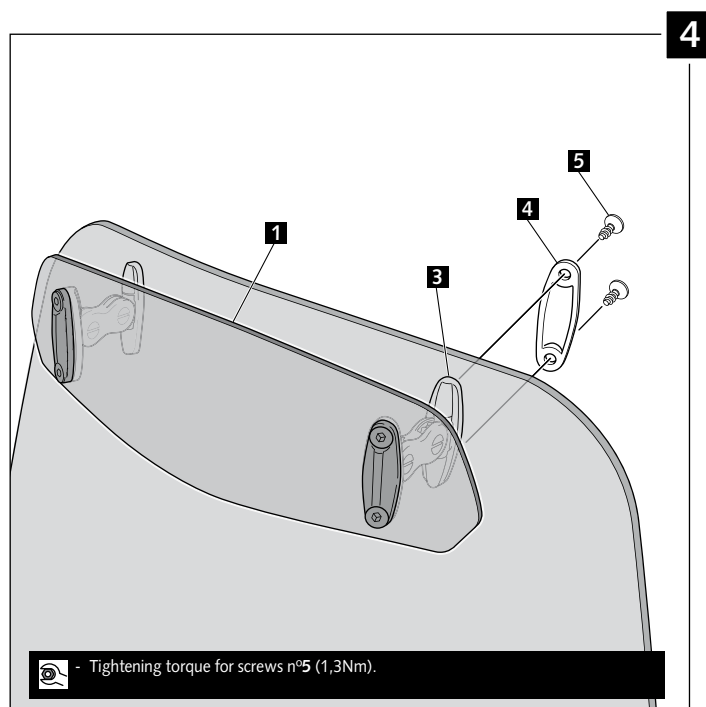
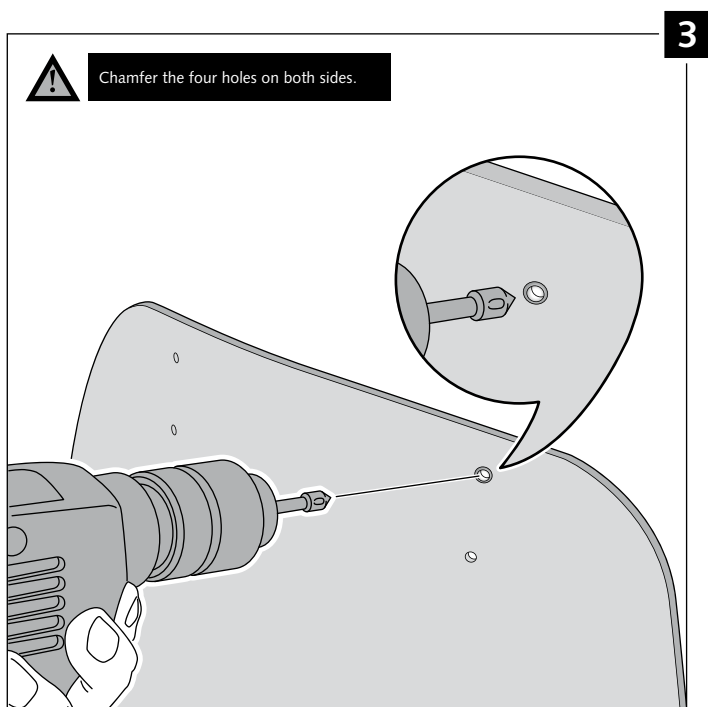
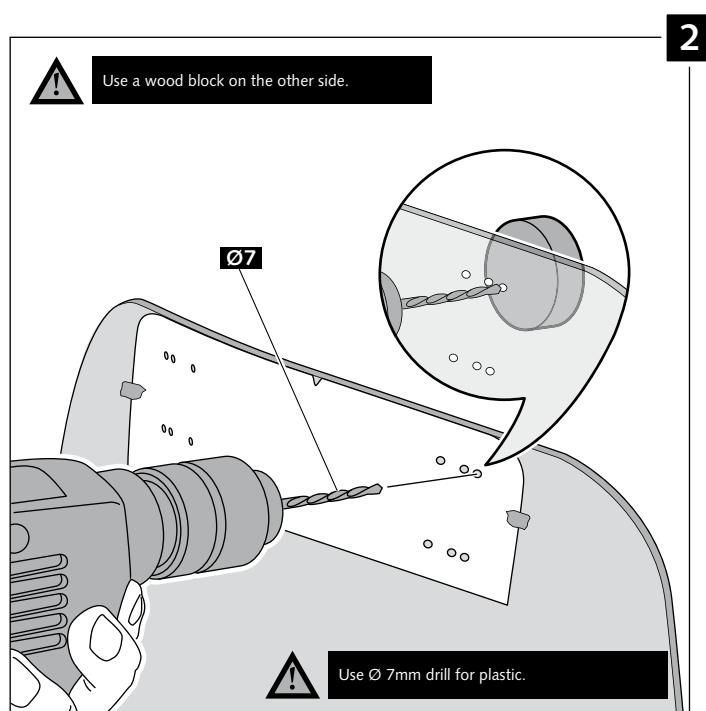
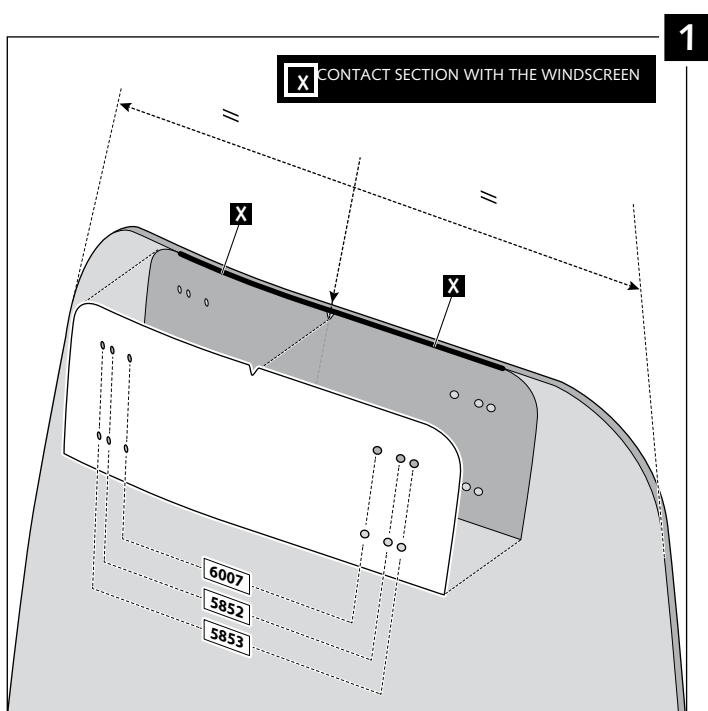
Note:  
If the visor is supplied along with the windscreen, the windscreen will come factory-drilled so no drilling is necessary.

ID.	PART	DESCRIPTION	QTY.
1		Visor	1
2		Template	1
3		Multi-adjustable mechanism	2
4		Cap	4
5		Plastic thread fastener M6x12	8

# MULTI-ADJUSTABLE VISOR

## MOUNTING INSTRUCTIONS

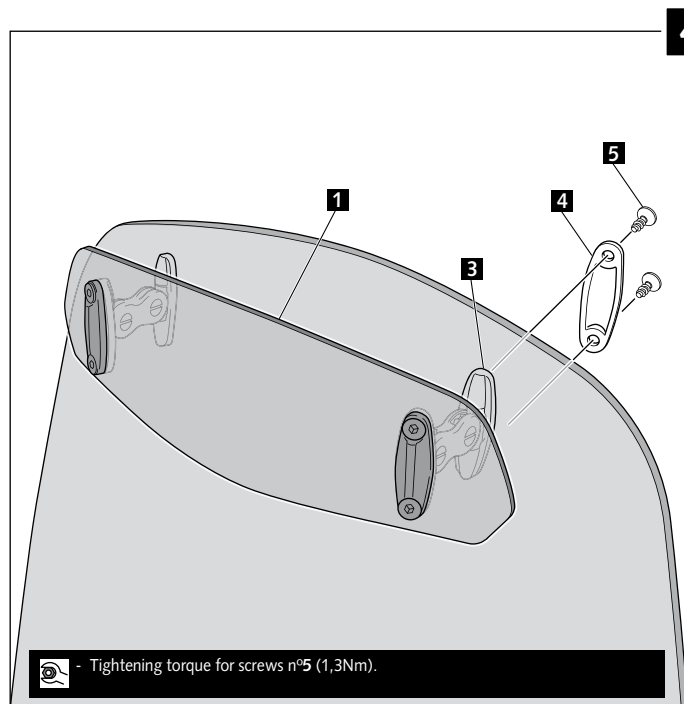
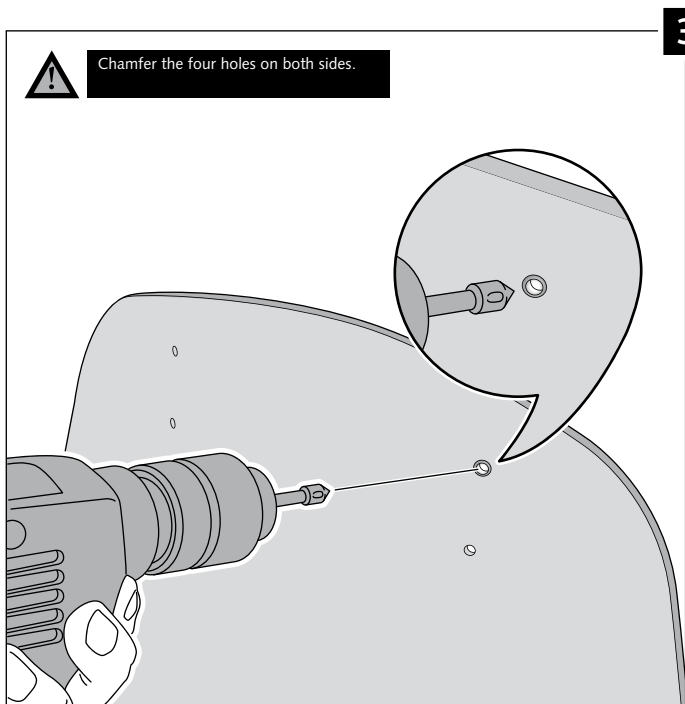
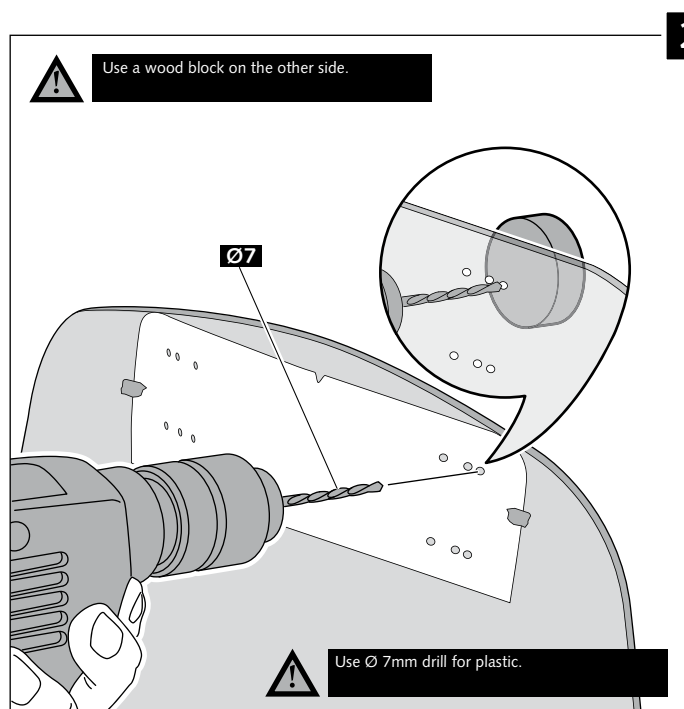
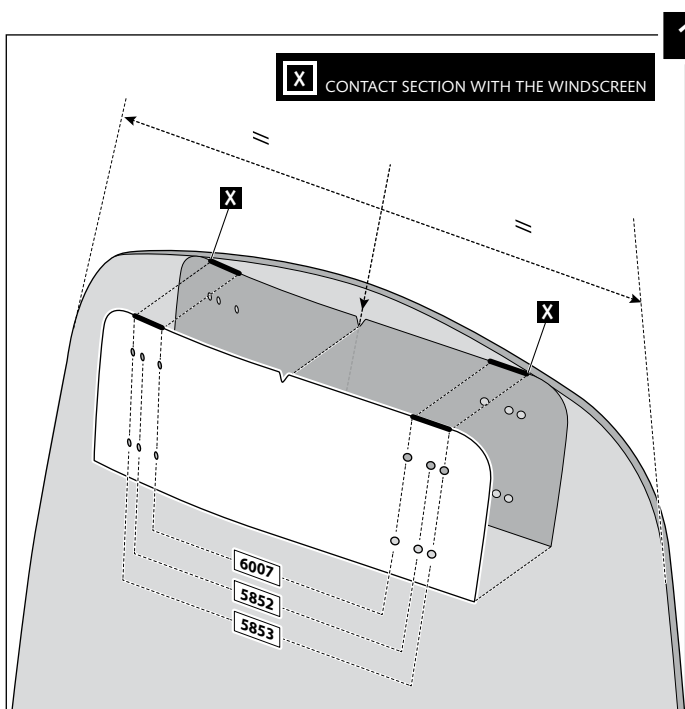
### TYPE A



# MULTI-ADJUSTABLE VISOR

## MOUNTING INSTRUCTIONS

### TYPE B





# MULTI-ADJUSTABLE VISOR

## MOUNTING INSTRUCTIONS

### TYPE C

