

YAMAHA NIKEN '18-

M O U N T I N G I N S T R U C T I O N S

REF 2385

TOURING SCREEN



1 Person



20 min



EASY



Nº 10

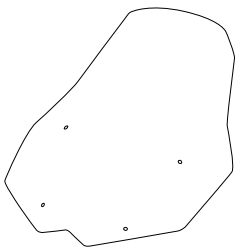
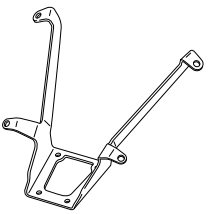







ALLEN

Nº 3
Nº 4



PHILLIPS
SCREWDRIVER

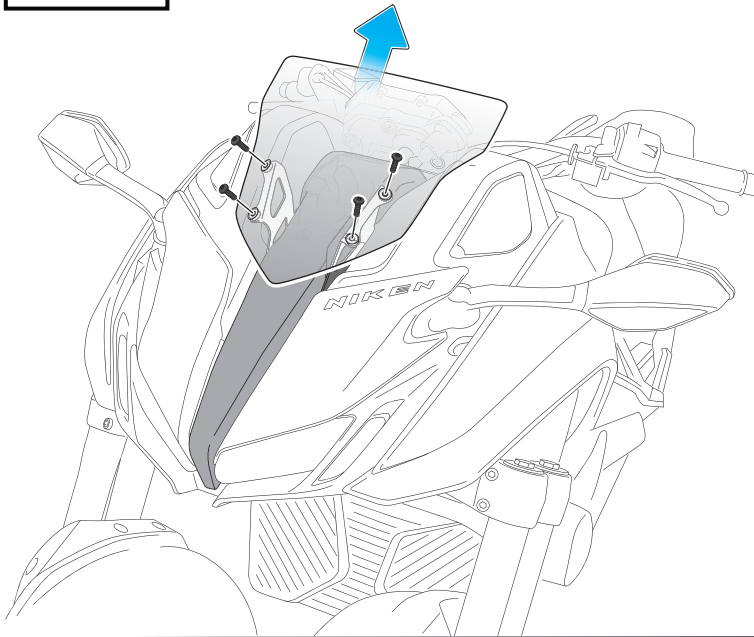
ID	PART	DESCRIPTION	QTY	REF
1		Touring screen	1	2385F/H/N/WM3
2		Metal support	1	SOPORIP7---2385
3		M5 silentblock	4	SILENBTM5-046/1
4		M5x20 Ø11 ISO 7380 Allen screw	4	TORNI-I7380-730
5		M5x1 Nylon washer	4	ARNV00000000245
6		M5 ISO 7380 Screw cap	4	TAPON-----85
7		Ø4,5 x Ø11 x 2mm Rubber washer	4	ARAND-EPDM--722

YAMAHA NIKEN '18-

MOUNTING INSTRUCTIONS

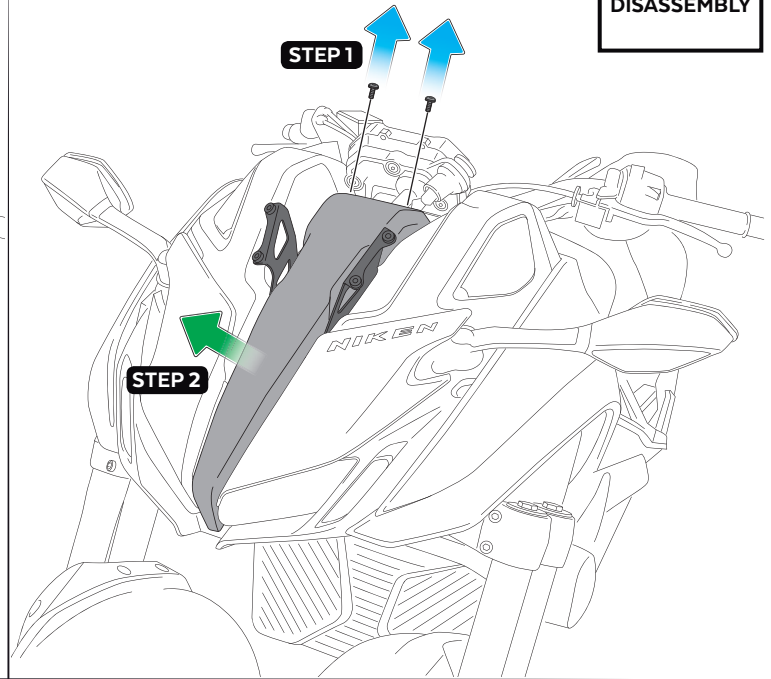
1

DISASSEMBLY



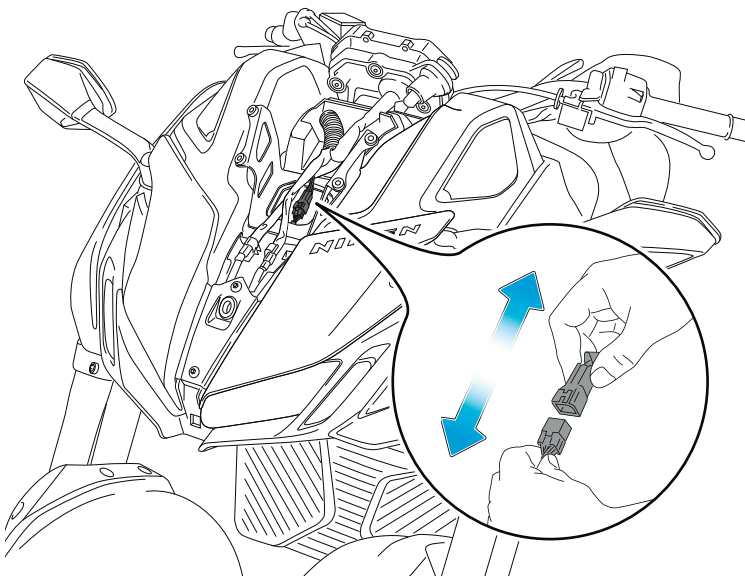
2

DISASSEMBLY



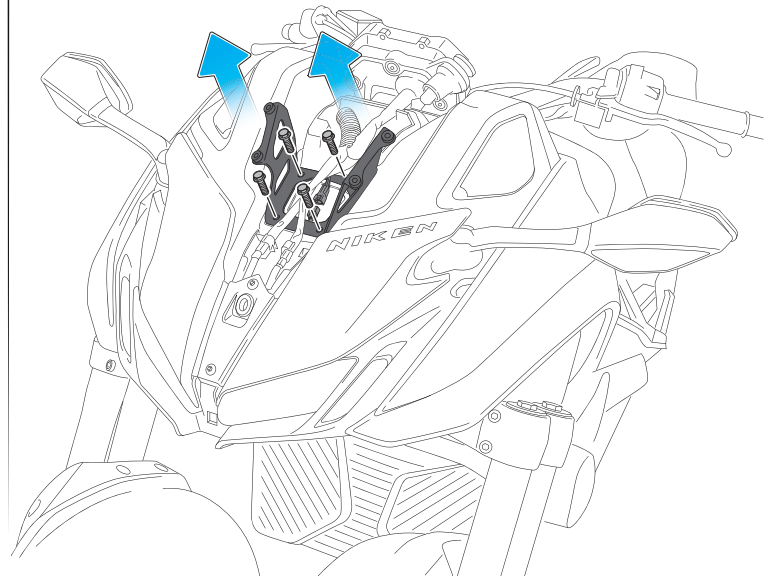
3

DISASSEMBLY



4

DISASSEMBLY

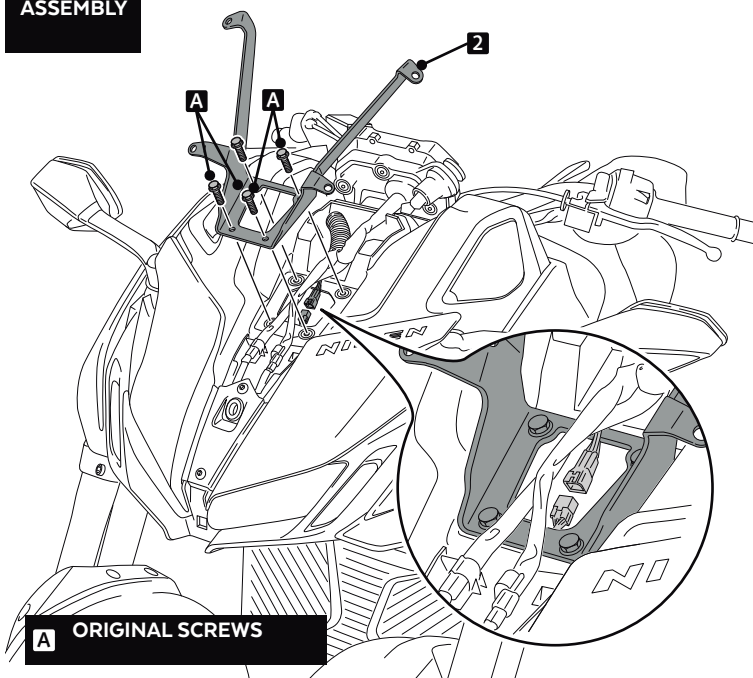


YAMAHA NIKEN '18-

MOUNTING INSTRUCTIONS

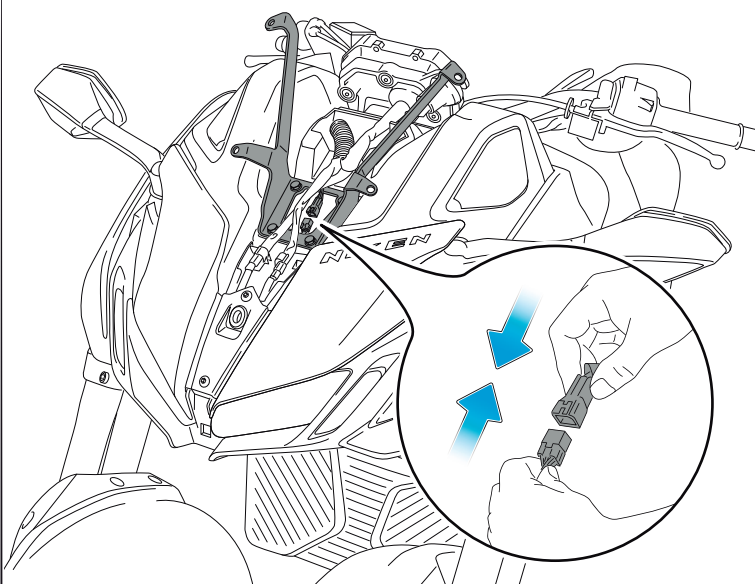
5

ASSEMBLY



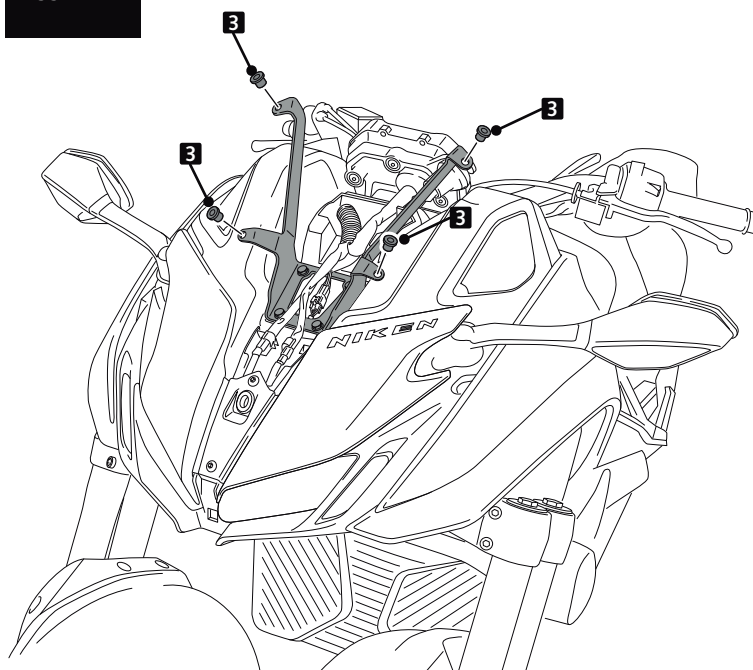
6

ASSEMBLY



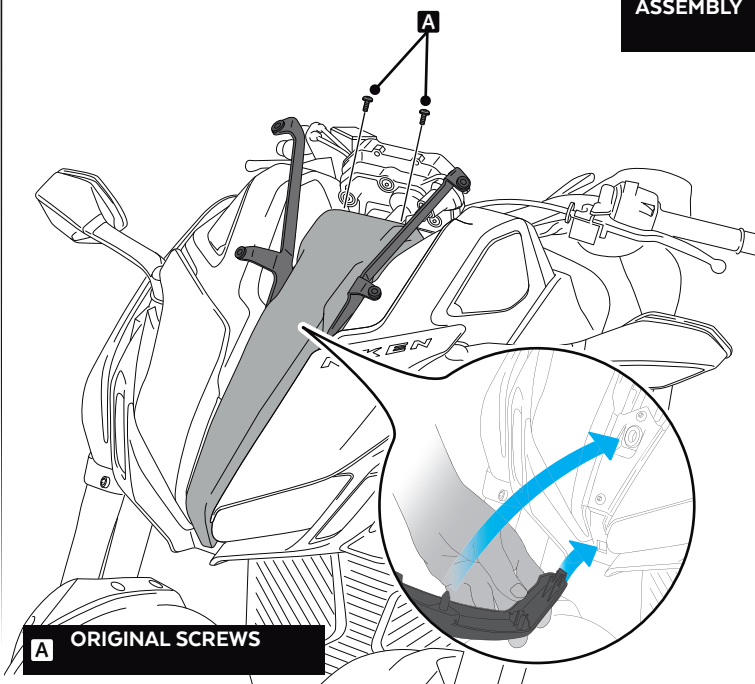
7

ASSEMBLY



8

ASSEMBLY

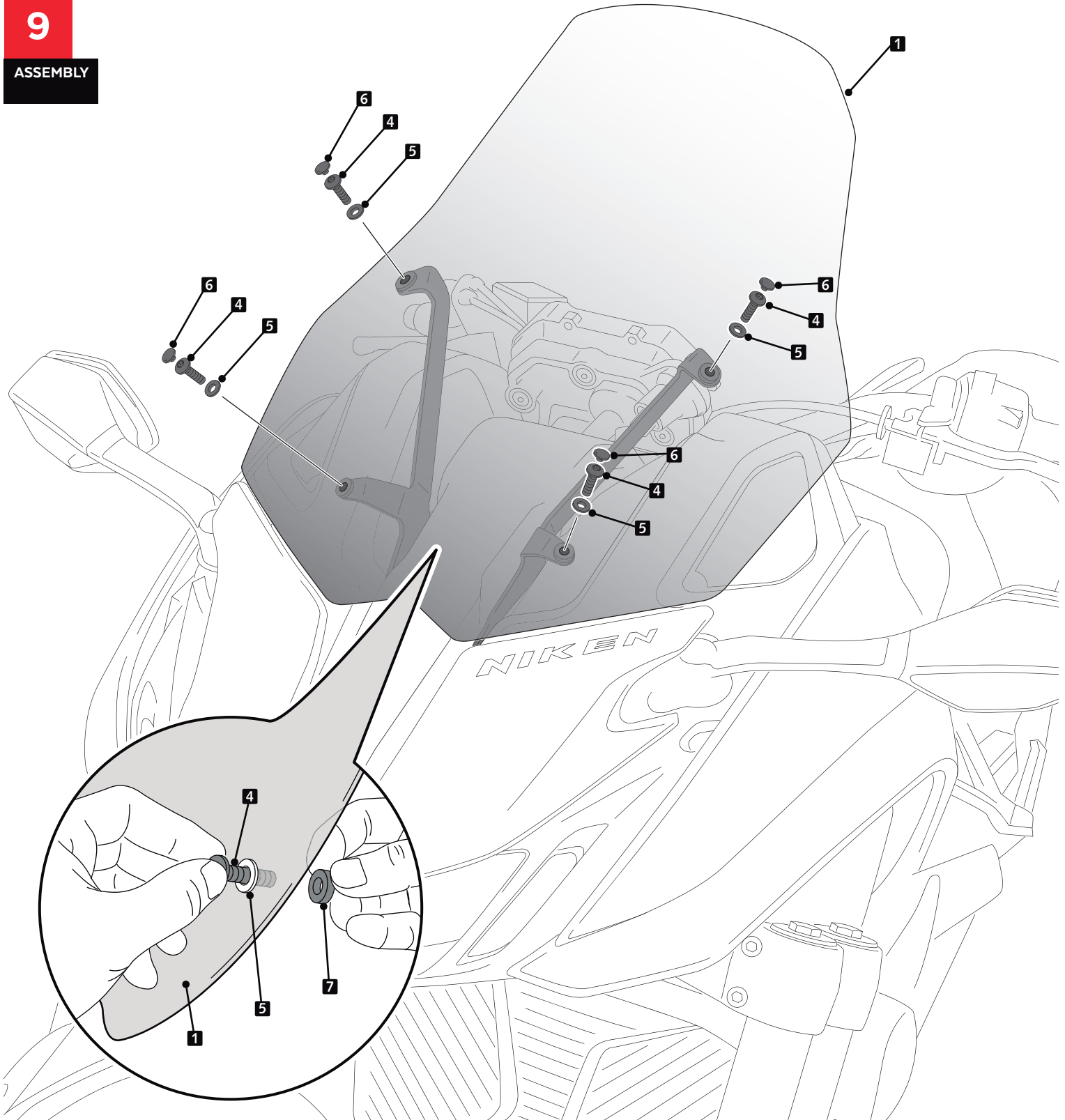


YAMAHA NIKEN '18-

MOUNTING INSTRUCTIONS

9

ASSEMBLY



VISERA MULTIREGULABLE MULTI-ADJUSTABLE VISOR



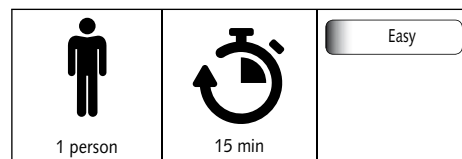
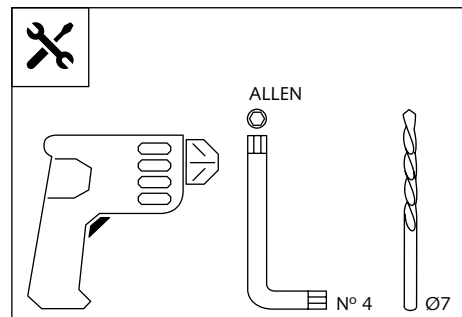
Ref.: 6007

Ref.: 5852

Ref.: 5853

Smoke

Clear



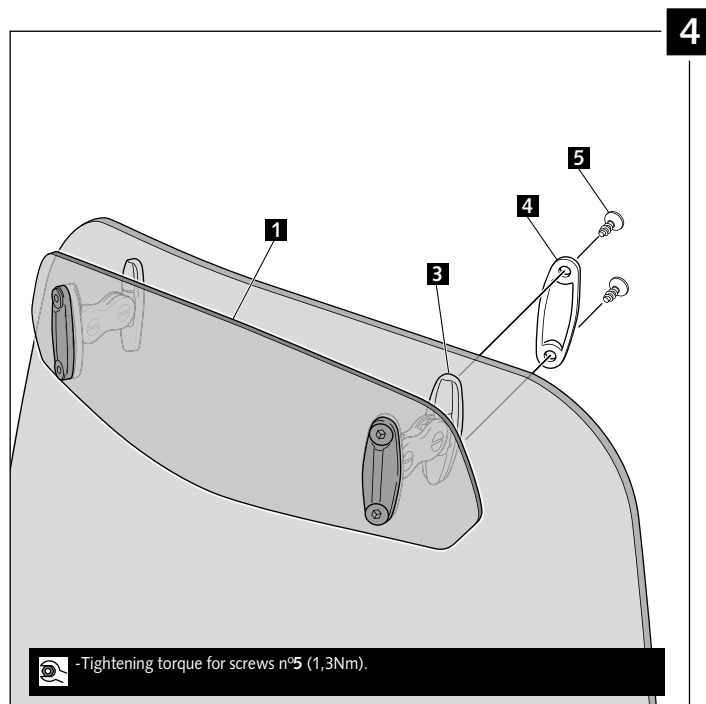
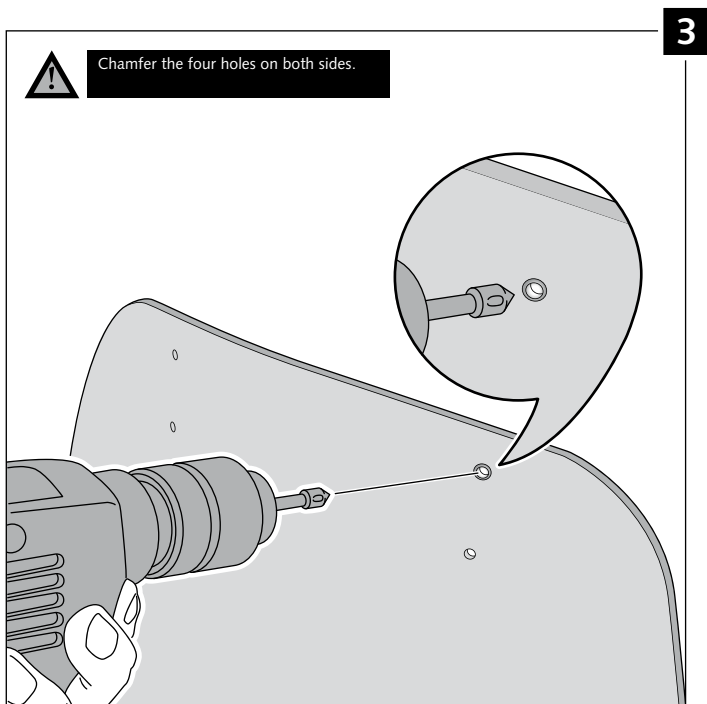
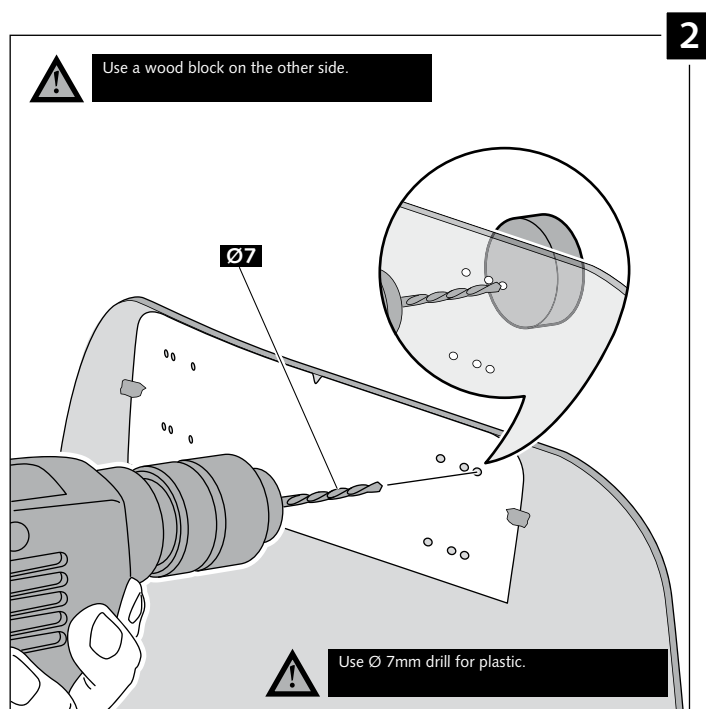
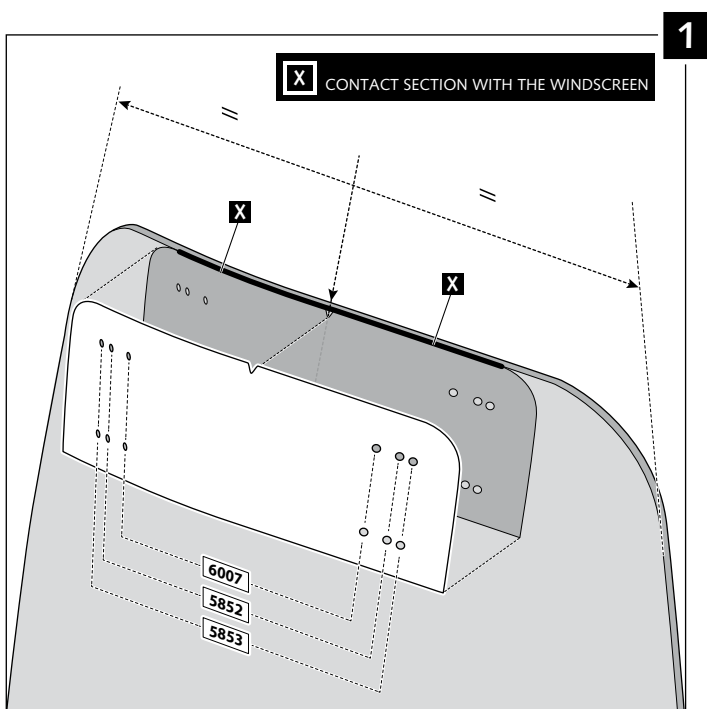
Note:
If the visor is supplied along with the windscreen, the windscreen will come factory-drilled so no drilling is necessary.

ID.	PART	DESCRIPTION	QTY.
1		Visor	1
2		Template	1
3		Multi-adjustable mechanism	2
4		Cap	4
5		Plastic thread fastener M6x12	8

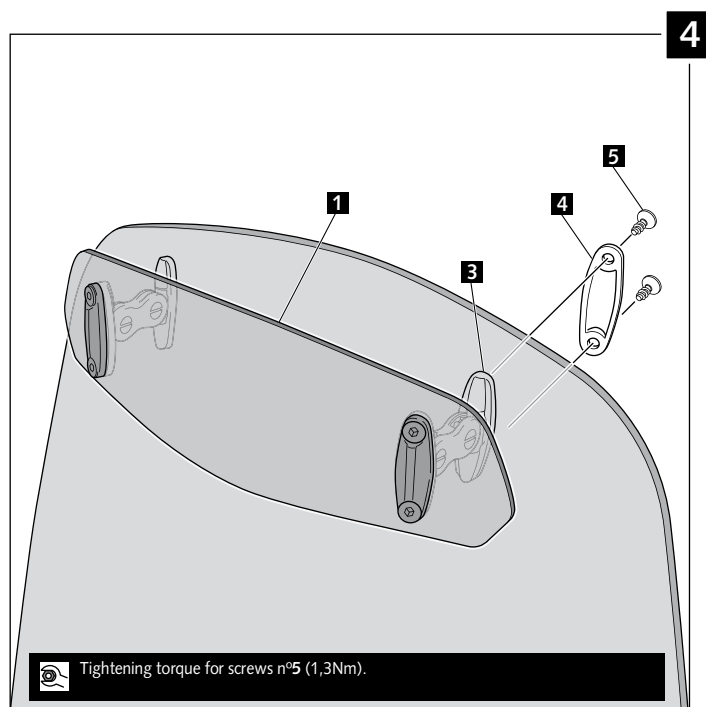
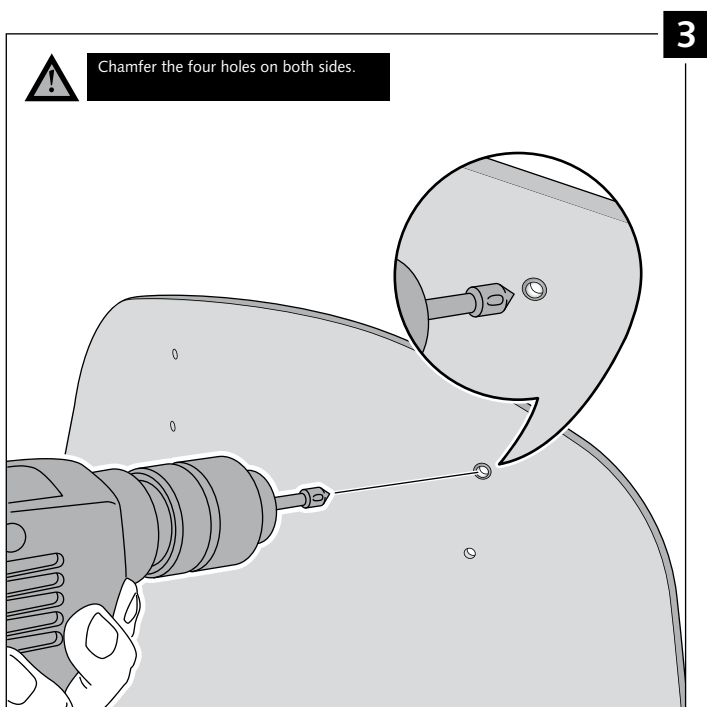
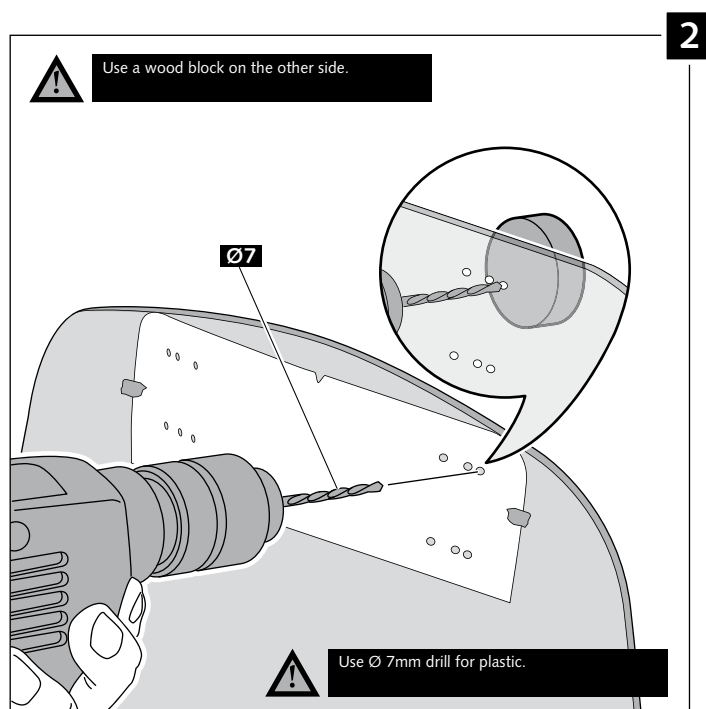
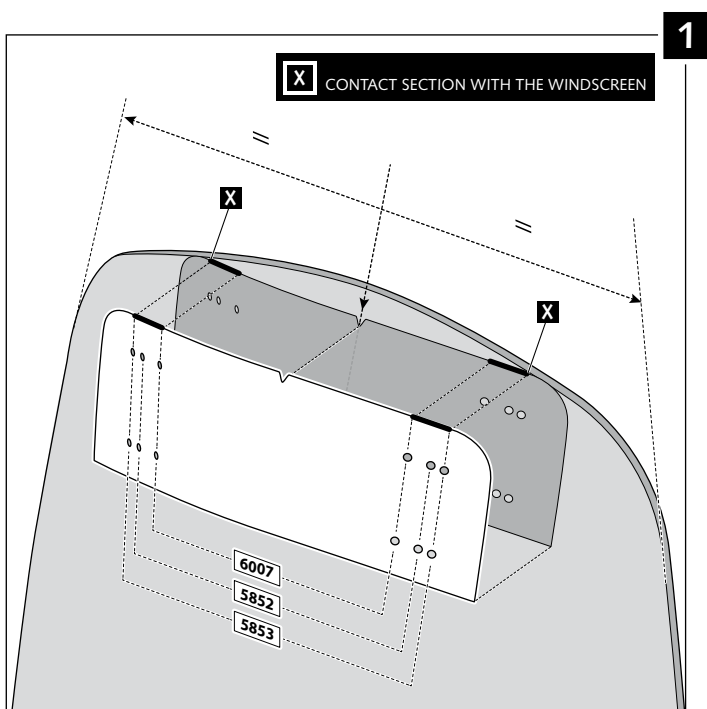
VISERA MULTIREGULABLE MULTI-ADJUSTABLE VISOR

MOUNTING INSTRUCTIONS

TYPE A



VISERA MULTIREGULABLE MULTI-ADJUSTABLE VISOR



VISERA MULTIREGULABLE MULTI-ADJUSTABLE VISOR

MOUNTING INSTRUCTIONS

TYPE C

