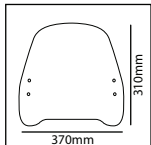
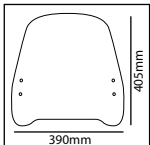




MOD. TRAFIC



MOD. URBAN



PREVENTION

- Use water and neutral soap to clean the windshield.
- Check the tightening of the fasteners periodically.
- Park the scooter facing the sun, avoiding the sun-reflection effect that may damage some parts.
- Park if possible on even surfaces.

Thanks for your attention.

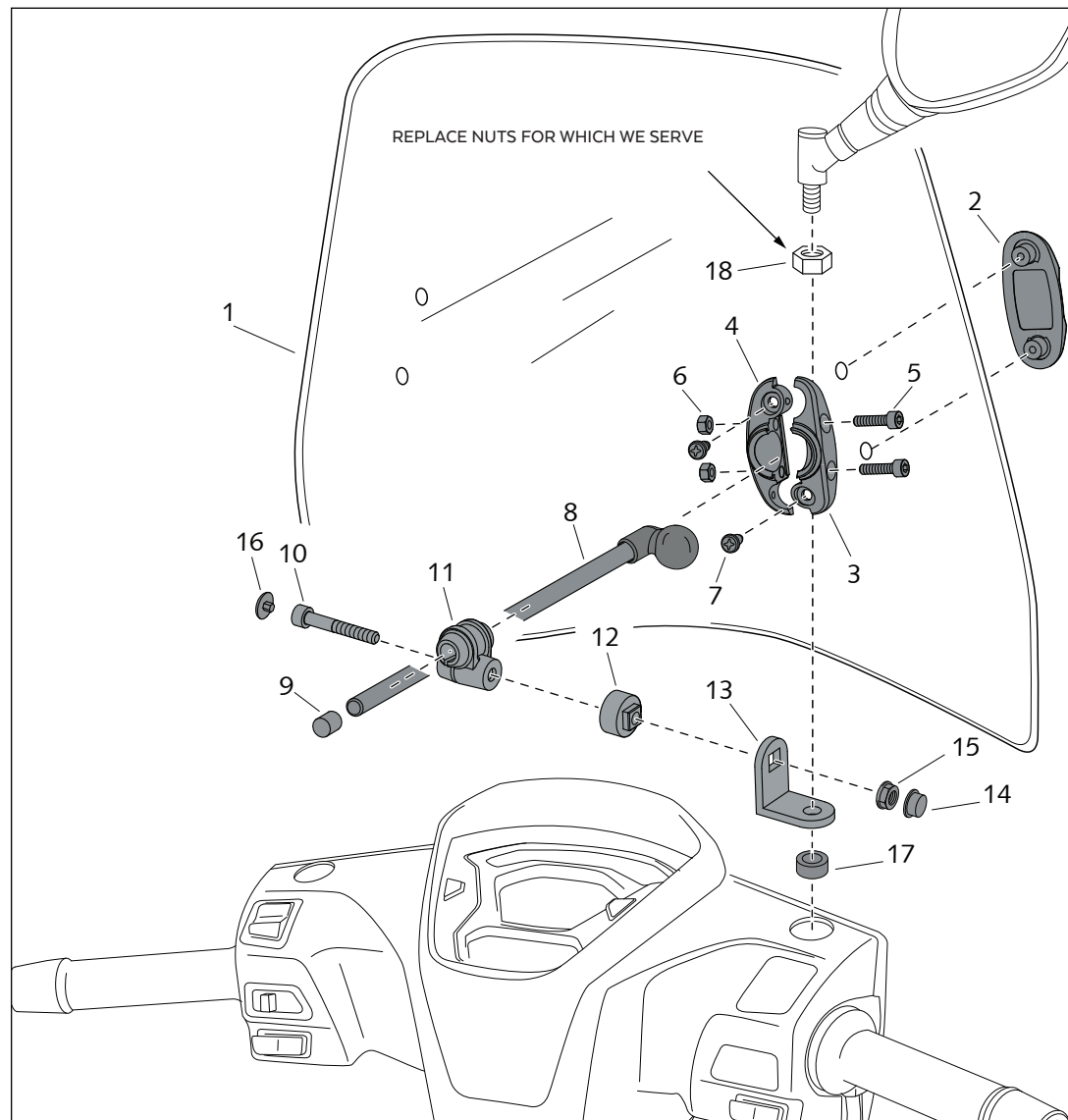
ID.	DESCRIPTION	QTY.
1	Windshield	1
2	Exterior cap	2
3	Ball bearing exterior support	2
4	Ball bearing interior support	2
5	M5x20 DIN912 allen inox screw	4
6	M5 DIN982 lock inox nut	4
7	M5x13 phillips screw	4
8	Ø9x130 90° bar	2
9	Final bar cap	2
10	M8x40 D912 screw	2
11	Rod guide support	2
12	Coupling angle	2
13	Angle Ref.:582	2
14	M8 nut cover	2
15	M8 DIN6923 nut	2
16	M8 DIN912 screw cap	2
17	Ø16xØ10x6 spacer	2
18	M10/125 nut	2

WINDSHIELD ADAPTABLE TO

KYMCO PEOPLE S 125 '18-

Mod.: TRAFIC
Ref.: 2884

Mod.: URBAN
Ref.: 2920





Puig puts everything within reach.

Check out the collection of motorcycle windshields & fairings we offer.