

BMW S1000XR '20-

M O U N T I N G I N S T R U C T I O N S

REF 20447

TOURING SCREEN



1 Person



15 min

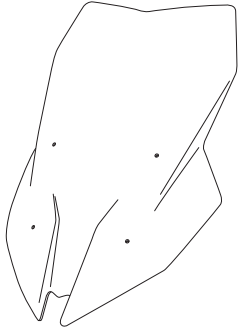
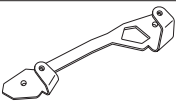
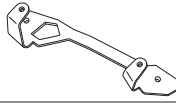







EASY



TORX
T25

ALLEN
N° 3

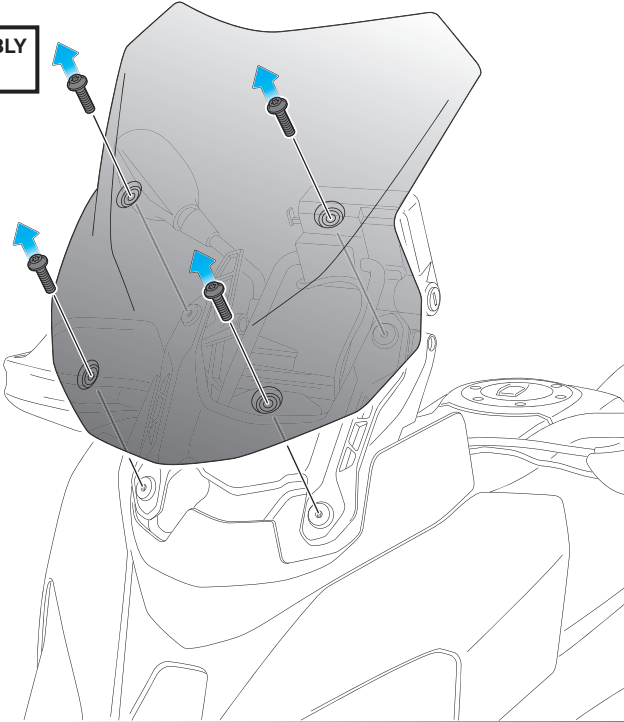
ID	PART	DESCRIPTION	QTY	REF
1		Touring screen	1	10798F/H/N/WM3
2		Right support	1	SOPOR2P4-R20447
3		Left support	1	SOPOR2P4-L20447
4		Ø9xØ6x8mm silentblock	4	AROPASACABLES-3
5		Ø12xØ6,8x7,3mmmm bush with flange	4	CASQUI-1A---750
6		M5X16 Ø11 ISO 7380 Allen screw	4	TORNI-I7380-493
7		M5X11 Ø11 ISO 7380 Allen screw	4	TORNI-AI---520
8		M5 ISO 7980 Allen cap screw	4	TAPON-----85

BMW S1000XR '20-

MOUNTING INSTRUCTIONS

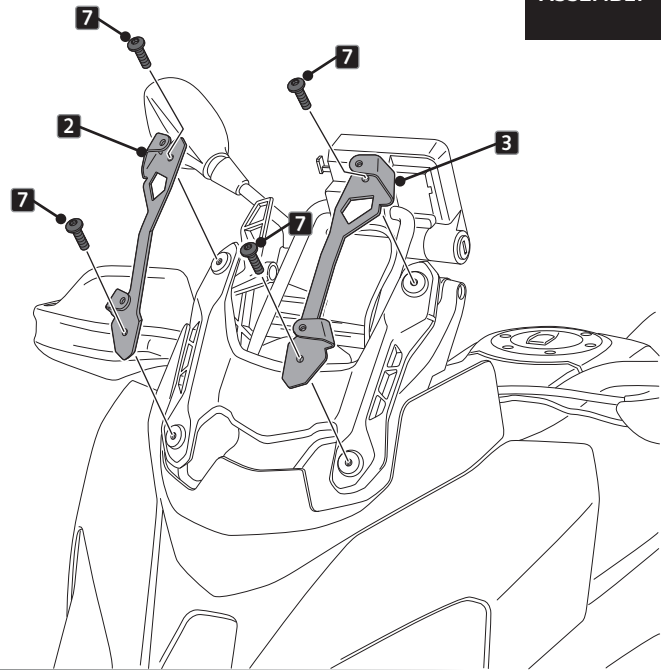
1

DISASSEMBLY



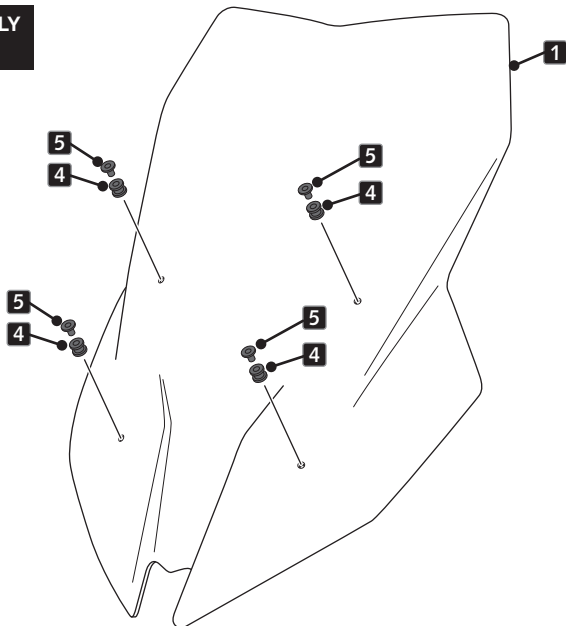
2

ASSEMBLY



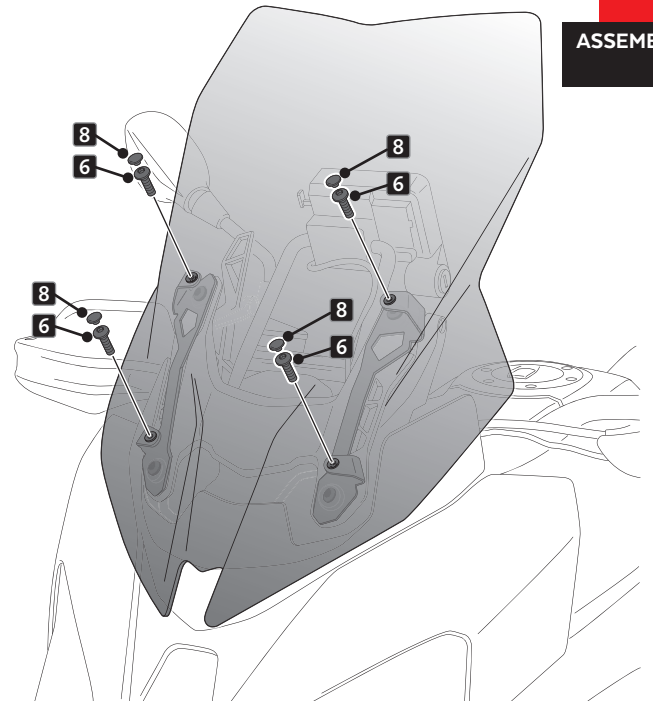
3

ASSEMBLY



4

ASSEMBLY



MULTI-ADJUSTABLE VISOR



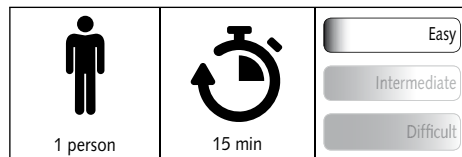
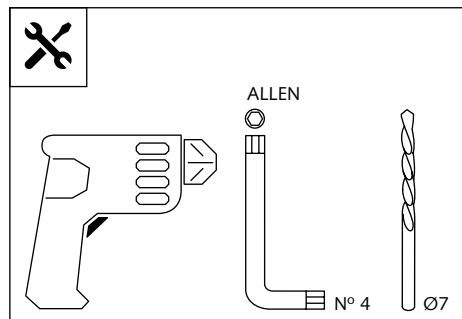
Ref.: 6007

Ref.: 5852

Ref.: 5853

Smoke

Clear



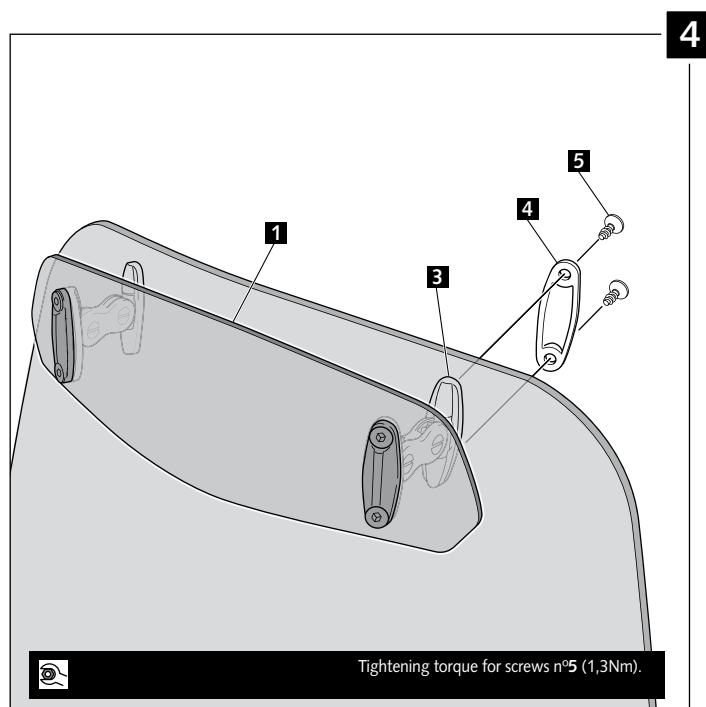
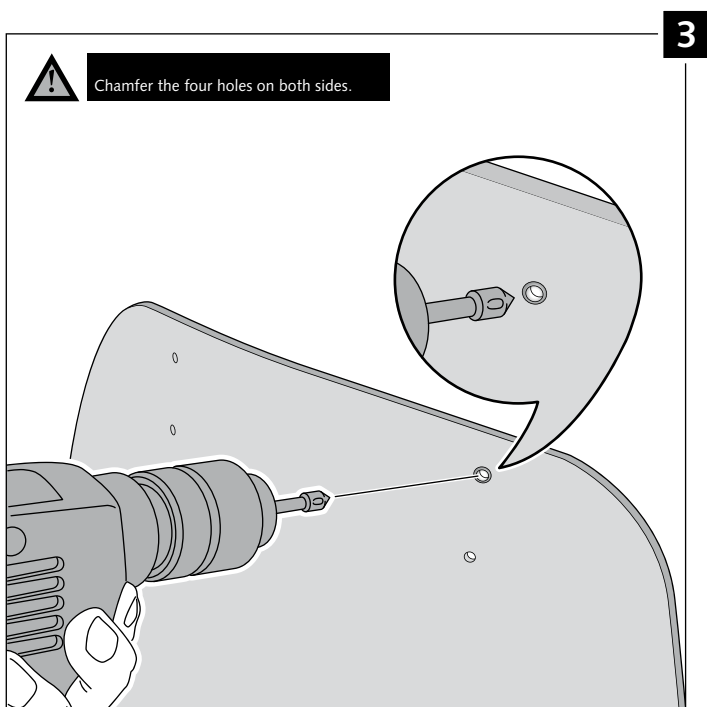
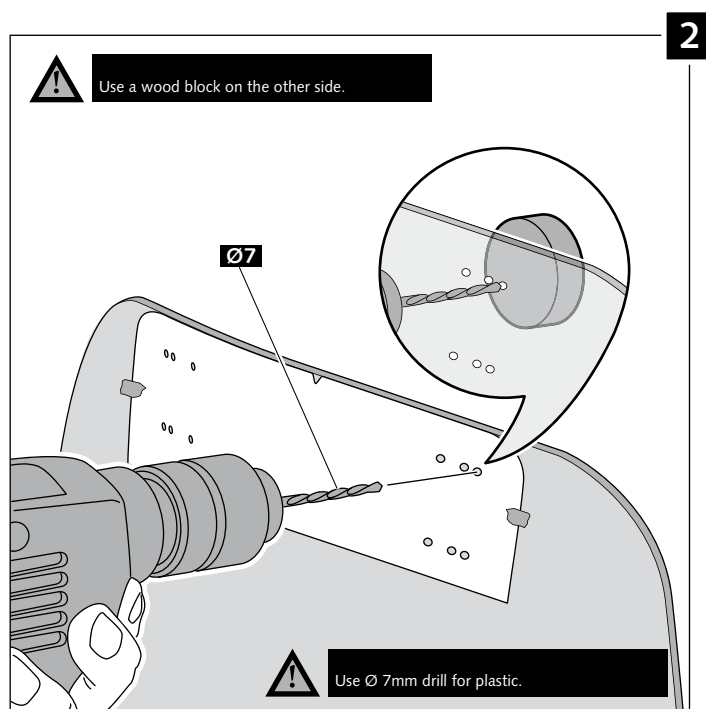
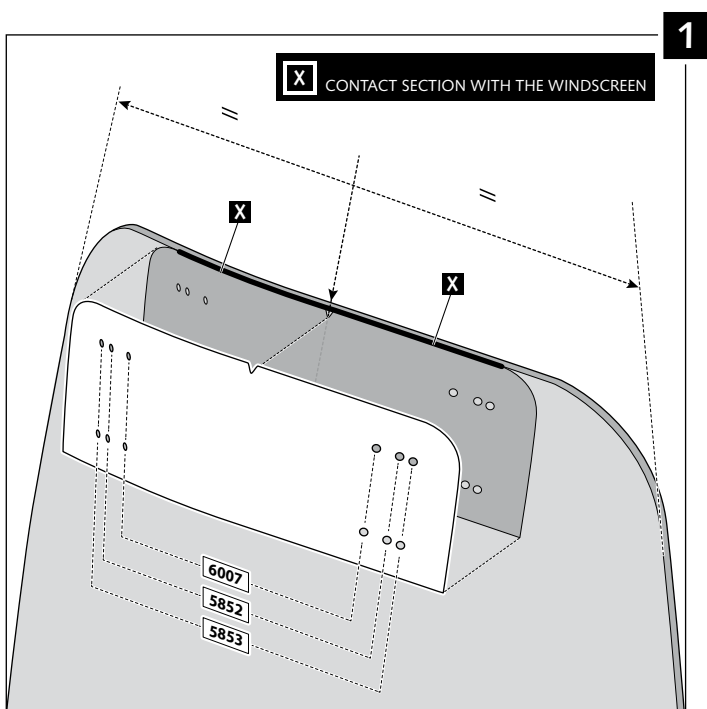
Note:
If the visor is supplied along with the windscreen, the windscreen will come factory-drilled so no drilling is necessary.

ID.	PART	DESCRIPTION	QTY.
1		Visor	1
2		Template	1
3		Multi-adjustable mechanism	2
4		Cap	4
5		Plastic thread fastener M6x12	8

MULTI-ADJUSTABLE VISOR

- MOUNTING INSTRUCTIONS -

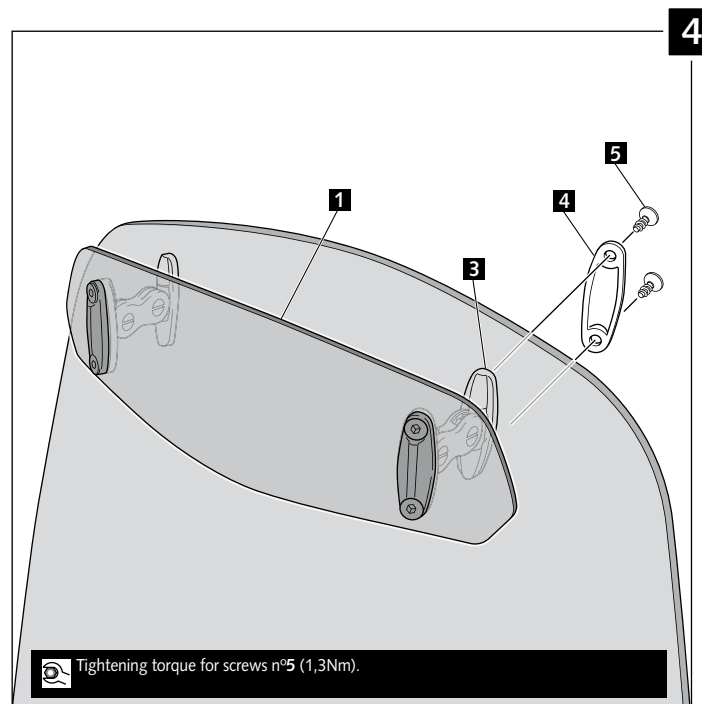
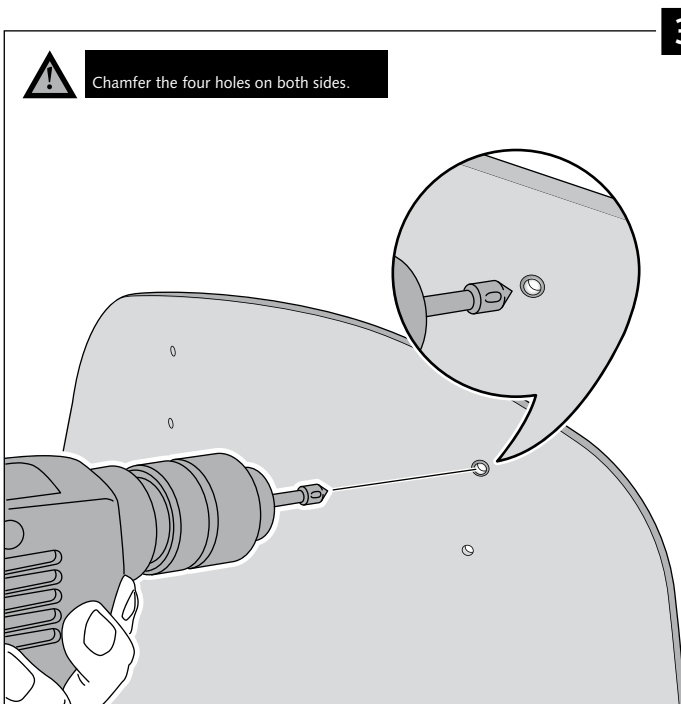
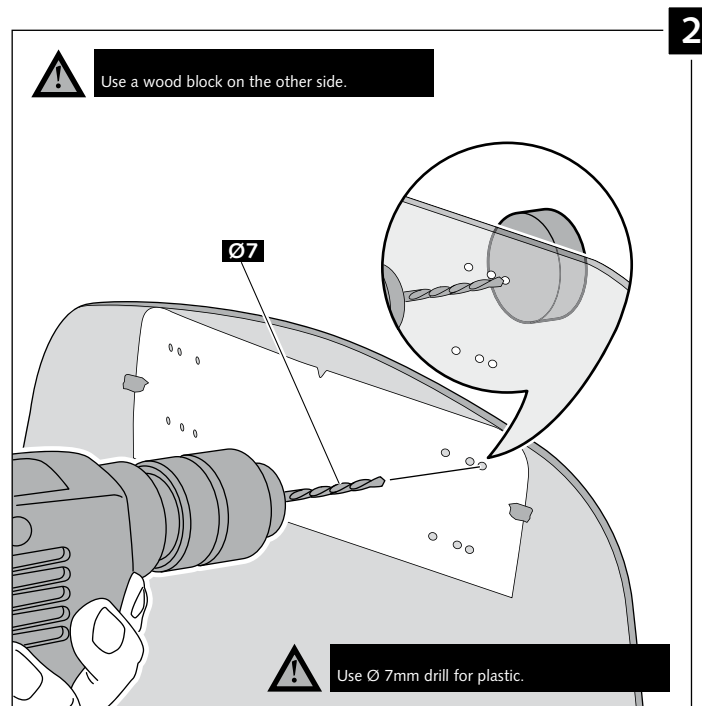
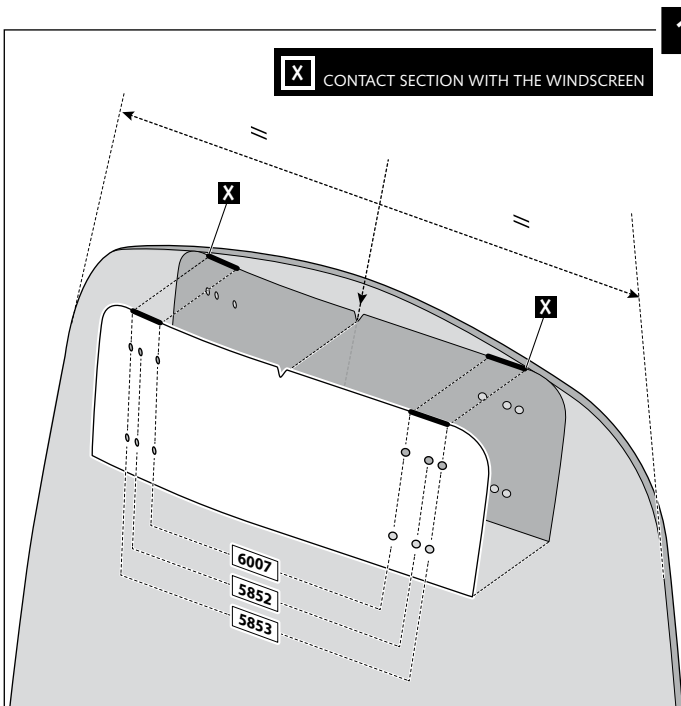
TYPE A



MULTI-ADJUSTABLE VISOR

- MOUNTING INSTRUCTIONS -

TYPE B



MULTI-ADJUSTABLE VISOR

- MOUNTING INSTRUCTIONS -

TYPE C

