

**KTM 1290 SUPERDUKE R '20**

REF 20451N

**PRO CRASH PADS****INSTRUCTIONS TO ASSEMBLE**

Remove the fasteners that subject the chassis to the engine. Mount the protectors on each own side as the figure below shows. Tight the set, and place the caps. All the screws replaced, should be tightened to the torque specified in the oem maintenance manual for your motorcycle. if no torque specifications are provided in the oem maintenance manual, may be used 54Nm for all M10 screws.

Medium strength liquid thread-locker (i.e. "Loctite") should be used to secure all screws, bolts and nuts. All screws, bolts and nuts should be checked after driving the first 50 km to ensure that all are tightened to the proper torque.

FOR TO ASSEMBLE THE CRASH PADS, IF YOU ARE NOT A TRAINED MECHANIC, PLEASE CONTACT A SPECIALIST. MOTOPLASTIC, S.A. TAKES NO RESPONSIBILITY FOR DAMAGES CAUSED BY IMPROPER INSTALLATION. THE USE OF CRASH PADS DO NOT GUARANTEE A FULL PROTECTION IN CASE OF ACCIDENT. MOTOPLASTIC-PUIG DECLINE ANY RESPONSIBILITY IN CASE OF MOTORCYCLE DAMAGE.

ID.	DESCRIPTION	QTY.	REF.:
1	Cover set	1	PROTECMOTPATIN-
2	M10/150x90 DIN912 screw	2	TORNIAD912-0348
3	M10 washer	4	M2AM10DIN125AZB
4	Protector set PRO	2	PROTECMOTPATIN-
5	Black aluminum spacer (55mm)	2	CASPAT04-0-0004
6	Black right metallic support	1	PLATI391-1-0391
7	Black left metallic support	1	PLATI392-0-0392
8	Black aluminum spacer (65mm)	2	CASQU479-0-1779
9	Black aluminum spacer (53mm)	2	CASQU194-0-1494
10	M10/150x100 DIN912 screw	2	TORNIAD912-0355
11	M10/150x80 DIN912 screw	2	M2TM10150080A9B
12	M10 DIN6923 washer	2	TUERCAD6923M10Z
13	M10 DIN912 screw cap	4	TAPA--CHC10800E

# KTM 1290 SUPERDUKE R '20

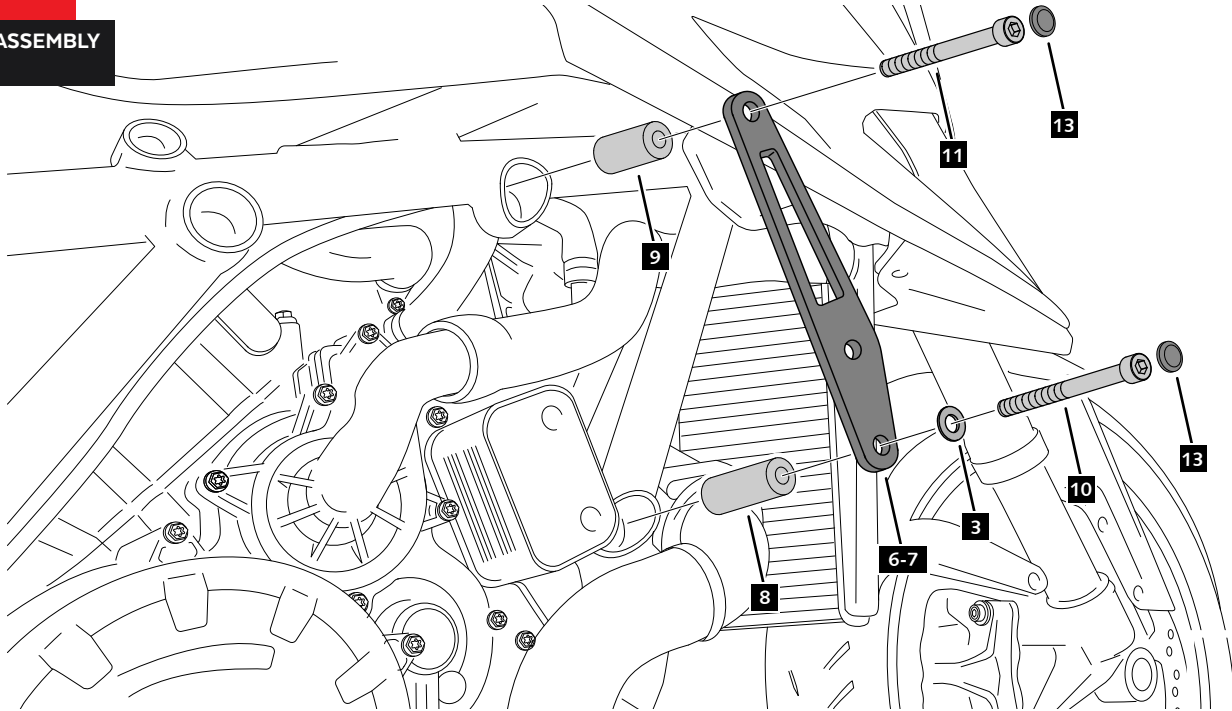
REF  
20451N

## MOUNTING INSTRUCTIONS

The right side assembly is shown as an example, so the same steps can be performed for the left side assembly.

**1**

ASSEMBLY



**2**

ASSEMBLY

