

BMW F900XR '20-

M O U N T I N G I N S T R U C T I O N S

REF 20430W

LATERAL DEFLECTOR



1 Person



10 min



EASY



ID	PART	DESCRIPTION	QTY	REF
1		Right deflector	1	20430W
2		Left deflector	1	20430W
3		25X130 Dual Lock Hook and Loop fastener (supplied assembled)	4	hook and loop fastener-25X130---

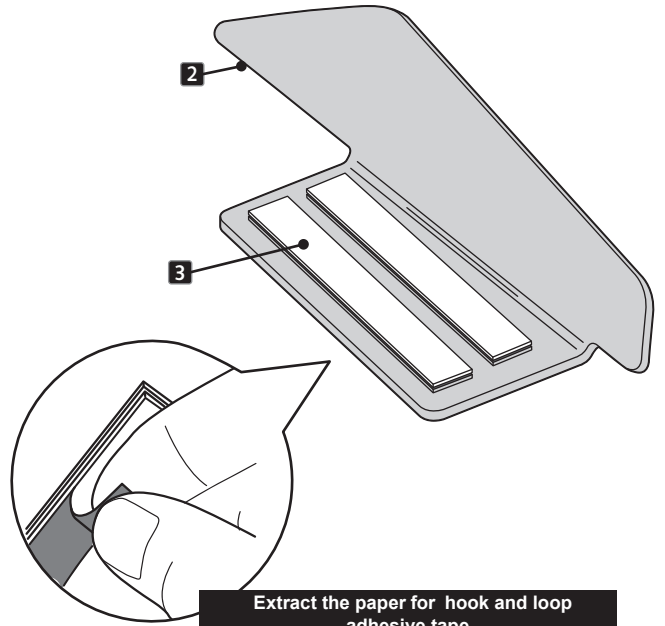
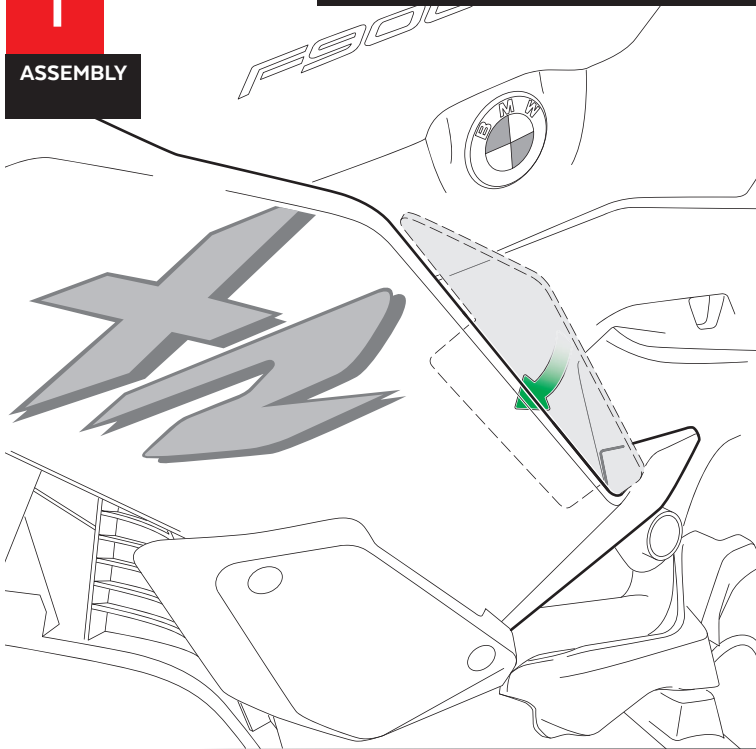
BMW F900XR '20-

MOUNTING INSTRUCTIONS

1

ASSEMBLY

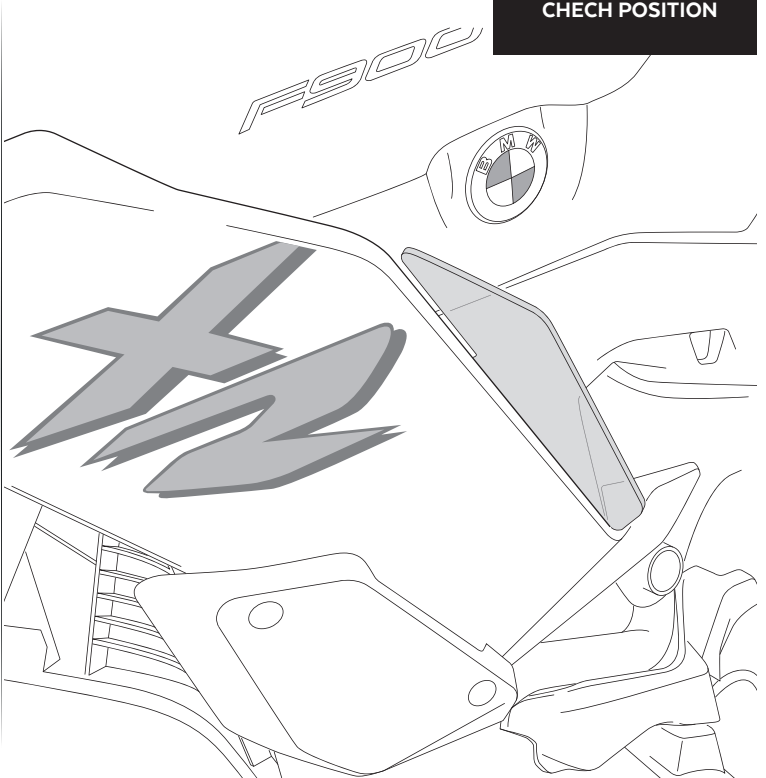
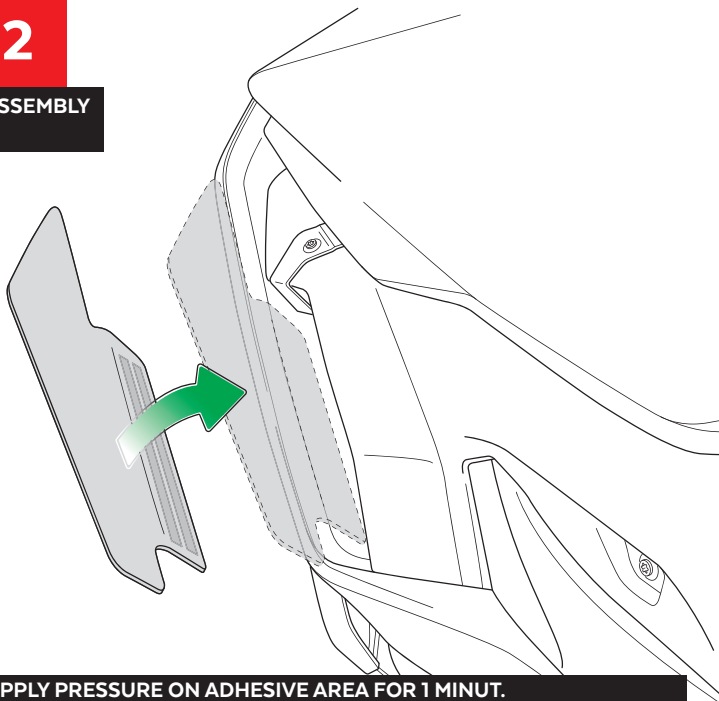
The left side assembly is shown as an example, so the same steps can be performed for the right side assembly.



2

ASSEMBLY

CHECK POSITION



APPLY PRESSURE ON ADHESIVE AREA FOR 1 MINUT.
IDEAL TAPE APPLICATION IS ACCOMPLISHED WHEN TEMPERATURE
IS BETWEEN 21 °C and 38 °C AND THE BOND IS ALLOWED TO DWELL
24 HOURS.