

YAMAHA MT-09 '17-

M O U N T I N G I N S T R U C T I O N S

REF 20380

NAKED SPOILERS



1 Person



45 min



DIFFICULT



FIX



N° 10
N° 11

FLAT
SCREWDRIVER



ALLEN



N° 3
N° 4

ID.	PART	DESCRIPTION	QTY.	REF.:
1		Deflector	2	10787N /A/R/VM3
2		Right superior spoiler	1	10782M3
3		Right inferior spoiler	1	10782M3
4		Left superior spoiler	1	10782M3
5		Left inferior spoiler	1	10782M3
6		Right support	1	SOPOR8P5R20380
7		Left support	1	SOPOR8P5L20380
8		Right turn light support	1	SOPOR8P5RTL20380
9		Left turn light support	1	SOPOR8P5LTL20380
10		Turn light plate	2	SOPOR8P5P20380
11		Turn light cover	2	SOPOR8P5C20380
12		M5x16 long hexagonal 40 (Rosca interior M5x15) special screw	2	TORNI-E-----859
13		Ø8,5xØ13x3,5 spacer	2	CASQUI-----775
14		M5x16 Ø11 ISO 7380 Allen screw	4	TORNI-I780-493
15		M5x11 Ø11 ISO 7380 Allen screw	14	TORNI-AI-----520
16		M5X1 nylon washer	12	ARNV0000000245
17		M5 ISO 7380 allen screw cap	14	TAPON-----85
18		M5 Silentblock	4	SILENTBTM5-046/1

YAMAHA MT-09 '17-

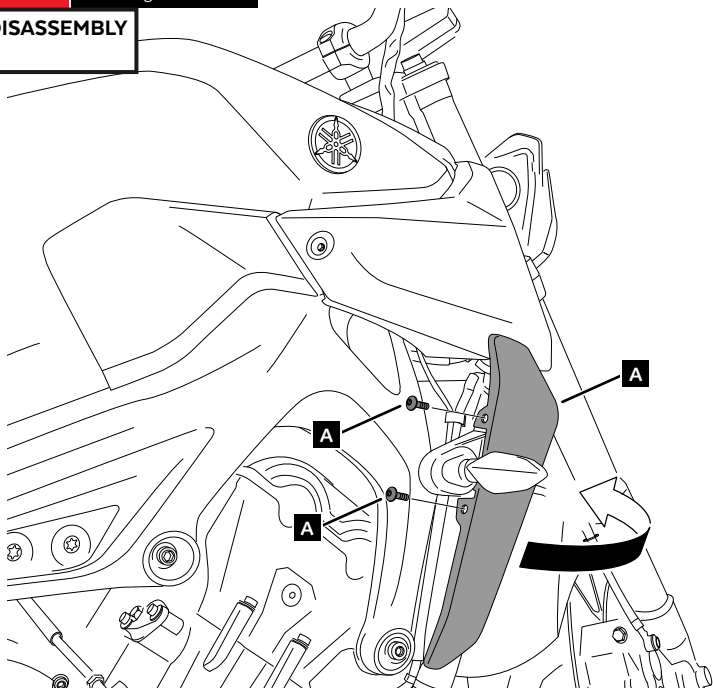
MOUNTING INSTRUCTIONS

The right side assembly is shown as an example, so the same steps can be performed for the left side assembly.

1

A Original screws

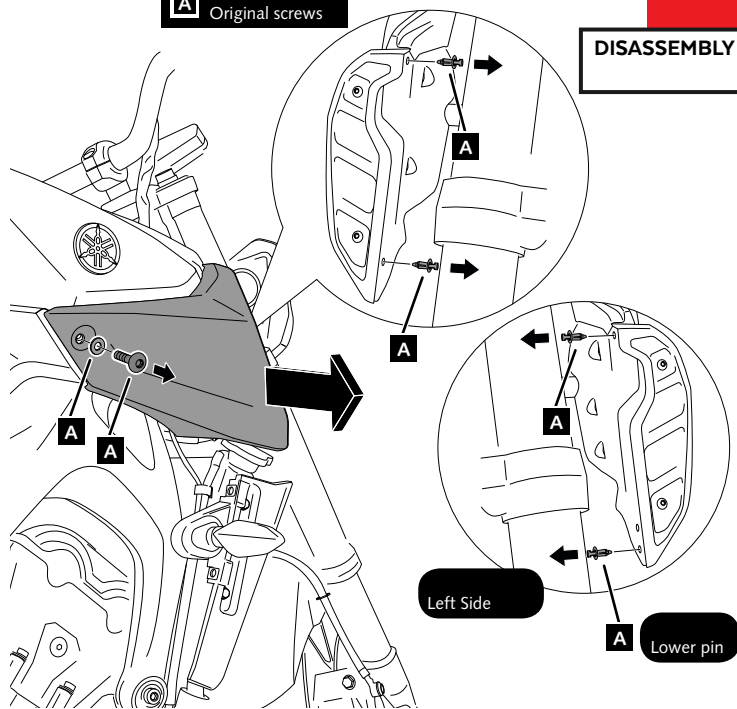
DISASSEMBLY



2

A Original screws

DISASSEMBLY

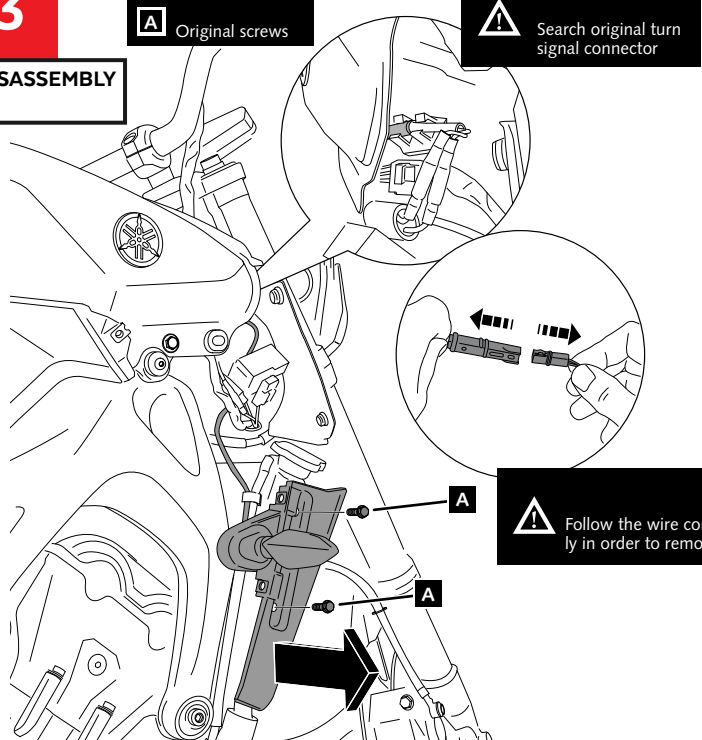


3

A Original screws

! Search original turn signal connector

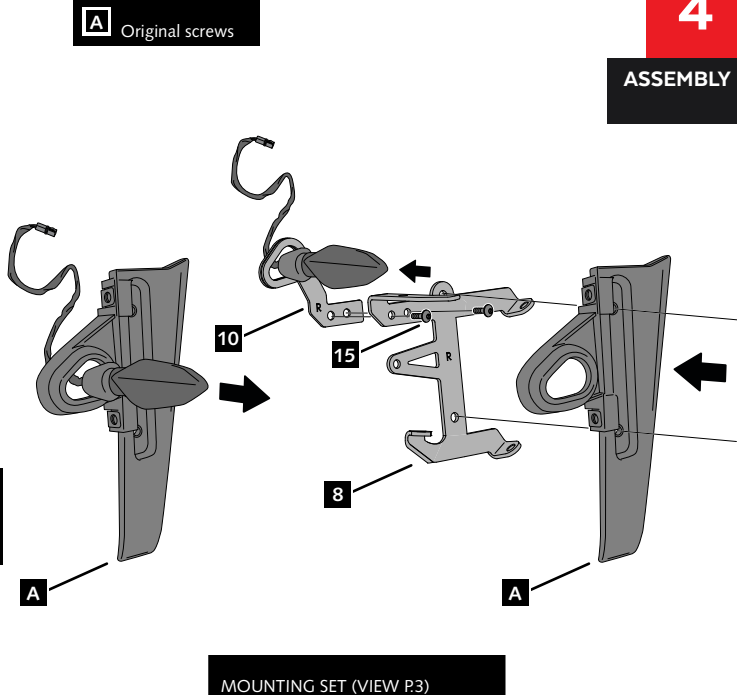
DISASSEMBLY



4

A Original screws

ASSEMBLY



MOUNTING SET (VIEW P3)

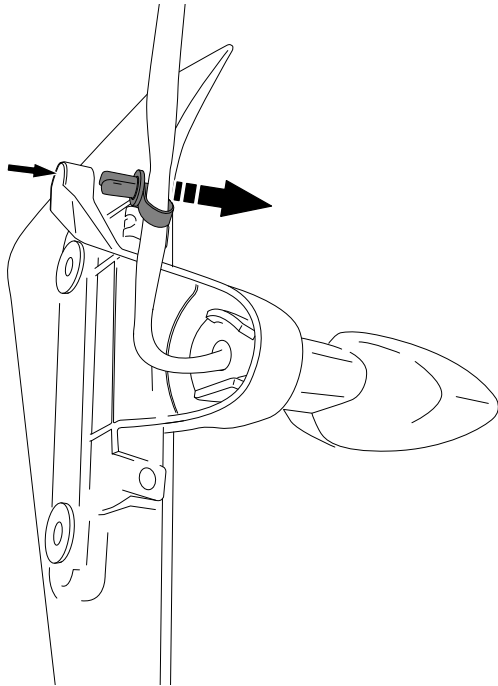
YAMAHA MT-09 '17-

MOUNTING INSTRUCTIONS

5

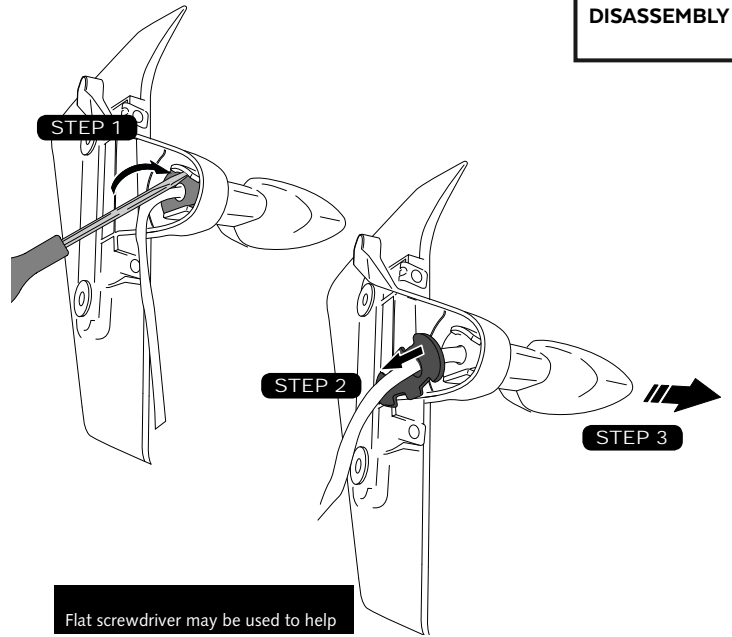
DISASSEMBLE ORIGINAL TURN SIGNAL

DISASSEMBLY



6

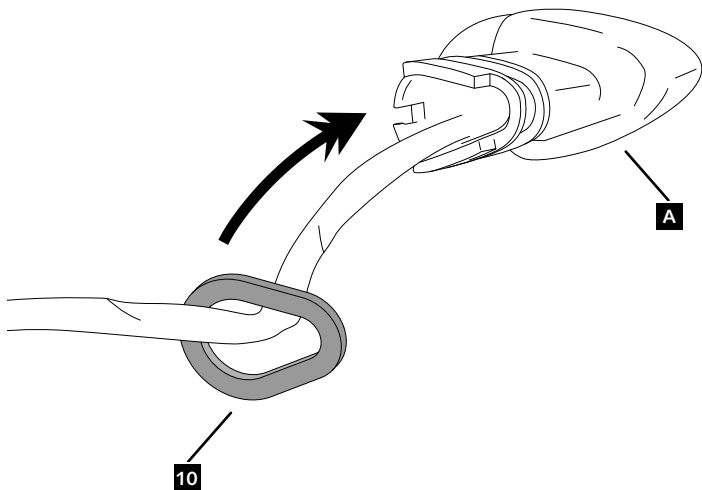
DISASSEMBLY



7

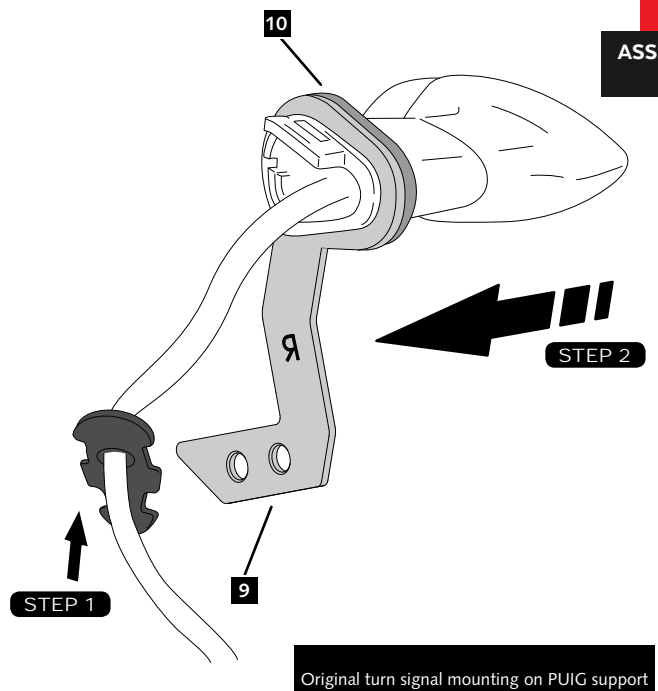
A Original turn signal

ASSEMBLY



8

ASSEMBLY



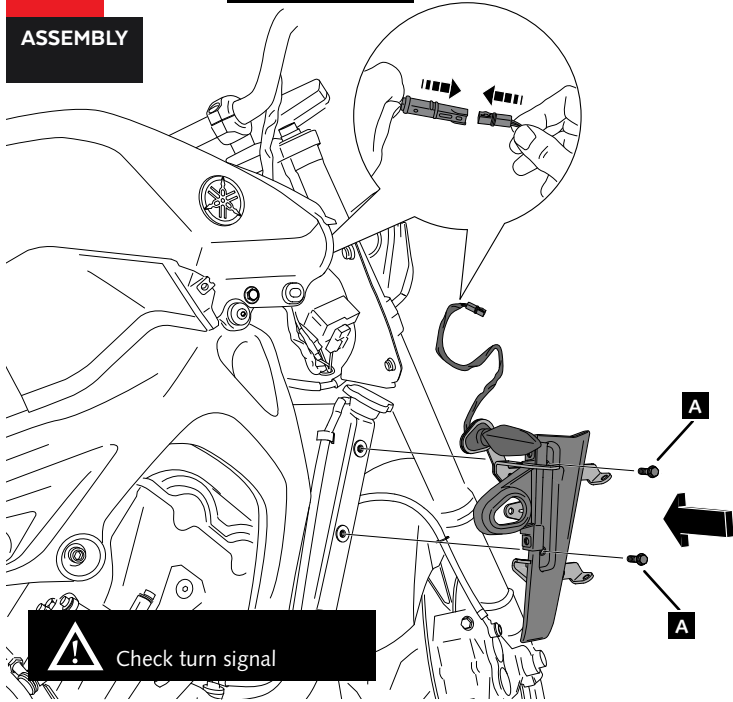
YAMAHA MT-09 '17-

MOUNTING INSTRUCTION

9

ASSEMBLY

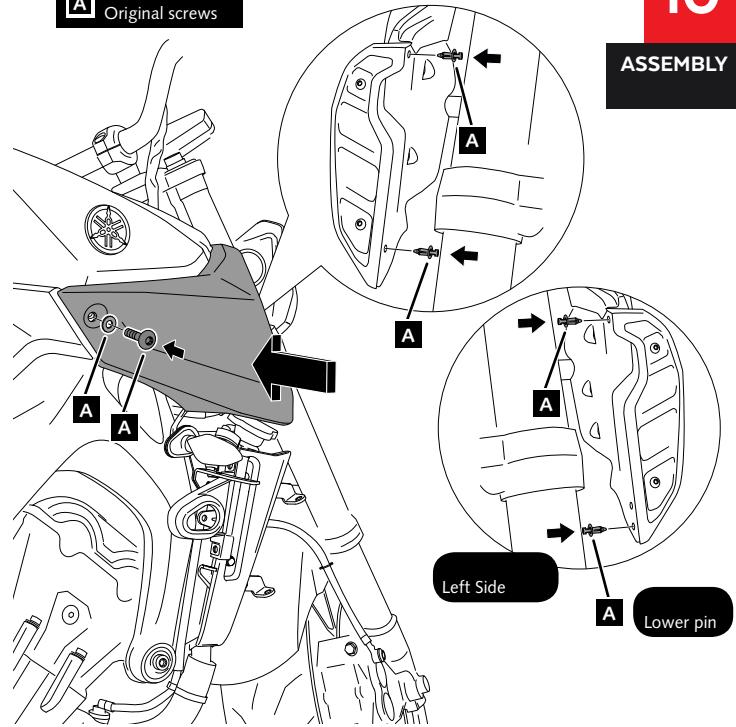
A Original screws



10

ASSEMBLY

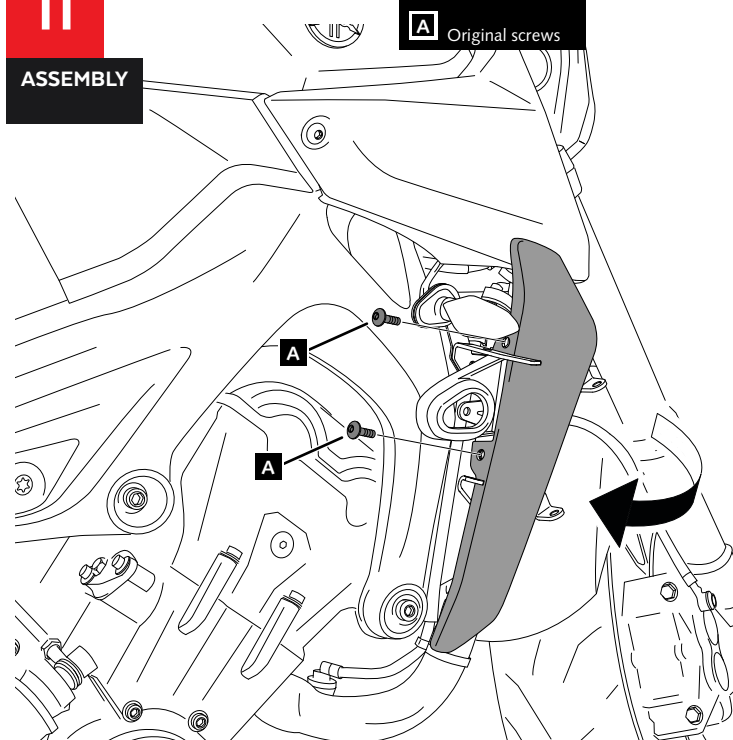
A Original screws



11

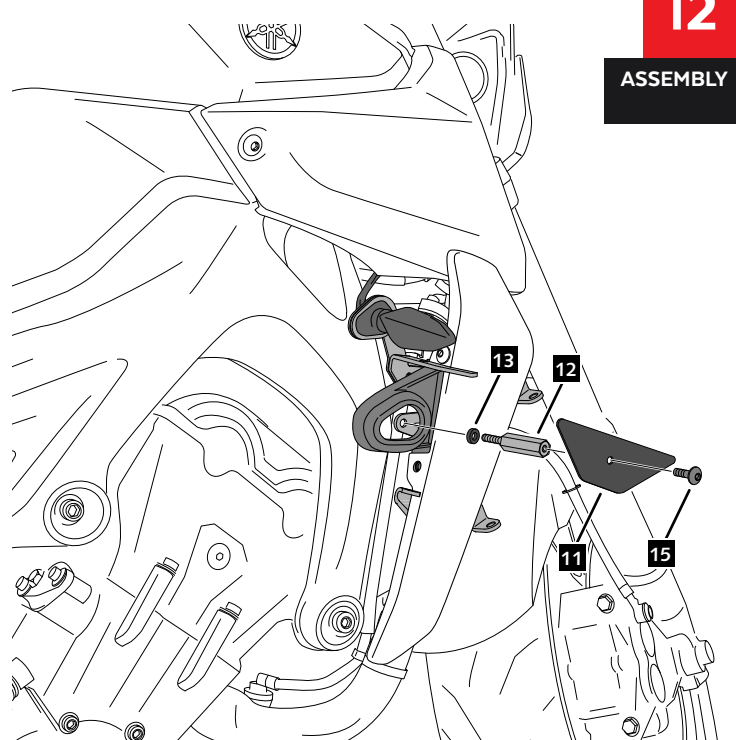
ASSEMBLY

A Original screws



12

ASSEMBLY

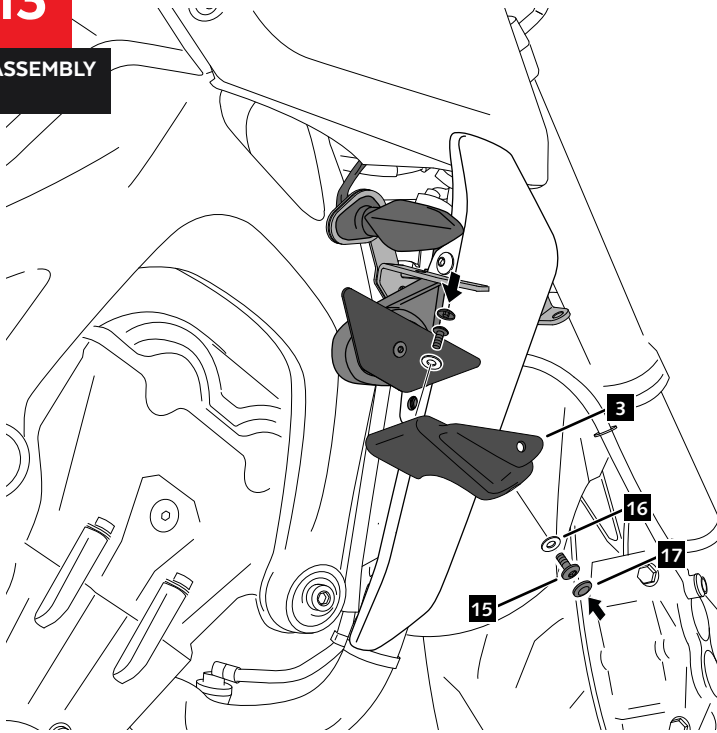


YAMAHA MT-09 '17-

- MOUNTING INSTRUCTIONS -

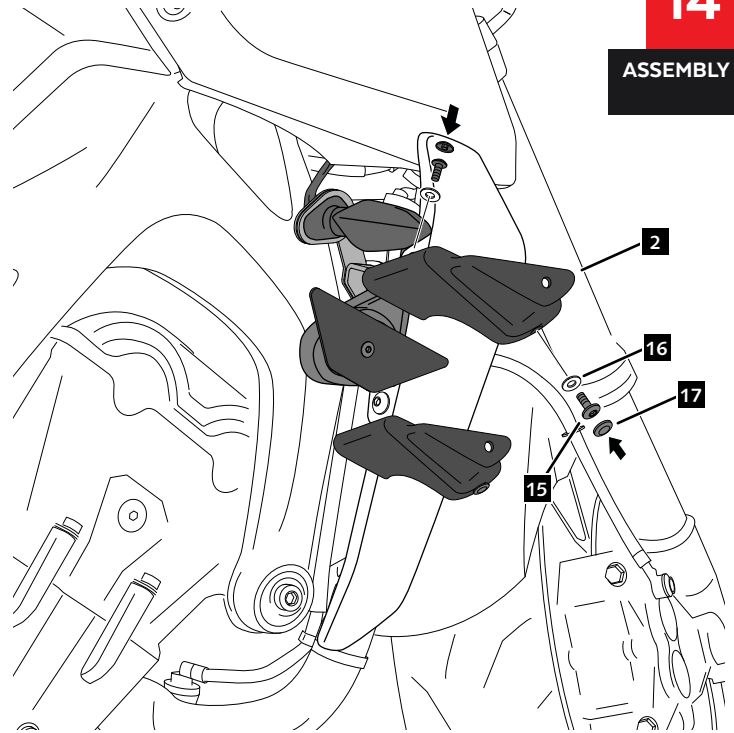
13

ASSEMBLY



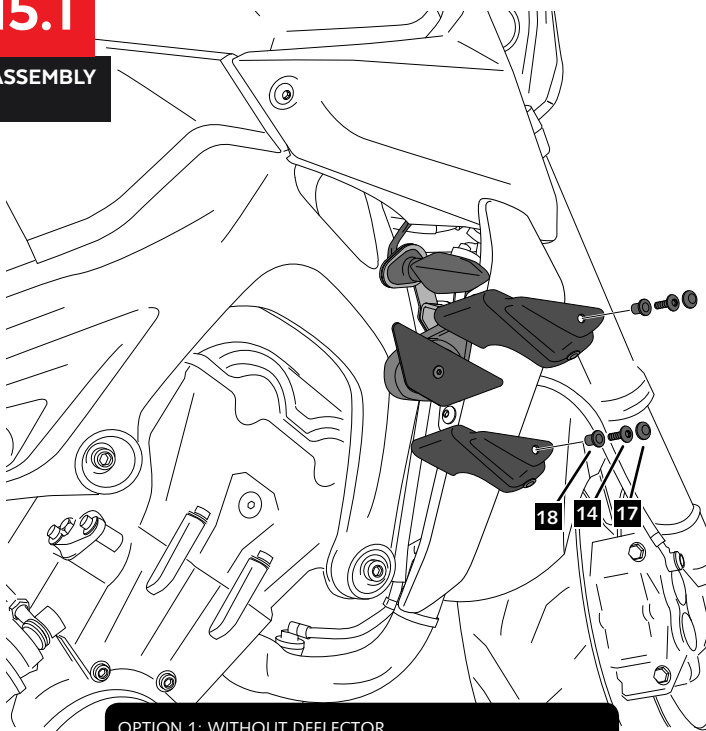
14

ASSEMBLY



15.1

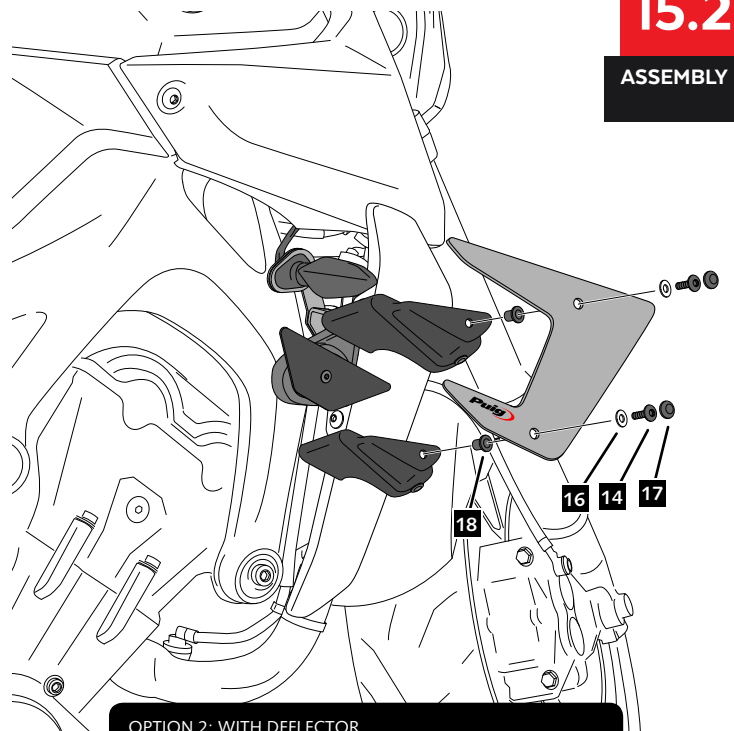
ASSEMBLY



OPTION 1: WITHOUT DEFLECTOR

15.2

ASSEMBLY



OPTION 2: WITH DEFLECTOR