

# CRASH PADS FOR SUZUKI GSXR 600(01-03)/750 (00-03)

REF: 1971



## INSTRUCTIONS TO ASSEMBLE

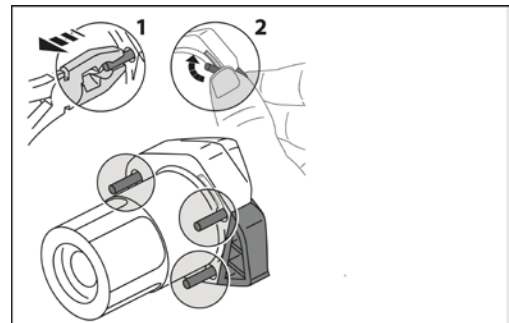
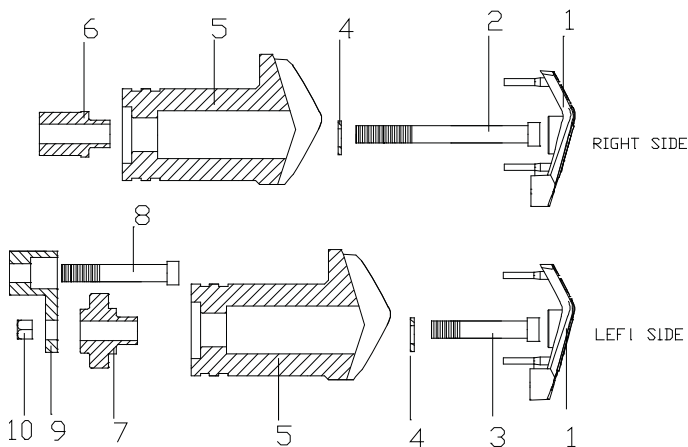
Dismount the fixation screws from the chassis to the engine in the support point marked on the picture. On the right side, the bodywork must be removed to mount the fastener and place the iron plate as the figure shows. Mount the crash pads on each own side as the figure shows, using the supplied screws. Once pressed, place the end caps (1) .



SUPPORT POINT

## MATERIAL SUPPLIED

POSITION	DESCRIPTION	QUANTITY
1	Plastic lids	2
2	M10/125 x90 screw	1
3	M10/150x50 screw	1
4	Washer $\varnothing 20$ ext. $\varnothing 10$ int x2	2
5	Nylon protector	2
6	Aluminium metal arrowhead right hand side	1
7	Aluminium metal arrowhead left hand side	1
8	M10/125x55 screw	1
9	Iron plate left hand side	1
10	M10/150 nut	1



THE USE OF CRASH PADS DO NOT GUARANTEE A FULL PROTECTION IN CASE OF ACCIDENT. MOTOPLASTIC-PUIG DECLINE ANY RESPONSIBILITY IN CASE OF MOTORCYCLE DAMAGE.