

**CRASH PADS FOR YAMAHA R6 03-04'**  
**REF:1877**



**INSTRUCTIONS TO ASSEMBLE**

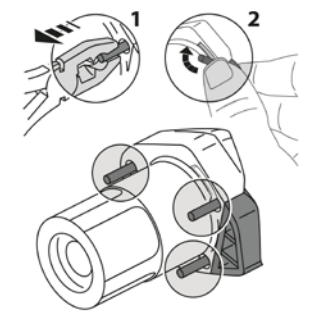
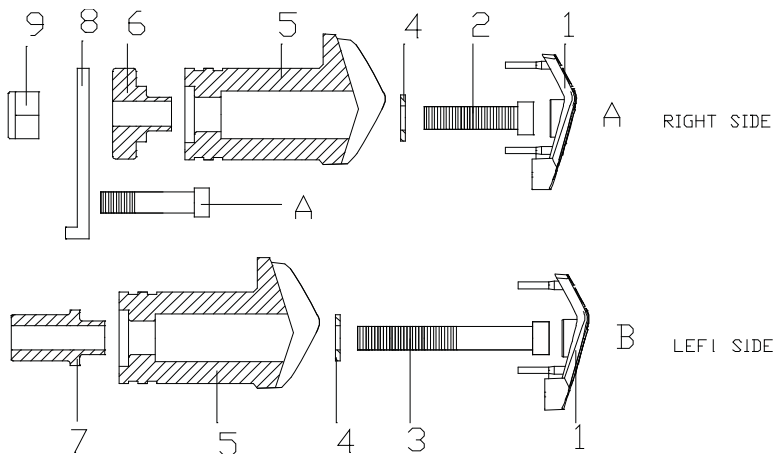
Dismount the fixation screws from the chassis to the engine in the support point marked on the picture (and the opposite side). Mount the crash pads on each own side as the figure shows, using the supplied screws. Once pressed, place the end caps (1)



SUPPORT POINT

**MATERIAL SUPPLIED**

POSITION	DESCRIPTION	QUANTITY
1	Plastic lids	2
2	M10/150x45 screw	1
3	M10/125x80 screw	1
4	∅20ext.∅10int x2 washer	2
5	Nylon protector 85mm	2
6	Aluminium metal arrowhead right hand side	1
7	Aluminium metal arrowhead left hand side	1
8	Metal support	1
9	M10/150 nut "autoblock" DIN982.8	1



THE USE OF CRASH PADS DO NOT GUARANTEE A FULL PROTECTION IN CASE OF ACCIDENT. MOTOPLASTIC-PUIG DECLINE ANY RESPONSIBILITY IN CASE OF MOTORCYCLE DAMAGE.

Learn more about motorcycle frame and body we have.