

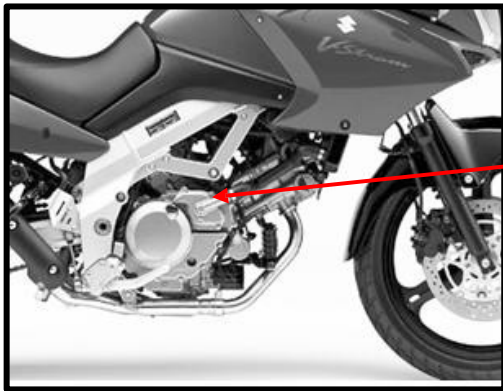
📖 CRASH PADS ADAPTABLE TO SUZUKI DL650 V-STROM 04'-, DL650XT V-STROM 15'-



REF: 1870

INSTRUCTIONS TO ASSEMBLE

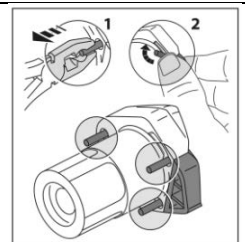
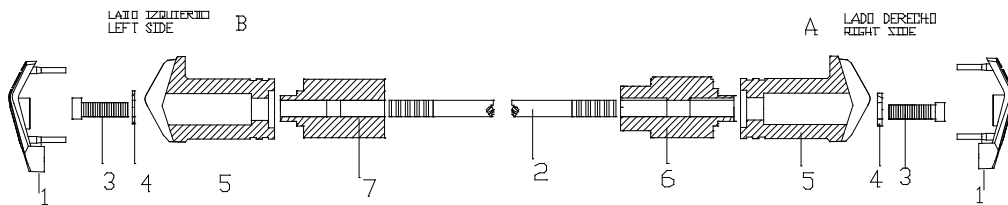
- Remove the rod that subject the chassis to the engine in the point marked on the figure (and the opposite side).
- Mount the crash pads on each own side as the figure shows, using the supplied rod.
- Once tighten, place the caps (1).



SUPPORT POINT

MATERIAL SUPPLIED

POSITION	DESCRIPTION	QUANTITY
1	Plastic lids	2
2	335mm screw bar	1
3	M12/175x25 screw	2
4	∅20ext.∅12,5int x2 washer	2
5	Nylon protector	2
6	Aluminium metal arrowhead right hand side	1
7	Aluminium metal arrowhead left hand side	1



If you are not a trained mechanic, please contact a specialist for assembling the crash pads. Motoplastic, S.A. takes no responsibility for damages caused by improper installation. The using of crash pads does not guarantee a full protection in case of accident.