

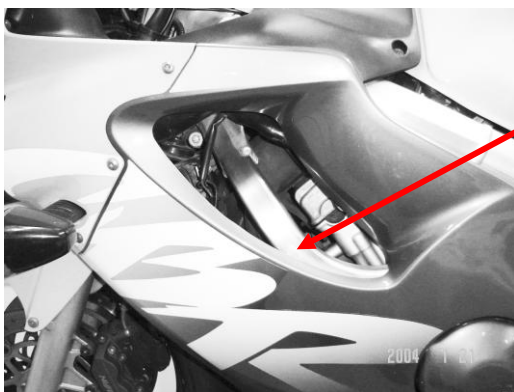
📖 CRASH PADS ADAPTABLE TO HONDA CBR600F 01-07'

REF: 1856



INSTRUCTIONS TO ASSEMBLE

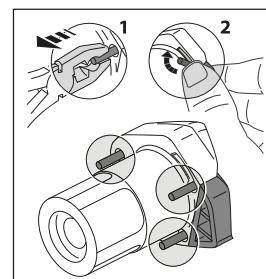
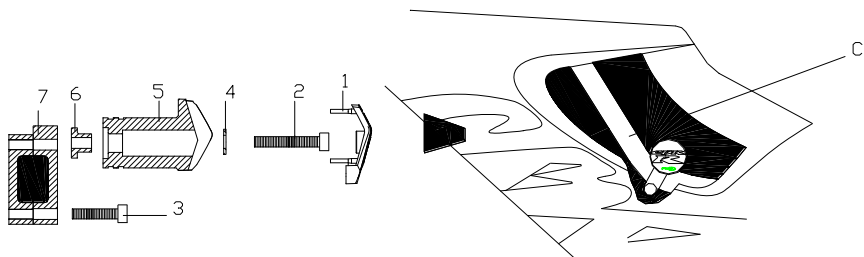
Mount the group bridle-protector in the chassis' rectangular section marked on the picture, and pointed on the figure attached (C). Move the group in order for the crash pad remain as close as possible from the bodywork. On the right hand side is recommended to dismount the bodywork side in order to have easiness to mount and fasten the item (1).



SUPPORT POINT

MATERIAL SUPPLIED

POSITION	DESCRIPTION	QUANTITY
1	Plastic caps	2
2	M8x50 fastener	2
3	M8x35 fastener	2
4	Ø20ext.Ø10int x2 washer	2
5	Nylon protector 85mm	2
6	Aluminium metal arrowhead	2
7	Aluminium bridle	2



If you are not a trained mechanic, please contact a specialist for assembling the crash pads. Motoplastic,S.A. takes no responsibility for damages caused by improper installation. The using of crash pads does not guarantee a full protection in case of accident.