

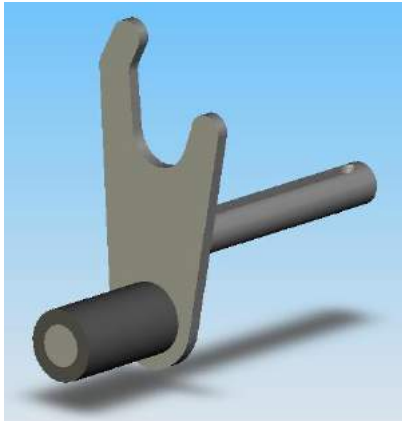


Black Max: Spool & Non-Spoiled Rear Stand

While we manufacture our products to a very high standard, we can't guarantee any stand that isn't assembled correctly or used incorrectly. Please be sure that you understand the instructions. PSR will not be held responsible in the instance of an incorrectly assembled stand. When using this service stand be sure the motorcycle and exhaust system are completely cool and the motorcycle is on a level and hard surface!

Stand Base Assembly:

With the stand handle pointing towards you, assemble uprights (Use quick release pins for versatility, or use nut & bolt hardware to eliminate slight free play)



Spool Application: (Preferred Method)

1. Insert the rear stand holder assemblies with the "V" pointing up and on the inside of the stand closest to your swingarm. Set width of rear stand holder assemblies. For best fit, V-spool holder should catch spools just inside the inner flange of each spool. Then **TIGHTLY** fasten bolts on top of the stand legs.

Non-Spool Application:

1. Using the under side of the "V" hardware: Simply flip the "V" towards ground, set width to swingarm, tighten set screw.
2. Using Rubber Blocks: With the steel rod pointing inward towards each other, set width to swingarm, tighten the set screw on top of the stand legs. Install the rubber blocks.

Notes: Always ensure bottom of swingarm and rubber pads of stand are clean and free of oils. For bikes with aluminum swingarms, lift from behind the weld seam (opposite direction to the front of the bike) to prevent sliding.

When it comes to quality motorcycle stands and lifts, PSR is the brand you can depend on.