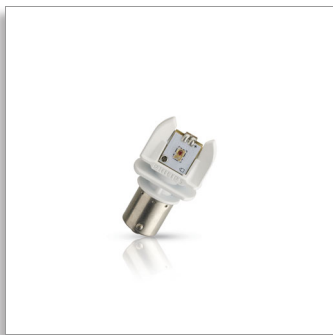




Philips X-tremeVision LED
LED signaling and interior
lighting

1157LED P21W/ 5W

Intense Red
For stop and tail light



12899RX2

PHILIPS

High-performance LEDs

First to market with street-legal exterior LEDs

The Philips X-tremeVision LED exterior lighting are LED bulbs with Intense Red light for stop and tail lights. These high power LED lights let drivers add greater illumination to their cars and provide a perfect geometrical fit.

Drive with style

- Intense Red light for maximum style

Long-lasting LEDs

- High performance LEDs with 12 years lifetime

Fast response time

- Fast response time allows other drivers to immediately react

Street-legal LEDs

- First to market with proven, street-legal exterior LEDs

LED signaling and interior lighting
1157LED P21W/ 5W Intense Red, For stop and tail light

Specifications

Product description

- Application: Stop & Tail light
- Technology: LED
- Type: 1157LED
- Range: X-tremeVision LED
- Designation: 1157 X-tremeVision LED Red
- Also fits: 1157

Marketing specifications

- Expected benefits: High-Performance LEDs
- Product highlight: 12 year-lifespan, street-legal LED

Light characteristics

- Lumens: 130
- Color temperature: Intense red

Electrical characteristics

- Voltage: 12 V
- Wattage: 2 W

Lifetime

- Lifespan: 12 years

12899RX2

Highlights

Long-lasting LEDs



The 12-year lifetime of these OE-quality LED Exterior lights is simply unmatched. Extreme heat and vibration resistance for ultra-long service lifetime.

Drive with style



The new Philips X-tremeVision LED lights let drivers add more style and greater illumination to their cars and are perfect for drivers who want to take their exterior lighting to the next level.

Fast response time

Fast response time for breaking: unlike standard incandescents, our LEDs have an instant-on feature allowing the vehicle behind to immediately react, saving up to 20 ft of distance at a speed of 75 mph.

Street-legal LEDs

Philips has tested X-tremeVision LEDs in a variety of vehicles to meet the DOT regulations and SAE standards. Visit our car data base to check the list of cars appropriate to use the product.