



SCALLOP ROCKER BOX COVERS



PERFORMANCE MACHINE LIMITED WARRANTY INFORMATION

Performance Machine warrants to the original purchaser that the parts of this rocker box cover set to be free of manufacturing defects in materials and workmanship for a period of one (1) year from the date of purchase. In the event warranty service is required, you must call Performance Machine immediately with a description of the problem.

If it is deemed necessary for Performance Machine to make an evaluation to determine whether the part is defective, a return authorization number will be given by Performance machine. The parts must be packaged properly so as to not cause further damage and returned prepaid to Performance Machine with a copy of the original invoice of purchase and a detailed letter outlining the nature of the problem. If after the evaluation by Performance Machine the part was found to be defective it will be repaired or replaced at no cost to you. If we replace it, we may replace it with a reconditioned one of the same design.

Performance Machine shall not be held liable for any consequential or incidental damages resulting from the failure of a Performance Machine part.

Performance Machine shall have no obligation if a part becomes defective as a result of improper installation or abuse.

IMPORTANT NOTICE

Before installing this rocker box cover set, read through these instructions completely; this will familiarize you with the way in which the parts fit together and the tools needed to complete the job.

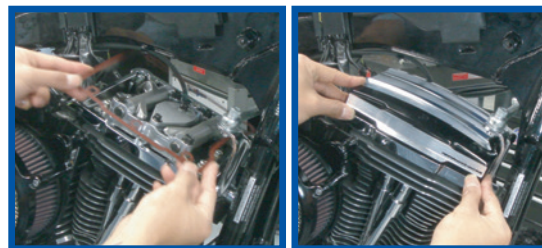
The PM rocker box cover set involves alterations to your motorcycle and may void your factory warranty. PM STRONGLY recommends this installation be done by an experienced motorcycle mechanic.

DISCLAIMER

These Performance Machine parts are designed for high performance motorcycle applications and are intended for the very experienced rider only. The installation of these Performance Machine parts may adversely effect or void your factory warranty.

PERFORMANCE MACHINE SCALLOP ROCKER BOX COVERS INSTALLATION

1. Turn your motorcycle off, place securely on a lift or side stand and disconnect the battery.
2. Remove the fuel tank. **Note:** refer to the HD service manual for additional instructions.
3. With the tank removed, remove the factory rocker box covers. Clean and inspect all sealing surfaces. **Note:** refer to the HD service manual for specific instructions.
4. Install the front rocker box cover gasket (8) and PM rocker box (6) from the right side of the bike (exhaust side). **Disclaimer:** install slowly to avoid damage to the cover or the motorcycle. **Note:** The front Scallop rocker box has an engraved logo.



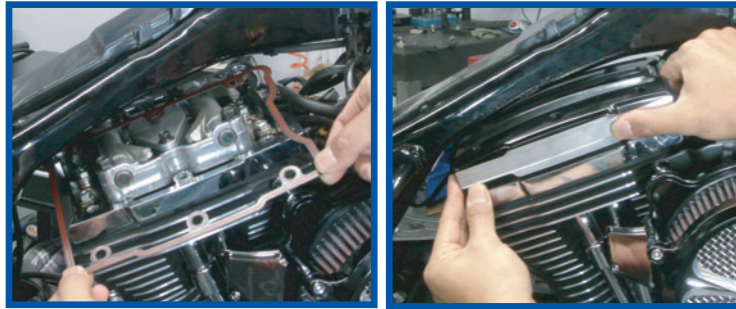
5. Once the PM rocker box cover is in the correct position, insert the 6 supplied 5/16 " bolts (1, 2, 3, 4) and washers (5) and torque to 15-18 ft-lbs using blue threadlocker. **Note:** Review page 2 diagram for proper bolt positions. **Note:** refer to the HD service manuals for specific instructions.



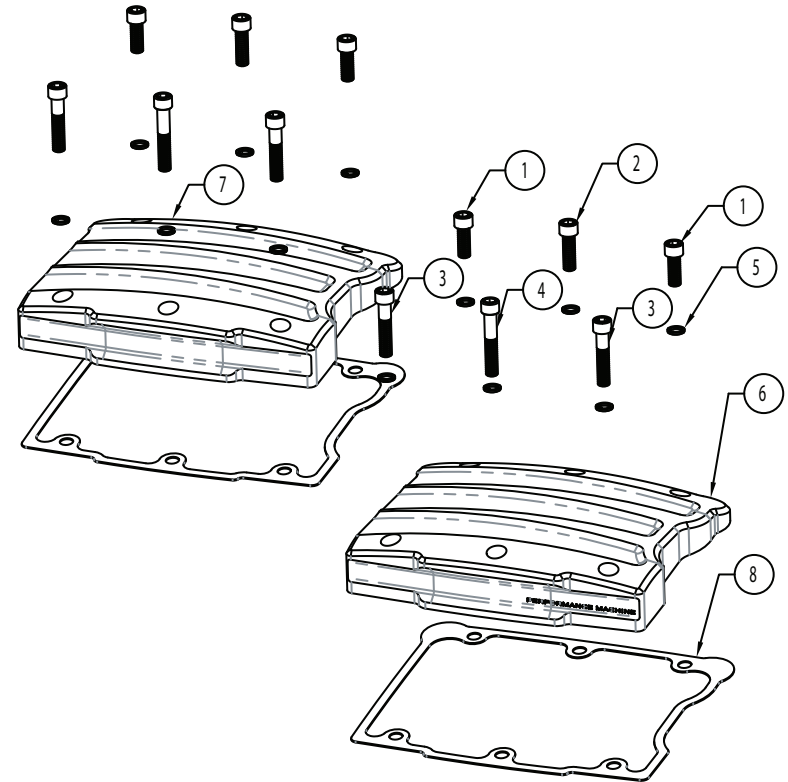
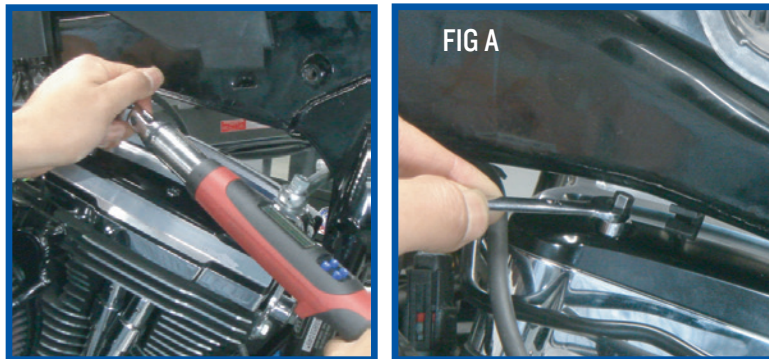


PERFORMANCE MACHINE SCALLOP ROCKER BOX INSTALLATION (CONTINUED)

6. Install the rear rocker box cover gasket (8) and rear PM rocker box (7) from the right side of the bike (exhaust side). **Disclaimer:** install slowly to avoid damage to the cover or the motorcycle.



7. Once the PM rocker box cover is in the correct position, insert the 6 supplied 5/16 " bolts (1, 2, 3, 4) and washers (5) and torque to 15-18 ft-lbs using blue threadlocker. **Note:** Review the diagram to the right for proper bolt positions. **Tip:** On some models there is limited clearance on the rear cylinder so using a small hex driver and wrench will allow easier installation FIG A. **Note:** refer to the HD service manual for specific instructions.



8. Install the fuel tank and any other components that have been removed.

9. Hit the road!

ITEM NO.	DESCRIPTION	QTY.
1	SHCS 5/16-18 X 7/8	4
2	SHCS 5/16-18 X 1 - CHROME	2
3	SHCS 5/16-18 X 1-1/2 CHROME	4
4	SHCS 5/16-18 X 1-3/4, CHROME	2
5	WASHER .316 X .440 X .060, STAINLESS	12
6	TWIN CAM SCALLOP ROCKER COVER BOX, 1999-UP	1
7	TWIN CAM SCALLOP ROCKER BOX COVER 1999-UP (NO PM LOGO)	1
8	GASKET, TWIN CAM ROCKER BOX COVER 1999-UP	2