

EXTRAORDINARY  
MOTORCYCLE  
PRODUCTS



PERFORMANCE MACHINE



YOU HOLD IN YOUR HANDS THE LATEST EDITION OF THE AWARD-WINNING PERFORMANCE MACHINE CATALOG. WITHIN THESE PAGES WE'LL TEMPT YOU WITH THE QUALITY PRODUCTS MOTORCYCLE ENTHUSIASTS HAVE COME TO EXPECT OVER THE PAST FOUR DECADES AND PRESENT TO YOU THE TOOLS TO CUSTOMIZE YOUR OWN RIDE AND BE ONLY ONE.

WE KNOW THAT YOU'RE UNIQUE AND THE MOTORCYCLE(S) IN YOUR LIFE ARE A STATEMENT OF INDIVIDUALISM. WHEN YOU CUSTOMIZE YOUR RIDE, YOU BUILD CHARACTER. WE WANT TO SHOW YOU HOW TO ASSEMBLE YOUR CHARACTER WITH PM'S CONFIDENCE INSPIRING PERFORMANCE PARTS TO GO BEYOND CUSTOM, BEYOND THE STATUS QUO - TO BE ONLY ONE.





PERFORMANCE MACHINE

OVER FOUR DECADES & FORGING FORWARD

INDIVIDUALISM COMES STANDARD. CHARACTER IS BUILT. ICONS ARE REMEMBERED.  
BE ONLY ONE.

# THE EXTRAORDINARY

WHEEL DESIGNS	4
BIG WHEELS	26
WHEEL PRICING	28
COMPONENT PRICING	29
DESIGN FAMILIES	30
CUSTOM FINISH SHOP	31
PM FOR INDIAN®	32
MADE FOR VICTORY®	33
BUILD SHOP	34
PM GARAGE	35
ACCESSORIES	36
AIR CLEANERS	52
BRAKES	58
CONTROLS	64
PRIMARY DRIVE	68
PHATAIL KIT	69
TRIKE WHEELS & BRAKES	70
REPLACEMENT PARTS	71
BE ONLY ONE	72



HARLEY-DAVIDSON® IS A REGISTERED TRADEMARK OF THE HARLEY-DAVIDSON MOTOR COMPANY INC., MILWAUKEE, WI. INDIAN® IS A REGISTERED TRADEMARK OF POLARIS INDUSTRIES, WOODLAND HILLS, CA. VICTORY MOTORCYCLES® IS A REGISTERED TRADEMARK OF POLARIS INDUSTRIES, MEDINA, MN. PERFORMANCE MACHINE IS NOT AFFILIATED WITH HARLEY-DAVIDSON, INDIAN, VICTORY MOTORCYCLES OR ANY OTHER MOTORCYCLE MANUFACTURER.

CAMPAIGN CREATIVE AND DESIGN BY ANDY MEADORS BRANDING. LIFESTYLE PHOTOGRAPHY BY SHANNON BROOKE IMAGERY. PRINTED BY CENVEO, LOS ANGELES. ©2015 PERFORMANCE MACHINE. DESIGNED AND MADE IN THE USA.





## ★ BRAKE TEST



STOCK V-TWIN MOTORCYCLES ARE COMING OUT OF THE FACTORY WITH MORE HORSEPOWER ON TAP THAN EVER. RARELY DOES IT STAY THAT WAY, THOUGH AND THE BULK OF THESE BIKES ARE UPGRADED WITH HIGH PERFORMANCE PIPES, CAMS, AND CARBS AND OTHER GO FAST PARTS. IN AN EFFORT TO INCREASE PERFORMANCE RIDERS OVERLOOK THE VERY SYSTEM DESIGNED TO BRING IT TO A STOP. IN-HOUSE DYNO TESTING ENSURES THAT PM CALIPERS MAINTAIN PROPER PRESSURE, DO NOT FLEX, PROVIDE SUPERIOR STOPPING POWER, AND ALL FUNCTIONING PARTS HOLD UP TO DAILY USE TO BRING YOUR MOTORCYCLE TO A STOP IN A SAFE DISTANCE.

# TESTING & QUALITY



EACH PERFORMANCE MACHINE WHEEL AND BRAKE SYSTEM IS DESIGNED AND ENGINEERED TO SPECIFIC STANDARDS AND THOROUGHLY TESTED. STARTING WITH COMPUTER SIMULATED STRESS ANALYSIS, OUR ENGINEERS ASSESS EACH DESIGN. BUT WE DON'T STOP THERE. WE QUANTIFY OUR FINDINGS WITH DATA FROM PHYSICAL TESTING IN OUR SOPHISTICATED IN-HOUSE TEST DEPARTMENT. PM TESTS TO STRICT WORLD WIDE STANDARDS SUCH AS JASO AND TUV.

## ① CORNERING



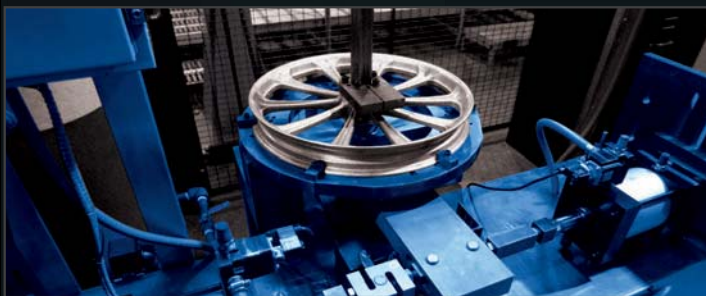
PERFORMANCE MACHINE'S PHYSICAL TESTING BEGINS WITH OUR CORNERING TEST WHERE WE REPRODUCE THE INCREDIBLE STRESS CREATED DURING CORNERING ON A MOTORCYCLE. EACH WHEEL DESIGN IS SUBJECTED TO THIS MECHANICAL TORTURE AND THEN EVALUATED FOR DAMAGE. THE WHEEL IS TESTED AT 2.25 TIMES THE MAXIMUM TIRE LOAD FOR 1,000,000 CYCLES. IF A WHEEL DOES NOT SURVIVE THIS TEST OR ANY OTHER TEST, IT IS SCRAPPED AND REDESIGNED.

## ② RADIAL LOAD



NEXT, THE WHEEL IS LOADED ON OUR GIANT RADIAL LOAD TESTER WHICH SIMULATES A LOAD ON A TIRE/WHEEL ASSEMBLY IN A VERTICAL RIDING CONDITION AT 2.25 TIMES THE MAXIMUM TIRE LOAD FOR 100,000 CYCLES ON A FRONT WHEEL AND 500,000 ON A REAR WHEEL. THE WHEEL IS SPUN UP TO SPEED DURING THESE CYCLES THEN CHECKED FOR FLAWS BEFORE ENDURING THE NEXT PHYSICAL TEST.

## ③ TORSIONAL



THE THIRD TEST IN THE PM REPERTOIRE IS THE TORSION LOAD TESTER WHICH SIMULATES WHAT A WHEEL WOULD ENDURE IF YOU WERE SHIFTING AT WIDE OPEN THROTTLE OR HITTING THE BRAKES TO THE POINT OF SKIDDING FOR 100,000 CYCLES WITH THE HEAVIEST AND MOST POWERFUL PRODUCTION BIKE. LOAD SENSITIVE RAMS CYCLE BACK AND FORTH REPLICATING REAL WORLD STYLE TORTURE IN AN ATTEMPT TO RIP THE HUB OUT OF THE RIM. EACH WHEEL DESIGN IS GIVEN THIS TORTURE TREATMENT BEFORE MOVING ON TO ITS FINAL PHYSICAL TEST.

## ④ IMPACT



THE FOURTH PHYSICAL TEST SENDS EACH PM WHEEL DESIGN TO OUR MASSIVE IMPACT TESTING UNIT WHICH SIMULATES THE POT HOLES AND ROAD HAZARDS THAT A WHEEL IS SUBJECTED TO IN THE REAL WORLD. WE WRAP EACH WHEEL DESIGN WITH A TIRE AND REPLICATE A HARD EDGED HIT; THE WHEEL MUST RETAIN AIR PRESSURE FOR A SPECIFIED AMOUNT OF TIME IN ORDER TO PASS. IF A WHEEL PASSES THIS FINAL TEST IT LIVES TO SEE ANOTHER DAY AND MOVES INTO PRODUCTION.



THE ONE  
EVERLASTING  
FORMULA





# FORMULA



THIS DESIGN HAS THE PERFECT FORMULA OF CONTEMPORARY SIMPLICITY AND A RACE INSPIRED LIGHTWEIGHT TAPERED AND POCKETED 5-SPOKE DESIGN. WITH ENGINEERING DETAILS THAT WILL BE APPRECIATED FOR DECADES TO COME, THIS IS THE ONE WITH EVERLASTING STYLE.



SHOW  
CHROME

Contrast  
*But*

Contrast  
*But*  
PLATINUM

CUSTOM  
PM  
FINISH SHOP



SPEED PAST  
ALL OTHERS  
IN YOUR  
ORIGINAL  
WAY





# DEL REY



THE DEL RAY SPEEDS FAST FORWARD IN STYLE WITH ITS LIGHTENING QUICK DIRECTIONAL SPOKES AND ORGANIC SCULPTED RIM. AS OUR NEWEST MEMBER OF OUR PRESTIGIOUS CONTOUR COLLECTION, THIS HIGH-END WHEEL FLEXES ITS CURVES FROM THE STOUT FORGED BODY. THERE'S ONLY ONE WAY TO BE REMEMBERED, IT'S THE DEL RAY.



CONTOUR  
COLLECTION

SHOW  
CHROME

Contrast  
*But*

Contrast  
*But*  
PLATINUM

CUSTOM  
FINISH SHOP



# RECON



WE WERE INSPIRED BY A LESS-IS-MORE VIEW POINT FOR THE RECON WHEEL - LESS ALUMINUM AND MORE OF NOTHING. LIGHTWEIGHT AND STEALTH-LIKE GRACEFUL BEAUTY, THIS WHEEL'S UNIQUE POWER IS IN THE DETAILS. STOP READING THIS RIGHT NOW AND DO A LITTLE RECON WITH YOUR EYES ON THE WHEEL. DISCOVER THE CAPTIVATING CONTOUR PROFILE SHAPES WITH PERFECT BEVELING AND THE ARMY OF SPEED-DOTS SURROUNDING THE RIM. YOU SURRENDER NOW?



CONTOUR  
COLLECTION

SHOW  
CHROME

Contrast  
*But*

Contrast  
*But*  
PLATINUM

CUSTOM  
FINISH SHOP





# REVEL



REVEL IS A PERFECT 10; 10 SPOKES ELEGANTLY STRETCHING FROM HUB TO RIM IN UTOPIAN UNISON. THE REVEL WHEEL, AS A PART OF THE PREMIUM CONTOUR COLLECTION, IS UNIQUE IN THE FACT THAT THE SPOKES NEAR THE RIM HAVE A MORE EXTRUDED, DIMENSIONAL DESIGN BOASTING HIGH-END ENGINEERING WORK AND CUSTOM DESIGN. GRACEFULLY DESIGNED, THESE PROVOCATIVE SPOKES FEATURE A MACHINE CUT GROOVE STARTING FROM THE EDGE OF THE RIM AND TRAVELS ALL THE WAY TO THE HUB. REVEL IN LUXURY.

CONTOUR  
COLLECTION

SHOW  
CHROME

Contrast  
Cut

Contrast  
Cut  
PLATINUM

CUSTOM  
FINISH SHOP



# SYNDICATE



THIS WHEEL IS A SYNDICATE OF THE BEST DESIGN ELEMENTS FROM OUR BEST SELLING WHEELS. IT'S A GATHERING OF WHAT WORKS WELL IN A WHEEL DESIGN, SIMPLY PUT. BORN FROM THE CONTOUR COLLECTION MEATY ALUMINUM FORGED BLANK, THE SYNDICATE HAS THE FAMOUS FIVE SPOKE DESIGN WITH EXAGGERATED CONTOUR LINES THAT TRANSITION SMOOTHLY ONTO THE RIM WITH MACHINED DETAIL FROM HUB TO EDGE OF RIM AND SUNLIGHT-CATCHING ACCENT GROOVES ON THE VERY EDGE OF THE RIM. NOW THAT WAS A MOUTHFUL! THIS WHEEL HAS IT ALL.



CONTOUR  
COLLECTION

SHOW  
CHROME

Contrast  
*But*

Contrast  
*But*  
PLATINUM

CUSTOM  
FINISH SHOP





# VIRTUE



WE DESIGNED THE VIRTUE WHEEL TO HAVE IT ALL. STARTING WITH THE FACT THAT THIS WHEEL WAS MACHINED FROM A PREMIUM FORGING BLANK THAT HAS MORE BILLET MATERIAL FROM HUB TO RIM; NOTICE THE DIMENSION OF DESIGN WHERE SPOKE MEETS RIM. ADD MACHINE CUT BEAUTY ACCENTS TO THE DIVINE SEVEN SPOKES WITH RIM CUT DETAILING AND YOU'VE GOT A WHEEL THAT STANDS AND SHINES VIRTUOUS ABOVE ALL OTHER WHEELS. RIGHTEOUS INDEED.

CONTOUR  
COLLECTION

SHOW  
CHROME

Contrast  
Cut

Contrast  
Cut  
PLATINUM

CUSTOM  
FINISH SHOP



# DIXON



THE DIXON DESIGN WAS BORN FROM THE PHILOSOPHY OF LUXURY. FROM HUB TO RIM, ITS LONG LEGS ELEGANTLY EXTEND AND BEND AT THE PERFECT POINT OF CONCEPTION, WHILE THE COMPOSITION ON THE RIM BODY GIVES BOUNTY TO ALL ANGLES.



SHOW  
CHROME  
Contrast  
*Cut*  
Contrast  
*Cut*  
PLATINUM  
CUSTOM  
FINISH SHOP





# GASSER



THE GASSER IS FIVE SPOKES OF VINTAGE STYLED ELEGANCE FLOWING SMOOTHLY INTO THE RIM. THE RIM ITSELF FEATURES A CONTOUR RIM LIP, RESULTING IN A GRACEFUL ARC FROM SPOKE TO TIRE.

SHOW  
CHROME

Contrast  
*Cut*<sup>™</sup>

Contrast  
*Cut*<sup>™</sup>  
PLATINUM

CUSTOM  
PM  
FINISH SHOP



# HEATHEN



THE HEATHEN WHEEL BEGINS AS 7 SPOKES AND SPLITS INTO 14 ORNATE TENDRILS BEFORE BLENDING INTO THE RIM CENTER AND THEN FOLLOWS WITH A COMPLIMENTARY DESIGN ON THE OUTER EDGE OF THE SUBTLY CURVING RIM FACE.



SHOW  
CHROME

Contrast  
*Cut*

Contrast  
*Cut*  
PLATINUM

CUSTOM  
*PM*  
FINISH SHOP





# ICON



THE ICON IS ALL CLEAN LINES AND DECADENT DETAILING. WITH A 5 SPLIT-SPOKE DESIGN EXTENDING TO THE EDGES OF THE WHEEL, THE ICON IS FURTHER PUNCTUATED BY MACHINED-OUT DETAILING RUNNING LENGTHWISE ALONG THE RIM BETWEEN EACH SPOKE. EMBODY SHEER LUXURY IN CHROME, OR EVOKE A SLEEKER FORM OF GLAMOUR WITH A BEAUTIFULLY APPLIED PLATINUM CUT FINISH; THIS TIMELESS DESIGN WILL PLEASE FOR YEARS TO COME.

SHOW  
CHROME

Contrast  
*Cut*<sup>™</sup>

Contrast  
*Cut*<sup>™</sup>  
PLATINUM

CUSTOM  
PM  
FINISH SHOP



# LUXE



THE LUXE FEATURES A TIMELESS DESIGN WITH 5 CARVED SPOKES THAT EMERGE FROM THE HUB, SPLIT, AND MELT BACK INTO THE SMOOTH RIM LIP. THE DRAMATIC, MACHINED GROOVES ON THE OUTER RIM LIP RESULT IN A SUBLIME MOTORCYCLE WHEEL.



- SHOW CHROME
- Contrast *Cut*
- Contrast *Cut* PLATINUM
- CUSTOM *PM* FINISH SHOP





# PARAMOUNT



THE PARAMOUNT IS IN A LEAGUE OF ITS OWN WITH SEVEN FLARED SPOKES AND BEAUTIFULLY MACHINED DETAIL FROM THE HUB ALL THE WAY TO THE MACHINED POCKETS OF THE OUTER RIM LIP. THE PARAMOUNT IS AGGRESSIVE ENOUGH TO MAKE A STATEMENT, YET DELIGHTFULLY REFINED.

SHOW  
CHROME

Contrast  
*Cut*  
™

Contrast  
*Cut*  
™  
PLATINUM

CUSTOM  
PM  
FINISH SHOP



# RIVAL



THE RIVAL POSSESSES FIVE RADICAL, SWEEP SPOKES FOR A SINISTER LOOKING MOTORCYCLE WHEEL. EACH SPOKE FEATURES UNMATCHED DETAIL WITH CARVED ALUMINUM WINDOWS AND PROTRUDING EDGES. THE WILD DESIGN AND DIRECTIONAL ORIENTATION OF THE WHEEL GIVE THE ILLUSION OF SPEED, EVEN WHEN IT'S SITTING STILL.



SHOW  
CHROME  
Contrast  
*Cut*  
Contrast  
*Cut*  
PLATINUM  
CUSTOM  
FINISH SHOP





# RIVIERA



THE RIVIERA FEATURES EIGHT LINEAR SPOKES FOR A SIMPLE, YET DEFINED MOTORCYCLE WHEEL. THE FACETED SPOKES SPLIT INTO 16 BEFORE FUSING BACK INTO THE RIM LIP. THE STYLING IS CARRIED ALL THE WAY TO THE SOFT RIM LIP WITH CUSTOM GROOVES FOR A MORE INTENSE LOOK.

SHOW  
CHROME

Contrast  
*Cut*<sup>™</sup>

Contrast  
*Cut*<sup>™</sup>  
PLATINUM

CUSTOM  
PM  
FINISH SHOP



# SHOCK



THE SHOCK WHEEL FEATURES MULTIPLE ENGRAVED GROOVES RACING DOWN EACH OF THE FIVE WIDE SPOKES OF THIS DESIGN. FORCEFUL BY NATURE, THE SHOCK DEMANDS TO BE SEEN AND BELONGS ON A BIKE EQUALLY AS OPINIONATED. BE FLASHY AND COQUETTISH IN CHROME, OR BOLD AND VISUALLY STRIKING IN A PLATINUM CUT, THE SHOCK IS MEANT TO TURN HEADS AND COAX OUT A WHISTLE OF APPRECIATION.



SHOW  
CHROME  
Contrast  
*Cut*<sup>™</sup>  
Contrast  
*Cut*<sup>™</sup>  
PLATINUM  
CUSTOM  
*PM*  
FINISH SHOP





# SUPRA



SPEED IS STYLE. THE SUPRA'S STYLE IS A FAST MOVEMENT FORWARD IN DESIGN AND Demeanor. IT'S POWERFUL VORTEX OF TEN SPEED SPOKES WILL NO DOUBT TURN HEADS AND THEIR MINDS. SYNC UP WITH THE SUPRA AND RIDE TO NEW HEIGHTS.

SHOW  
CHROME

Contrast  
*Cut*<sup>™</sup>

Contrast  
*Cut*<sup>™</sup>  
PLATINUM

CUSTOM  
PM  
FINISH SHOP



# TORQUE



THE TORQUE IS A DIRECTIONAL WHEEL WITH 9 GRACEFULLY ARCED SPOKES, EACH TERMINATING IN A KNIFE LIKE PROFILE AT THE RIM. LOOKS FAST EVEN SITTING STILL!



SHOW  
CHROME

Contrast  
*Cut*

Contrast  
*Cut*  
PLATINUM

CUSTOM  
*PM*  
FINISH SHOP





# WRATH



THE WRATH IS HIGHLY DETAILED 5 SPOKE WHEEL THAT WILL LOOK AT HOME ON THE CLEANEST OF CUSTOMS AS WELL AS ANY HARDCORE CHOPPER. EACH SPAR IS A WORK OF ART THAT EMERGES FROM THE HUB IN A SUBTLE ARC OF BILLET WIZARDRY.

SHOW  
CHROME

Contrast  
*Cut*<sup>™</sup>

Contrast  
*Cut*<sup>™</sup>  
PLATINUM

CUSTOM  
PM  
FINISH SHOP



# DOMINO



THE DOMINO TAKES NINE SPOKES OFF OF THE HUB, SPLITS THEM INTO 18 AND THEN MERGES INTO THE RIM WITH OUR STYLISH SPEED DOTS. IT'LL LOOK RIGHT ON ANY HARLEY OR CUSTOM MOTORCYCLE.



# HOOLIGAN



THE HOOLIGAN IS A STUDY IN MACHINED ALUMINUM DETAILING. GRACEFUL ARCS OF ALUMINUM SPLIT AND FADE OFF AS THE SPOKE TERMINATES INTO THE RIM. CAPPED BY A TRIO OF SPEED DOTS BEG FOR COLOR MATCHED PAINT TO COMPLIMENT YOUR BIKE.





## MERC WIRE



THE MERC WIRE WHEEL SERVES NOSTALGIA TWO WAYS. THE RIBBED CONCENTRIC LINES MACHINED AROUND THE DIAMETER OF THE SMOOTH RIM LIP ARE PAIRED WITH A SET OF CLASSIC SPOKES THAT ARE REMINISCENT OF THE HOT ROD ERA. SUBTLE AND STYLISH, THE MERC IS TIMELESS.

SHOW  
CHROME

Contrast  
*Cut*

Contrast  
*Cut*  
PLATINUM

BLACK  
EPS

## SPOKED WIRE



THE SPOKED WIRE WHEEL IS A PERFECT BLEND OF CLASSIC SPOKE STYLING AND MODERN CNC-MACHINED RIM DETAIL. THE ALUMINUM HOOP, INTEGRATED HUB AND STAINLESS STEEL SPOKES KEEP THESE WHEELS LIGHTWEIGHT, YET STRONG. GIVE YOUR BIKE THE BEST OF BOTH WORLDS.



# BIG WHEELS

SHOW CHROME

Contrast Cut

Contrast Cut PLATINUM

CUSTOM FINISH SHOP

# SHOCK



# ICON

CALL FOR PRICES

26 x 3.5  
CHROME & CONTRAST CUT  
PLATINUM CUT

26 x 3.5 - CONTOUR COLLECTION  
CHROME & CONTRAST CUT  
PLATINUM CUT

30 x 4.0  
CHROME & CONTRAST CUT  
PLATINUM CUT

OUR AMERICAN SOCIETY CALLS IT "KEEPING UP WITH THE JONESES." WE SAY "KEEPING UP WITH THE COLOSSAL." AND WHAT BETTER WAY THAN TO ROLL WITH THE BIGGEST WHEEL IN THE INDUSTRY – THE 26" OR THE 30." EXCESSIVE? YES. NECESSARY? YES. BE THE FIRST IN YOUR CIRCLE TO GO BIG, AND LET EVERYBODY ELSE FOLLOW.

DIXON	FORMULA	ICON	LUXE	PARAMOUNT	SHOCK	SUPRA	WRATH
26" x 3.5" 30" x 4.0"	26" x 3.5" 30" x 4.0"	26" x 3.5" 30" x 4.0"	26" x 3.5" 30" x 4.0"	26" x 3.5" 30" x 4.0"	26" x 3.5" 30" x 4.0"	26" x 3.5" 30" x 4.0"	26" x 3.5" 30" x 4.0"
DOMINO	GASSER	HEATHEN	HOOLIGAN	RIVAL	RIVIERA	TORQUE	
26" x 3.5"	26" x 3.5"	26" x 3.5"	26" x 3.5"	26" x 3.5"	26" x 3.5"	26" x 3.5"	
DEL REY	RECON	REVEL	SYNDICATE	VIRTUE			
26" x 3.5"	26" x 3.5"	26" x 3.5"	26" x 3.5"	26" x 3.5"			

CONTOUR COLLECTION





# BIG WHEEL BRAKE SYSTEM

LUXE



FEATURING AN XTREME MACHINE CUSTOM MOTORCYCLE WITH A 30" CRUISE WHEEL DESIGN.

- 2000-UP FLH TOURING MODELS WITH PM SPECIFIC 16" ROTOR HUB APPLICATIONS
- FITS OTHER 2000 AND UP APPLICATIONS WITH DIFFERENT CALIPER SPACING
- AFTERMARKET BRAKE LINE(S) NECESSARY



MEGABRAKE



16" DISCS

16" DISC | POLISH, CONTRAST CUT

& CONTRAST CUT PLATINUM - CALL FOR

BRAKE SYSTEM | CHROME & CONTRAST CUT - PRICES



THE PM MEGABRAKE 16" ROTOR AND CALIPER COMBINATION IS DESIGNED TO MAINTAIN THE PERFORMANCE OF A DUAL CALIPER SYSTEM WHEN CONVERTING YOUR TOURING MODEL TO SINGLE DISC WITH 21" AND LARGER FRONT WHEELS. BY UTILIZING TWO OF PM'S PROVEN CLASSIC 4 PISTON CALIPERS AND PM'S NEW HIGH PERFORMANCE SILENT FLOATING 16" ROTOR CUSTOMERS CAN NOW CONVERT TO SINGLE DISC ON BIG WHEEL TOURING BIKES WITHOUT CHANGING MASTER CYLINDERS AND CHANGING HYDRAULIC FUNCTION AND PERFORMANCE. BIG WHEELED TOURING BIKES NEED BIG BRAKES AND THIS KIT IS IT.



# WHEEL PRICING

## CONTOUR COLLECTION WHEELS



WE KNOW WE HAVE THE BEST WHEELS ON THE MARKET. BUT DO YOU WANT THE BEST OF THE BEST? WELL HERE YOU GO, IT'S CALLED THE CONTOUR COLLECTION. THIS UNIQUE, HIGH-END COLLECTION OF WHEELS INCLUDES FIVE DESIGNS - THE RECON, REVEL, SYNDICATE, VIRTUE AND THE ALL NEW DEL REY. TAKE A GOOD LOOK AT THESE DESIGNS AND YOU'LL NOTICE THERE'S A WHOLE NEW DIMENSION IN THESE BILLET BEAUTIES. IT STARTS WITH A RE-ENGINEERING OF THE FORGED BLANK BY ADDING MATERIAL FROM THE HUB TO THE RIM-LIP AREA. THIS PROVIDES THE MEANS FOR A DEEPER MACHINE CUT - THEREFORE ADDING THE MOST CUSTOM AND INSPIRING MOTORCYCLE WHEEL DESIGN IN THE WORLD.

## IMAGE SERIES WHEELS



PERFORMANCE MACHINE WHEELS ARE THE FINEST WHEELS AVAILABLE TO THE MOTORCYCLE AFTERMARKET. INNOVATIVE AND STYLISH, THE FIT AND FUNCTION OF PM WHEELS GOES UNMATCHED IN THE INDUSTRY. EACH WHEEL IS TESTED IN-HOUSE TO JASO AND TUV STANDARDS TO ENSURE ITS PERFORMANCE UNDER REAL WORLD RIDING CONDITIONS. PM WHEELS ARE OFFERED IN MANY DIFFERENT STYLES AND SIZES WITH MATCHING COMPONENTS IN A VARIETY OF FINISHES. PM OFFERS CUSTOM FINISHES ON SELECT WHEEL DESIGNS. PM WHEELS ARE OFFERED FOR V-TWIN, METRIC, AND SPORTBIKE APPLICATIONS.

**16x3.5 | 17x3.5**  
**18x3.5 | 19x2.125**

POLISH  
CHROME  
CONTRAST CUT  
PLATINUM CUT

CALL FOR PRICES

**16x5.0 | 17x6.25 | 19x3.0 | 18x4.25**  
**18x5.5 | 21x2.125 | 21x3.5**

POLISH  
CHROME  
CONTRAST CUT  
PLATINUM CUT

CALL FOR PRICES

**16x3.5 | 17x3.5**  
**18x3.5 | 19x2.125**

POLISH  
CHROME  
CONTRAST CUT  
PLATINUM CUT

CALL FOR PRICES

**16x5.0 | 17x6.0 | 19x3.0 | 18x4.25**  
**18x5.5 | 21x2.125 | 21x3.5**

POLISH  
CHROME  
CONTRAST CUT  
PLATINUM CUT

CALL FOR PRICES

**18x8.5 | 23x3.5**

POLISH  
CHROME  
CONTRAST CUT  
PLATINUM CUT

CALL FOR PRICES

**18x10.5**

POLISH  
CHROME  
CONTRAST CUT  
PLATINUM CUT

CALL FOR PRICES

**18x8.5 | 23x3.5**

POLISH  
CHROME  
CONTRAST CUT  
PLATINUM CUT

CALL FOR PRICES

**18x10 | 18x10.5**

POLISH  
CHROME  
CONTRAST CUT  
PLATINUM CUT

CALL FOR PRICES

**26x3.5**

CHROME  
CONTRAST CUT  
PLATINUM CUT

CALL FOR PRICES

**26x3.5**

CHROME  
CONTRAST CUT  
PLATINUM CUT

CALL FOR PRICES

**30x4.0**

CHROME  
CONTRAST CUT  
PLATINUM CUT

CALL FOR PRICES

ADDITIONAL COST FOR V-ROD MODELS.

## WIRE WHEELS



OUR LOVE FOR CLASSIC STYLING HAS INSPIRED OUR LINE OF WIRE WHEELS. FEATURING A SIMPLE 40-SPOKE DESIGN WITH OUR THE TRADEMARK RIM LIP DETAIL THAT PM INTRODUCED TO THE INDUSTRY A FEW YEARS BACK. WHETHER YOU PREFER THE SUBTLE, RIBBED LINES OF THE MERC OR THE MACHINED GROOVES OF THE SPOKED HIGHLIGHTED BY OUR SIGNATURE SPEED DOTS, EACH IS CRAFTED FROM FORGED ALUMINUM HOOPS WITH PROPRIETARY STAINLESS STEEL SPOKES FOR STRENGTH. GET WIRED!

**17x6.0 | 18x4.25 | 18x5.5**  
**21x2.125 | 21x3.5**

CHROME  
CONTRAST CUT  
PLATINUM CUT  
BLACK OPS

CALL FOR PRICES

**18x3.5**

CHROME  
CONTRAST CUT  
PLATINUM CUT  
BLACK OPS

CALL FOR PRICES

**23x3.5**

CHROME  
CONTRAST CUT  
PLATINUM CUT  
BLACK OPS

CALL FOR PRICES

WIRE WHEELS ARE AVAILABLE IN SELECT SIZES AND APPLICATIONS.





# COMPONENT PRICING & SERVICES

## MATCHING DISCS



ALL PERFORMANCE MACHINE DISCS USE A STAINLESS STEEL OUTER BAND. PM USES A HIGH GRADE 420 STAINLESS THAT WILL NOT GAUL OR SQUEAL LIKE LESSER QUALITY DISCS. THE LATEST VERSION OF PM OUTER BANDS CAN BE REMOVED AND REPLACED ONCE WORN. ALL PM DISCS USE A MACHINED ALUMINUM CARRIER AND ARE AVAILABLE IN 11.5", 11.8", 13" AND 16". THE CARRIER IS MATCHED TO ITS RESPECTIVE WHEEL AND WILL HAVE A BOLT PATTERN SPECIFIC TO THE FRONT OR REAR.

### 11.5" | 11.8" DISC

POLISH  
CHROME  
CONTRAST CUT  
PLATINUM CUT

CALL FOR  
PRICES

### 13" DISC

POLISH  
CONTRAST CUT  
PLATINUM CUT

CALL FOR  
PRICES

### 16" DISC

CHROME  
CONTRAST CUT  
PLATINUM CUT

CALL FOR  
PRICES

## MATCHING BELT SPROCKETS



PM BELT SPROCKETS ARE MACHINED TO MIRROR THE PATTERN OF THE PM WHEEL BEHIND IT FOR A COMPLETE CUSTOM LOOK. PM BELT SPROCKETS FEATURE HARD ANODIZED TEETH TO REDUCE WEAR AND EXTEND THE LIFE OF THE PULLEY.

### BELT SPROCKETS

POLISH  
CHROME  
CONTRAST CUT  
PLATINUM CUT

CALL FOR  
PRICES

### UNIVERSAL FL & V-ROD

POLISH  
CHROME  
CONTRAST CUT  
PLATINUM CUT

CALL FOR  
PRICES

## LEAD TIMES



PERFORMANCE MACHINE WHEELS AND MATCHING COMPONENTS (DISCS, BELT SPROCKETS, AND SUPER GAS AIR CLEANER FACEPLATES) ARE MADE TO ORDER. PERFORMANCE MACHINE OR YOUR DEALER WILL QUOTE A LEAD TIME AT TIME OF ORDER. PERFORMANCE MACHINE WORKS DILIGENTLY TO MEET ALL LEAD TIMES, BUT DUE TO THE NATURE OF THE MANUFACTURING BUSINESS ALL LEAD TIMES ARE ESTIMATED.

## CHROME WARRANTY



'SHOW CHROME' IS WHAT YOU GET WITH EVERY PM CHROME PRODUCT. OUR SECRET IS PREPARATION. WE SEND EACH RAW PART TO OUR POLISHING DEPARTMENT, CREATING A MIRROR LIKE FINISH BEFORE THE CHROME IS EVEN LAID ON. THIS PROCESS ALLOWS PM TO CREATE ULTRA SMOOTH AND DURABLE CHROME PLATED PARTS. A LUSTROUS FINISH IS EASY TO MAINTAIN WITH PROPER MAINTENANCE AND CARE. PM INCLUDES A LIFETIME LIMITED WARRANTY ON ALL CHROME PRODUCTS.

## MATCHING CHAIN SPROCKETS



PM CHAIN SPROCKETS ARE MACHINED FROM 7075 T6 ALUMINUM FOR OPTIMAL WEAR. AVAILABLE IN 48 TOOTH COUNT FOR USE WITH 530 CHAIN.

### CHAIN SPROCKETS

POLISH  
CONTRAST CUT  
PLATINUM CUT

CALL FOR  
PRICES

## EURO COMPLIANT



AS THE INDUSTRY LEADER IN THE MOTORCYCLE AFTERMARKET, PERFORMANCE MACHINE HAS BEEN TESTING OUR WHEELS IN-HOUSE USING TUV STANDARDS FOR DECADES. TUV IS THE EUROPEAN STANDARD FOR TESTING AND ALTHOUGH THE PERFORMANCE MACHINE LA PALMA, CA FACILITY HAS RECEIVED TUV CERTIFICATION FROM THE TESTING ENTITY, EACH WHEEL HAS TO BE TESTED BY A EUROPEAN FACILITY IN ORDER TO BE APPROVED FOR STREET USE THROUGHOUT EUROPE.

EACH WHEEL DESIGN AND SIZE, RANGING FROM STOCK REPLACEMENT UP TO 23 X 3.5 AND 18 X 8.5 UNDERGOES RIGOROUS TESTS FOR CORNERING, IMPACT, TORSION, AND RADIAL LOAD BEFORE RECEIVING TUV CERTIFICATION. TUV DESIGNS INCLUDE HOOLIGAN, WRATH, GASSER, RIVIERA, ELEMENT, HEATHEN, TORQUE, LUXE AND DIESEL WHEEL DESIGNS WITH MATCHING DISCS AND BELT SPROCKETS.

## VALUE ADDED SERVICES



PERFORMANCE MACHINE OFFERS THE OPTION TO HAVE MATCHING DISCS, PULLEYS AND TIRES (COST OF TIRES AND BOLT KITS ARE EXTRA) MOUNTED ON PM WHEELS DIRECTLY FROM THE FACTORY AT NO CHARGE. DISCS AND PULLEYS ARE MOUNTED BY PM TECHNICIANS TO ENSURE PROPER CLOCKING AND TORQUE SPECIFICATIONS. THESE VALUE ADDED SERVICES REMOVE THE HASSLE AND THE LIABILITY FOR OUR CUSTOMERS.



# PM DESIGN FAMILIES

IN OUR CUSTOM WORLD, YOU GET TO CHOOSE YOUR OWN GOOD-LOOK'N FAMILY.

TAKE FOR INSTANCE THE APEX FAMILY FEATURED BELOW. THEY'RE AN ALL AMERICAN FAMILY THAT REPRESENT GREAT VALUES IN QUALITY AND DESIGN. OR CHOOSE FROM ELEVEN OTHER GREAT FAMILIES WE OFFER.



## APEX



DASH INSERT



FUEL DOOR



HEADLIGHT



BEZEL



FUEL CAP



GRIPS



PEGS

CONSISTENCY IS A VERY IMPORTANT ELEMENT WHEN IT COMES TO THE OVERALL LOOK AND THEME OF YOUR MOTORCYCLE. THAT'S WHY WE HAVE DEVELOPED DESIGN FAMILIES WITHIN OUR ACCESSORY PORTFOLIO. STUDY THESE DESIGNS, DISCOVER YOUR FAVORITE AND BE A PART OF ONE OF THESE COOL FAMILIES. IF YOUR FAVORITE FAMILY DOESN'T HAVE THE PARTICULAR PART YOU WANT, IT'S REALLY OKAY TO MIX FAMILIES - WE'RE JUST SAY'N!



## ARRAY

AIR CLEANER, HORN COVER, AND FUEL CAP.



## CLEAN

HEADLIGHT, HEADLIGHT BEZEL, EXHAUST TIPS AND IGNITION SWITCH.



## CROSSBAR

HEADLIGHT AND HEADLIGHT BEZEL.



## DRIVE

ENGINE & TRANSMISSION COVERS, AIR CLEANER, SHIFT RODS, BAG LATCHES AND TANK ACCESSORIES.



## Grill

HEADLIGHT, HEADLIGHT BEZEL, FUEL CAP, SHIFT RODS, AND TANK ACCESSORIES.



## HOLE SHOT

SHIFT RODS AND WINDSCREEN TRIM



## Slash

FORK SLIDER COVERS AND EXHAUST TIPS.



## SUPERLIGHT

FLOORBOARDS AND SHIFT RODS



## tech

FORK LEGS AND FORK SLIDER COVERS.



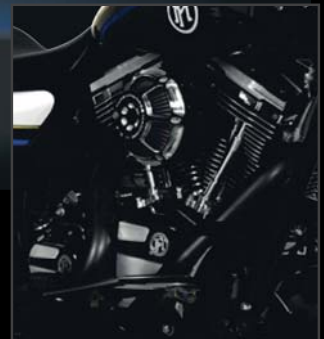
## Merc

WIRE WHEELS, AIR CLEANER, HORN COVER, FUEL CAP, HEADLIGHT, HEADLIGHT BEZEL, WINDSCREEN TRIM, SHIFT RODS, SLIDER COVERS, GRIPS & PEGS, EXHAUST TIPS AND TANK ACCESSORIES.



## SCALLOP

ENGINE & TRANSMISSION COVERS, AIR CLEANER, HORN COVER, FUEL CAP, WINDSCREEN TRIM, BAG LATCHES, SHIFT RODS AND TANK ACCESSORIES.







# PM CUSTOM FINISH SHOP

FINISH WITH AN IMPRESSION



OUR WHEEL DESIGN PORTFOLIO IS CONSIDERED THE MOST INTELLIGENT AND CREATIVE OFFERING IN THE AFTERMARKET INDUSTRY. HOWEVER, PM'S PRODUCT DEVELOPMENT INNOVATION NEVER RESTS, AND ALWAYS THINKS OUTSIDE THE ROUND WHEEL. WHAT WE'RE SHOWING YOU HERE ARE WAYS TO GO BEYOND THE TRADITIONAL CUSTOM WHEEL FINISH, AND ENTER INTO A WORLD OF TEXTURE AND COLOR POSSIBILITIES, PACKAGED AS THE PM CUSTOM FINISH SHOP. GO TO OUR WEBSITE TO SEE YOUR FAVORITE WHEEL DESIGN SHINE IN DIFFERENT WAYS.

## CONTRAST CUT™ PLATINUM CUSTOM COLORS

ADD COLOR AND MAKE YOUR WORLD A BRILLIANT PLACE.



BLACK

GRAY

GOLD

GREEN

BLUE

ORANGE

RED

PINK

\*PM does not color match \*Anodize colors may vary by lot

## OUR FAMOUS FINISHES



PERFECT POLISH

PERFORMANCE MACHINE HAS A REPUTATION FOR SUPPLYING ONLY THE HIGHEST QUALITY POLISHING ON ALL ITS COMPONENTS. THIS IS A PRODUCT OF OUR IN-HOUSE POLISHING SHOP. EACH POLISHER TAKES PRIDE IN SUPPLYING A TOP QUALITY FINISH TO EVERY PRODUCT. THE HIGH LUSTER FINISH IS EASY TO MAINTAIN AND PM CAN RECOMMEND THE PROPER ALUMINUM POLISH TO KEEP IT LIKE NEW.



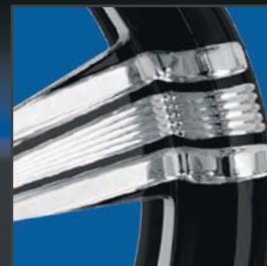
SHOW CHROME™

'SHOW CHROME' IS WHAT YOU GET WITH EVERY PM CHROME PRODUCT. OUR SECRET IS PREPARATION. WE SEND EACH RAW PART TO OUR POLISHING DEPARTMENT, CREATING A MIRROR LIKE FINISH BEFORE THE CHROME IS EVEN LAID ON. THIS PROCESS ALLOWS PM TO CREATE ULTRA SMOOTH AND DURABLE CHROME PLATED PARTS. A LUSTROUS FINISH IS EASY TO MAINTAIN WITH PROPER MAINTENANCE AND CARE.



CONTRAST CUT™

PM'S CONTRAST CUT FINISH STARTS OUT WITH A HIGH QUALITY, EXCEPTIONALLY SMOOTH ANODIZED SURFACE, THE RESULT OF AN INTENSIVE POLISH PREPARATION. ONCE ANODIZED, WE TAKE IT ONE STEP FURTHER TO ACHIEVE THE BOLDNESS OF THE CONTRAST CUT FINISH. AN ANODIZED BLANK HAS ITS' CONTRASTING ACCENTS MACHINED AWAY, ACCENTUATING THE DETAILS OF THE WHEEL DESIGN AND EXPOSING THE RAW ALUMINUM UNDERNEATH.



CONTRAST CUT™ PLATINUM

CONTRAST CUT PLATINUM PICKS UP WHERE THE CONTRAST CUT FINISH LEAVES OFF, AND TAKES IT TO THE NEXT LEVEL BY POLISHING THE EXPOSED ALUMINUM SURFACES TO A MIRROR LIKE FINISH. THIS RESULTS IN A STYLE THAT IS AS VISUALLY STRIKING AS IT IS TIMELESS.



BLACK OPS™

BOASTING A TEXTURED, MATTE FINISH AND HIGH-SHEEN CONTRASTING ACCENTS WHERE THE ALUMINUM HAS BEEN MACHINED AWAY TO GIVE EACH INDIVIDUAL PART ITS OWN STYLE, THIS PROPRIETARY FINISH BRINGS NEW MEANING TO THE DEFINITION OF BLACK.





FOR

# Indian

## MOTORCYCLE

INDIAN MOTORCYCLES WERE A CORNERSTONE OF THE WORLD-WIDE MOTORCYCLE REVOLUTION AT THE START OF THE 20<sup>TH</sup> CENTURY. TODAY THE BRAND STILL CARRIES THAT HOUSEHOLD NAME AND UNIQUE STYLING IN THE MACHINES THEY CREATE FOR THE 21<sup>ST</sup> CENTURY.

WE NOW OFFER INDIAN OWNERS PREMIUM WHEEL DESIGN OPTIONS FOR CUSTOMIZATION TO THEIR MOTORCYCLES IN THE FORM OF OUR SIX MOST POPULAR WHEEL DESIGNS FOR THE SCOUT, CHIEFTAIN, CHIEF CLASSIC, CHIEF DARK HORSE, CHIEF VINTAGE AND ROADMASTER MODELS, PLUS MATCHING FRONT DISCS AND THE INNOVATIVE MAX HP AIR CLEANER FOR THE CHIEFTAIN, CHIEF CLASSIC, CHIEF DARK HORSE, CHIEF VINTAGE AND ROADMASTER MOTORCYCLES.



CHIEFTAIN

SCOUT

GOT A 2015-UP SCOUT OR A 2014-UP CHIEF MODEL? CHOOSE ONE OF THESE TOP RATED WHEELS AND MAKE YOUR INDIAN ONE OF A KIND CUSTOM MOTORCYCLE.

DIXON

HEATHEN

LUXE

PARAMOUNT

SUPRA

WRATH

MAX HP AIR CLEANER



CHIEFTAIN ONLY



AVAILABLE THROUGH BIKER'S CHOICE, J&P CYCLES OR DIRECT FROM PERFORMANCE MACHINE







**MADE FOR**



VICTORY MOTORCYCLES AND PERFORMANCE MACHINE HAVE TEAMED UP IN AN EXCLUSIVE PARTNERSHIP TO BRING MORE CUSTOM ACCESSORY OPTIONS FOR VICTORY MOTORCYCLES. WITH OUR POPULAR FORGED WHEELS AND EXCLUSIVE ACCESSORIES FOR VICTORY, YOU CAN RIDE YOUR VICTORY IN PM STYLE.

**PM WHEELS AND ACCESSORIES AVAILABLE THROUGH YOUR VICTORY DEALER.**

CROSS COUNTRY  
SUEDE PEARL



CROSS COUNTRY  
HAVASU RED



CROSS COUNTRY  
TITANIUM



GUNNER  
SUEDE GREEN



CROSS COUNTRY  
TITANIUM



HIGH-BALL  
BLACK



MAGNUM  
BLACK/STEEL



MAGNUM  
BLACK/RED



MAGNUM  
PEARL/BLACK



COME BUILD A VICTORY MOTORCYCLE WITH PM WHEELS AND ACCESSORIES IN THE ONLINE PM BUILD SHOP TO SEE HOW COOL EVERYTHING LOOKS.

PARAMOUNT



SUPRA



IGNITION  
COVER



AIC  
COVER



CAM  
COVER



PRIMARY  
COVER



CONTOUR  
GRIPS



**BUILD SHOP**



**BUILD YOUR VICTORY ▶**





ONE  
OF  
ONE



TRANSMISSION  
(6 Speed Only)





1999-2016 TWIN CAM MODELS.

# FORMULA COVER LINE



**Contrast Cut** SHOW CHROME



ROCKER BOX

THE FORMULA DESIGN WAS BORN FROM THE CONCEPT OF A CONTEMPORARY, SIMPLISTIC COMPOSITION THAT PAYS HOMAGE TO THE EARLY LIGHTWEIGHT SPOKE RACE WHEELS. WE ADOPTED THOSE SEXY CUES FROM THE FORMULA WHEEL AND ENGINEERED A SET OF ENGINE AND DRIVETRAIN COVERS TO MATCH. THESE CNC-MACHINED COVERS FEATURE STREAMLINED SPOKES STEMMING FROM THE CENTER FOR AN UNFORGETTABLE IMPRESSION. LIKE OUR OTHER COVER LINES, THESE SHIP TO YOU WITH GASKETS AND HARDWARE FOR A NICE D.I.Y INSTALL.



DERBY

CAM/TIMING



INSPECTION



CLUTCH (Cable)  
(Hydraulic)



# DRIVE COVER LINE

1999-2016 TWIN CAM MODELS.



ROCKER BOX



THE DRIVE COVER LINE'S HOT ROD STYLING IS QUINTESSENTIALLY A BIG PART OF PM'S COOL BLUE BLOOD - IT RUNS DEEP IN US AND WE'RE JUST BEING TRUE TO OURSELVES AS DESIGNERS. THE DRIVE'S COMPOSITION ARE SPEED LINES THAT START AND FINISH FAST WITH A MODEST BEVEL TO THE CORNERS, GIVING THE PART A CUSTOM DETAIL THAT IS APPRECIATED. THESE COVERS ARE SIMPLISTIC YET AGGRESSIVE, BOLD YET ELEGANT - THAT DRIVE US FAST FORWARD TO WHAT WILL STILL BE COOL YEARS AND DECADES TO COME. WE'RE NOT MAKING THIS STUFF UP. THIS TYPE OF DESIGN IS INSPIRED FROM OVER 50 YEARS AGO AND IS STILL WAY-COOL TODAY. DRIVE FAST FORWARD AND DRESS YOUR MACHINE'S DRIVETRAIN WITH TIMELESS STYLE.

CALL FOR PRICES



CLUTCH (Cable)  
(Hydraulic)



DERBY



INSPECTION



TRANSMISSION  
(5 or 6 Speed)



CAM/TIMING





1999-2016 TWIN CAM MODELS.

# SCALLOP COVER LINE



**BLACK OPS** **Contrast Cut PLATINUM** **Contrast Cut** **SHOW CHROME**



ROCKER BOX

THE PM SCALLOP LINE WILL PUT THE DEVIL IN THE DETAILS FROM FRONT TO REAR AND TOP TO BOTTOM WITH EVERY COVER POSSIBLE; ROCKER BOX, CAM, CLUTCH, IGNITION, DERBY, INSPECTION, AND TRANSMISSION. EACH BILLET ALUMINUM COVER FEATURES TIMELESS STYLED MACHINED CUT SCALLOPS WITH THE ICONIC PM LOGO. THESE HOT ROD COVERS ARE AVAILABLE IN SHOW CHROME, OUR FAMOUS CONTRAST CUT, AND THE INNOVATIVE BLACK OPS FINISHES. ALL COVERS ARE A DIRECT REPLACEMENT FOR OE COVERS AND ARE SHIPPED WITH HARDWARE AND ALL NECESSARY GASKETS. FITS MOST 1999 AND UP SOFTAIL, DYNA AND TOURING APPLICATIONS.

CALL FOR PRICES



DERBY



INSPECTION



CLUTCH (Cable)  
(Hydraulic)



TRANSMISSION  
(5 or 6 Speed)



CAM/TIMING



IGNITION



# SHIFT RODS

1986-UP FXST & FLH MODELS.

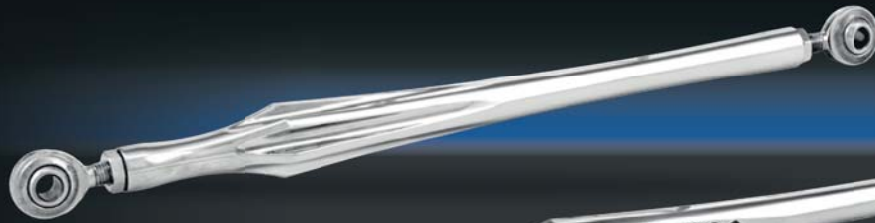


GRILL



CHROME, CONTRAST CUT & BLACK OPS - CALL FOR PRICES

WHETHER YOUR STOCK SHIFT ROD IS THE FIRST THING YOU WANT TO SWITCH OUT FOR A CUSTOM ROD, OR IF IT'S THE LAST PART LEFT TO CUSTOMIZE ON YOUR BIKE - IT'S NOT A BAD IDEA TO MAKE THIS PART OF YOUR MOTORCYCLE LOOK COOL. THE BIKE'S DETAILS ARE ALWAYS APPRECIATED. CHOOSE FROM SIX DESIGNS - MOST OF WHICH ARE A MEMBER OF A PM DESIGN FAMILY.



DRIVE

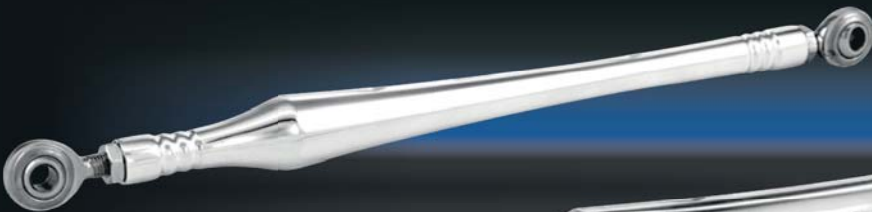


HOLE SHOT

SHOW  
CHROME

Contrast  
Cut

BLACK  
BLACK  
OPS



MERC



SCALLOP



SUPERLIGHT





# TANK ACCESSORIES

2007-UP FLH/T MODELS.

CALL FOR PRICES



DASH INSERTS

2008-Up FLHX, FLTRX  
and H-D Trikes

APEX



FUEL DOORS

2008-Up FLHT, FLHX,  
FLTR and H-D Trikes



IGNITION SWITCHES

2007-13 FLHT, FLHX,  
FLTR and H-D Trikes  
2014-16 FLHT, FLHX,  
FLTR and H-D Trikes

PM IS OFFERING BILLET ACCESSORIES FOR ONE OF MOST VISIBLE AREAS OF YOUR TOURING MOTORCYCLE - THE TOP OF THE TANK. SOLD INDIVIDUALLY OR AS A FAMILY DESIGN GROUP, WE ARE OFFERING REPLACEMENTS FOR YOUR IGNITION SWITCH, FUEL DOOR AND DASH INSERT WITH FIVE DESIGNS FROM OUR EXISTING DESIGN FAMILY OF PARTS: THE APEX, DRIVE, GRILL, MERC, AND SCALLOP DESIGN FAMILY OF PARTS. BOLTING THESE PARTS TO YOUR BIKE HAS GOT TO BE ONE OF THE MOST IMPACTFUL WAYS TO CUSTOMIZE YOUR MACHINE WITHOUT BREAKING YOUR BANK. NOTE THE APEX AND MERC PART GROUP COMES WITH THE SMOOTH DESIGN IGNITION SWITCHES.



DRIVE

GRILL

MERC

SCALLOP

SHOW  
CHROME

Contrast  
Cut



# HEADLIGHT BEZELS

1984-2016 FLHX, FLHR, & FLHTCU MODELS.

APEX      CLEAN

CROSSBAR      GRILL

MERC

SHOW CHROME      Contrast Cut      BLACK OPS

CHROME, CONTRAST CUT & BLACK OPS - CALL FOR PRICE

PERFORMANCE MACHINE VISION SERIES HEADLIGHT BEZELS LEAD THE WAY WITH FIVE METICULOUSLY CRAFTED DESIGNS; THE GRILL, CROSSBAR, MERC, APEX, AND CLEAN WILL HAVE YOU SHEDDING THE STOCK PIECE FOR THESE CUSTOM HALOS IN A QUICK MINUTE. THE 7" BILLET BEZELS ARE COMPATIBLE WITH H-D DAYMAKER LED HEAD LAMPS AND DESIGNED TO MATE WITH FLHX, FLHR, AND FLHTCU MODELS IN CHROME, CONTRAST CUT AND BLACK OPS FINISHES.

# HEADLIGHTS

1984-2016 FXST AND OTHER SELECT MODELS WITH THE USE OF MOUNTS AVAILABLE THROUGH J&P CYCLES®.

SHOW CHROME      Contrast Cut      BLACK OPS

APEX

CLEAN      CROSSBAR

GRILL      MERC



PERFORMANCE MACHINE'S BILLET HEADLIGHTS ARE HEAD AND SHOULDERS ABOVE THE COMPETITION, EMPLOYING A DIAMOND REFLECTOR LENS OVER THE LATEST IN HALOGEN TECHNOLOGY TO MAKE YOUR FUTURE SHINE BRIGHT. AVAILABLE IN FIVE STYLES AND THREE FINISHES, THESE HEADLIGHTS ARE A PART OF THE EVER-EXPANDING LINE OF PERFORMANCE MACHINE ACCESSORIES. AVAILABLE FOR H-D BOTTOM MOUNT 1984-2016 FXST AND OTHER SELECT MODELS WITH THE USE OF MOUNTS AVAILABLE THROUGH J&P CYCLES®.

CHROME, CONTRAST CUT & BLACK OPS - CALL FOR PRICE





# FORK SLIDERS



TECH



SLASH



MERC



FEATURING PERFORMANCE MACHINE'S UNRELENTING STYLE, PM SLIDER COVERS ARE MACHINED FROM BILLET ALUMINUM AND OFFERED IN CHROME, CONTRAST CUT AND BLACK OPS. CHOOSE FROM THE MERC STYLE WITH OUR TRADEMARKED RIBBED RINGS OR THE SLASH FEATURING PRECISELY MACHINED GROOVES WITH A DIAGONAL CUT WHERE THE SLIDER MEETS THE FORK LEGS.

CHROME, CONTRAST CUT & BLACK OPS - CALL FOR PRICE

# LOWER FORK LEGS

FOR 2000-2007 FLT, FLHT, FLHX, FLTR & 2008-2016 FLHT, FLHR, FLHX, FLTR.



TECH

CHROME, BLACK ANO & CONTRAST CUT - CALL FOR PRICE



AFTER OVER 40 YEARS OF BOLTING PM CALIPERS TO STOCK FRONT FORK LEGS WE'VE DEVELOPED A SUPERIOR SET OF LOWER LEGS TO COMPLIMENT OUR WHEELS AND BRAKING SYSTEMS. ARTFULLY SCULPTED FROM HEAT TREATED BILLET ALUMINUM, MACHINED PM ICON LOGO WITH A PIN-STRIPE DETAIL THAT EXTENDS THE LENGTH OF THE FORKS, AND A HIDDEN AXLE DESIGN ALL ADD UP TO THE PERFECT SET OF LEGS. COMBINE WITH PM SLIDER COVERS FOR A COMPLETE CUSTOM FRONT END. KIT CONTAINS AXLE, AXLE COVERS, L&R LEGS WITH CALIPER AND FENDER MOUNTS INSTALLED. CALIPER MOUNTS WILL ACCOMMODATE STOCK H-D CALIPERS OR PM CALIPERS FOR SINGLE OR DUAL DISC, INCLUDING OUR POWERFUL, RACE-INSPIRED 4-PISTON RADIAL MOUNT CALIPER THAT HAS BEEN A STAPLE IN OUR SPORTBIKE OFFERING FOR A DECADE. APPLICATIONS AVAILABLE FOR 2000-07 FLT, FLHT, FLHX, FLTR AND 2008-2016 FLHT, FLHR, FLHX, FLTR.



# EXHAUST TIPS

VANCE & HINES, RHINEHART, SCREAMING EAGLE, SUPERTRAPP, AND KERKER PIPES IN 3.5" OR 4.0" DIAMETER. BASSANI SHORT AND LONG MEGAPHONE.



TECH 10



CHROME, CONTRAST CUT & BLACK OPS

WE'VE TAKEN A SIMPLE, BILLET PIECE OF ALUMINUM AND TURNED IT INTO WORKS OF ART FOR YOUR EXHAUST. FIVE CUTTING-EDGE DESIGNS INCLUDING THE CLEAN, TECH 10, SLASH, SWEEPER AND THE HOT ROD INSPIRED MERC WILL SLIP-ON TO VANCE & HINES, RINEHART, SCREAMING EAGLE, SUPERTRAPP, AND KERKER PIPES IN 3.5" OR 4.0" DIAMETERS. PM TIPS WILL ALSO FIT BASSANI SHORT AND LONG MEGAPHONE APPLICATIONS. EACH TIP FEATURES MACHINED CUTS AND GROOVES, GIVING EACH ROUND DEPTH AND DIMENSION BOTH INSIDE AND OUT. NO MATTER WHAT ANGLE YOU FIND YOURSELF ADMIRING THESE TIPS, THEY'RE DEFINITELY SEXY. EACH TIP IS EMBELLISHED WITH THE PERFORMANCE MACHINE LOGO AND AVAILABLE IN CHROME AND CONTRAST CUT FINISH.



CLEAN



MERC



SWEEPER



SLASH

SHOW  
CHROME

Contrast  
Cut

BLACK  
BLACK  
OPS





1991-2016 BIG TWIN MODELS.

# HORN COVERS



CHROME, CONTRAST CUT, CONTRAST CUT PLATINUM & BLACK OPS - CALL FOR PRICE



ARRAY

CREATED WITH AN EYE ON STYLE, PERFORMANCE MACHINE HAS ADDED A LINE OF HORN COVERS TO HELP YOU IN YOUR QUEST FOR CUSTOM. PROVIDING THE OPTIONS YOU CRAVE IN THE TOO COOL DESIGNS YOU LOVE. IF YOU'RE WONDERING WHAT PURPOSE THESE PARTS SERVE TO THAT WE SAY THEY SERVE THE PURPOSE OF LOOKING GOOD, SOMETHING WE CAN ALL APPRECIATE. THESE CNC MACHINED BEAUTIES ARE AVAILABLE FOR 1991-2016 BIG TWIN MODELS.

SHOW CHROME

Contrast Cut

Contrast Cut PLATINUM

BLACK OPS



SCALLOP



MERC



# BAG LATCHES

MOST 1984-2016 FLH MODELS.



DRIVE



CHROME & CONTRAST CUT

SHOW CHROME Contrast Cut™

SMOOTH



FLUTED



SCALLOP

ARE YOU LOOKING TO CUSTOMIZE YOUR BIKE EFFECTIVELY AND EFFICIENTLY WITH YOUR TIME AND MONEY? THINK ABOUT ATTACHING A PAIR OF OUR DESIGN MACHINED LATCHES TO YOUR BAGS AND TURN SOMETHING ORDINARY INTO COOL LOOKING. PM LATCH COVERS UTILIZE OE LOCKING MECHANISM AND ARE EASY TO INSTALL WITH BASIC TOOLS.

# FUEL & DUMMY CAPS

LATE 1996-2016 H-D MODELS.



ARRAY



GRILL



APEX  
w/ LED Gauge



SHOW CHROME Contrast Cut™ BLACK CAPS

FUEL & DUMMY CAPS -  
LED GAUGE CAPS



SCALLOP



MERC

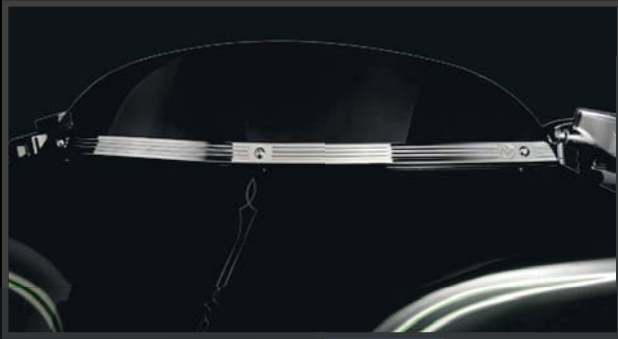
\*LED lenses are clear and color shows only when illuminated.

A FUEL CAP SITS ON TOP OF THE TANK LIKE A CROWN ON A QUEEN'S HEAD. HARLEY-DAVIDSON MOTORCYCLES NEED TO BE HONORED WITH A PERFORMANCE MACHINE CUSTOM CROWN FOR THEIR FUEL TANKS. THROW AWAY THAT OEM PIECE OF CAP, AND SCREW-IN A PREMIUM PM COOL CAP FOR A HIGH-END LOOK OF ROYALTY, WITHOUT THE HIGH-END PRICE. CNC'D FROM AIRCRAFT GRADE ALUMINUM, OUR UNIQUE VENTED FUEL CAPS ARE AN INSTANT CUSTOM ADDITION TO 1996-UP H-DS AND COMPLIMENTS OUR CURRENT COVER LINE OF ACCESSORY DESIGNS. EACH DESIGN IS OFFERED IN A STANDARD FUEL CAP, FUEL DUMMY CAP, AND LED FUEL GAUGE. THE PM PROPRIETARY LED FUEL GAUGE IS USER PROGRAMMABLE FOR MULTIPLE APPLICATIONS AND FEATURES BRIGHT LED LIGHTS THAT ENERGIZE WHEN FULL AND SHUT OFF AS FUEL LEVEL DROPS.





# WINDSCREEN TRIM



1998-2016 FLH

MERC

SCALLOP

HOLE SHOT

SHOW  
CHROME

Contrast  
Cut

BLACK  
OPS

CHROME, CONTRAST CUT  
& BLACK OPS

WITH A LEAVE NOTHING UNDONE PHILOSOPHY WE COULDN'T OVERLOOK THE NEED FOR CUSTOM WINDSCREEN TRIM TO DISTINGUISH YOUR FAIRING FROM THE SEA OF STOCK. CNC LASER CUT FROM 6061-T6 ALUMINUM AND PRECISION MACHINED FOR A PERFECT FIT THE SCALLOP, MERC, AND HOLE SHOT DESIGNS COMPLEMENT PM'S EVER GROWING LINE OF ACCESSORIES. AVAILABLE IN CHROME, CONTRAST CUT AND BLACK OPS FOR 1998-2016 FLH/T WITH CHROME PLATED HARDWARE.

SHOW  
CHROME

Contrast  
Cut

BLACK  
OPS

2015-2016 FLTR

MERC

SCALLOP

HOLE SHOT

NEW FOR 2016

CHROME, CONTRAST CUT  
& BLACK OPS

1998-2013 FLTR

MERC

SCALLOP

HOLE SHOT

CHROME, CONTRAST CUT  
& BLACK OPS



# LUGGED HANDLEBARS

STANDARD - SOFTAIL,  
DYNA & SPORTSTER  
10", 12", 14", 16" RISE  
34.5", 35" WIDTH  
7" PULLBACK

ROAD GLIDE  
12", 14" RISE  
36.5", 37" WIDTH  
2.5" PULLBACK

STREET GLIDE  
12", 14" RISE  
36", 36.5" WIDTH  
9" PULLBACK



SHOW  
CHROME

BLACK  
POWDERCOAT

BLACK POWDERCOAT  
- CHROME -



TBW PLUG

PM'S DESIGN AND ENGINEERING TEAM SET OUT TO CREATE THE BEST HANDLEBARS ON THE MARKET WITH RELATIVELY SIMPLE CRITERIA; THEY HAVE TO BE STRONG, CLEAN, AND INNOVATIVE. USING CNC TUBE BENDING, LASER CUTTING, AND WELDING TECHNOLOGY WE DEVELOPED AN ARTISTICALLY SCULPTED CUT BLENDING THE 1.25" TUBING SMOOTHLY INTO THE UPPER 1.0" TUBING. DOUBLE WALL MANUFACTURING CREATES STRENGTH WHERE IT'S NEEDED BALANCING WEIGHT AND STYLE. PM'S LUGGED BARS WERE SENT THROUGH OUR DESTRUCTIVE TEST LAB INSURING THESE ARE TRULY THE BEST ON THE MARKET. GRAB YOURS IN SHOW CHROME OR GLOSS BLACK POWDERCOAT FINISHES FOR TBW AND NON-TBW APPLICATIONS.

# EXTENDED KICKSTAND



MOST 1984-2016 FLH MODELS.



SHOW  
CHROME

CHROME

RUNNING A 21" OR 23" FRONT WHEEL? YOU MAY WANT TO CONSIDER OUR EXTENDED KICKSTAND. CRAFTED FROM FORGED STEEL WITH A CHROME FINISH, PM'S 1" EXTENDED KICKSTAND IS A DIRECT REPLACEMENT FOR THE OEM UNIT. IT WILL GIVE YOU BACK THE COUPLE DEGREES THAT YOU CAN LOSE WITH ANY CUSTOMIZATION MAKING IT EASIER TO LEAN YOUR BIKE BACK TO RIDING POSITION.





MOUNTS TO PM HAND CONTROLS AS WELL AS STOCK AND MOST AFTERMARKET CONTROLS.

# VISION SERIES MIRRORS



SHOW  
CHROME  
Contrast  
Cut™



ARROW

CHROME & CONTRAST CUT



ARROW XL



BLADE



OVAL



ROUND

LOOKING BACK HAS NEVER LOOKED SO GOOD! PM VISION SERIES MIRRORS ARE DESIGNED TO PROVIDE AMPLE VISIBILITY SIDE TO SIDE AND BEHIND WHERE OUR OWN PERIPHERAL VISION CALLS IT QUITS. THE VISION SERIES LINE OFFERS AN EYEFUL WITH FIVE UNIQUE MIRROR HEADS AND SMART AMBIDEXTROUS STEMS TO SUIT YOUR TASTE AND RIDING STYLE. FULLY ADJUSTABLE AND VIBRATION TESTED SO YOU NEVER LOSE SIGHT THE ARROW, ARROW XL, OVAL, ROUND, AND BLADE MIRRORS WILL MOUNT TO PM HAND CONTROLS AS WELL AS STOCK AND MOST AFTERMARKET CONTROLS. MIRRORS ARE SOLD SEPARATELY AND ARE AVAILABLE IN CHROME AND CONTRAST CUT FINISHES.

## TORQUE MIRROR

MOUNTS TO PM HAND CONTROLS AS WELL AS STOCK AND MOST AFTERMARKET CONTROLS.



SHOW  
CHROME  
BLACK  
ANO

PM TORQUE MIRRORS FEATURE A COMPLETELY UNIQUE MIRROR HEAD WITH A MATCHING MACHINED ALUMINUM STEM. BOLTS TO ALL PM HAND CONTROLS, AS WELL AS STOCK AND MANY OTHER AFTERMARKET CONTROLS. LEFT AND RIGHT MIRRORS ARE SOLD SEPARATELY.

CHROME & BLACK ANO

## FL MIRROR

1996-2016 FLH MODELS.



PERFORMANCE MACHINE FL MIRRORS ARE DESIGNED FOR OPTIMAL VIEW WHILE STILL FLOWING PERFECTLY WITH THE LINES OF THE FAIRING. INCLUDES A COMPLETE MOUNTING SYSTEM.

CHROME & BLACK ANO



# PEGS

MATCHING FOOT PEGS ARE DESIGNED TO MOUNT TO STOCK H-D CLEVIS. MATCHING TOE PEGS ARE SOLD SEPARATELY.



OVERDRIVE



- CONTOUR & ELITE PEGS -
- MERC & APEX PEGS -
- OVERDRIVE PEGS -
- XLS & CONTOUR XL PEGS -
- CONTOUR PEGS (FOR PM FOOT CONTROLS) -
- CONTOUR & ELITE TOE PEG -
- XLS TOE PEG -
- OVERDRIVE, MERC & APEX TOE PEG -

PERFORMANCE MACHINE FOOT PEGS ARE DESTINED TO BE PAIRED WITH PM GRIPS. WE HAVE TAKEN THE STYLING AND COMFORT OF PM GRIPS AND DEVELOPED A LINE OF PEGS THAT MOUNT DIRECTLY TO YOUR STOCK H-D CLEVIS AND WILL HAVE YOU PUTTING ON THE MILES EFFORTLESSLY.



MERC



APEX



ELITE



XLS



RUBBER WRAPPED



CONTOUR





PM GRIPS ARE OFFERED FOR 1" BARS AND ARE ALSO AVAILABLE TO FIT MODELS WITH ELECTRONIC THROTTLE.

# GRIPS



CONTOUR & ELITE GRIPS -  
 MERC & APEX GRIPS -  
 OVERDRIVE GRIPS -  
 XLS & CONTOUR XL GRIPS -



## OVERDRIVE

NEW FOR 2016 ARE A MATCHING LINE OF HANDLE GRIPS, FOOT PEGS, AND TOE PEGS IN THE POWER HUNGRY NEW OVERDRIVE DESIGN. THIS NEW ADDITION TO THE LEGENDARY PM GRIP AND PEG LINEUP WILL BE SURE TO HAVE YOU ITCHING TO ROLL THE THROTTLE BACK AND HIT THE OPEN ROAD IN OVERDRIVE. THE FACETTED-MACHINED ACCENTS WILL GRAB EVERYONE'S ATTENTION WHILE YOU RIP THROUGH THE GEARS ON YOUR FAVORITE STRETCH OF HIGHWAY.

OUR COMPLETE LINE OF GRIPS ARE OFFERED FOR 1" BARS AND ARE AVAILABLE TO FIT MODELS WITH ELECTRONIC THROTTLE AND SELECT METRIC APPLICATIONS.

SHOW  
CHROME

Contrast  
Cut™

BLACK  
ANO

MERC



APEX



ELITE



CONTOUR



CONTOUR XL



XLS



CHOOSE  
YOUR  
OWN  
WAY





# JET



THE JET AIR CLEANER WAS CREATIVELY FORMED FOR ULTIMATE FUNCTION SO YOU CAN HAVE YOUR CAKE AND EAT IT TOO. IT'S UNIQUE, INNOVATIVE BODY MOUNTS TO EITHER A SPEEDY HORIZONTAL POSITION OR A STYLISH VERTICAL VERSION - SO YOU DECIDE.

CHROME, CONTRAST CUT & BLACK OPS

1993-2016 TWIN CAM & EVO  
2008-2016 THROTTLE BY WIRE  
1991-2016 XL SPORTSTER

SHOW  
CHROME

Contrast  
Cut

BLACK  
OPS



PM AIR CLEANERS ARE NOT LEGAL FOR SALE ON POLLUTION CONTROLLED VEHICLES IN CALIFORNIA OR STATES ADOPTING CALIFORNIA EMISSIONS STANDARDS



# AIR CLEANERS

1993-2016 TWIN CAM & EVO  
2008-2016 THROTTLE BY WIRE  
1991-2016 XL SPORTSTER



DRIVE



CHROME, CONTRAST CUT, CONTRAST CUT PLATINUM & BLACK OPS

SHOW CHROME

Contrast Cut

Contrast Cut PLATINUM

BLACK OPS

WE WERE INSPIRED TO DESIGN A SERIES OF AIR CLEANERS THAT BOASTS AN INDUSTRIAL POLYGON SHAPE TO FOLLOW THE LINES OF THE V-TWIN WITH DETAIL ASCENTS TO BE ORGANIC TO THE MECHANICAL LOOKING NATURE OF THE BEAUTIFUL ENGINE AND DRIVETRAIN. CHOOSE FROM THREE DESIGNS AND FOUR FINISHES TO MAKE YOUR MOTORCYCLE A STATEMENT OF CUSTOM.



SCALLOP



ARRAY



PM AIR CLEANERS ARE NOT LEGAL FOR SALE ON POLLUTION CONTROLLED VEHICLES IN CALIFORNIA OR STATES ADOPTING CALIFORNIA EMISSIONS STANDARDS



# FASTAIR INTAKE

1993-2016 TWIN CAM & EVO  
2008-2016 THROTTLE BY WIRE  
1991-2016 XL SPORTSTER  
1993-2006 BIG TWIN W/S&S E/G CARB



CHROME, CONTRAST  
CUT & CONTRAST CUT  
HYBRID

SHOW  
CHROME

Contrast  
Cut

Contrast  
Cut  
HYBRID



PM'S FASTAIR INTAKE UTILIZES THE HIGHEST QUALITY AND BEST PERFORMING K&N FILTER ELEMENT ALLOWING A 10.21 HP INCREASE ON A STOCK HARLEY DAVIDSON. NOT ONLY DOES THIS INTAKE MAKE HORSEPOWER BUT IT THE MOST INNOVATIVE AND AGGRESSIVE LOOKING INTAKE ON THE MARKET. LEAVE IT TO PM TO RAISE THE BAR BY CREATING BEAUTIFUL BILLET PIECES LITERALLY LACED TOGETHER TO BEAUTIFY THAT HIGH PERFORMANCE AIR FILTER. WE ALSO ADDED PM'S PROVEN INTERNAL CRANKCASE BREATHER SYSTEM TO CREATE A CLEAN LOOK. ONCE AGAIN PM HAS CREATED A TRULY INNOVATIVE AND UNIQUE PIECE TO TAKE YOUR BIKE TO THE NEXT LEVEL.

# THROTTLE SERVO COVER

SHOW  
CHROME

BLACK  
ANO

CHROME & BLACK ANO



THE THROTTLE SERVO COVER IS JUST THAT; A SIMPLE, ATTRACTIVE COVER THAT MASKS THE UNSIGHTLY THROTTLE SERVO ON THROTTLE BY WIRE MODELS. THE PM PIECE IS A UNIQUE, SLIM, 2-PIECE DESIGN WITH A UNIVERSAL FIT FOR ALL PM AIR CLEANERS. COVERS ARE EASY TO INSTALL AND AVAILABLE IN CHROME AND BLACK ANODIZED FINISHES.

PM AIR CLEANERS ARE NOT LEGAL FOR SALE ON POLLUTION CONTROLLED VEHICLES IN CALIFORNIA OR STATES ADOPTING CALIFORNIA EMISSIONS STANDARDS



# MAX HP

1993-2016 TWIN CAM & EVO  
2008-2016 THROTTLE BY WIRE  
1991-2016 XL SPORTSTER



CHROME, CONTRAST CUT & BLACK OPS

SHOW  
CHROME

Contrast  
Cut

BLACK  
OPS

THE MAX HP AIR CLEANER ISN'T JUST ANOTHER PRETTY BOLT-ON ACCESSORY THAT LACKS SUBSTANCE. THE NEWEST ADDITION TO OUR AIR CLEANER LINE-UP FEATURES AN INNOVATIVE, CONICAL SHAPE FOR DRAMATICALLY IMPROVED KNEE CLEARANCE, AN INTERNAL POWER CONE DESIGN FOR SMOOTH, LAMINAR AIR FLOW, PLUS A HIGH FLOW REUSABLE AIR FILTER TO GIVE IT LIFE. LIGHTWEIGHT ALUMINUM DESIGN, INTERNAL RUBBER BREATHER TUBES TO ELIMINATE OIL LEAKAGE AND EASY INSTALLATION ALL SUPPORT THE MAX HP'S STUNNING GOOD LOOKS. AND, IT'S MADE RIGHT HERE IN THE USA IN CHROME, CONTRAST CUT, AND BLACK OPS FINISHES WITH GASKETS AND HARDWARE INCLUDED.

# MERC

1993-2016 TWIN CAM & EVO  
2008-2016 THROTTLE BY WIRE  
1991-2016 XL SPORTSTER  
1993-2006 BIG TWIN W/S&S E/G CARB



CHROME, CONTRAST CUT & BLACK OPS

SHOW  
CHROME

Contrast  
Cut

BLACK  
OPS

PERFORMANCE MACHINE DOES NOT BELIEVE IN RESTING ON OUR LAURELS, PREFERRED INSTEAD TO PUSH THE ENVELOPE WITH NEW DESIGNS AND PRODUCTS. THE FACT IS FRONT AND CENTER IN OUR ONGOING QUEST TO IMPROVE AND EXPAND UPON OUR LINE OF AIR CLEANERS. THE SUPER GAS MERC AIR CLEANER CRUISES FIRMLY INTO NOSTALGIA TERRITORY, ADDING SOME HOT ROD FLAIR TO THE STYLING OF OUR ORIGINAL SUPER GAS AIR CLEANER. WITH CLEAN LINES AND MORE CURVES THAN A PIN-UP, THIS PIECE FEATURES RIBBED CONCENTRIC CIRCLES AND THE PERFORMANCE MACHINE LOGO MACHINED INTO THE CENTER. EQUIPPED WITH A K&N AIR FILTER, THE MERC OFFERS OPTIMAL AIR FLOW AND MORE HORSEPOWER THAN THE STOCK ALTERNATIVE.



PM AIR CLEANERS ARE NOT LEGAL FOR SALE ON POLLUTION CONTROLLED VEHICLES IN CALIFORNIA OR STATES ADOPTING CALIFORNIA EMISSIONS STANDARDS





SHOW CHROME Contrast Cut PLATINUM

1993-2016 TWIN CAM & EVO  
 2008-2016 THROTTLE BY WIRE  
 1991-2016 XL SPORTSTER  
 1993-2006 BIG TWIN W/S&S E/G CARB

# SUPER GAS



UNIVERSAL SUPER GAS

FIND YOUR FACEPLATE

IT'S MATCHED

- UNIVERSAL SUPER GAS -
- SUPER GAS FACEPLATE -
- SCREAMIN EAGLE/NESS UPGRADE KIT -
- 58MM THROTTLE BODY UPGRADE KIT -
- PULLOVER RAIN SOCK -
- RAIN SOCK -
- SCRUB BAG -



PULLOVER RAIN SOCK

SCRUB BAG

RAIN SOCK

THE SUPER GAS AIR CLEANER FEATURES A VERSATILE DESIGN THAT ACCEPTS INTERCHANGEABLE FACEPLATES DESIGN MATCHED TO PERFORMANCE MACHINE WHEELS. A K&N FILTER BEHIND A STAINLESS STEEL WIRE MESH SCREEN ALLOW HIGH VOLUME AIR FLOW RESULTING IN INCREASED HORSEPOWER. THE SUPER GAS AIR CLEANER IS CNC-MACHINED FROM BILLET ALUMINUM WITH BUILT-IN CRANK CASE BREATHERS AND COMES WITH CHROME HARDWARE.

THE SCREAMIN' EAGLE/NESS UPGRADE KIT ADAPTS A PM DESIGNED MATCHED FACEPLATE TO FIT THE SE/NESS AIR CLEANERS. THE UPGRADE KIT INCLUDES THE MESH INSERT, SPACER, HARDWARE, AND THE PM LOGO BADGE. FACEPLATES ARE SOLD SEPARATELY.



DEL REY

DIXON

DOMINO

FORMULA

GASSER

HEATHEN

HOOLIGAN



ICON

LUXE

PARAMOUNT

RECON

REVEL

RIVAL

RIVIERA



SHOCK

SUPRA

SYNDICATE

TORQUE

VIRTUE

WRATH

PM SUPER GAS AIR CLEANERS AND DESIGN MATCHED FACEPLATES ARE SOLD SEPARATELY. ORDER THE PM UNIVERSAL AIR CLEANER IN CHROME OR BLACK AND THEN CHOOSE A DESIGN MATCHED FACEPLATE TO COMPLIMENT YOUR WHEELS.

PM AIR CLEANERS ARE NOT LEGAL FOR SALE ON POLLUTION CONTROLLED VEHICLES IN CALIFORNIA OR STATES ADOPTING CALIFORNIA EMISSIONS STANDARDS



# RADIAL MOUNT CALIPERS & BRACKETS

## FRONT 4 PISTON RADIAL MOUNT CALIPER & BRACKET



SHOW  
CHROME

Contrast  
Cut



CHROME (CALIPER)

CHROME (BRACKET)

CONTRAST CUT (CALIPER)

BLACK ANO (BRACKET)

HARDWARE KIT REQUIRED AT EXTRA CHARGE. APPLICATION SHOWN DOES NOT REQUIRE A BRACKET.

### RADIAL MOUNT CALIPERS... THEY'RE NOT JUST FOR SPORTBIKES ANYMORE!

PM RADIAL MOUNT CALIPERS HAVE SPENT SEVERAL YEARS ON THE GP RACE CIRCUIT AND HAVE BEEN AVAILABLE FOR SPORTBIKES AND CUSTOMS FOR QUITE A WHILE. NOW YOU CAN UPGRADE YOUR 2000-UP HARLEY-DAVIDSON WITH THE PERFORMANCE ADVANTAGE OF PM RADIAL MOUNT CALIPERS. ANCHORING THE CALIPER NEXT TO THE ROTOR'S ENTRANCE POINT AND EXIT POINT YIELDS A CALIPER THAT IS STIFFER THAN TRADITIONAL CALIPERS AND HOLDS A MORE PRECISE CALIPER TO ROTOR ALIGNMENT. THE FOUR BRAKE PAD RACE STYLE DESIGN PROVIDES IMPROVED PAD CONTACT, MINIMIZED HEAT BUILD UP, IMPROVED BRAKING FEEL, AND MORE BITE WHEN YOU NEED IT! THE PM RADIAL MOUNT CALIPER IS HIGHLY ENGINEERED TO REDUCE FLEX AND OFFERS GREAT EXOTHERMIC CAPABILITIES WHICH RESULTS IN A PHENOMENAL UPGRADE TO STOCK CALIPERS. BY SIMPLY USING ONE OF OUR RADIAL MOUNT ADAPTER KITS, ANY 2000-UP HARLEY-DAVIDSON CAN EASILY BE CONVERTED TO PM RADIAL MOUNT BRAKING TECHNOLOGY ON APPLICATIONS WITH 11.5", 11.8", OR 13" ROTORS (EXCEPT SPRINGER MODELS). ADAPTER BRACKETS ARE AVAILABLE FOR LEFT AND RIGHT SIDE FOR SINGLE AND DUAL DISC CONFIGURATIONS.

## REAR 4 PISTON RADIAL MOUNT CALIPER WITH BRACKET



SHOW  
CHROME

Contrast  
Cut

CHROME (CALIPER)

CONTRAST CUT (CALIPER)





FOR MOST 1984-2016 MODELS.

# VINTAGE BRAKE CALIPERS



MACHINE OPSTM

**CHROME** (CALIPER ONLY)

**BLACK OPS & MACHINE OPS** (CALIPER ONLY)

PERFORMANCE MACHINE HAS BROUGHT OUR MODERN BRAKING TECHNOLOGY TO ONE OF THE ORIGINAL CALIPERS THAT PUT US ON THE MAP FOR AMERICAN MADE H-D BRAKING SYSTEMS BACK IN THE SEVENTIES. THE VINTAGE CALIPER GETS ITS BRAKING POWER FROM PM'S PROVEN 4-PISTON INTERNALS, BUT WE'VE TAKEN THE STYLING CUES FROM OUR ORIGINAL DUAL ACTION CAST CALIPER. THE REMINISCENT, CNC-MACHINED FINS GIVE THE CALIPER ITS VINTAGE STYLE WHILE KEEPING THE CALIPER COOL AND PROVIDING OPTIMAL BRAKING POWER WITH NO FLEX. DESIGNED WITH THE VINTAGE CALIPER IN MIND, THE MACHINE OPSTM FINISH FEATURES A COMBINATION OF OUR INNOVATIVE OPS TREATMENT AND OUR STUNNING MACHINE FINISH COVERED WITH BRIGHT CLEAR ANO FOR A VINTAGE LOOK THAT IS DURABLE AND EASY TO CARE FOR. CHOOSE YOUR ACCENT BOLT FROM THE AVAILABLE CHROME FINISH, OR BLACK, RED AND BLUE ANO COLORS. OUR VINTAGE CALIPERS ARE DESIGNED TO BE USED WITH PM BRACKETS FOR OUR MOST POPULAR FRONT AND REAR APPLICATIONS.

BRACKETRY NOT PICTURED.



BLACK OPSTM



SHOW CHROME™

SHOW CHROME BLACK OPS MACHINE OPS



# FRONT BRAKE CALIPERS

FOR MOST 1984-2016 MODELS.

## 4 PISTON DIFFERENTIAL BORE CALIPERS



POLISHED  
CHROME, BLACK ANO, CONTRAST  
CUT & BLACK OPS



DIFFERENTIAL BORE TECHNOLOGY HAS BEEN APPLIED TO THESE 6 AND 4 PISTON CALIPERS - MAKING THEM THE MOST POWERFUL AND STYLISH BRAKES AVAILABLE FOR NEW GENERATION BIKES. OUR FAMOUS PM ICON LOGO IS MACHINED ON THE CALIPER TO LET ON-LOOKERS RECOGNIZE YOU'RE STOPPING IN STYLE! THESE BEAUTIES COME IN FIVE DIFFERENT FINISHES TO SUIT YOUR NEEDS.

## 6 PISTON DIFFERENTIAL BORE CALIPERS



POLISHED  
CHROME, BLACK ANO, CONTRAST  
CUT & BLACK OPS





# FRONT BRAKE CALIPERS

## 4 PISTON CLASSIC & BRACKET

1984-1999 FX, XL & FLST MODELS.



THE ORIGINAL 4 PISTON BILLET CALIPER AND BRACKET THAT PUT PM IN THE BRAKE BUSINESS OFFERS SUPERIOR BRAKING POWER.

POLISH  
CHROME, BLACK ANO, CONTRAST  
CUT & BLACK OPS

## 4 PISTON DIRECT BOLT-ON

2008-2016 FLH/T, 2006-2016 V-ROD,  
2014-16 XL & 2015-16 SOFTAIL MODELS.



PM'S ORIGINAL 4 PISTON CALIPER UPDATED TO A DIRECT BOLT-ON APPLICATION IS SPECIFICALLY ENGINEERED FOR USE WITH STOCK BRAKE MASTER CYLINDER ON SELECT LATE MODEL APPLICATIONS.

POLISH  
CHROME, BLACK ANO, CONTRAST  
CUT & BLACK OPS

## 4 PISTON SPRINGER & BRACKET

1988-2006 SPRINGER SOFTAIL.



PM'S 4 PISTON CALIPER AND BRACKET HAS BEEN ADAPTED FOR SPRINGER APPLICATIONS.

POLISH  
CHROME, BLACK ANO, CONTRAST  
CUT & BLACK OPS

## 2 PISTON & BRACKET

CUSTOM APPLICATIONS.



PM'S 2 PISTON CALIPER IS DESIGNED FOR THE CUSTOM BIKE BUILDER.

POLISH  
CONTRAST CUT



# REAR BRAKE CALIPERS

PERFECT POLISH SHOW CHROME BLACK ANO Contrast Cut BLACK OPS

## 4 PISTON DIFF. BORE & BRACKET

2000-2003 SPORTSTER.



DIFFERENTIAL BORE TECHNOLOGY COMBINED WITH A SOLID BILLET ALUMINUM BRACKET PROVIDES INCOMPARABLE BRAKING PERFORMANCE FOR THE SPORTSTER.

POLISH  
CHROME, BLACK ANO, CONTRAST  
CUT & BLACK OPS

## 4 PISTON DIFF. BORE & BRACKET

2002-2016 VRSC & 2000-2016 FLH MODELS.



PM'S 4 PISTON DIFFERENTIAL BORE CALIPER COMBINED WITH A MACHINED ALUMINUM BRACKET MAKE FOR A POWERFUL BRAKE SYSTEM REQUIRED FOR TOURING AND V-ROD MODELS.

POLISH  
CHROME, BLACK ANO, CONTRAST  
CUT & BLACK OPS

## 4 PISTON CALIPER & BRACKET

2005-2016 SPORTSTER.



PM'S POWERFUL CALIPER AND BRACKET COMBO ADAPTED TO FIT LATE MODEL SPORTSTERS.

POLISH  
CHROME, BLACK ANO, CONTRAST  
CUT & BLACK OPS

## 4 PISTON CLASSIC & BRACKET

1991-2016 DYNA.



DESIGNED SPECIFICALLY FOR THE DYNA, THIS BRACKET TOPPED WITH THE CLASSIC PM 4 PISTON CALIPER, PROVIDE IMPROVED BRAKING PERFORMANCE OVER STOCK.

POLISH  
CHROME, BLACK ANO, CONTRAST  
CUT & BLACK OPS





# REAR BRAKE CALIPERS

## 4 PISTON INTEGRATED DIFF. BORE

2006-2016 SOFTAIL MODELS WITH 200MM TIRE & 1987-2006 STANDARD SOFTAIL MODELS.



THE ULTIMATE REAR BRAKE FOR THE H-D SOFTAIL. FOUR DIFFERENTIAL BORE SIZE PISTONS ARE WRAPPED IN A UNIQUE FORGED ALUMINUM INTEGRATED CALIPER/BRACKET CREATING POWERFUL AND CONSISTENT BRAKING.

POLISH - CALL FOR PRICE  
CHROME, BLACK ANO, CONTRAST CUT & BLACK OPS

## 4 PISTON CLASSIC & BRACKET

1987-2006 FXST & FLST.



PM'S TIME TESTED 4 PISTON CALIPER AND BILLET BRACKET ARE THE IDEAL REAR BRAKE SYSTEM FOR LATE MODEL SOFTAILS.

POLISH - CALL FOR PRICE  
CHROME, BLACK ANO, CONTRAST CUT & BLACK OPS

## 4 PISTON DRIVE-SIDE BRAKE SYSTEM

PM PHATAIL KIT, SOFTAIL & CUSTOM APPLICATIONS.



COMPLETELY CONCEALED BEHIND THE BELT SPROCKET, PM'S STATE-OF-THE-ART BRAKE SYSTEM UTILIZES OUR CLASSIC 4 PISTON CALIPER AND SPECIALLY CONSTRUCTED BILLET ALUMINUM BRACKET

POLISH - CALL FOR PRICE  
CHROME, BLACK ANO, CONTRAST CUT

## 4 PISTON SPROCKET-BRAKE SYSTEM

LEFT OR RIGHT SIDE CUSTOM APPLICATIONS.



PM HAS DEVELOPED A STATE-OF-THE-ART SPROCKET BRAKE FOR THE CUSTOM BUILDER UTILIZING PM'S PROVEN 4 PISTON CALIPER WITH A STAINLESS STEEL SPROCKET DISC.

POLISH SPROCKET DISC  
CHROME, BLACK ANO, CONTRAST BOLT KIT  
CUT & BLACK OPS



# CONTOUR FORWARD CONTROLS

STANDARD AND 2" EXTENDED FOR 1984-2016 SOFTAIL.  
STANDARD FITMENT FOR 2002-2007 V-ROD,  
CUSTOMS AND 1991-2016 DYNA MODELS.



PERFECT POLISH   SHOW CHROME   BLACK ANO   Contrast Cut

POLISHED

CHROME, BLACK ANO & CONTRAST CUT

PM CONTOUR FOOT CONTROLS ARE DESIGNED TO WORK WITH PM BRAKE SYSTEMS AS WELL AS OEM AND OTHER AFTERMARKET BRAKES. PM CONTROLS ARE MACHINED FROM BILLET ALUMINUM WITH PM'S PROVEN MASTER CYLINDER, PEGS WITH NON-SLIP RUBBER, AND ARE AVAILABLE FOR STOCK KICKSTANDS AND CUSTOM APPLICATIONS.

# REAR MASTER CYLINDERS



2000-2016 FLST  
2000-2007 FLH



2008-2016 FLH

POLISHED  
CHROME, BLACK ANO &  
CONTRAST CUT

PERFECT POLISH   SHOW CHROME   BLACK ANO   Contrast Cut



PERFORMANCE MACHINE'S PROVEN CONTOUR MASTER CYLINDER IS DESIGNED AS A DIRECT REPLACEMENT FOR 2000 TO 2016 FLH AND FLST MODELS. DESIGNED TO WORK WITH STOCK OR PM BRAKE CALIPERS.



1984-2016 FL MODELS.

# FLOORBOARDS & LEVERS



**SUPERLIGHT**

PASSENGER

RIDER

RIDER CHROME, CONTRAST CUT  
PASSENGER CHROME, CONTRAST CUT

OUR CONTOUR FLOORBOARDS HAVE SET THE STANDARD FOR AFTERMARKET HARLEY BOARDS FOR A LONG TIME. NOW NEW FOR 2016, THE F.T.Z. AND SUPERLIGHT RIDER FLOORBOARDS LAY DOWN A BIG PLATFORM FOR BIG BOOTS AND PLENTY OF FOOT ROOM ON THOSE LONG RIDES TO STRETCH OUT. THE F.T.Z. DESIGN'S BEST FEATURE IS THE VIBRATION ISOLATING FLOATING TREAD ZONE WHICH IS NEATLY HIDDEN IN THIS UNIQUE DESIGN. THE KNURLED RUBBER INSERT PROVIDES A NON-SLIP SURFACE AND FURTHER REDUCES VIBRATION. YOU GET GREAT PM LOOKS, EXTENDED FOOT ROOM AND THE VIBRATION DAMPENING OF A FLOATING FLOORBOARD. RIDING IN STYLE AND COMFORT COMES STANDARD. THESE BIG RIDER BOARDS WILL BOLT TO STOCK MOUNTS ON 1984-2016 FLH/T TOURING MODELS, 1984-2016 FLST/FLS AND 2012-2016 FLD MODELS. MATCHING PM PASSENGER FLOORBOARDS FIT 1993-2016 FLH/T MODELS WITH STOCK PASSENGER FLOORBOARD MOUNTS.



**CONTOUR**

PASSENGER

RIDER

RIDER CHROME, BLACK ANO  
PASSENGER CHROME, BLACK ANO



**F.T.Z.**

PASSENGER

RIDER

RIDER CHROME, CONTRAST CUT  
PASSENGER CHROME, CONTRAST CUT

## BRAKE LEVER

CHROME, BLACK ANO,  
CONTRAST CUT  
(W/ SPACER)



SHOW  
CHROME  
BLACK  
ANO  
Contrast  
Cut

## HEEL/TOE SHIFT LEVER

CHROME, BLACK ANO, CONTRAST  
CUT (W/ SPACER)

TOE SHIFT LEVER ONLY  
W/ SPACER)



# CONTOUR HAND CONTROLS

## HYDRAULIC CLUTCH MASTER CYLINDER

POLISHED CHROME, BLACK ANO, CONTRAST CUT & BLACK OPS

## HYDRAULIC BRAKE MASTER CYLINDER

POLISHED CHROME, BLACK ANO, CONTRAST CUT & BLACK OPS

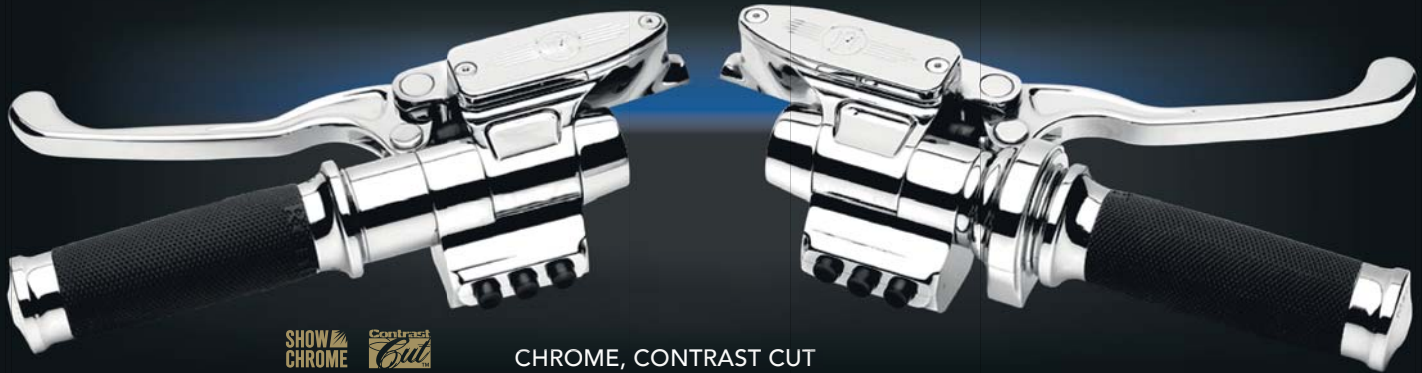
PERFECT POLISH SHOW CHROME BLACK ANO Contrast Cut BLACK OPS

## CABLE CLUTCH LEVER



POLISHED CHROME & BLACK ANO

## COMPLETE HAND CONTROL SETS



SHOW CHROME Contrast Cut

CHROME, CONTRAST CUT

ALL PM CLUTCH LEVER ASSEMBLIES AND CLUTCH MASTER CYLINDERS ARE CNC-MACHINED FROM BILLET ALUMINUM. THE 11/16" BORE FEATURES A HARD ANODIZED FINISH TO ELIMINATE WEAR. AVAILABLE WITH STARTER INTERRUPT SWITCH (SOLD SEPARATELY) FOR LATE MODEL H-D'S. PM HYDRAULIC BRAKE MASTER CYLINDER FEATURES A CNC MACHINED ONE-PIECE BODY WITH REFINED INTERNALS FOR OPTIMAL BRAKE PERFORMANCE. AVAILABLE WITH OPTIONAL BRAKE LIGHT SWITCH (SOLD SEPARATELY).

# CLUTCH SLAVES

FOR 5 AND 6 SPEED CABLE AND HYDRAULIC TRANSMISSIONS.



SMOOTH



FLUTED



PERFECT POLISH SHOW CHROME BLACK ANO Contrast Cut

POLISHED

CHROME, BLACK ANO & CONTRAST CUT -



THE PM CLUTCH SLAVE IS PERFECTLY MATCHED TO OUR CONTOUR MASTER CYLINDER FOR OPTIMAL CLUTCH ACTION.



# SWITCH HOUSINGS



## CAN BUS

2011-2016 SOFTAIL MODELS, 2012-2016 DYNA MODELS AND 2014-2016 SPORTSTER MODELS.



CHROME & CONTRAST CUT-

PERFORMANCE MACHINE CAN BUS SWITCHES WERE DESIGNED TO REPLACE THE STOCK CONTROL HOUSINGS ON 2011-16 SOFTAIL, 2012-16 DYNA AND 2014-16 SPORTSTER MODELS. THE PM SWITCH HOUSINGS UTILIZE THE FACTORY H-D ELECTRONIC CONTROL MODULES WITH PM INTEGRATED ROCKER BUTTONS MARKED CLEARLY WITH FUNCTION SYMBOLS. PM CAN BUS CONTROLS MESH SEEMLESSLY WITH PM CONTOUR HAND CONTROLS AND ARE AVAILABLE IN CHROME AND CONTRAST CUT FINISHES.

## FLH FOUR BUTTON

TOURING MODELS



POLISH -

CHROME, BLACK ANO

## FLH FIVE BUTTON



THE PM TOURING EDITION SWITCH HOUSINGS ALLOW THE USE OF PM CONTOUR CONTROLS WITHOUT SACRIFICING YOUR STOCK SWITCHES. AVAILABLE FOR USE WITH CAN BUS APPLICATIONS UTILIZING PM CAN BUS CONTROLLER FOR HYDRAULIC OR CABLE CLUTCH IN FOUR OR FIVE BUTTON CONFIGURATIONS.



\*CAN BUS OPTIONS AVAILABLE



## 3 BUTTON



3 BUTTON - POLISH -

CHROME, BLACK ANO -

## 1 BUTTON



1 BUTTON - POLISH -

CHROME, BLACK ANO

CUSTOM APPLICATIONS, SOFTAIL, DYNA AND SPORTSTER MODELS.

PM'S BILLET ALUMINUM SWITCH HOUSINGS ARE A PERFECT COMPLIMENT TO THE PM CONTOUR MASTER CYLINDERS. THE SINGLE OR THREE BUTTON APPLICATIONS FEATURE HIGH QUALITY SWITCHES WITH 3/6" LEADS. SPACERS ARE ALSO OFFERED TO FILL THE GAP BETWEEN THE SWITCH HOUSING AND THE GRIP. PM FAT BAR ADAPTERS ARE DESIGNED TO ADAPT CONTOUR CONTROLS TO 1.25" BARS.



POLISHED -  
CHROME & BLACK ANO -



# THROTTLE HOUSINGS

PM CONTOUR THROTTLE HOUSINGS ARE THE FINISHING TOUCH TO THE HANDLEBAR SET UP. THROTTLE HOUSINGS ARE AVAILABLE IN SINGLE CABLE, DUAL CABLE, DUAL SNAP IN, AND ELECTRONIC THROTTLE.



# CONTOUR BELT DRIVE

PM PHATAIL KITS    2008-2011 ROCKER  
1991-2016 SOFTAIL    1990-2006 FLH  
2006-2016 DYNA    2008-2016 FLH



SOFTAIL, DYNA & FLH -

PM PHATAIL & H-D ROCKER -

BY POPULAR DEMAND, WE HAVE UPDATED THE CHROME VERSION OF OUR PRIMARY TO FEATURE THE SAME MACHINED, OPEN WINDOWS AS THE CONTRAST CUT VERSION. SAME SUPERIOR PERFORMANCE WITH IMPROVED STYLING FOR YOUR MACHINE. ALREADY HAVE A PM CHROME PRIMARY? WE'VE CREATED A KIT COMPLETE WITH THE OPEN FACE YOU'LL NEED TO UPDATED YOUR EXISTING PRIMARY TO THE OPEN FACE STYLE FOR SOFTAIL AND DYNA APPLICATIONS.





# PM PHATAIL WIDE TIRE KIT

## PM PHATAIL KIT INCLUDES:

- WIDE SWINGARM AND REAR AXLE ASSEMBLY
- ONE PIECE FORMED STEEL FENDER AND BILLET ALUMINUM FENDER STRUTS (OPTIONAL RECESSED BILLET LICENSE PLATE FRAME)
- BILLET ALUMINUM PRIMARY SPACERS, GASKETS AND HARDWARE
- EXTENDED MAINSHAFT, FRONT MOTOR SPROCKET & FINAL DRIVE GEAR
- STARTER SHAFT EXTENSION AND ALL HARDWARE
- ALL NECESSARY HARDWARE, SPACERS AND GASKETS
- DETAILED INSTRUCTION SHEET WITH PHOTOS OF EACH STEP



2007, 2008-2016 STANDARD OR DRIVE-SIDE - | WITH RECESSED LICENSE PLATE -  
 2007, 2008-2016 STANDARD WITH PM PRIMARY STANDARD/DRIVE-SIDE - | WITH RECESSED LICENSE PLATE -  
 2000-2006 5-SPEED SOFTAIL STANDARD OR DRIVE-SIDE - | WITH RECESSED LICENSE PLATE -  
 1991-1999 5-SPEED SOFTAIL STANDARD OR DRIVE-SIDE - | WITH RECESSED LICENSE PLATE -

THE PM PHATAIL KIT IS A BOLT-ON KIT FOR 1991 AND NEWER SOFTTAILS THAT ALLOWS OUR 18" X 8.5" WHEEL TO REST COMFORTABLY IN THE CONFINES OF A BONE STOCK H-D SOFTTAIL FRAME! INCLUDES SWINGARM, FENDER, BILLET STRUTS, ALL NECESSARY TRANS PARTS AND DETAILED INSTRUCTIONS. AVAILABLE IN STANDARD BRAKE CONFIGURATION OR WITH PRE-WELDED TABS FOR THE PM DRIVE-SIDE BRAKE SYSTEM. PM PHATAIL KITS INCLUDE ALL OF THE COMPONENTS LISTED BELOW. WE STRONGLY RECOMMEND THE CONVERSION BE COMPLETED BY A QUALIFIED BIKE SHOP. CUSTOM SEATS CAN BE PURCHASED FROM CORBIN AND BITCHIN SEAT COMPANY. WILL NOT WORK WITH HARLEY FACTORY SIX SPEED OR FACTORY HYDRAULIC CLUTCH SLAVE ON 1991-2006 MODELS.



# TRIKE FORGED WHEELS

FOR H-D TRIKES AND  
SELECT TRIKE MFG MODELS.



WRATH



LUXE

PARAMOUNT

RIVIERA

TORQUE

HEATHEN



H-D MODELS (15x5.5, 18x5.5)  
CHROME & CONTRAST CUT  
CONTRAST CUT PLATINUM

SELECT TRIKE MFGS (15x7)  
CHROME & CONTRAST CUT  
CONTRAST CUT PLATINUM



PM TRIKE WHEELS ARE THE FIRST OF THEIR KIND TO BE MANUFACTURED FOR H-D TRIKE APPLICATIONS AND OTHER SELECT TRIKE KITS. PM'S DEDICATION TO INNOVATION HAS RESULTED IN A WHEEL THAT WILL GO UNRIVALED IN DESIGN AND FUNCTION. PM STARTS WITH A SPECIALLY DESIGNED REAR WHEEL BLANK THAT WAS DEVELOPED TO BE A PERFECT MATCH TO OUR FRONT FORGED MOTORCYCLE WHEELS. USING THIS EXCLUSIVE FORGING RATHER THAN A STOCK AUTOMOTIVE FORGING CREATES A MORE AESTHETICALLY APPEALING PACKAGE FOR YOUR THREE WHEELED RIDE. THE WHEEL CENTER IS FINISHED WITH A HUB CAP FEATURING A PM LOGO WITH MACHINED OPENINGS TO EXPOSE THE LUG NUTS.

# TRIKE BRAKE SYSTEMS

2009-2013 STOCK H-D TRIKE MODELS.



STAGE I KIT

STAGE II KIT



PM ENGINEERS HAVE COMBINED OUR 4-PISTON CALIPER WITH THE INTEGRATED RACE TECHNOLOGY OF OUR REAR CONTOUR MASTER CYLINDER TO CREATE THE MOST INNOVATIVE BRAKE SYSTEM FOR 2009 TO 2013 STOCK H-D TRIKE APPLICATIONS. THE RESULT: OUR 4-PISTON CALIPERS PROVIDE MORE CLAMPING FORCE TO SLOW THE TRIKE DOWN WHILE THE REAR MASTER CYLINDER PROVIDES THE EXTRA FLUID TO THE CALIPERS. THE STAGE I KIT ELIMINATES BRAKE FADE AND DECREASES THE STOPPING DISTANCE DRAMATICALLY WITH LESS PEDAL EFFORT, TURNING THIS FUN MACHINE INTO A REAL PERFORMER. THE STAGE II KIT INCLUDES EVERYTHING IN THE STAGE I KIT, PLUS TWO BRACKETS TO ADAPT THE PM CALIPERS FOR TWO HEAVY DUTY 11.5" ROTORS. THE ADDITION OF THE PM STAINLESS ROTORS HAS ALL THE BENEFITS OF STAGE I AND FURTHER HELPS TO DECREASE STOPPING DISTANCE.





# REPLACEMENT PARTS

## REBUILD KIT FOR PM CALIPERS

CALIPER	PART #	CALIPER	PART #
125X4R	0052-3002	162X2	0056-3002
125X4RSPH	0052-3002	137X4B	0053-3903
125X4SL	0052-3002	112X6B	0051-3901
125X4S	0052-3002	137X6	0053-3902
125X2	0052-3001	112X6RSB	0051-3902
Radial	0052-3002	Integrated	0053-3904

## BRAKE PADS

PAD MFGR	COMPOUND	PART #	PAD MFGR	COMPOUND	PART #
Caliper: 125X4R, 137X4B (Order 1 Pair)			Caliper: 125X2 (Order 1 Pair), 125X4S, 125X4SL (Order 2 Pairs)		
DP	Sintered	0052-1602DS	DP	Sintered	0052-1601DS
DP	Organic	0052-1602DR	DP	Organic	0052-1601DR
Caliper: Integrated Rear for Softail (Order 1 Pair)			Caliper: 112X6B - (Order 1 Pair)		
DP	Sintered	0053-1608DS	DP	Sintered	0051-1602DS
Caliper: Radial Mount (Order 1 Set)			DP	Organic	0051-1602DR
DP	Sintered	0052-1606DS			

## ANTI-RATTLE SPRINGS

DESCRIPTION	CALIPERS	PART #	DESCRIPTION	CALIPERS	PART #
Anti-Rattle Spring	125X4R	0052-1801	Anti-Rattle Spring	112X6B	0051-1800
Anti-Rattle Spring	137X4B	0052-1801	Anti-Rattle Springs	162X2 (Order 2)	0056-1800
Anti-Rattle Spring	Integrated Rear	0053-1800			

## CALIPER SHIM KITS

DESCRIPTION	CALIPERS	PART #	DESCRIPTION	CALIPERS	PART #
5/16" Shims	125X2, 125X4S	0019-9000	3/8" Shims	125X4R, 125X4SL, 125X4RSPH, 137X4, 137X6, 112X6, 162X2	0019-9001
ASSEMBLY LUBRICANT			2000 up H-D	137X4, 112X6	
Hydraulic Lubricant for Caliper Assembly Capsule		0043-0010	10mm Shims		0019-9004

## ANCHOR RODS & BALL ROD ENDS

DESCRIPTION	PART #	DESCRIPTION	PART #
2" Rod Assembly - 5/16" Ball Rod Ends	0028-9802	12" Rod Assembly - 3/8" Ball Rod Ends	0028-9912
6" Rod Assembly - 5/16" Ball Rod Ends	0028-9806	14" Rod Assembly - 3/8" Ball Rod Ends	0028-9914
4" Rod Assembly - 3/8" Ball Rod Ends	0028-9904	3/8" x 3/8" - 24 Ball Rod Ends	0074-0001-CH
6" Rod Assembly - 3/8" Ball Rod Ends	0028-9906	1/4" x 1/4" - 28 Ball Rod Ends	0074-0003-CH
8" Rod Assembly - 3/8" Ball Rod Ends	0028-9908	5/16" x 5/16" - 24 Ball Rod Ends	0074-0004-CH
10" Rod Assembly - 3/8" Ball Rod Ends	0028-9910		

## MASTER CYLINDER REBUILD KITS

DESCRIPTION	PART #	DESCRIPTION	PART #
5/8" Bore Standard 12/96 and up	0060-3602	3/4" Bore Standard 12/96 and up	0060-3702
5/8" Bore Standard Pre- 6/96	0060-3603	3/4" Bore Standard Pre- 3/96	0060-3703
5/8" Bore Standard 6/96 - 11/96	0060-3604	3/4" Bore Standard 3/96 - 11/96	0060-3704
5/8" Bore Contour	0060-3605	Top Gasket for Contour Master	0060-1019
Top Gasket for Classic Master	0060-1010	9/16" Bore Contour	0060-3505
11/16" Classic Master Cylinder	0060-3900	11/16" Bore Contour	0060-3605

## RUBBER REPLACEMENTS

DESCRIPTION	PART #	DESCRIPTION	PART #	DESCRIPTION	PART #
Contour/Merc Grip (Order 2)	0063-1013M	Contour Peg (Big)	0035-9006	Rubber Wrapped Peg	0031-1087
Apex/Elite Grip (Order 2)	0063-1049M	Contour Pedal (Small)	0035-9007	Rubber Wrapped Pedal	0033-1084M
XL Grip (Order 2)	0063-1020	XLS Peg (Order 1 per Peg)	0031-1215M	Round Peg (Big)	0035-9010
XLS Grip (Order 1 per Grip)	0063-1160M	Apex/Elite Foot Peg	0031-1119M	Round Pedal (Small)	0035-9009
Overdrive Grip (Order 1 per Grip)	0063-1142M	Apex/Elite Shift Peg	0033-1084M	Overdrive Peg (Order 1 per Peg)	0031-1203M







BE  
ONLY  
ONE



PERFORMANCE MACHINE



OVER FOUR DECADES ◀ PERFORMANCE MACHINE ▶ & FORGING FORWARD

INDIVIDUALISM COMES STANDARD. CHARACTER IS BUILT. ICONS ARE REMEMBERED.  
BE ONLY ONE.



Accept no compromises, choose only quality motorcycle products.