



**Performance  
Machine · Inc**  
DISC BRAKES AND WHEELS FOR MOTORCYCLES

Installation Instructions  
**Contour Floor Boards**  
For 1991 through 2007 Big Twins

### ATTENTION

Statements in these instructions that are preceded by the following words are of special significance:

#### **Warning**

This means there is the possibility of injury to yourself or others.

#### **Caution**

This means there is the possibility of damage to the motorcycle.

#### **Note**

*Information of particular importance has been placed in italics.*

### Warranty

Performance Machine Inc. warrants to the original purchaser that the parts of this Contour Floor Board System to be free of manufacturing defects in materials and workmanship for a period of one (1) year from the date of purchase. In the event warranty service is required, you must call Performance Machine immediately with a description of the problem.

If it is deemed necessary for Performance Machine to make an evaluation to determine whether the part is defective, a return authorization number will be given by Performance Machine. The parts must be packaged properly so as to not cause further damage and returned prepaid to Performance Machine with a copy of the original invoice of purchase and a detailed letter outlining the nature of the problem. If after the evaluation by Performance Machine the part was found to be defective it will be repaired or replaced at no cost to you. If we replace it, we may replace it with a reconditioned one of the same design.

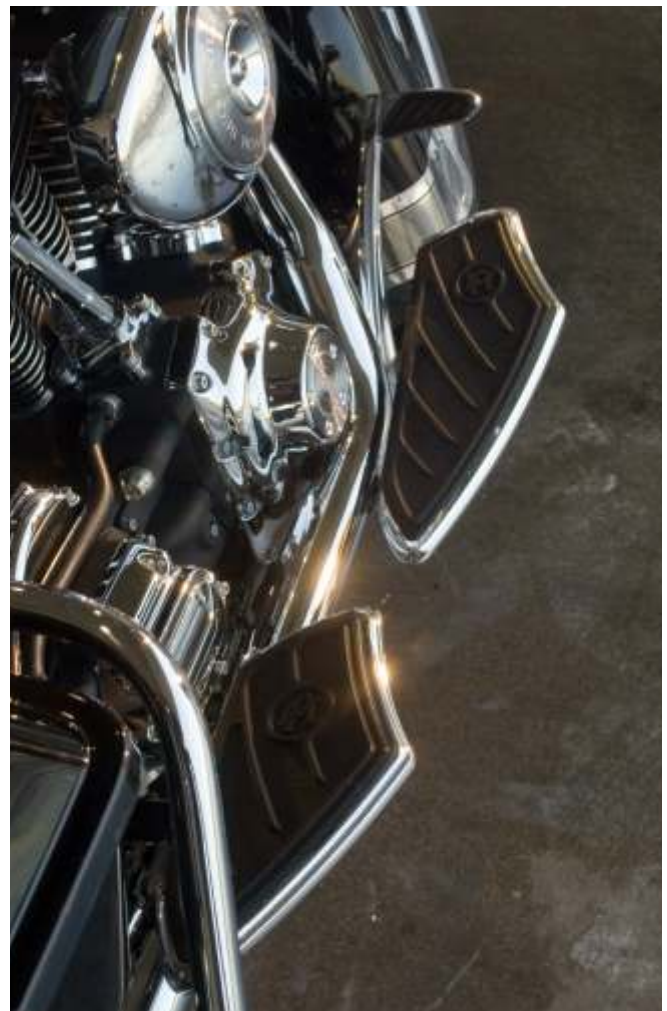
Performance Machine shall not be held liable for any consequential or incidental damages resulting from the failure of a Performance Machine part.

Performance Machine shall have no obligation if a part becomes defective as a result of improper installation or abuse.

### Important Notice

Before installing this Floor Board Assembly, read through these instructions completely; this will familiarize you with the way in which the parts fit together and the tools needed to complete the job.

The PM Floor Board Assembly involves alterations to your motorcycle and may void your factory warranty. PM **STRONGLY** recommends this installation be done by an experienced motorcycle mechanic.



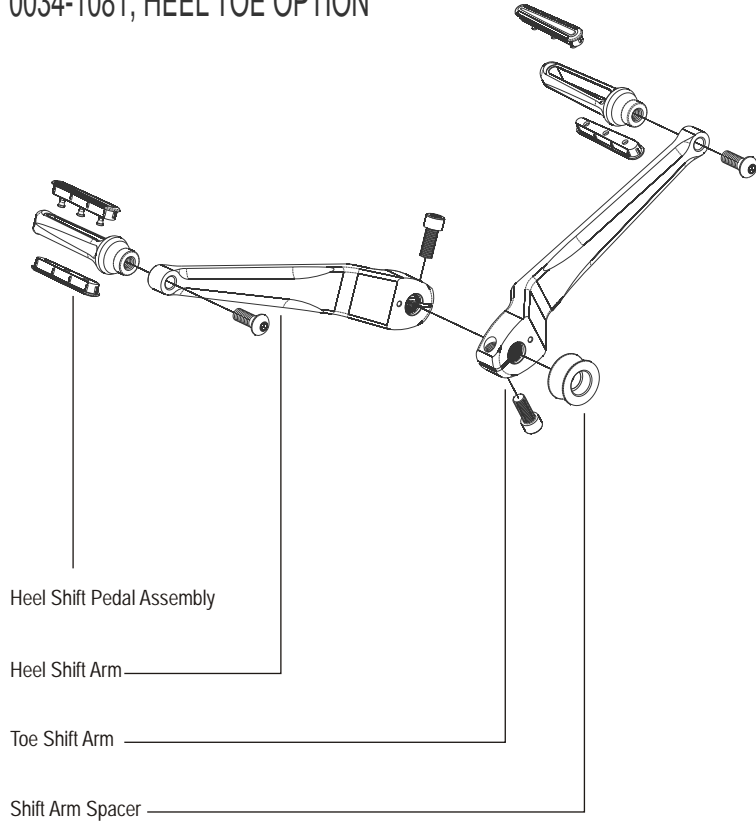
### Disclaimer

These Performance Machine parts are designed for high performance motorcycle applications and are intended for the very experienced rider only. The installation of these Performance Machine parts may adversely effect or void your factory warranty.

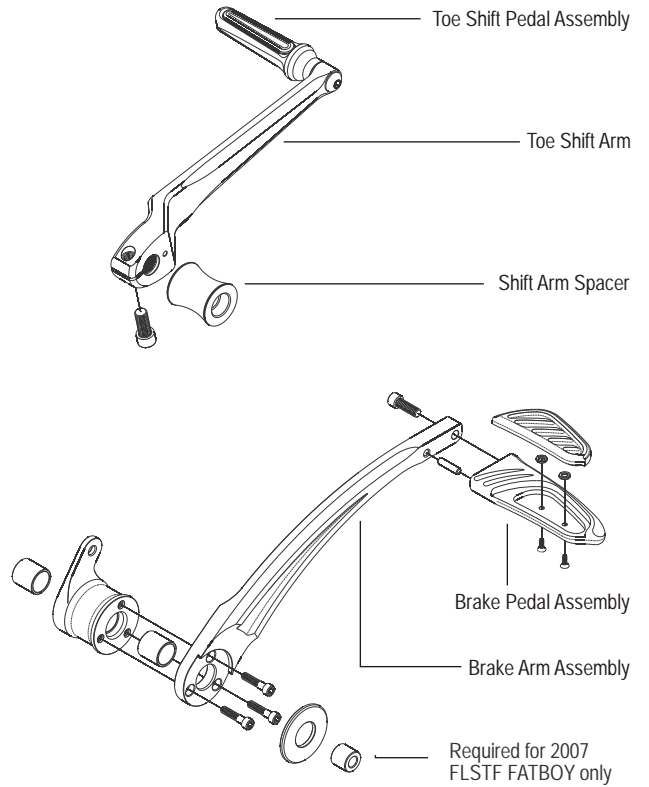
## PM Contour Floor Boards:

Before starting to install the Contour Floor Boards on your motorcycle, check the packing list to make sure the kit received is the correct one for your model motorcycle and that all components are present.

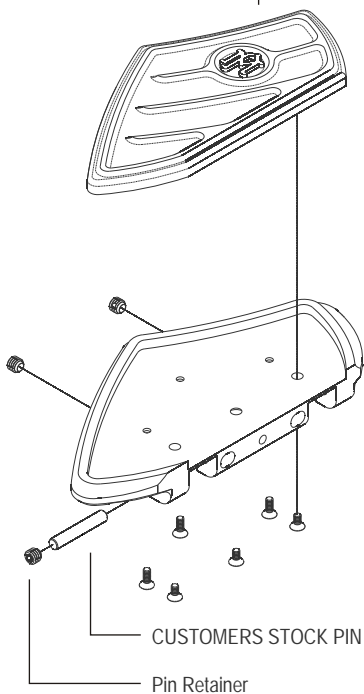
### 0034-1081, HEEL TOE OPTION



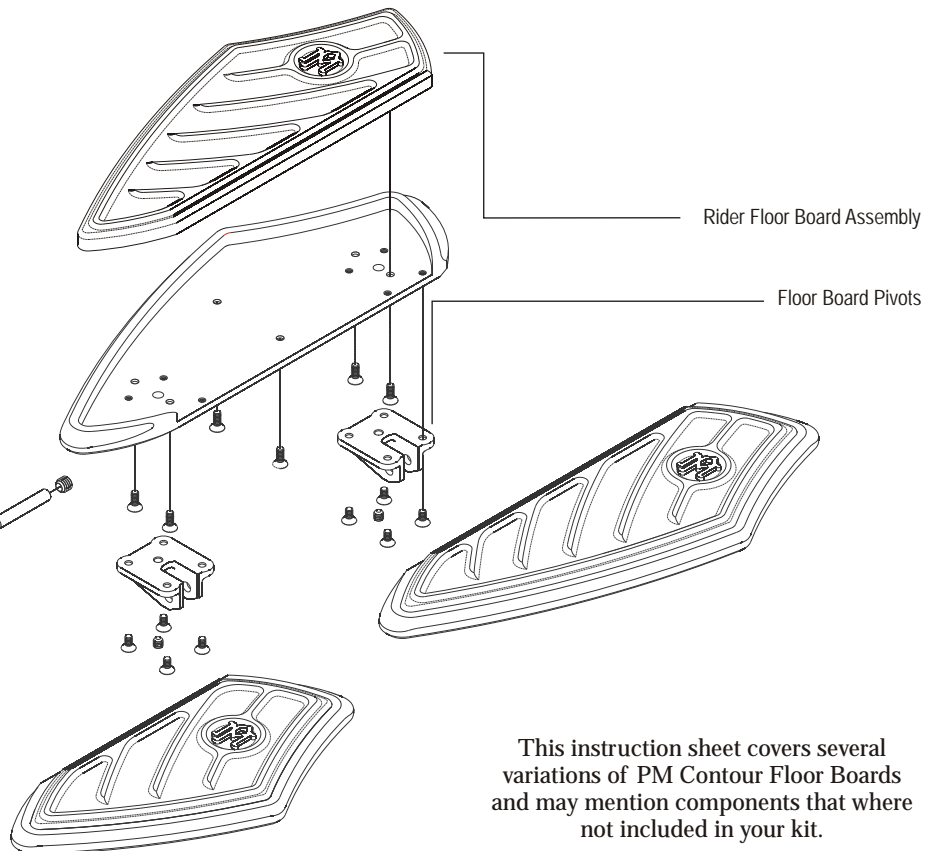
### 0034-1080, TOE SHIFTER (only)



### Passenger Floor Board Assembly



### Rider Floor Board Assembly



This instruction sheet covers several variations of PM Contour Floor Boards and may mention components that were not included in your kit.



Photo 1

Installation of the PM Contour Floor Boards begins with the disassembly and removal of the stock units. For additional information on removal of these parts, consult your factory manual.

Right Side:

1) Remove Footboard assembly (do not remove brackets). Shoulder bolts will be reused and should be saved.



Photo 2

2) If utilizing the PM Brake Arm, the stock brake arm assembly will be removed next (if not, skip to step 4). Remove cotter pin from clevis connecting brake arm to push rod and remove clevis pin and washer. Cotter pin should be replaced, clevis and washer are reused. Remove locknut and washer retaining brake arm and slide arm off of bike. Locknut and washer will be reused.

————— Note —————

*Inner o-ring grease seal will be reused and should be left on the pivot shaft.*



Photo 3

3) Coat brake arm pivot with grease and slide PM brake arm onto pivot. Install washer and using a drop of blue thread lock install locknut and torque to 35 ft. Lbs. Reinstall clevis and washer utilizing a new cotter pin.

4) Place a drop of Threadlock and install set screws in PM Floorboard hinge plate. Set screws can be used to adjust angle of floorboards for proper clearance and comfort.



Photo 4

5) Coat shoulder bolts with light layer of grease, install PM Floorboard onto factory brackets (threads should face inboard). Test pivot action of floorboard and adjust set screws to achieve appropriate floorboard angle. Using a drop of threadlock, install locknuts onto and shoulder bolts and tighten to 70 in-lbs.



Photo 5

————— C a u t i o n —————

Although we have tested this assembly with stock and many aftermarket exhaust systems, we can not guarantee fitment with every system on the market.

### Left Side:

- 6) Repeat floorboard removal process from step 1.
- 7) Install left side Floor Board (see step 5)
- 8) If utilizing PM shift arms remove stock shift arms (if not, installation is complete). See Photo 6
- 9) Install shift pedals onto arms, do not tighten.
- 10) Slide PM Shift Arm Spacer over shaft. Single arm will include a longer spacer, Dual Arm will include a shorter spacer. See Photo 7
- 11) Slide Toe Shifter onto splines. Place rider on bike and test shifter angle, adjust as necessary. Do not tighten cinch bolt. See Photo 8
- 12) If using the PM Heel Shifter, slide onto shaft and with rider on board adjust as necessary. See Photo 9
- 13) Once proper Shift Arm angle is satisfied, use a drop of red thread lock tighten cinch bolts to 18ft-lbs.
- 14) Line up shift pedals to allow rubber to contact heel and toe, use a drop of red thread lock and tighten to 18ft-lbs.



Photo 6



Photo 7



Photo 8



Photo 9



Photo 10



Photo 11



Photo 12



Photo 13



Photo 14

## Passenger Floor Boards

1) Remove Passenger Floor Boards and bracket assembly from bike (single bolt on each side).

### ———— Note ————

*The FLHX (Street Glide) as well as some custom models utilize a passenger **footpeg** instead of a floorboard and will require purchase of Harley Davidson Floor Board Bracket to complete installation.*

2) Pry up rubber to expose floor board pivot pins. Push pins to inside with 1/4" punch to allow stock floor board to separate from bracket. Save pins as they will be reused.

Passenger Floor Board operates with a ball detent mechanism made up of a ball bearing, a spring and a round detent in the floor board. The ball and spring will be reused.

### ———— Caution ————

*Ball and spring are captured between the floor board and bracket and can easily escape once the two are separated.*

3) Reinsert ball and spring (spring first).

4) Place bracket into PM Passenger Floor Board and insert pivot pins from outside.

5) Using a drop of blue Thread Lock, thread pin retainers into floor board until flush with outside of pivot bracket. Repeat for both sides.

6) Using original hardware, reinstall floor board onto bike and torque to factory specifications.



Rider FloorBoards ( fits 83-07 FLT, 2006 FLST )  
Includes right & left floorboards, bolts to stock mounts  
Polished           0036-1000  
Chrome             0036-1000-CH

Brake Lever (fits 97-07 FLT, 87-06 FLST)  
Includes machined aluminum brake Lever & pad  
Polished           0032-1080  
Chrome             0032-1080-CH

Shift Lever & Spacer (fits 83-07 FLT, 00-06 FLST)  
Includes machined aluminum shift lever & spacer if using toe  
shifter only.  
Polished           0034-1080  
Chrome             0034-1080-CH

Shift Levers & Spacer (fits 83-07 FLT, 00-06 FLST)  
Includes 2 machined aluminum shift levers & spacer if using both  
toe/heel shifters.  
Polished           0034-1081  
Chrome             0034-1081-CH

Passenger FloorBoards (fits 93-07 FLT, 93-06 FLST)  
Includes right & left floorboards, bolts to stock mounts  
Polished           0036-1001  
Chrome             0036-1001-CH  
FLHX Requires factory passenger floorboard bracket.



**Performance  
Machine · Inc**  
DISC BRAKES AND WHEELS FOR MOTORCYCLES