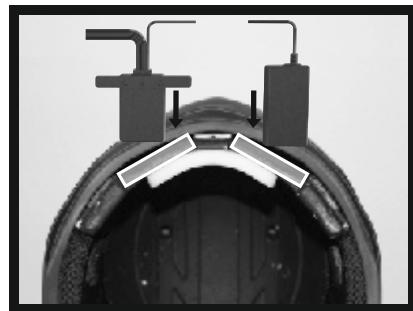
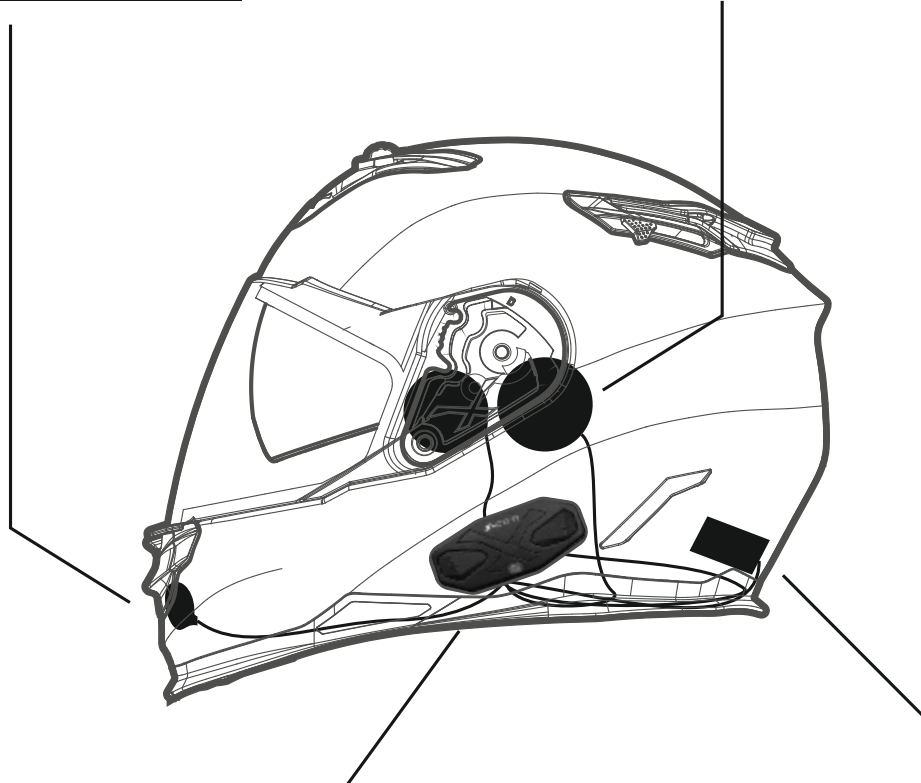
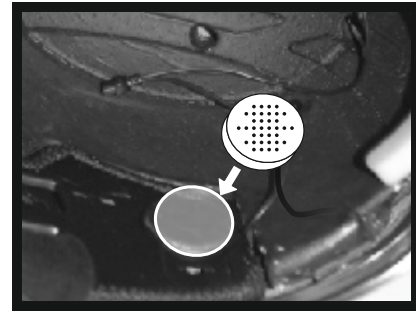
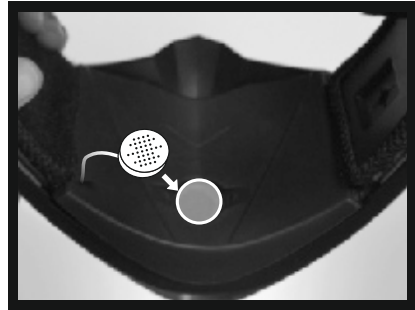


Our high quality helmet is made with the most advanced European technology. The helmets are technologically advanced for the motorcycle rider's protections, wick are made for motorcycle riding only. This helmet specifications is subject to change without notice.



Please read this manual very carefully before wearing your helmet and keep it in a safe place. For a correct use and your safety, please pay attention to following instructions. The main function of helmet is to protect your head in case of impact. This helmet is made to absorb some of the energy of a blow by partial destruction of its component parts and, even though damage may not be apparent, any helmet which has suffered an impact in an accident or received a similarly severe blow or other abuse should be replaced. To maintain the full efficiency of this helmet, there must be no alteration to the structure of the helmet or its component parts.





Do not expose the helmet to any type of liquid solvent;



Always use the helmet in the proper position, using the buckle to adjust to the head;



The helmet should be handled with care. Leaving it drops can damage the painting as well as reduce their characteristics of protection;
THIS IS NOT COVERED UNDER WARRANTY!

WRAP THE FLEXIBLE MEASURING TAPE AROUND YOUR HEAD.

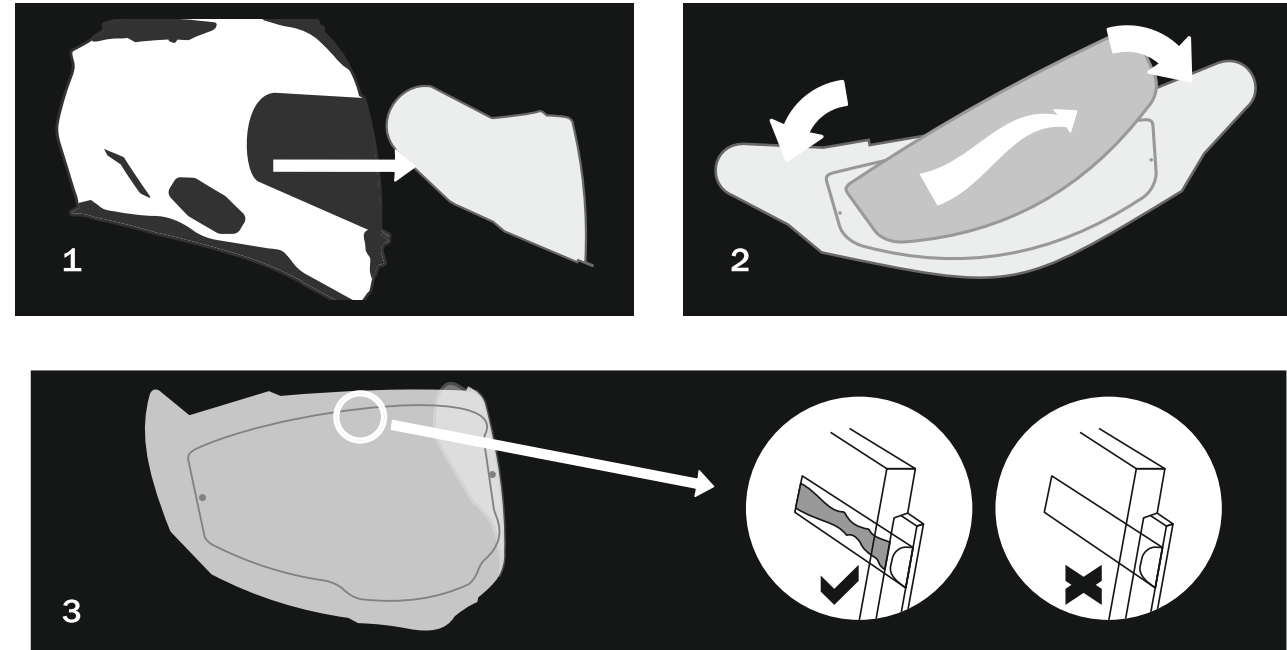
The size selection of the helmet is crucial to ensure the safety of the user. Never should use a helmet that is too small or too large in relation to the size of the head. To purchase a helmet is important that you try it: make sure the helmet fits perfectly to the head, there should be no gap between the helmet and the head; make some movements of rotation (left and right) with the helmet on the head (closed) this should not shake; it's important that the helmet is comfortable and involving the entire head.



| HELMET SIZE | XXS | XS | S | M | L | XL | XXL | XXXL |
|-------------|--------------------------|--------------------------|--------------------------|--------------------------|--------------------------|--------------------------|--------------------------|--------------------------|
| HEAD SIZE | 51/52 cm | 53/54 cm | 55/56 cm | 57/58 cm | 59/60 cm | 61/62 cm | 63/64 cm | 65/66 cm |
| | $\frac{20,06}{20,47}$ in | $\frac{20,87}{21,26}$ in | $\frac{21,27}{22,05}$ in | $\frac{22,06}{22,83}$ in | $\frac{22,84}{23,62}$ in | $\frac{23,63}{24,41}$ in | $\frac{24,42}{25,20}$ in | $\frac{25,59}{25,98}$ in |

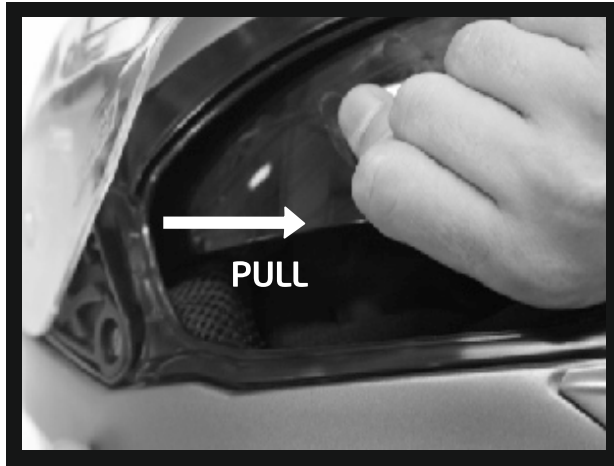
PINLOCK

MAX
VISION®

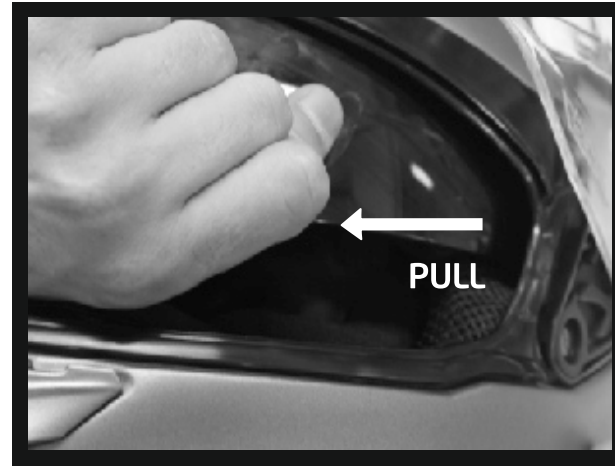


- 1 - Remove the helmet shield
- 2 - Bend the helmet shield and place the Pinlock® lens between the two pins provided in the helmet shield, fitting exactly into the dedicated recess.
- 3 - The silicon seal on the Pinlock® lens must make full contact with the helmet shield in order to avoid any condensation forming between the helmet shield and the Pinlock® lens.

HOW TO REMOVE DE INNER SUN VISOR?



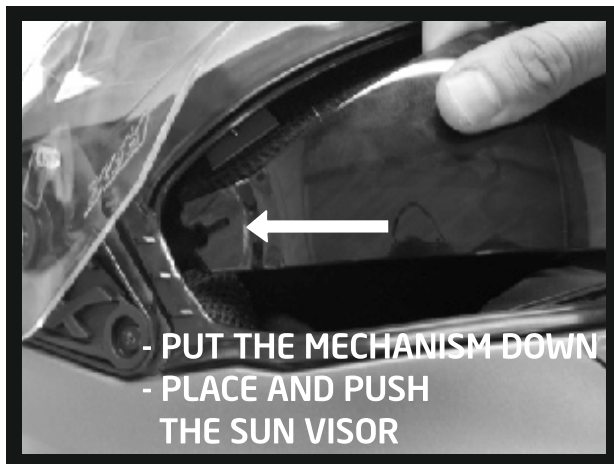
1



2

Keep the helmet in a safe place (not hang on the mirror of motorcycle or other support that can damage the lining). Do not carry your helmet on the bike or in the arm while driving;

HOW TO PLACE DE INNER SUN VISOR?



1



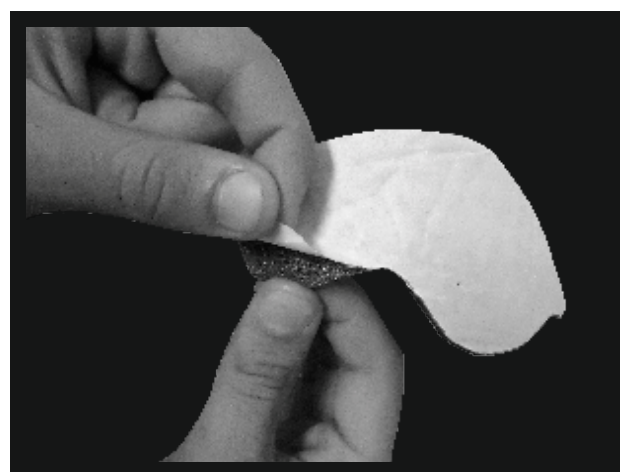
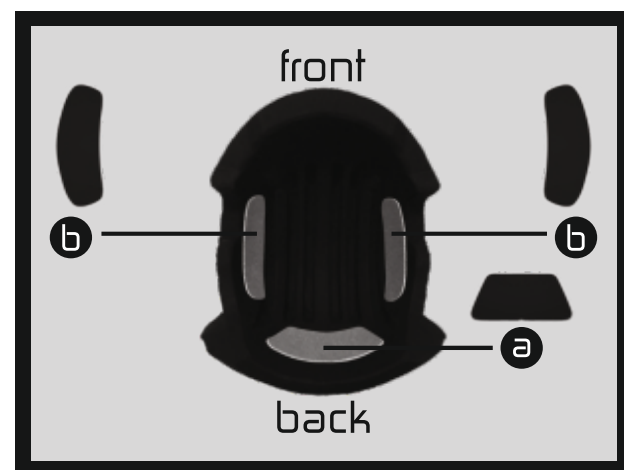
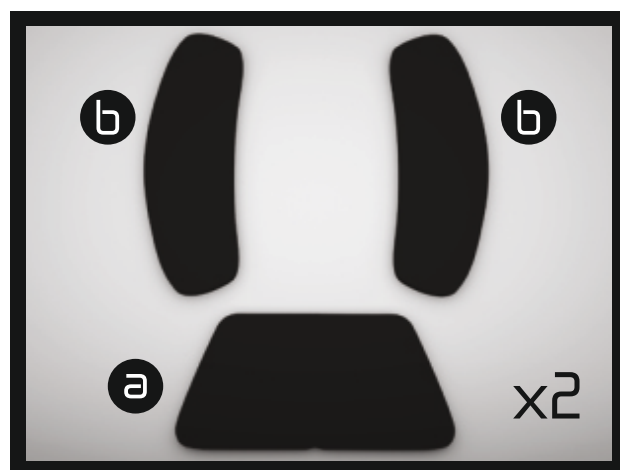
2

Light colors with matte finish require extra care as they are naturally more exposed to dust, fumes, compounds or other types of impurities.
THIS IS NOT COVERED UNDER WARRANTY!

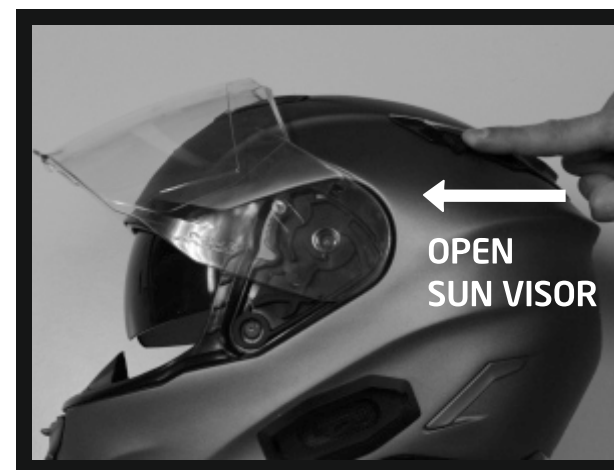
Neon colors will fade when subjected to prolonged UV rays exposure.
THIS IS NOT COVERED UNDER WARRANTY!

ergopadding system

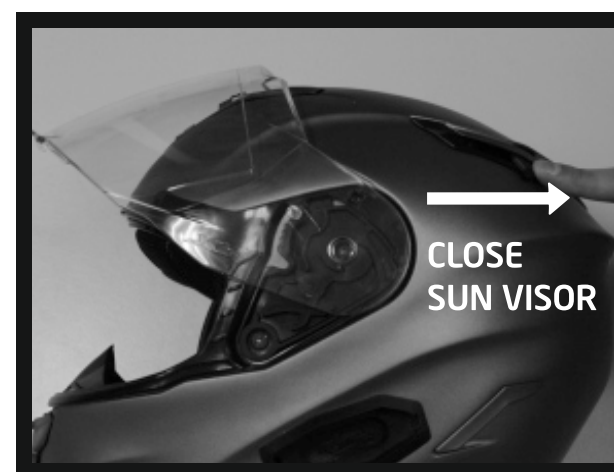
All helmets are supplied with a "foam replacement kit", allowing a perfect fit of the helmet to the shape of the head;



HOW TO USE THE INNER SUN VISOR?

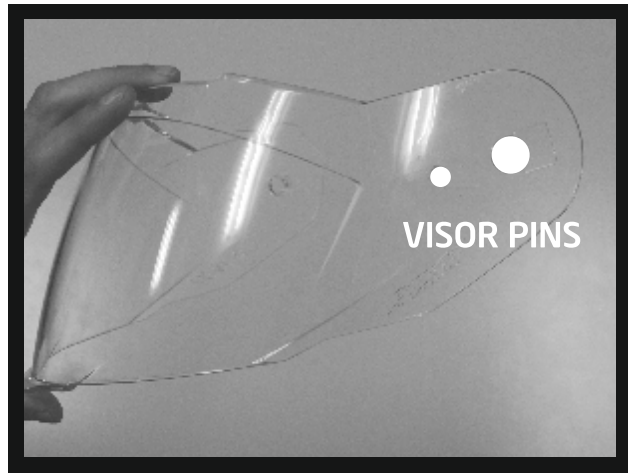


1



2

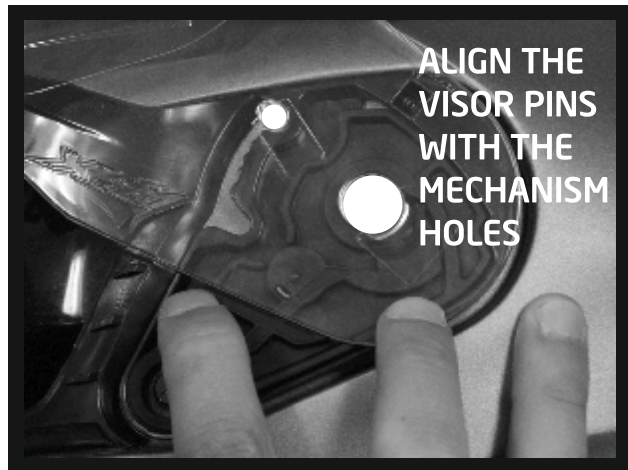
HOW TO PLACE THE VISOR?



1



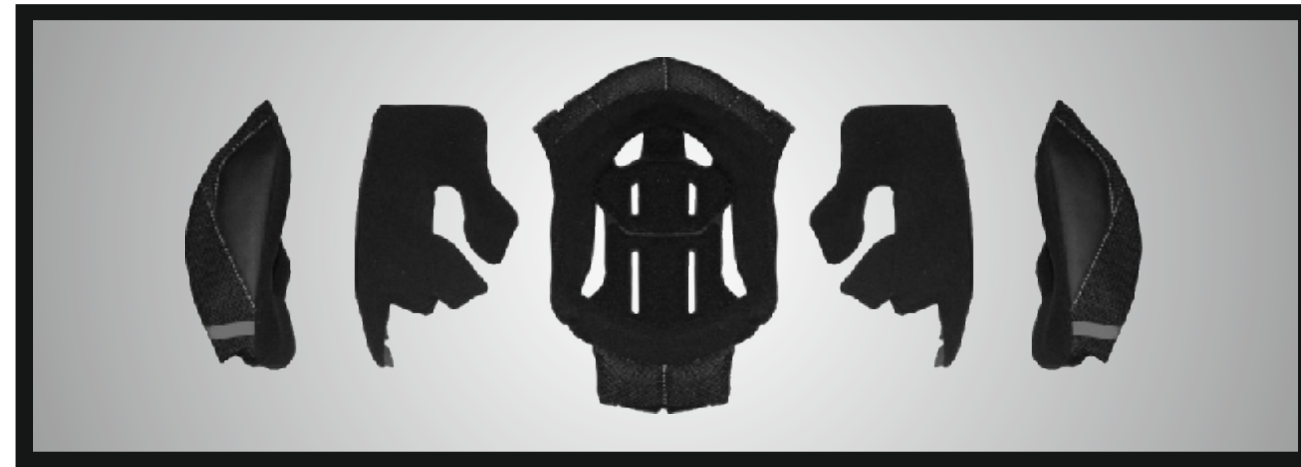
2



3



4

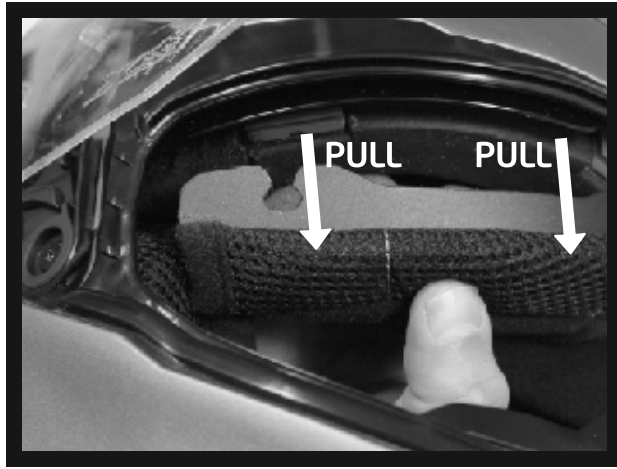


The lining of the helmet has the following characteristics:

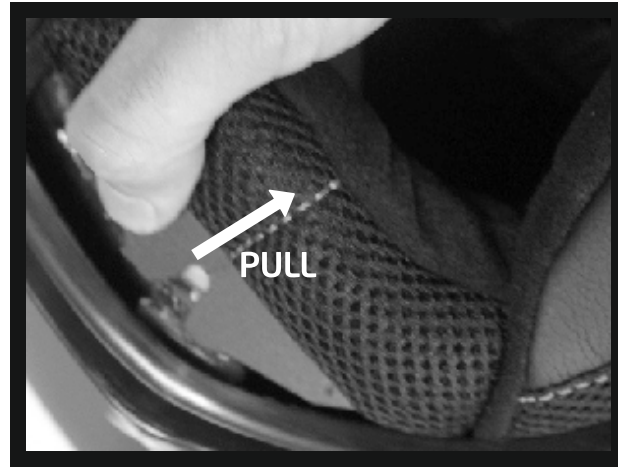
- Removable,
- Anti-allergy
- Anti-sweat

This lining can be removed and washable, as shown in the picture. If for some reason this lining is damaged it can be easily replaced.

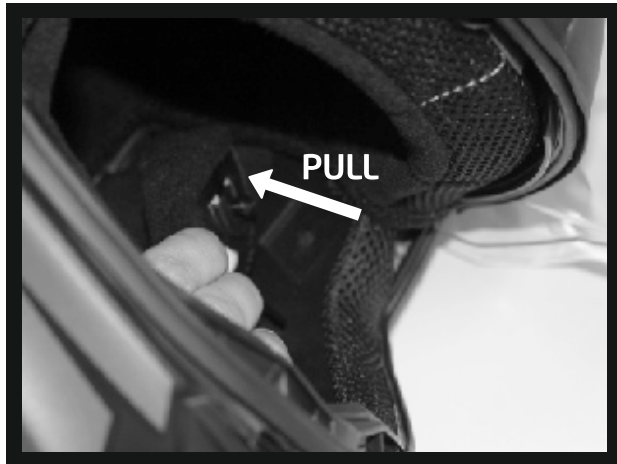
HOW TO REMOVE THE INNER LINING?



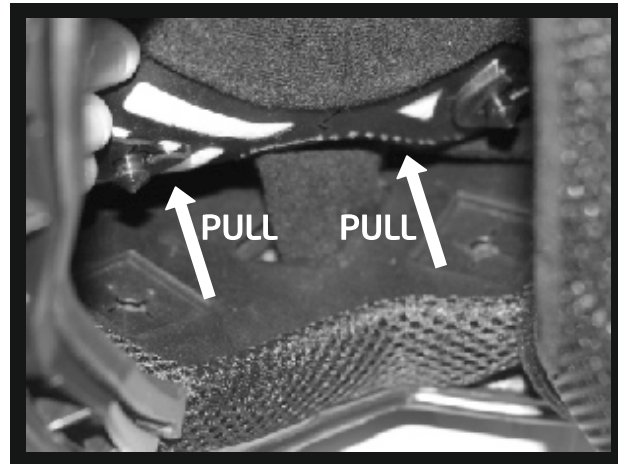
1



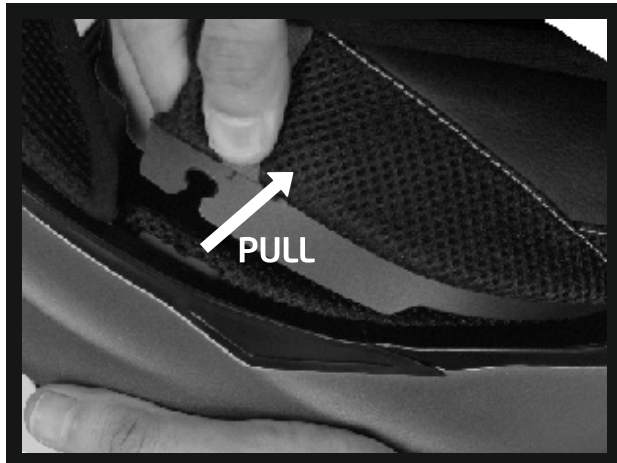
2



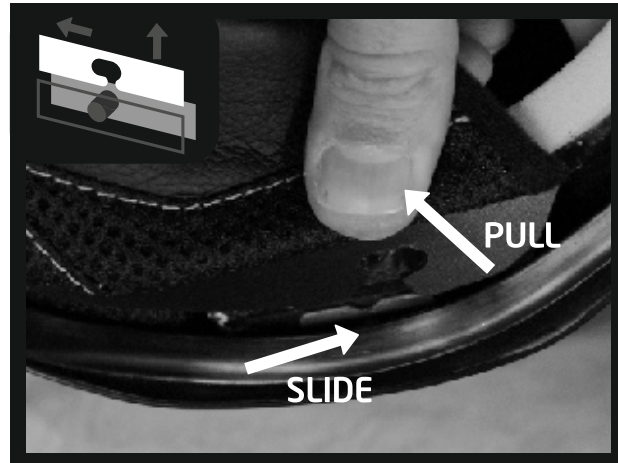
3



4



5

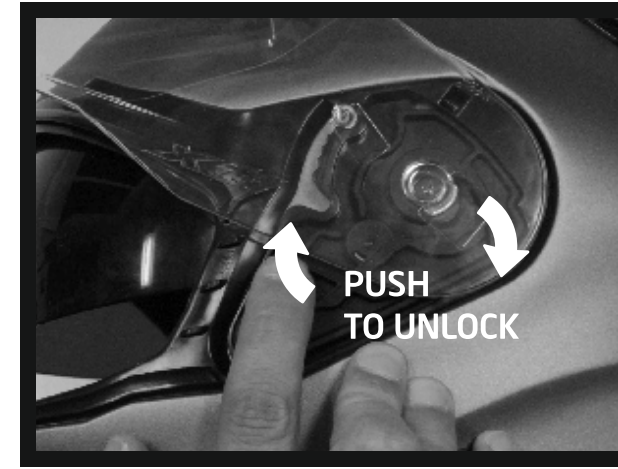


6

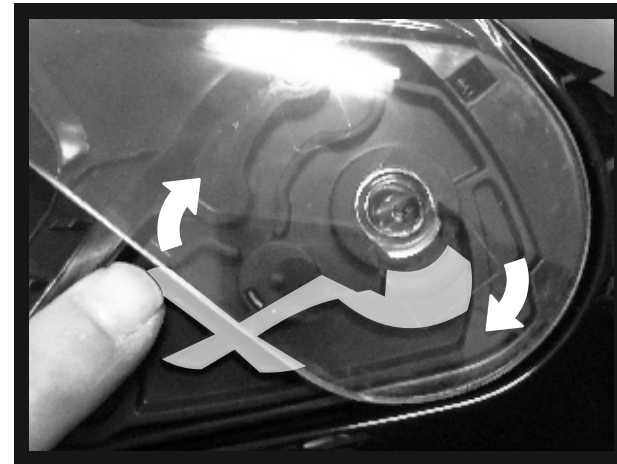
HOW TO REMOVE THE VISOR?



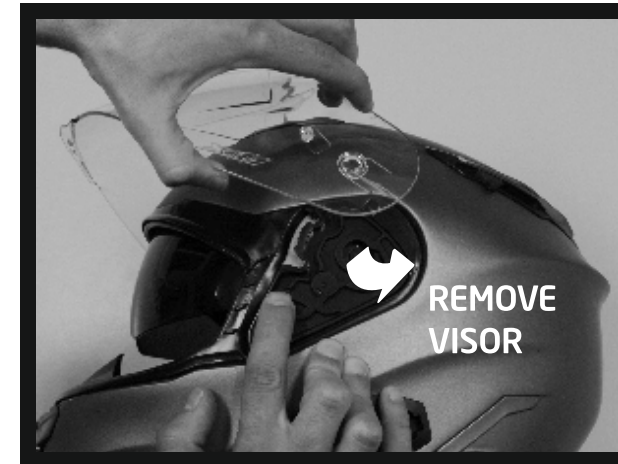
1



2



3

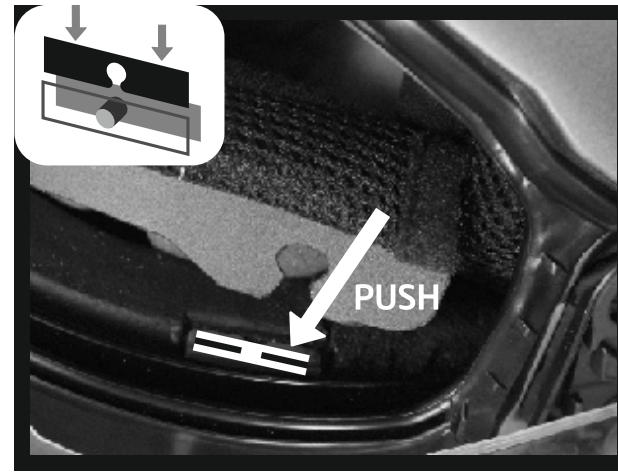


4

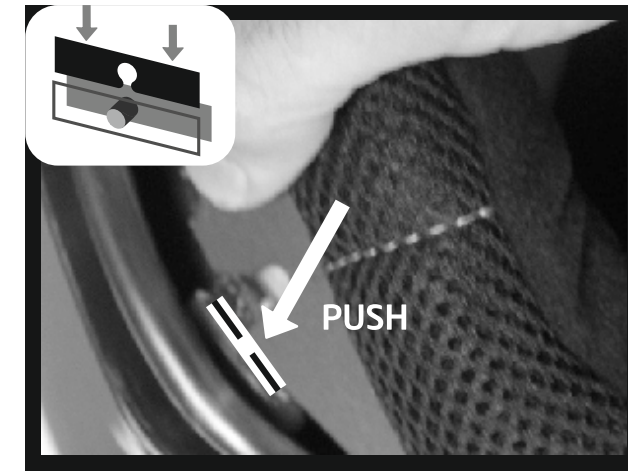
HOW TO CLEAN THE VISOR?

To clear the Visor without affecting its characteristics should be used only soapy water (preferably distilled) and a soft cloth. If the helmet is deeply dirty (ex. insect remains) can add a little liquid from the dish to water. Remove the Visor from the helmet before carrying a deeper cleaning. Never use objects to clean the helmet that may damage/scratch the visor. Always store the helmet in a dry place and protected from light, preferably in the bag provided by NEXX HELMETS.

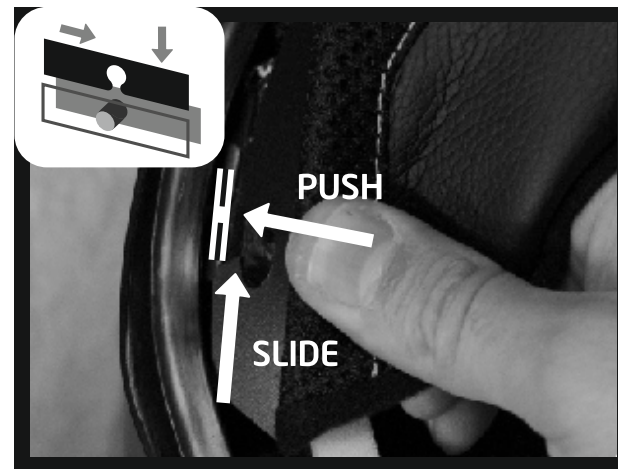
HOW TO PLACE THE INNER LINING?



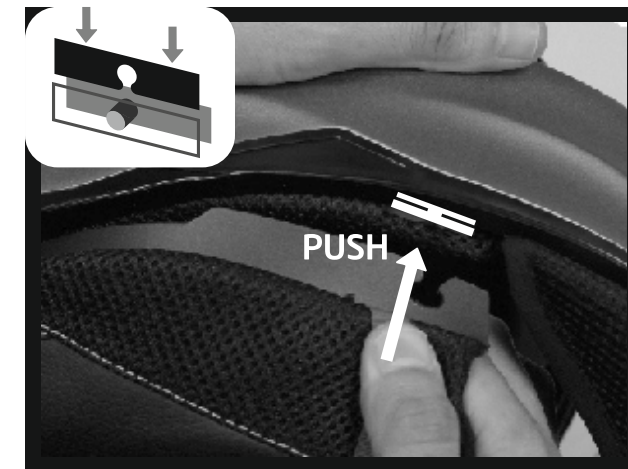
1



2



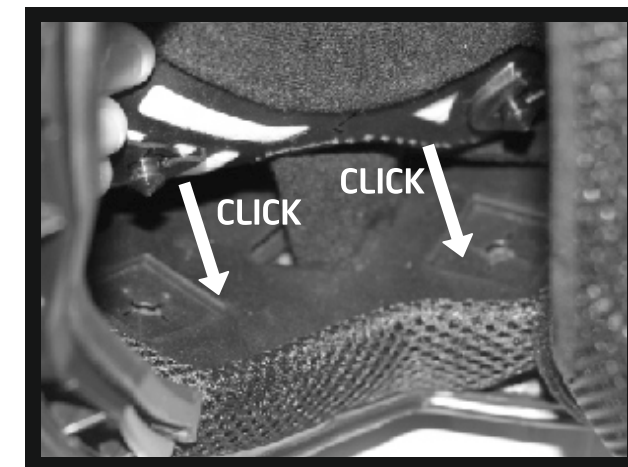
3



4



5



6



The X-SWIFT Quick Release visor mechanism makes changing visors extremely quick and simple (change in less than 8 seconds) without the need of any tool;



BLOCK'N SEAL

ADVANCED VISOR CLOSING SYSTEM

Block'N'Seal system with its automatically closure Spring button ensures smooth and waterproof seal every time you close the helmet Visor;

