



By National Cycle

INSTALLATION AND OWNER'S MANUAL

P9BR006

for HONDA® GL 1500 F6C

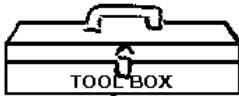
NOTE: Right and Left side of Motorcycle is determined while sitting on the bike.

PARTS LIST for Kit P9BR009

Index	Part No.	Description	Qty.
1	37-371158-000	Side Plate Assembly, Left	1
2	37-371159-000	Side Plate Assembly, Right	1
3	37-371164-000	Intermediate Bracket, Left	1
4	37-371165-000	Intermediate Bracket, Right	1

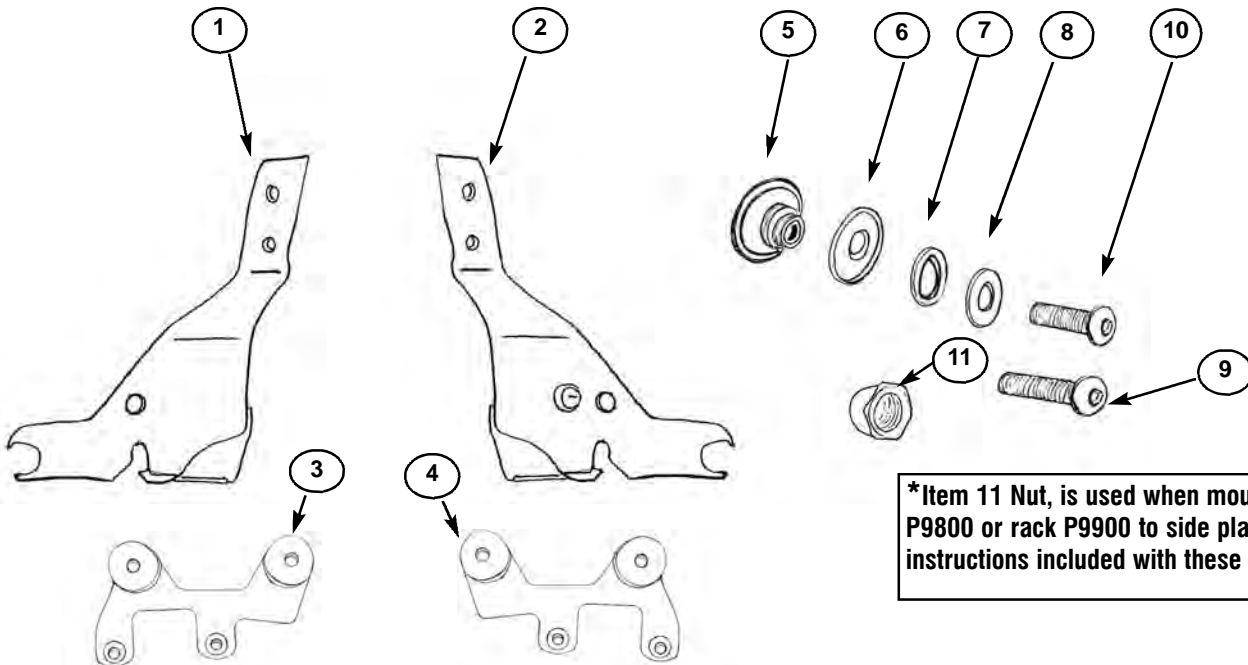
BAG 382

Index	Part No.	Description	Qty.
5	34-342716-000	Guide Washer Inside, 10.2mm ID	4
6	34-342725-000	Guide Washer Outside	4
7	80-871015-000	Spring, Curved	4
8	49-490205-000	Washer, Flat	4
9	51-517125-000	Screw, Button Head M10-1.50 x 25	4
10	51-516421-000	Screw, Button Head M8-1.25 x20	4
11	42-483020-000	Nut, Acorn*	2



Wrench, 12mm
Wrench, 14mm
Wrench, 24mm

Hex Key, 5mm
Hex Key, 6mm
Torque Wrench



*Item 11 Nut, is used when mounting backrest P9800 or rack P9900 to side plate. Mounting instructions included with these items.

PREPARATION

*Apply a coat of high quality polish or wax to the chrome side plates before assembly.



*This will keep latches gliding smoothly onto guide washers.

INSTALLATION OF THE PALADIN INTERMEDIATE BRACKET

To install the Paladin Intermediate Bracket, it requires the use of a motorcycle lift to hold the motorcycle by the front tire and a center stand or floor jack placed under the center of the motorcycle to lift the rear wheel to remove the rear shocks.

NOTE: To prevent damage to the rear fender and simplify alignment, completely disassemble and install the Paladin Intermediate Bracket on one side prior to proceeding to the other.

RIGHT SIDE:

1. Mount the Valkyrie on the motorcycle stand locking the front wheel securely. **Figure 1.**
2. Use a center stand or floor jack to raise the rear wheel off of the stand to unload the rear springs.
3. Remove the riders seat (passenger seat does not need to be removed).
4. Remove both left & right plastic frame covers (no tools necessary).
5. Loosen and remove factory installed backrest (if applicable) from the motorcycle.
6. Loosen/remove rear 12mm bolt on the right side fender strut (12mm wrench).
7. Loosen/remove middle 14mm bolt. (14mm wrench).
8. Loosen/remove top 12mm shock bolt and washer. (12mm wrench). **Figure 2.**

9. Loosen/remove bottom 14mm shock bolt at the swingarm. (14mm wrench).
10. Remove the shock from the motorcycle.
11. Loosen/remove 24mm shock mount, while holding the strut to prevent damage to the fender and chrome strut. (24mm wrench). **Figure 3.**



Figure 1.

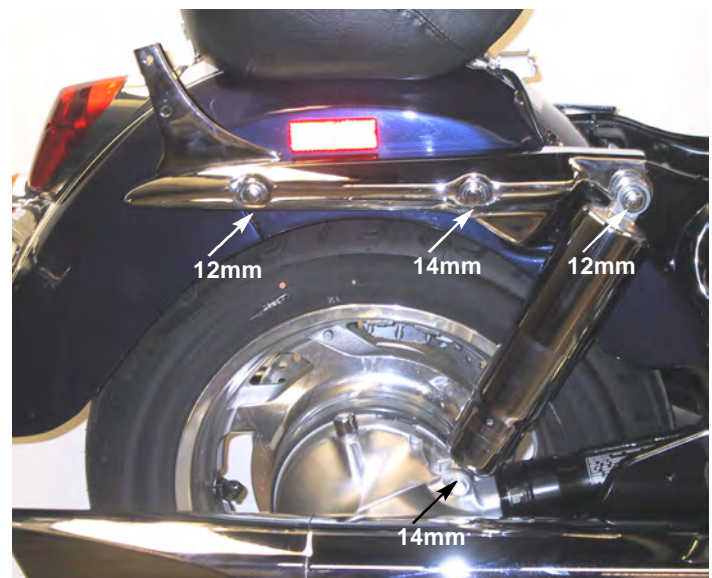


Figure 2.



Figure 3.

12. Once the chrome strut has been removed from the motorcycle, remove the two factory 12mm bolts from the strut. The Paladin Intermediate Bracket will use these same mounting locations (12mm wrench). **Figure 4.**

You are now ready to begin installing the Right Side Paladin Intermediate Bracket. When properly installed, the Guide Washers welded to the Intermediate Bracket will face outward.

NOTE: Apply Lock-Tite to all bolts prior to reinstallation.

13. Use the two M8 Button Head Cap Screws supplied with the kit to mount the right side Intermediate Bracket to the fender strut. (5mm Hex Key) **Figure 5.** Apply Lock-Tite and tighten to 36 ft. lbs. (50Nm) (Torque Wrench)

14. Begin reinstallation of the fender strut by first aligning and hand tightening the 24mm shock mount and rear 12mm bolt. Be careful to only hand tighten these two prior to installing the 14mm strut bolt. (12, 14 and 24mm Wrench)

15. Once all three bolts are hand tightened, torque the 12mm bolt and 14mm bolt to secure the fender and strut.

16. Tighten the 24mm strut mount to 36 ft. lbs. (50Nm) (Torque Wrench)

17 Reinstall the shock and apply Lock-Tite to the 12mm shock bolt and the 12mm shock bolt at the swingarm.

NOTE: Apply Lock-Tite to all bolts prior to reinstallation.

18. Once the Right side is completed, begin removing the Left side.

INSTALLING THE GUIDE WASHERS TO THE INTERMEDIATE BRACKET

1. Install the guide washer set per **figure 6.** Use the M10 Button Head Screws (6mm hex key.) Tighten screws to 29 ft-lbs. (Torque Wrench)

2. Repeat installation on other side.

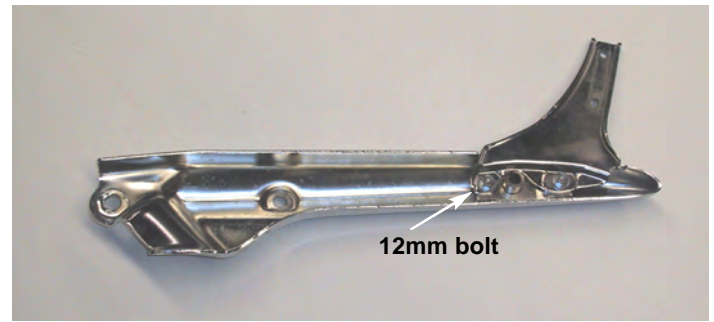


Figure 4.

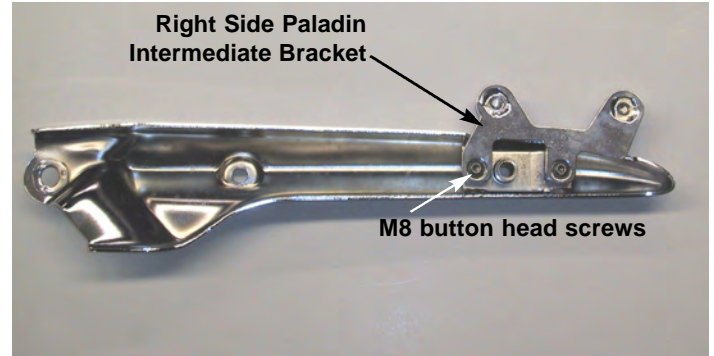


Figure 5.

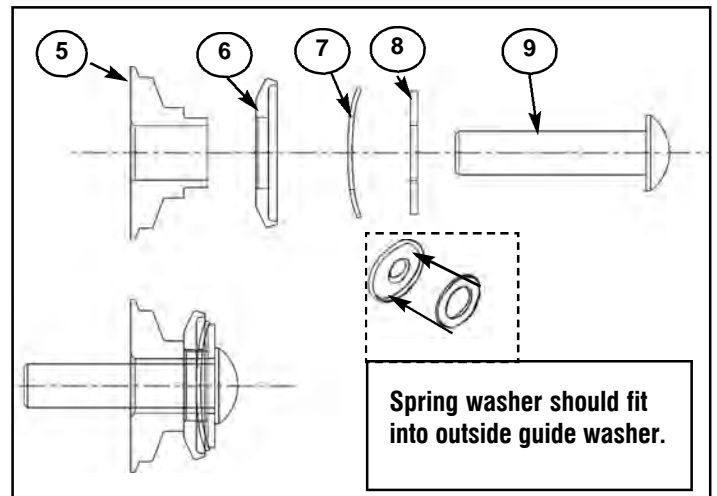
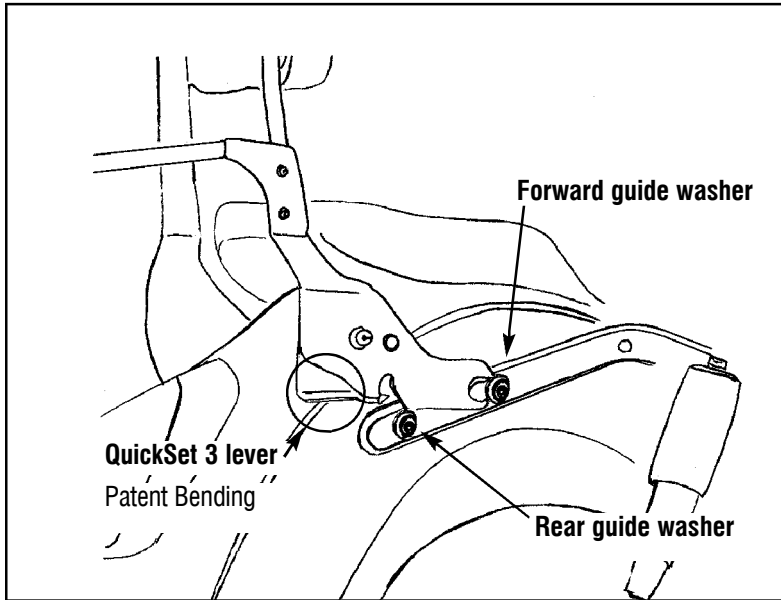


Figure 6.

MAINTENANCE

The high quality chrome finish of your National Cycle Paladin rack assembly can be maintained with any quality chrome cleaner and or polish.



Using the QuickSet 3® feature to remove your Paladin System.

Check that QuickSet 3 is unlocked. Stand at the rear of the motorcycle and grab ahold of the system at the side plates. Lift up on the QuickSet 3 lever while rotating the system up and pull back and out of the forward guide washer.

For re-installation, first make sure the QuickSet 3 feature is unlocked. Holding the system as you do in removal, guide the side plate into the forward guide washer. Make sure you fully seat the notch of the side plate into the washer. Lift the Quickset 3 lever and guide the rear notch in the side plate back onto the rear guide washer.

When mounting the luggage rack or backrest assembly, listen for the audible "click" indicating that the latches are in place and side plate is completely seated onto guide washers.

⚠ WARNING

Maximum load for the Luggage Rack is 5 Kg (11 lbs).

When mounting the Backrest assembly, listen for the audible "click" indicating that the latches are in place. Always lock the QuickSet 3® Side Mount Plate before using your motorcycle. This insures the utmost in safety.

Never ride your motorcycle with loose accessory mounting hardware. Check the hardware for tightness regularly.

Today's motorcycles are built with enough frame rigidity to withstand the moderate loads imposed on them by the foreseeable addition of an accessory. If the accessory(ies) adversely affects your motorcycle's stability, immediately remove the accessory(ies). Do not ride a motorcycle that exhibits unsafe handling traits.

Have experienced service personnel correct any problem before riding with the accessory(ies) installed. For further questions concerning handling problems associated with an accessory(ies), contact your dealer, motorcycle manufacturer, or accessory manufacturer.