



**INSTALLATION INSTRUCTION**  
**Part No. N7048 For Indian® Scout**

Front of Front Fender Tip                      Page 1-2  
 Rear of Front Fender Tip                      Page 3  
 Template, Separate Document 10-110676-000

**Attention**



Special notes and cautionary measures which can prevent damage to the accessory or motorcycle.

**Note:**



Tips for facilitation of operation, control and adjustment, as well as maintenance work.

**PARTS LIST FOR N7048**

Part	Description	Qty.	
70-710099F-000	Front of Front	1	With Applied, Foam Tape
70-710099R-000	Rear of Front	1	

**Parts from Bag #500 to be used in Front of font installation**

42-450011-001	Nut, Hex	1
49-490531-000	Washer	1
77-770200-000	Alcohol Wipe	1

Wrapped with instruction sheet



Additional parts are used in the installation of the Rear of Front Tip



**TOOLS REQUIRED**

- Template for Drilling (supplied with instruction sheet)
- Scissors
- Flexible Measuring Tape
- Pencil for Marking
- Tape
- Thin piece wood that fits between Fender & Tire
- Power Drill with 3/16" Drill Bit
- 9mm Open End Wrench
- Center Punch
- Phillips Screw Driver
- 5/16" Open End Wrench

**PREPARATION**

The front of front fender tip combines a hidden screw, with 3M tape installation. Please follow the instructions below for proper installation. Allow time for the 3M® brand quality tape to cure for 24 hours at 70-90° F (21-32° C) before washing, waxing or riding the motorcycle.

**Clean the Front Fender**

1. Thoroughly wash fender where Fender Tip will be installed. **Figure 1**

Area where Tip will mount should be free of all dirt, wax, soap or other residue. The 3M® brand tape will adhere extremely well when applied to a clean area.

2. Wipe area with the alcohol wipe. **Figure 2**

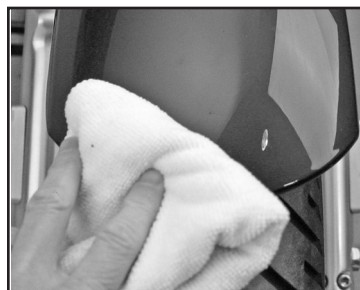


Figure 1



Figure 2

Note: Stock photos used in illustrating this installation.

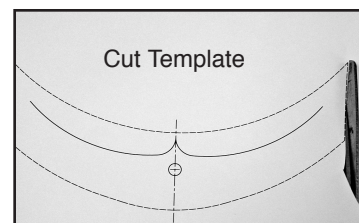


Figure 3

**Cut Template**

3. Cut the Fender Tip Template on the line. (Document 10-110676-000 and Scissors) **Figure 3.**

**Locate Center of Fender**

4. Tape template on fender. Align center of Template with center of fender. Front edge of template will be at the leading edge of the fender. (Tape) **Figure 4**

5. Verify the center mark of Template with a measuring tape across fender. Do a visual check, make adjustments if necessary. (Measuring Tape) **Figure 4**

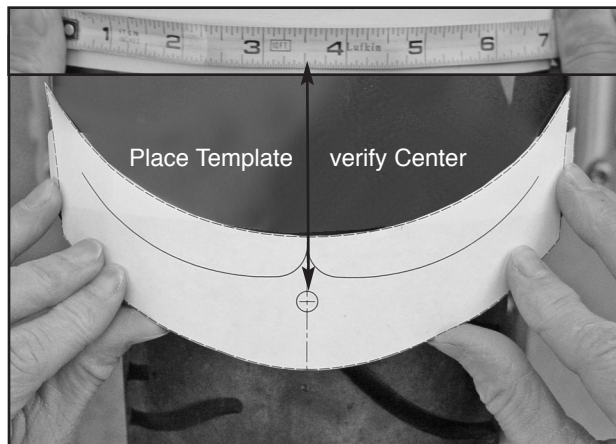


Figure 4

## INSTALLATION

### Drill Center Hole

1. To avoid the drill slipping on the fender, use a Center Punch to make an impression at the center of the drill hole marked on the Template. **(Center Punch)**



Area between front fender and tire is tight. **DO NOT** drill into tire. Place a thin piece of wood between the fender and the tire to avoid tire damage.

2. Start the hole normal to surface, angle drill downward to elongate hole slightly. **(Power Drill with 3/16" Drill Bit.)**

**Figure 5**

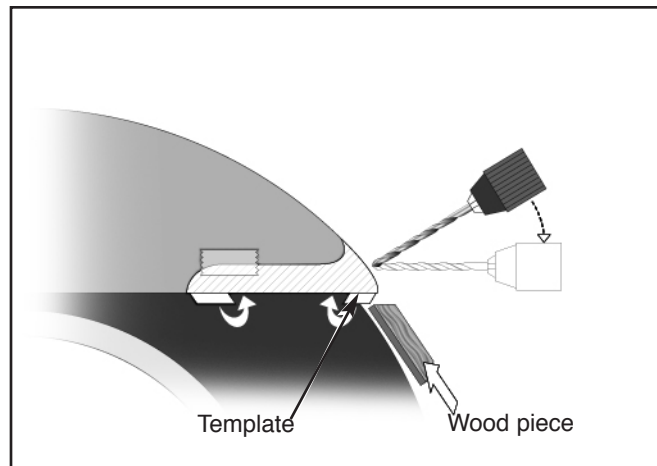


Figure 5

### Install Fender Tip

3. Remove liner from tape. Carefully slide tip on fender inserting mounting stud through drill hole. **Figure 6**

4. Squeeze sides of tip against fender. **Figure 7**

5. Place a Washer onto the stud and secure with Hex Nut. **Figure 8**

6. Carefully tighten Nut with wrench. The nut should be tight enough to avoid rattles. **(9mm Open End Wrench) Figure 8**

7. Check the tightness of the nuts regularly.

Note: Stock photos used in illustrating this installation.

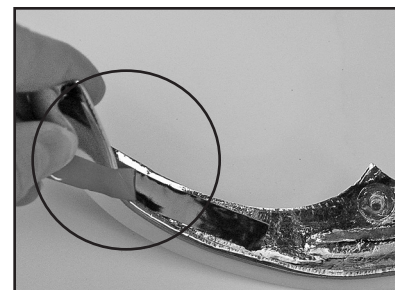


Figure 6

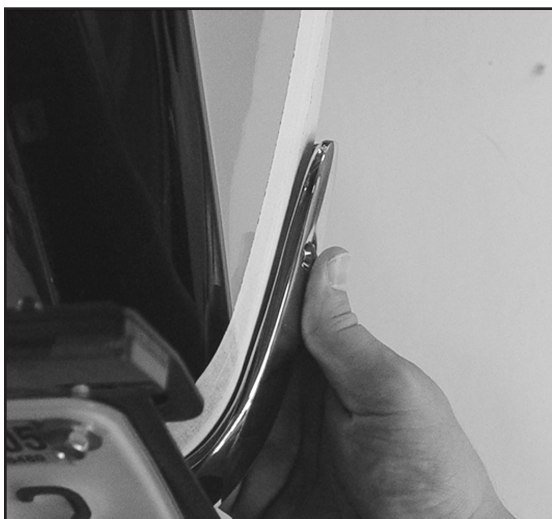


Figure 7



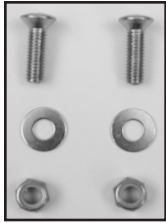
Figure 8

## PARTS LIST FOR N7048 REAR OF FRONT FENDER

<u>Part</u>	<u>Description</u>	<u>Qty.</u>
70-710099R-000	Rear of Front Fender	1

### Parts from Bag #500 used in Rear of Front installation

49-490531-000	Washer	2
42-423050-000	Nut, Nylok	2
55-568216-000	Screw, M5	2



Note: Stock photos used in illustrating this installation.

## INSTALLATION INSTRUCTION

Part No. N7048 For Indian® Scout  
Rear of Front Fender Tip

Page 3



Figure 9

### PREPARATION

1. Position motorcycle securely on its center stand or a work stand.

#### Clean the Front Fender

2. Thoroughly clean fender where Fender Tip will be installed. **Figure 9**

### INSTALLATION

1. Carefully, position the Rear of Front Fender Tip on the fender, make sure the Tip is centered on the fender.

#### Figure 10



Figure 10

2. Mark the hole locations with the marking pen. **Figure 10**

3. Remove the Fender Tip.

4. To avoid the drill slipping on the fender, use a Center Punch to make an impression at the center of your mark.

#### (Center Punch) Figure 11



Due to close clearances between front fender and tire, place block of wood between the fender and the tire to avoid tire damage.

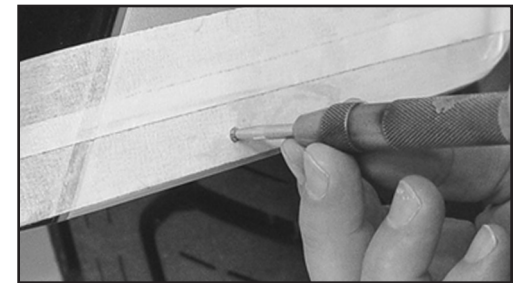


Figure 11

5. Drill holes through the fender at the marks. Drill hole normal to surface. **(Power Drill with 3/16" Drill Bit.)**

6. Position the Fender Tip, and squeeze fender toward tip. Insert the Screws from the outside. Install the Washers and Nuts to the inside. Tighten securely. **(Phillips Screw Driver and 5/16" Open End Wrench) Figure 12**

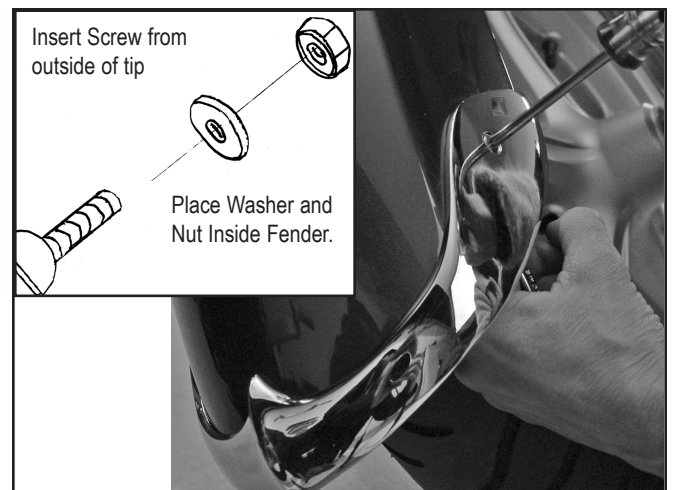
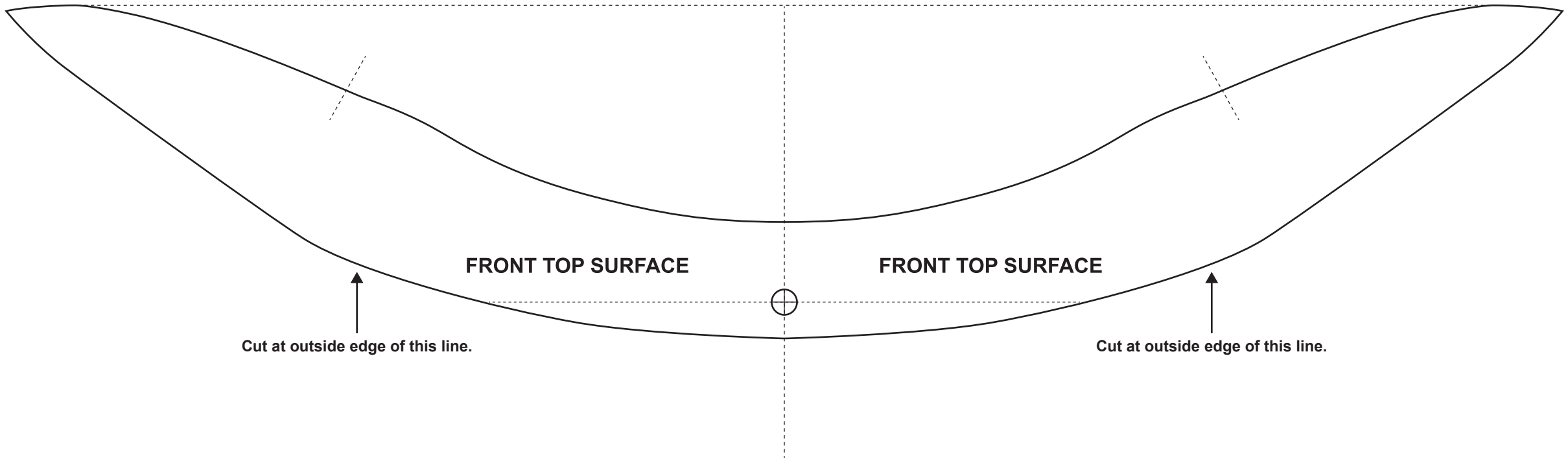


Figure 12

### MAINTENANCE

Clean and polish with a chrome cleaner/polish. Check tightness of the nuts regularly.

# N7048 INDIAN SCOUT FRONT FENDER TIP TEMPLATE



Cut at outside edge of this line.

FRONT TOP SURFACE

FRONT TOP SURFACE

Cut at outside edge of this line.



SIX-INCH VERIFICATION SCALE

Looking for dependable custom accessories & trim?  
Rely on National Cycle for quality and long-lasting products.